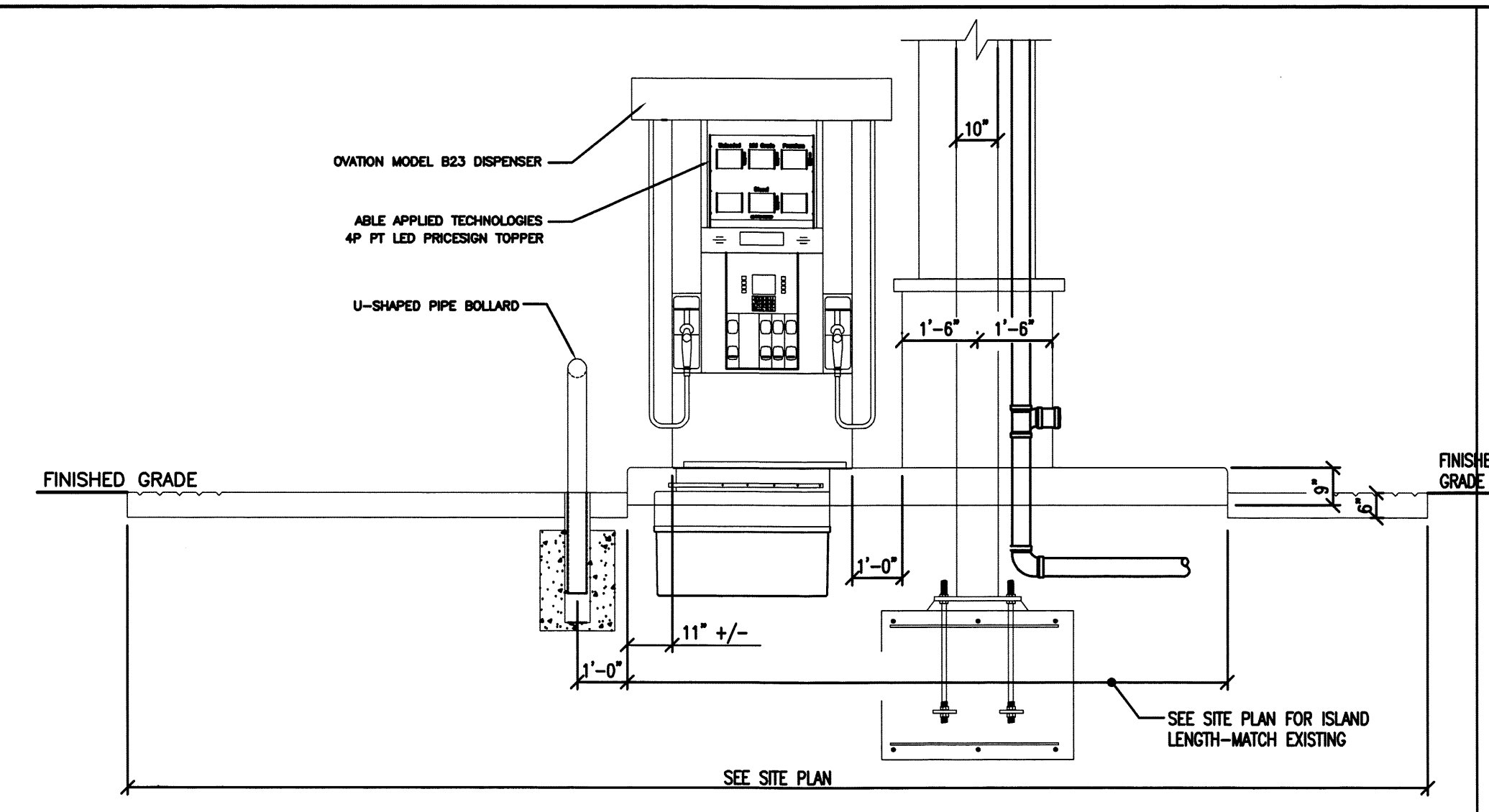
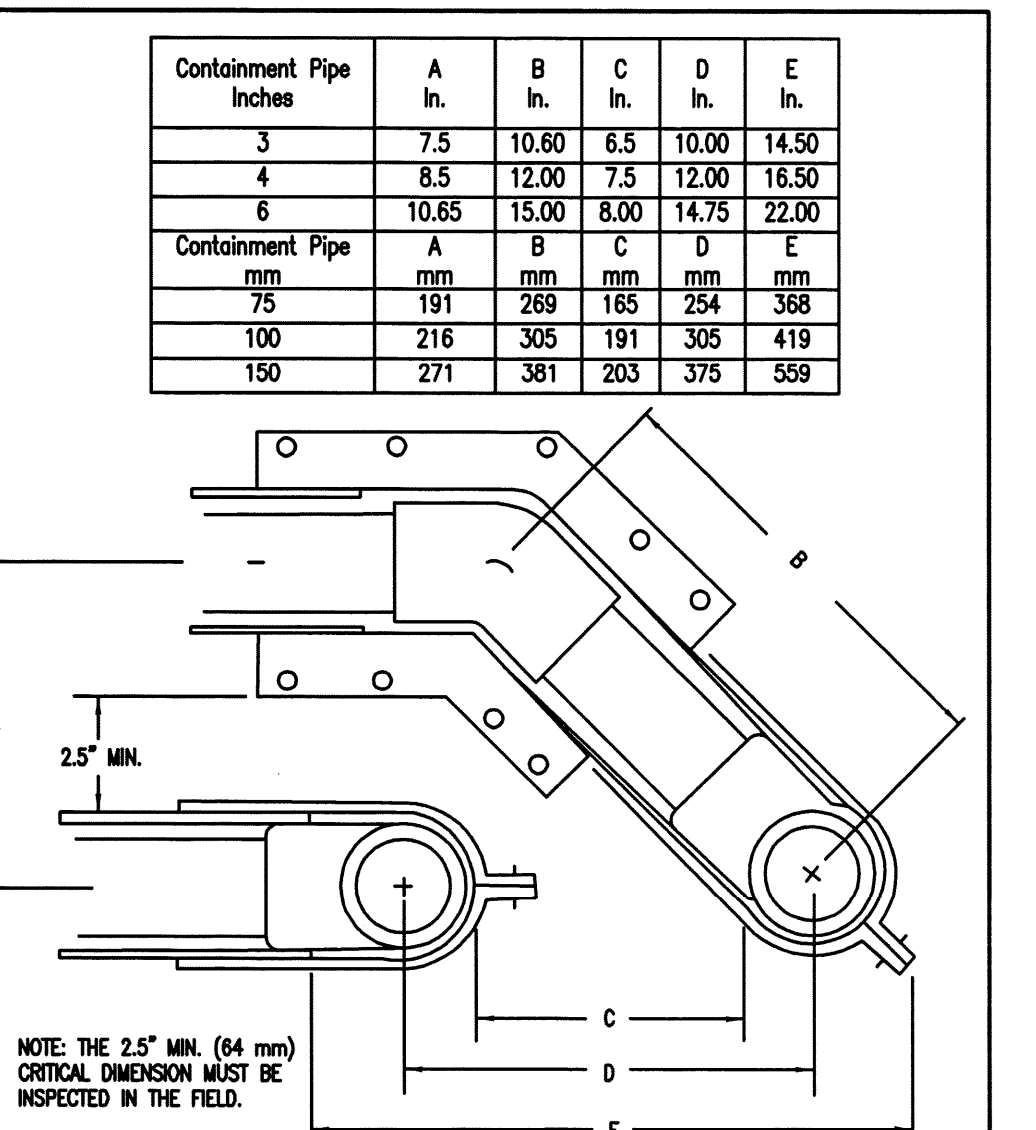


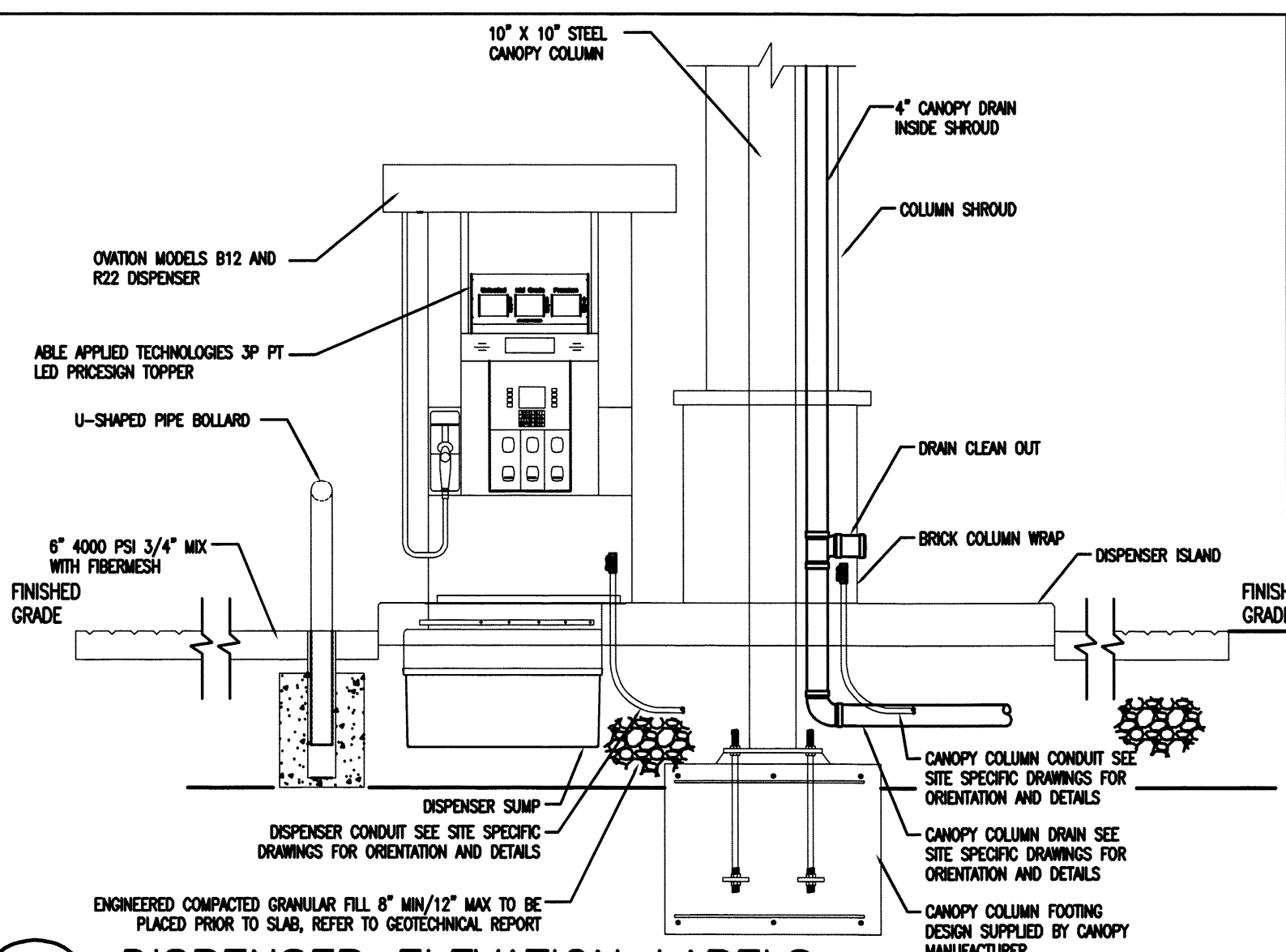
**01 TYPICAL REGULAR TANK SUMP DETAILS**  
 SCALE: 1/2" = 1'-0"  
 CFG14.4



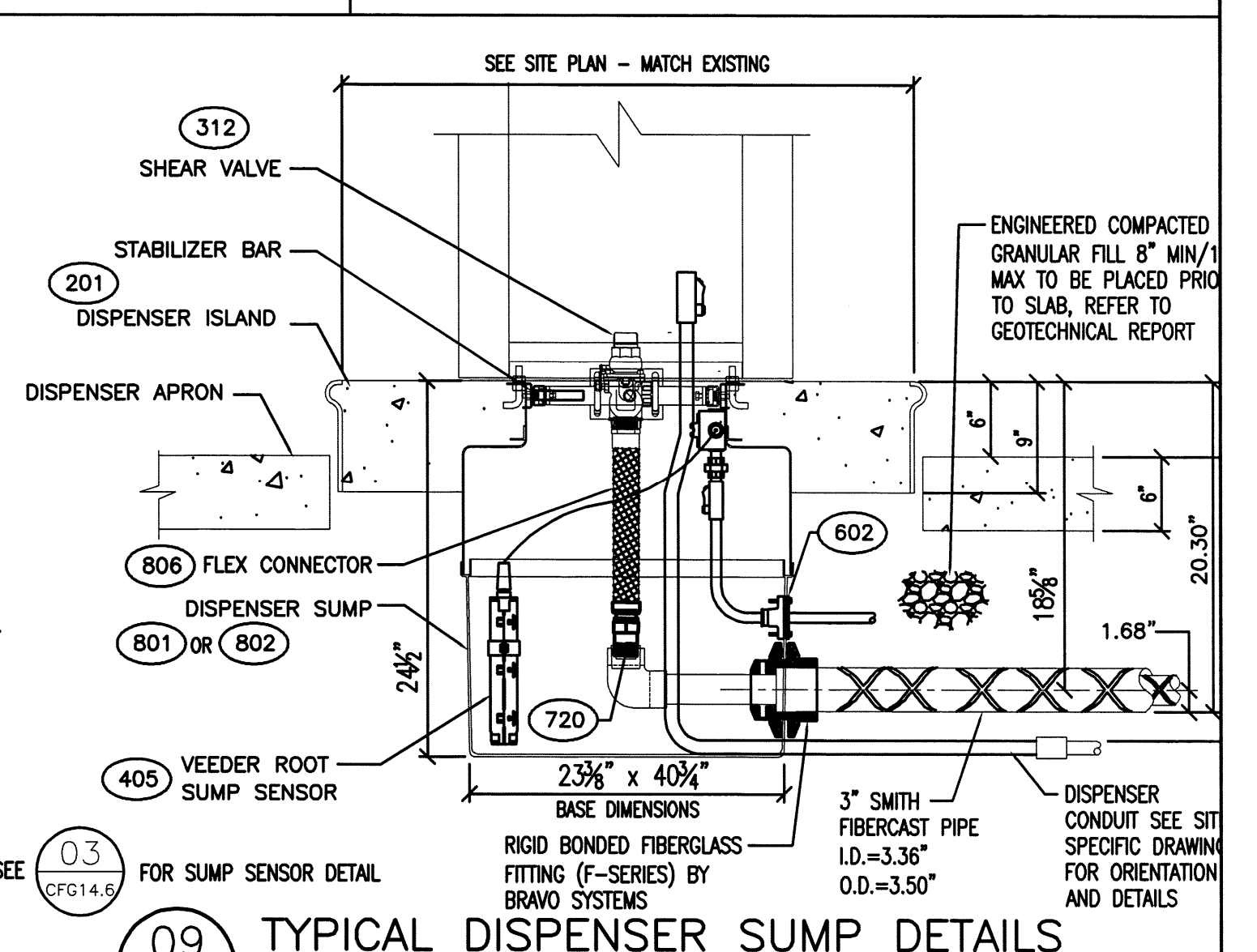
**04 DISPENSER ELEVATION DIMENSIONS**  
 SCALE: N.T.S.  
 CFG14.4



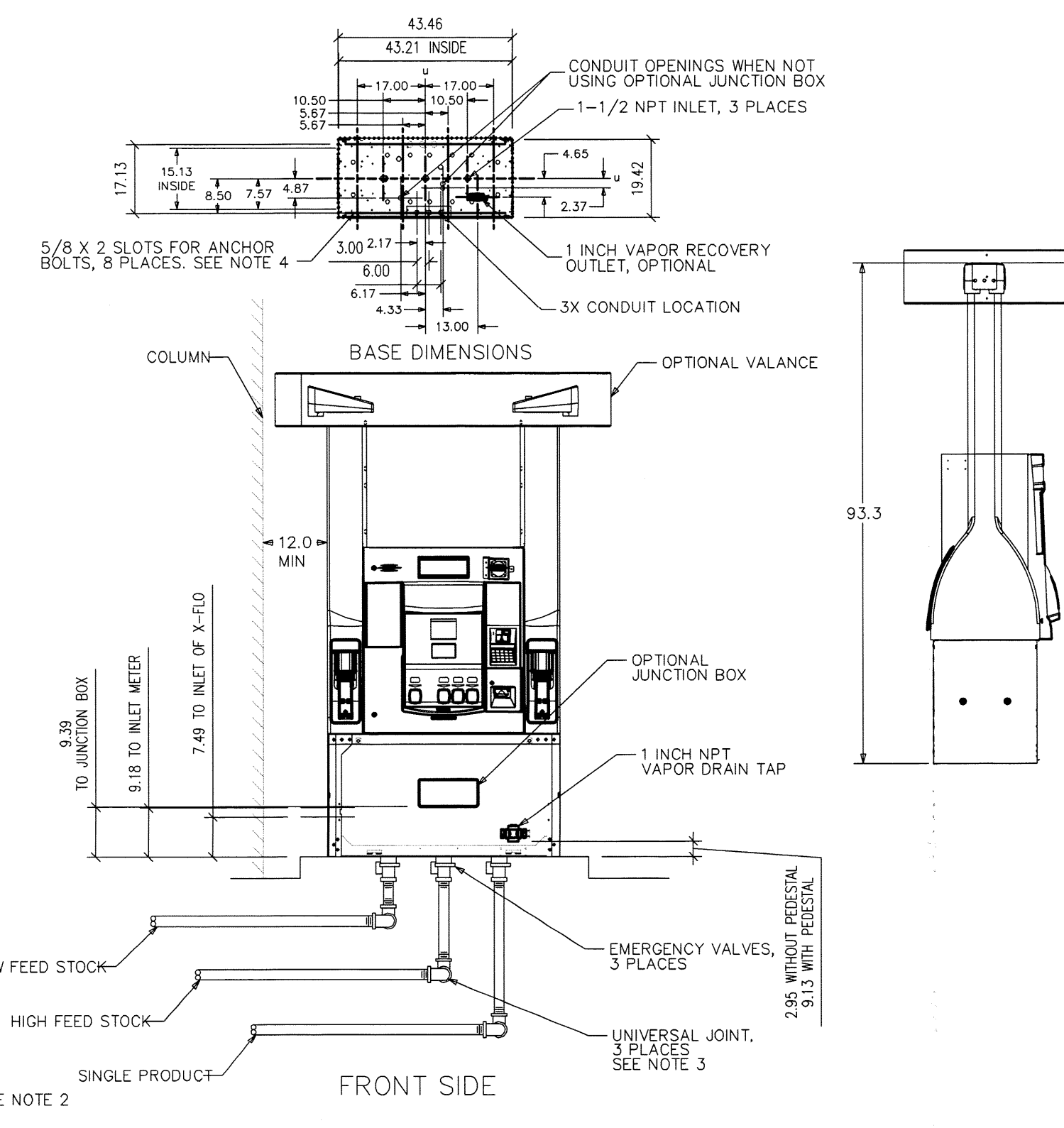
**03 PIPING CROSSOVER DETAIL**  
 NOT TO SCALE  
 CFG14.4



**02 DISPENSER ELEVATION LABELS**  
 SCALE: 1/2" = 1'-0"  
 CFG14.4



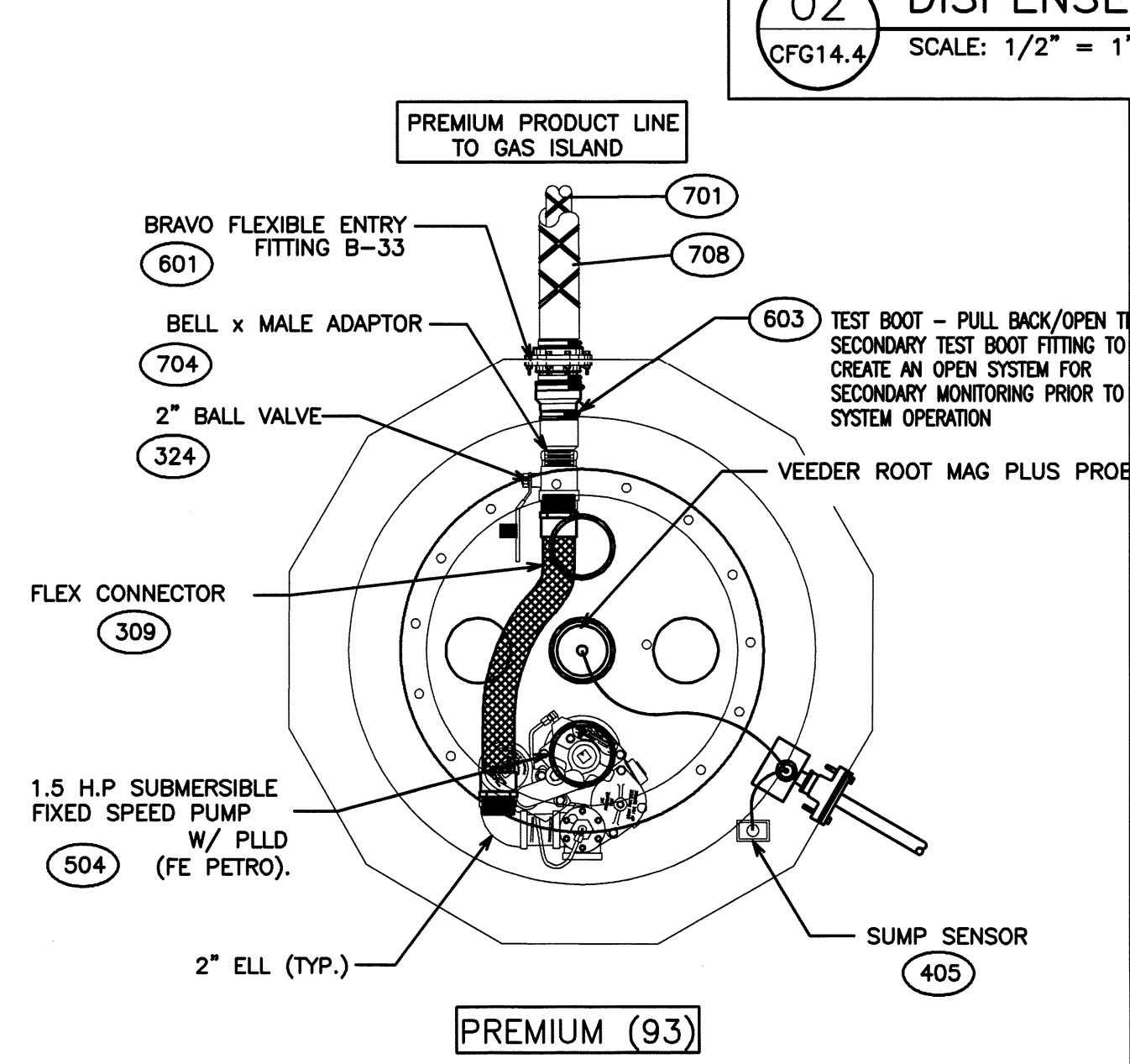
**09 TYPICAL DISPENSER SUMP DETAILS**  
 SCALE: 1/2" = 1'-0"  
 CFG14.4



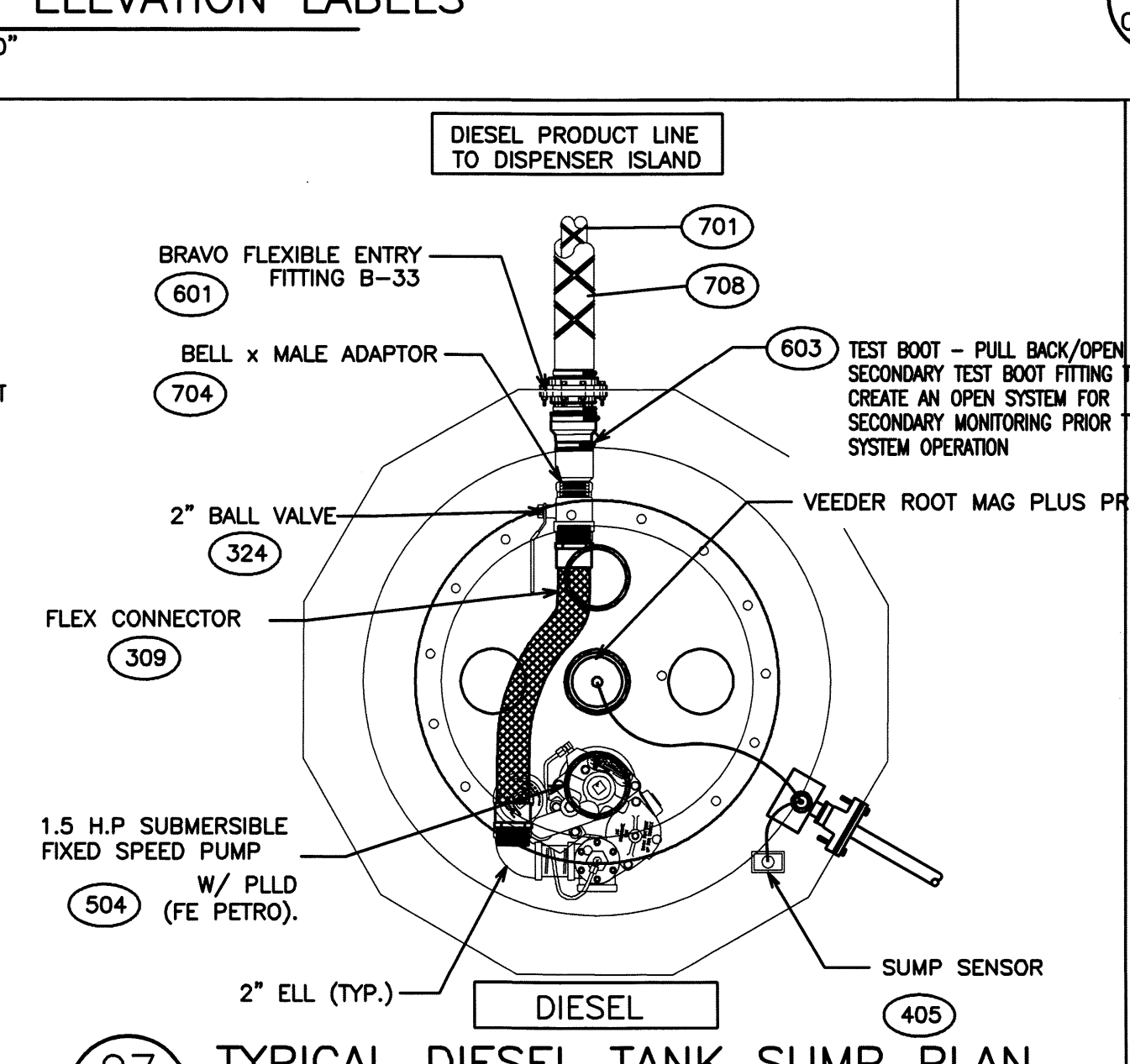
**08 DISPENSER FOOTING DETAIL**  
 NOT TO SCALE  
 CFG14.4

**NOTES:**  
 1. LOCATION OF FITTINGS AS SHOWN FOR PRODUCT PIPING, SIPHON BAR, AND STP MANIFOLD ARE ILLUSTRATIVE ONLY. SEE PIPING PLAN FOR ACTUAL SITE SPECIFIC PIPING LAYOUT.  
 2. TWO 2hp FE PETRO SUBMERSIBLE PUMPS WITH MANIFOLD LINE BETWEEN THE PUMPS. THE MASTER PUMP WILL BE INSTALLED WITH A PILD TRANSDUCER AND SWITCHCHECK VALVE. WHILE THE SLAVE PUMP WILL BE SUPPLIED WITH A NON-VENTED SWITCHCHECK VALVE IN ACCORDANCE WITH THE VEEDER-ROOT INSTALLATION. THE DISPENSER POWER CIRCUIT TO ANY OTHER EQUIPMENT.  
 3. USE UNIVERSAL JOINTS AT DISPENSER TO ALLOW FOR GROUND MOVEMENT.  
 4. FIRMLY MOUNT THE DISPENSER TO THE ISLAND USING THE ANCHOR BOLT LOCATIONS SHOWN. SEE ANCHORING DETAIL. USE OF ALL ANCHORING LOCATIONS IS RECOMMENDED.  
 5. EMERGENCY SHUTOFF VALVES AND BREAKAWAY DEVICES ARE EXAMPLES OF REQUIREMENTS STATED IN THE NFPA30A AUTOMOTIVE & MARINE SERVICE STATION CODE. THESE, AS WELL AS ANY OTHER SAFETY DEVICES REQUIRED BY NFPA30 & 30A, MUST BE INSTALLED AND MAINTAINED PER THE MANUFACTURER'S INSTRUCTIONS.  
 6. THE FEED STOCKS MUST BE PLUMBED AS SHOWN FOR THE DISPENSER TO WORK PROPERLY.  
 7. CONNECT OPTIONAL INTERCOM CIRCUIT TO A LISTED CLASS 2 POWERED INTERCOM ONLY WITH 18 GAUGE MINIMUM, AT LEAST 90 DEGREE C, 600 V GAS & OIL RESISTANT UL LISTED WIRE. WIRES BACK TO INTERCOM POWER MUST BE RUN IN SEPARATE DEDICATED LISTED METALLIC CONDUIT.

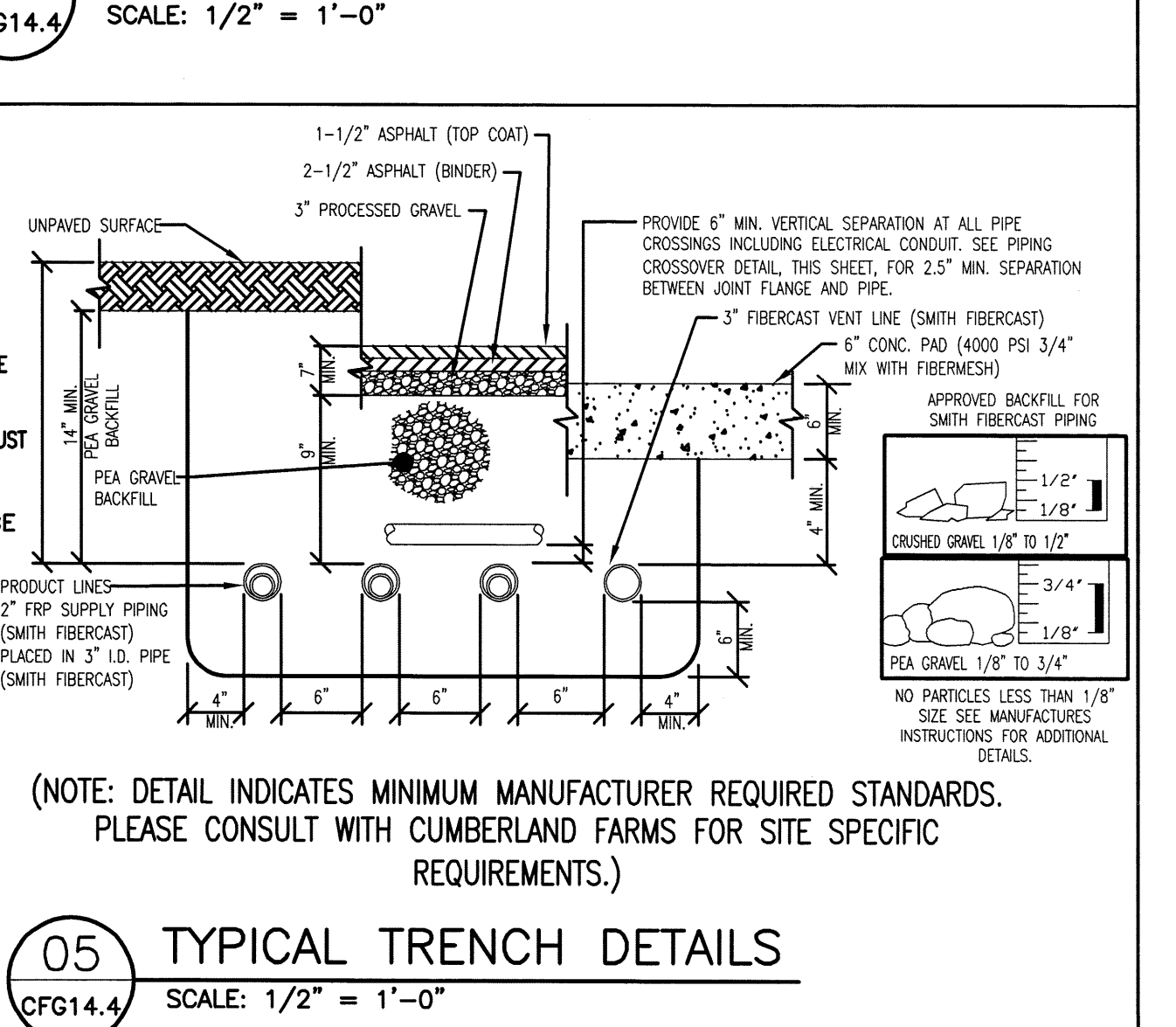
**WAYNE/DRESSER**  
**Ovation B/12/23**



**06 TYPICAL PREMIUM TANK SUMP PLAN**  
 SCALE: 1/2" = 1'-0"  
 CFG14.4



**07 TYPICAL DIESEL TANK SUMP PLAN**  
 SCALE: 1/2" = 1'-0"  
 CFG14.4



**05 TYPICAL TRENCH DETAILS**  
 SCALE: 1/2" = 1'-0"  
 CFG14.4

REVISIONS				21,521 SQUARE FEET
NO.	DATE	REV. BY.	DESCRIPTION	
				.494 ACRES
				V #1614
				Store #5613
				Gas Station #1848

512 WOODFORD STREET  
**PORTLAND, ME**  
**FUEL GUIDELINE DRAWING SHEET NO. 4**

DOUBLE WALL FIBERGLASS TANK INSTALLATION FOR:  
**TWO (2) 20,000 (12/8 SPLIT) GALLON TANKS**

SCALE: 1" = 10'  
 DATE: JAN. 21, 2014  
 FILE: 3403\_CFG14.4  
 DRAWN BY: HS

**Cumberland Farms**  
 CUMBERLAND FARMS, INC.  
 100 Crossing Boulevard  
 Frammingham, MA 01702

**SUMP & PIPING DETAILS**  
 CFG14.4

F:\Projects\CA01313\UST PLANS\3403\_CFG14.4.dwg CFG14.4 1/22/14 6:08pm hs

**MHF Design Consultants, Inc.**  
 44 Siles Road, Suite One  
 Salem, New Hampshire 03079  
 (603) 893-0720  
 ENGINEERS + PLANNERS + SURVEYORS  
 www.mhfdesign.com

