

MISCELLANEOUS CHARTS

VEHICLE CAPACITY

TYPE	FULL SERVE	SELF SERVE
FUELING	-	12
WAITING TO BE FUELED	-	6
TOTALS	-	18

TOTAL NUMBER OF DISPENSING UNITS: (6) GASOLINE AND DIESEL
 TOTAL NUMBER OF FUELING POSITIONS: (12) GASOLINE AND DIESEL

U/G STORAGE TANKS

TANK	CAPACITY	PRODUCT	TANK TYPE	INSTALL DATE
A SPLIT TANK	12,000 GAL	REG. GASOLINE	DWFG	PROPOSED
B SPLIT TANK	8,000 GAL	DIESEL	DWFG	PROPOSED
C SPLIT TANK	12,000 GAL	REG. GASOLINE	DWFG	PROPOSED
D SPLIT TANK	8,000 GAL	PREMIUM	DWFG	PROPOSED

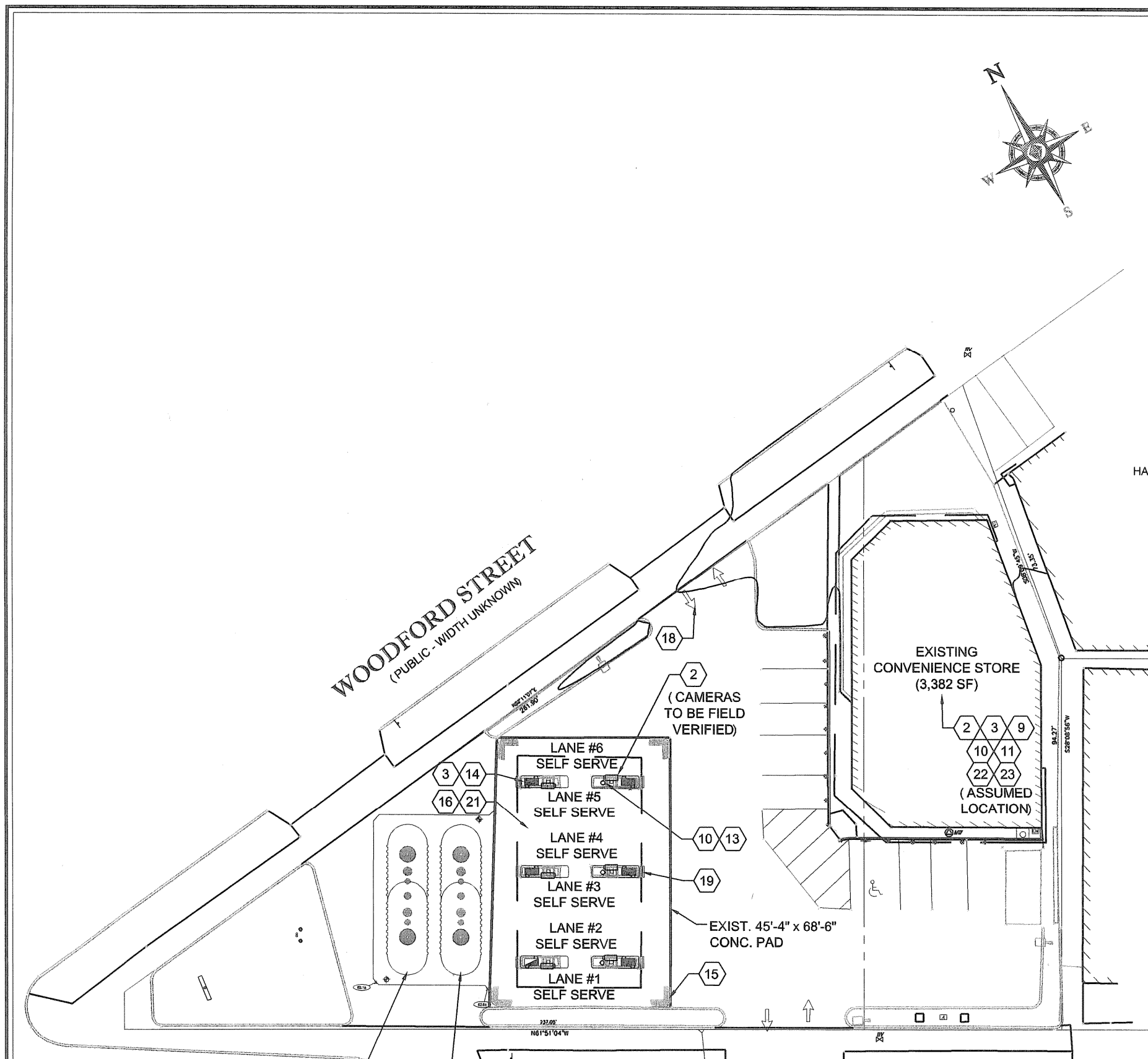
CCTV CAMERAS

LANE #	FULL/SERF SERVE	SELF SERVE	FULL SERVE
LANE #12	--	2	--
LANE #34	--	2	--
LANE #56	--	2	--

SITE SPECIFIC SYSTEM COMPONENT TABLE *

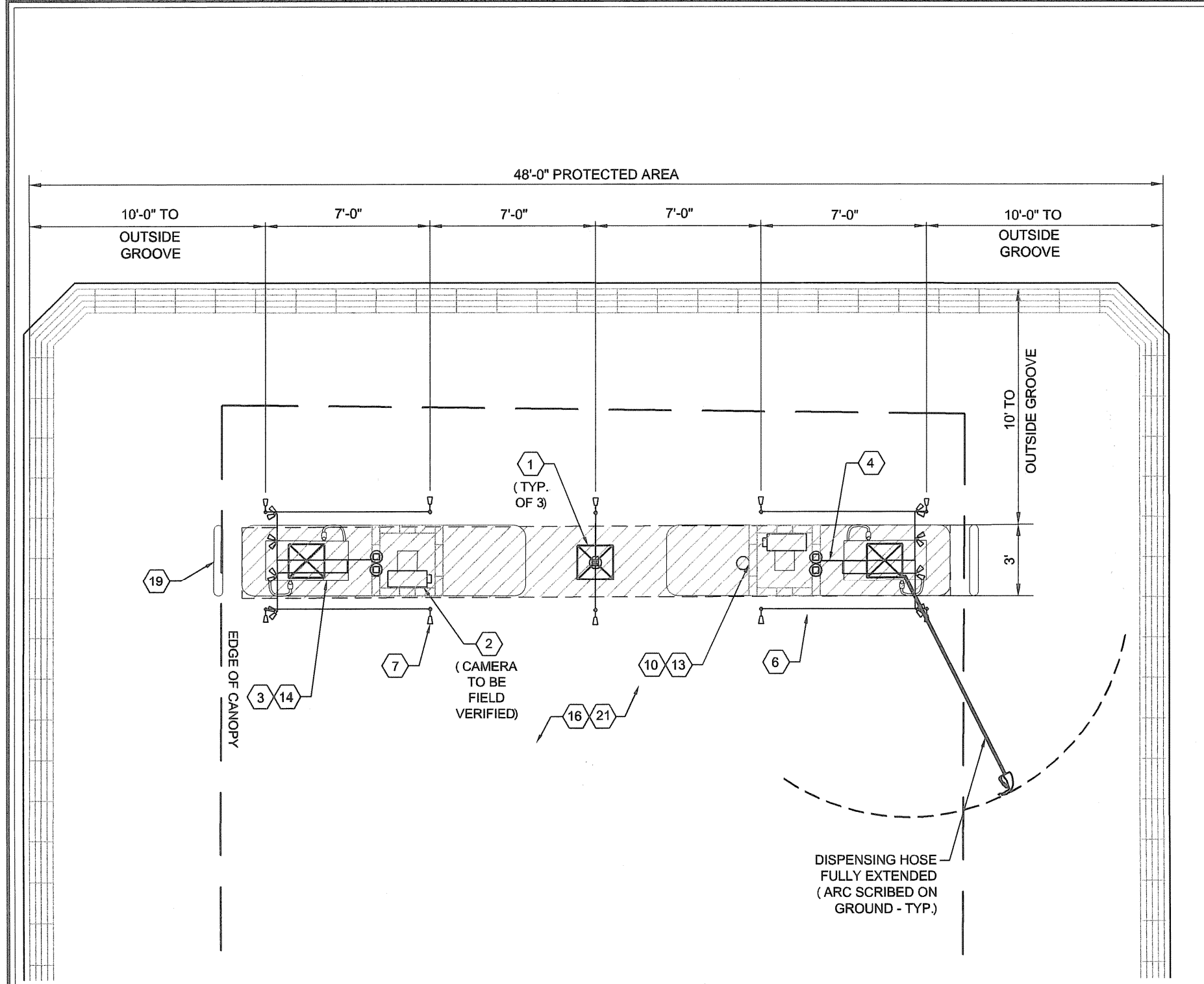
NUMBER OF SYSTEMS REQ'D	NUMBER OF NOZZLES REQ'D	NUMBER OF CYL REQ'D	CYLINDER SIZE & QTY.
(1) 28'-0" LONG SYSTEM	(36) PER SYSTEM	(5) PER SYSTEM	ATD-358C=1
(3) TOTAL SYSTEM	(108) TOTAL NOZZLES	(15) TOTAL CYLINDERS	ATD-358C=4
			ATD-358C=3
			ATD-758C=12

* INCLUDES MAIN AND END OF ISLAND PROTECTION.

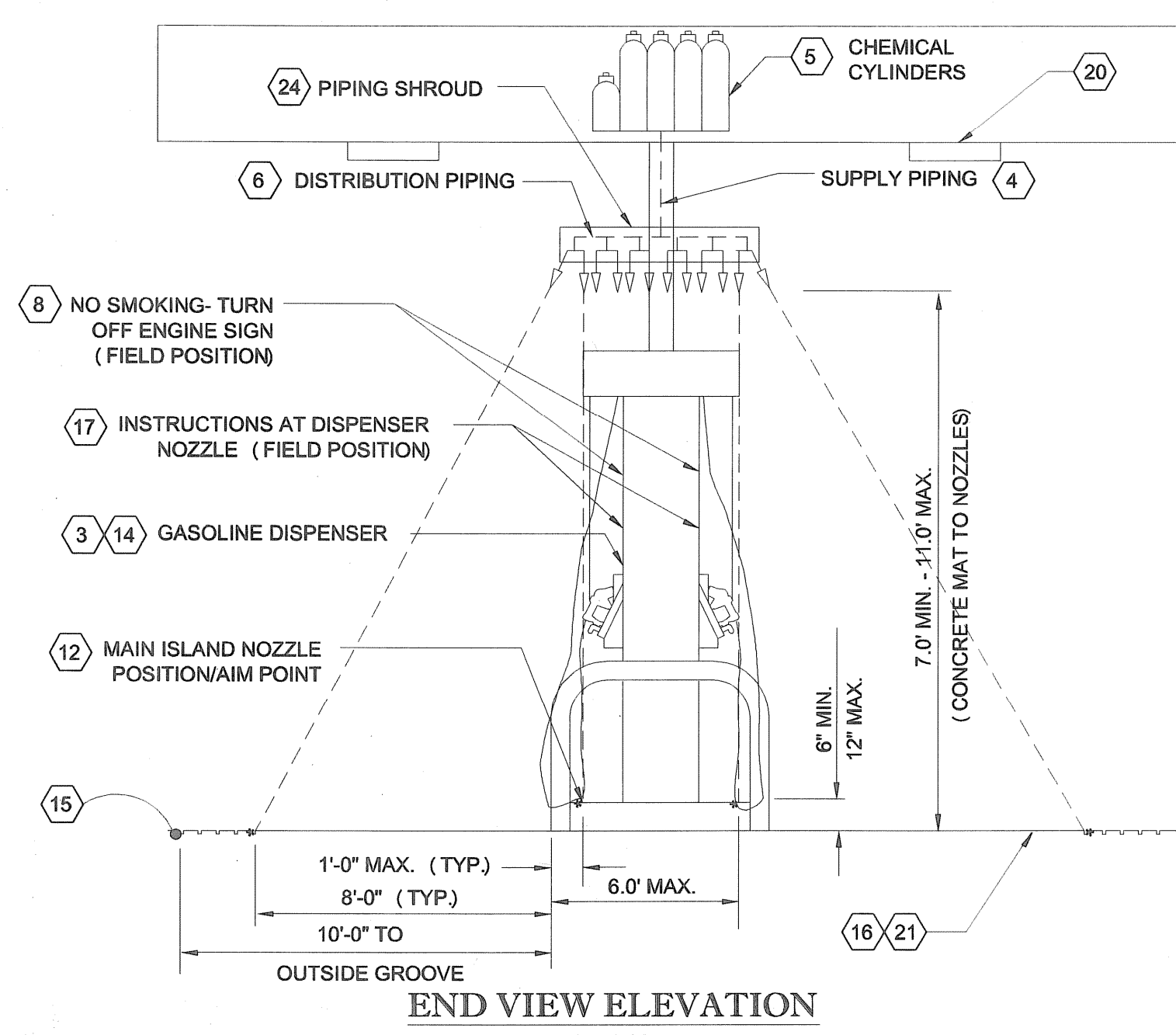
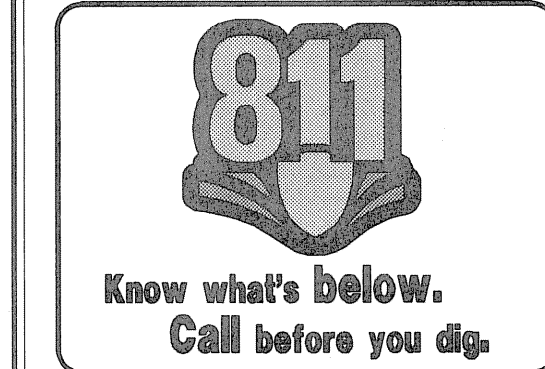


BRIGHTON AVENUE (A.K.A. ROUTE 25) (PUBLIC - VARIABLE WIDTH)

SITE PLAN SCALE: 1" = 30'-0"



PLAN VIEW SCALE: NONE



END VIEW ELEVATION NOT TO SCALE

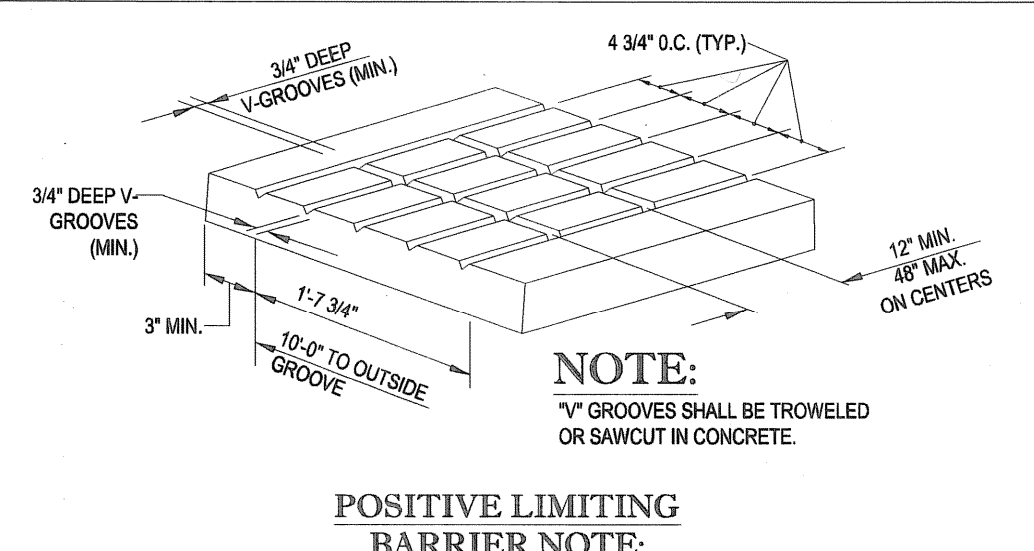
SPECIAL NOTE:
 IN THE EVENT OF A CONFLICT BETWEEN THIS DRAWING AND THE UL LISTED PYRO-CHEM, INC. "THE ATTENDANT" TECHNICAL MANUAL, THE TECHNICAL MANUAL SHALL GOVERN. NOTIFY ENGINEER IMMEDIATELY OF ANY CONFLICT.

SPECIAL INSTALLATION NOTES:
 1. DO NOT PAINT THE HEAT SENSORS.
 2. PITCH ELECTRICAL CONDUIT AWAY FROM THE ELECTRICAL JUNCTION BOXES.
 3. ALL CONDUIT RUNS AND JUNCTION BOXES ARE TO BE SECURED TO THE TOP OF THE PURLINS AS DETAILED ON THIS DRAWING.
 4. ALL RIGID METAL CONDUIT THREADS TO BE SEALED USING TEFLON PASTE FOR WATERTIGHT INSTALLATION.

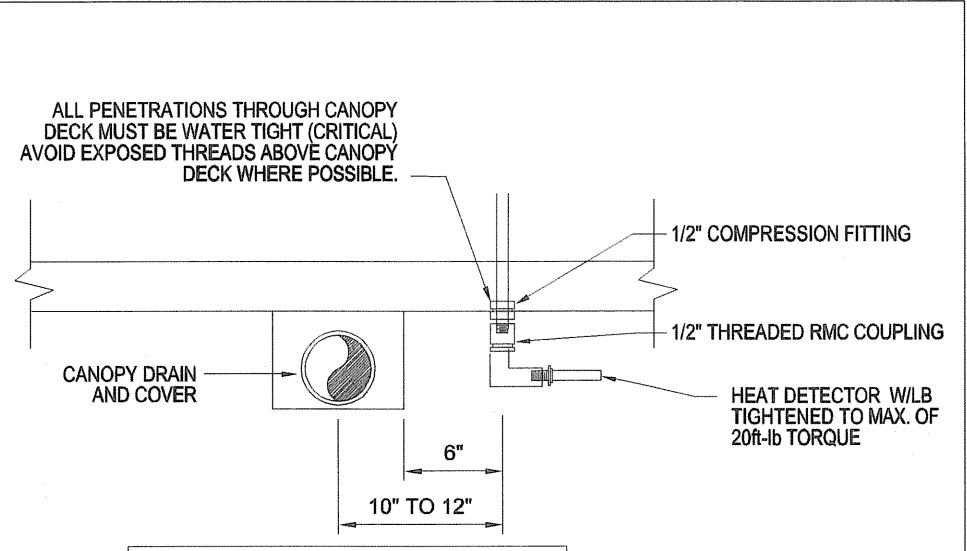
WARNING NO SMOKING-STOP MOTOR
 IT IS UNLAWFUL AND DANGEROUS TO DISPENSE GASOLINE INTO UNAPPROVED CONTAINERS.
 NO FILLING OF PORTABLE CONTAINERS IN OR ON A MOTOR VEHICLE OR TRAILER.
 PLACE CONTAINER ON GROUND BEFORE FILLING.

8 NO SMOKING TURN-OFF ENGINE SIGN
 NOT TO SCALE

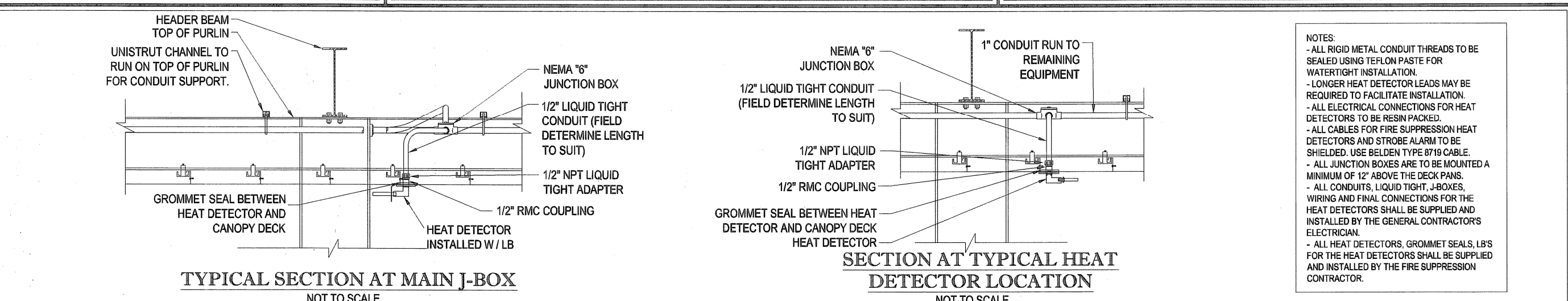
NOTES:
 DIMENSIONS 18" BY 24" WHITE BACKGROUND WITH RED MASKING
 LETTERING SIZE AND ARRANGEMENT SHALL BE IN BLOCK LETTERS MIN. HEIGHT 2". AS SHOWN TO RIGHT.



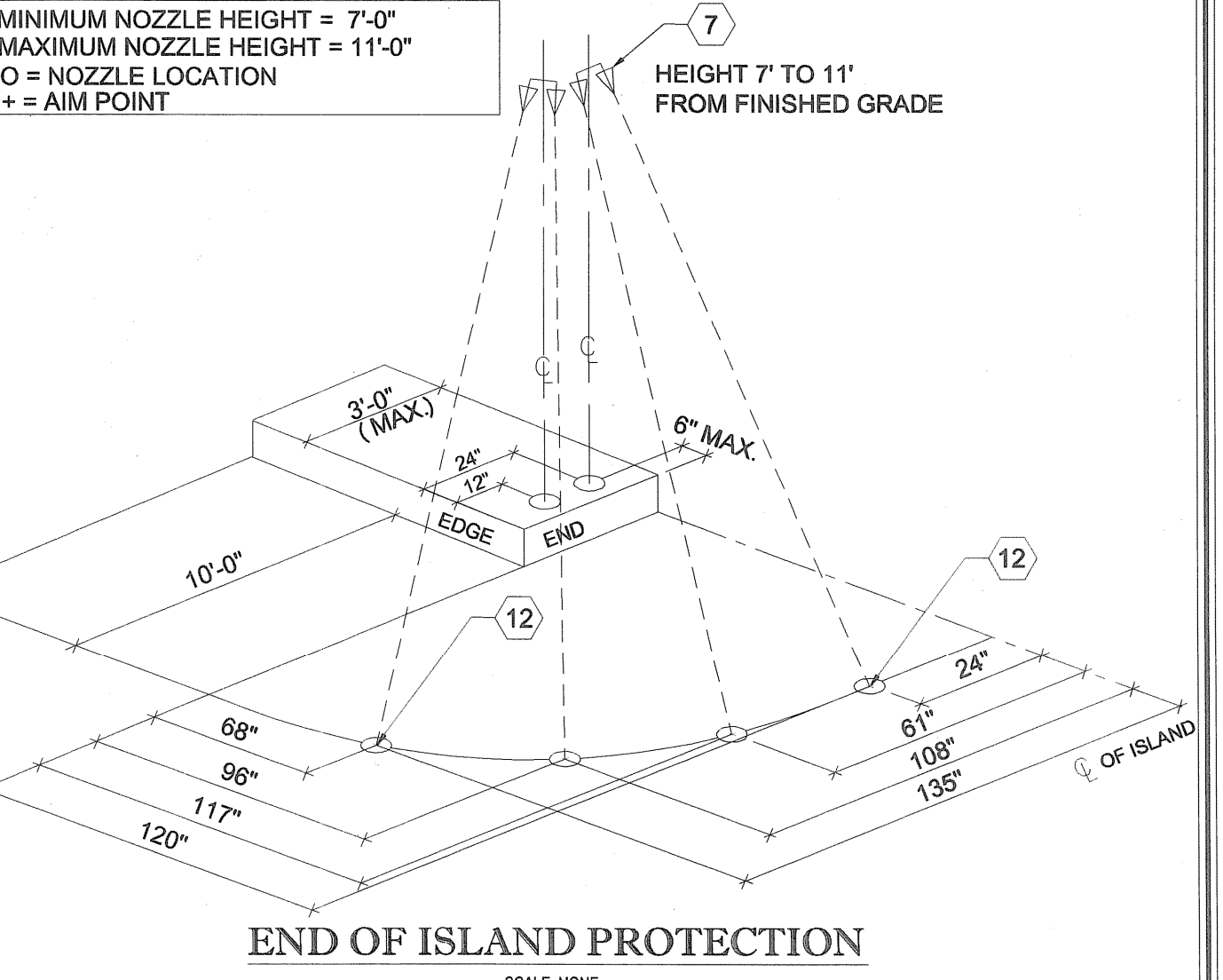
15 POSITIVE LIMITING BARRIER SAWCUTS AND PATTERNS
 NOT TO SCALE



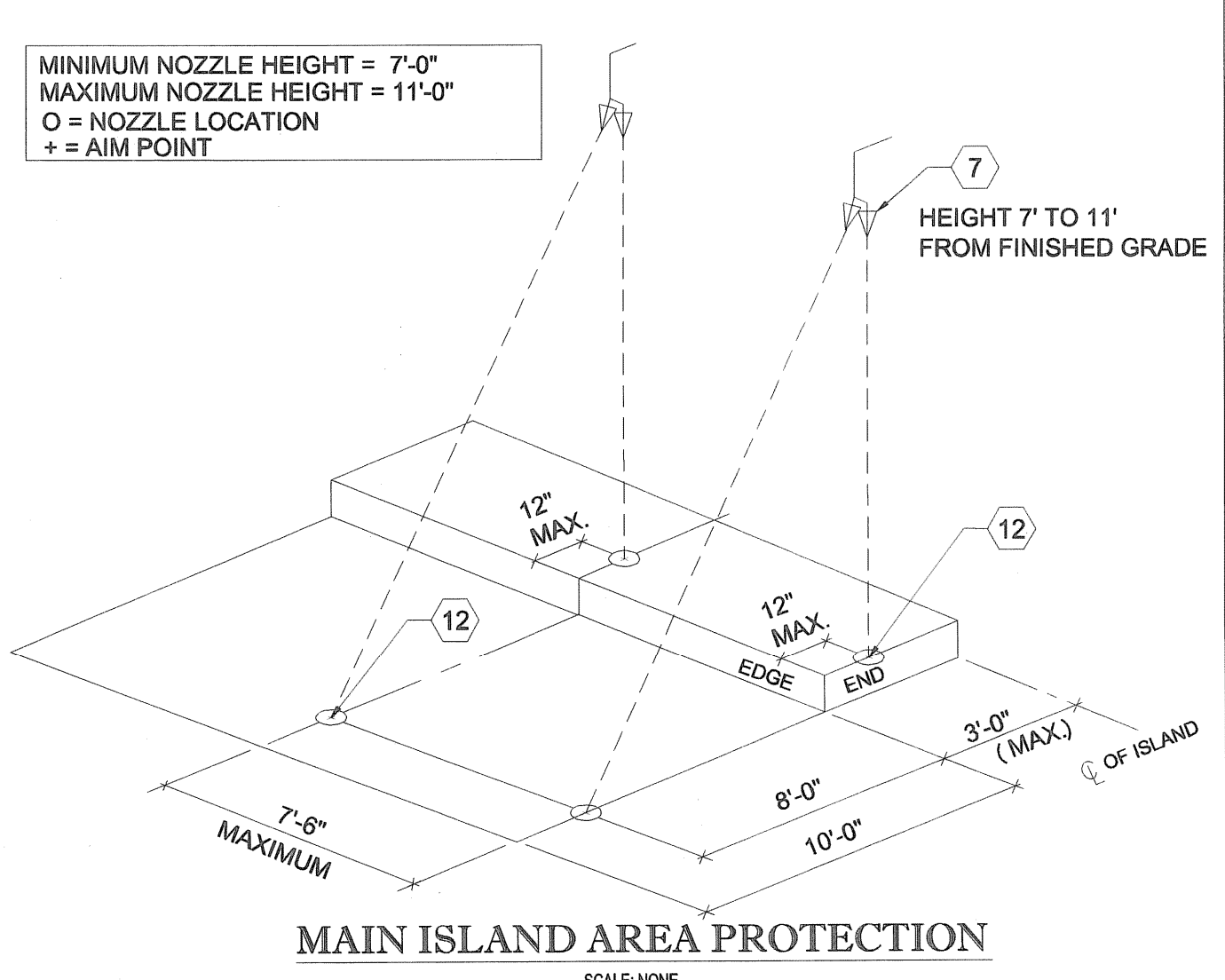
TYPICAL HEAT DETECTOR LOCATION
 NOT TO SCALE



SECTION AT TYPICAL HEAT DETECTOR LOCATION NOT TO SCALE



END OF ISLAND PROTECTION SCALE: NONE



MAIN ISLAND AREA PROTECTION SCALE: NONE

LEGEND

1. 180" HIGH TEMP. AUTOMATIC THERMOSTAT INSTALLED ON 15 FOOT MAXIMUM CENTERS INTERCONNECTED TO FIRE SUPPRESSION SYSTEM CENTER OF EACH ISLAND ABOVE DISPENSERS.
2. CCTV CAMERA MOUNTED TO CANOPY COLUMN AT ISLAND WITH CCTV MONITOR(S) LOCATED NEAR CASH REGISTER AT THE TRANSACTION AREA WITHIN THE BUILDING. CCTV MONITORS SHALL DISPLAY ALL CAMERA ANGLES SIMULTANEOUSLY ON THE SCREEN WITH A MINIMUM PICTURE FRAME OF 5 INCHES BY 6 INCHES PER CAMERA.
3. INTERCOM SPEAKERS AT EACH DISPENSER WITH MASTER CONTROL LOCATED AT CENTRAL CONTROL AREA.
4. OVERHEAD FIRE SUPPRESSION PIPING (SUPPLY).
5. DRY CHEMICAL CYLINDERS AS REQUIRED BY MANUFACTURER OF SUPPRESSION SYSTEM WITH REFERENCE TO UL APPROVED INSTALLATION AND MAINTENANCE MANUAL.
6. OVERHEAD FIRE SUPPRESSION PIPING (DISTRIBUTION).
7. NOZZLE.
8. NO SMOKING AND TURN OFF ENGINE SIGN.
9. GASOLINE DISPENSER CONTROL CONSOLE EQUIPMENT WITH COMPLETE EQUIPMENT SHUTDOWN EMERGENCY MODE UL APPROVED.
10. HAND OPERATED 40 BC FIRE EXTINGUISHER.
11. CONTROL CENTER.
12. FIRE SUPPRESSION STRIKE POINT - FOR END OF ISLAND NOZZLE AIM POINTS REFER TO THE UL LISTED PYRO-CHEM, INC. "THE ATTENDANT" TECHNICAL MANUAL.
13. SUPPORT COLUMN.
14. GASOLINE OR DIESEL DISPENSER UL APPROVED WITH AUTOMATIC CREDIT CARD READING DEVICE.
15. POSITIVE LIMITING BARRIER AROUND PERIMETER OF SELF SERVE GASOLINE DISPENSING AREA.
16. SELF SERVE GASOLINE DISPENSING AREA.
17. APPROPRIATE INSTRUCTIONS FOR USE AT EACH SELF SERVE DISPENSING NOZZLE.
18. TRAFFIC FLOW ARROWS.
19. SAFETY BARRICADE.
20. LIGHTING WITHIN SELF SERVE DISPENSING AREA.
21. CONCRETE MAT SURROUNDING THE DISPENSING AREA SHALL BE MADE AS LEVEL AS POSSIBLE.
22. FACILITY.
23. MANUAL RELEASE LOCATED IN CONTROL CENTER CONVENIENT TO ATTENDANT. REMOTE RELEASE ENGINEERED BY FACTORY. INSTALLED BY AUTHORIZED FIRE SUPPRESSION CONTRACTOR.
24. THE PIPING SHROUD SHALL NOT NEGATIVELY IMPACT OR INTERFERE WITH THE FIRE SUPPRESSION SYSTEM EXPELLENT AND ACTIVATION OF THE THERMOSTATS.

NOTES

- NOTES TAKEN FROM MAINE DEPARTMENT OF PUBLIC SAFETY CHAPTER 34 "SPECIAL REGULATIONS FOR ATTENDED SELF-SERVICE GASOLINE FACILITIES" PAGE 3 & 4.
1. NO ONE SHALL CONSTRUCT, RECONSTRUCT, CONVERT OR ALTER ANY SERVICE STATION TO PROVIDE ATTENDED SELF-SERVICE GASOLINE DISPENSING WITHOUT FIRST NOTIFYING THE OFFICE OF THE STATE FIRE MARSHAL IN WRITING OF THE TYPE AND ADDRESS OF THE FACILITY.
 2. EVERY GASOLINE SERVICE STATION SHALL BE UNDER THE DIRECT CONTROL OF THE OWNER, OPERATOR OR DULY AUTHORIZED EMPLOYEE WHO SHALL BE ON DUTY AT ALL TIMES THAT GASOLINE IS BEING SOLD OR DISPENSED.
 3. EACH FACILITY SHALL BE EQUIPPED WITH A FIXED FIRE EXTINGUISHING SYSTEM INSTALLED IN ACCORDANCE WITH NFPA88A, CODE FOR MOTOR DISPENSING FACILITIES AND REPAIR GARAGES, 2003 EDITION. THE SYSTEM SHALL PROVIDE PROTECTION FOR ALL PUMPS IN THE DISPENSING AREA. EACH EXTINGUISHER HEAD SHALL BE INSTALLED IN SUCH A MANNER THAT AN ACCUMULATION OF ICE OR SNOW WILL NOT ADVERSELY AFFECT THE PROPER FUNCTIONING OF THE SYSTEM.
 4. THE NUMBER OF NOZZLES CAPABLE OF SIMULTANEOUS OPERATION MAY NOT EXCEED SIXTEEN NOZZLES PER OPERATOR ON DUTY IN ISLANDS OPEN TO USE, AND NO MORE THAN EIGHT NOZZLES MAY BE IN USE AT ONE TIME.
 5. THE CONTROLLING MECHANISM CONSOLE AND ITS RELATED EQUIPMENT ARE TO BE LISTED BY UNDERWRITERS LABORATORIES.
 6. IN ADDITION TO THE REQUIRED OPERATING INSTRUCTIONS SET FORTH IN NFPA 88A, SIGNAGE SHALL INCLUDE A REQUIREMENT THAT THE USER STAY IN VIEW OF THE FUELING NOZZLE DURING DISPENSING.
 7. THE CONTROLLING CONSOLE PROVIDING POWER TO THE PUMP MOTOR MUST BE MONITORED BY THE OWNER, OPERATOR OR DULY AUTHORIZED EMPLOYEE AT ALL TIMES WITH GASOLINE IS BEING DISPENSED AND PROPERLY PROTECTED AGAINST PHYSICAL DAMAGE FROM MOTOR VEHICLES.
 8. THERE SHALL BE CONSTANT CONTACT BY THE CONTROL CONSOLE OPERATOR AND THE PUMP ISLAND BY MEANS OF INTER-COMMUNICATION SYSTEM THAT SHALL BE MAINTAINED IN PROPER OPERATING CONDITIONS.
 9. THE CONTROL CONSOLE OPERATOR MUST OBSERVE THE FILLING OPERATION OF EACH VEHICLE. MIRRORS ARE NOT ACCEPTABLE AS PROVIDING ADEQUATE VISUAL CONTROL.
 10. THE PRIMARY FIRE DEPARTMENT HAVING JURISDICTION OR PROVIDING MUTUAL AID IN THE AREA IN WHICH A PROPOSED SELF-SERVICE STATION IS TO BE LOCATED SHALL BE INFORMED OF SUCH PROPOSAL AND THE REQUIREMENTS OF ALL LOCAL ORDINANCE MUST BE MET.
 11. THE OPERATIONS PERMIT MUST BE POSTED IN THE PLAIN VIEW OF THE PUBLIC, UNOBSERVED, AT THE SITE.
 12. AN AUTOMATIC-CLOSING TYPE HOSE NOZZLE VALVE LISTED WITH LISTED LABORATORIES (OR OTHER RECOGNIZED AGENCY APPLYING AN EQUIVALENT TEST) WITH LATCH-OPEN DEVICE MAY BE INSTALLED.
 13. THE OWNER OR OPERATOR OF ANY ATTENDED SELF-SERVICE FACILITY EXISTING PRIOR TO THE DATE OF THIS RULE MUST NOTIFY THE OFFICE OF THE STATE FIRE MARSHAL IN WRITING OF BY JULY 1, 2006.

I, _____ CHIEF OF DEPARTMENT OR HIS DESIGNEE, HAVE REVIEWED THE ATTACHED INFORMATION AND HAVE ACKNOWLEDGMENT OF:
 CITY/TOWN: _____
 DATE: _____

FOR FIRE MARSHAL USE:

BOHLER ENGINEERING
 CORPORATE OFFICE:
 WAVEREN, NJ
 OFFICES:
 SOUTHBOROUGH, MA
 BOWLING GREEN, OH
 TOWSON, MD
 ROKONOCOMA, NY
 CENTER VALLEY, PA
 TAMPA, FL

PROJECT MANAGERS
 ENVIRONMENTAL CONSULTANTS
 LANDSCAPE ARCHITECTS

CIVIL & CONSULTING ENGINEERS
 SURVEYORS

REVISIONS

REV	DATE	COMMENT	BY
1	01/07/14	REVISED PER NEW TANKS	CFD
2			
3			
4			
5			
6			
7			
8			
9			
10			
11			
12			
13			
14			
15			

PERMIT PLAN

PROJECT No.: W041623
 DRAWN BY: CFD
 CHECKED BY: LMD
 DATE: 11/22/2013
 SCALE: AS NOTED
 CAD I.D.: PORTLAND 61

FIRE SUPPRESSION PLAN FOR

CUMBERLAND FARMS
 TANK AND DISPENSER REPLACEMENT
 V #1614
 STORE #5613
 GAS STATION #1848
 512 WOODFORD STREET
 CITY OF PORTLAND
 CUMBERLAND COUNTY
 MAINE

BOHLER ENGINEERING
 352 TURNPIKE ROAD
 SOUTHBOROUGH, MA 01772
 Phone: (508) 480-8600
 Fax: (508) 480-9800
 www.BohlerEngineering.com

S.P. DECOURSEY
 PROFESSIONAL ENGINEER
 MASSACHUSETTS LICENSE NO. 10227
 NEW HAMPSHIRE LICENSE NO. 10227
 VERMONT LICENSE NO. 10227
 CONTRACTING LICENSE NO. 10227
 RICHMOND, VT 05462

SHEET TITLE:
PYRO-CHEM, INC. "THE ATTENDANT" GASOLINE FIRE SUPPRESSION SYSTEM

SHEET NUMBER:
CFG11.0

FIRE SUPPRESSION NOTES:

1. FIRE SUPPRESSION SYSTEM AND ASSOCIATED COMPONENTS SHALL BE INSTALLED BY A LICENSED FIRE SUPPRESSION SYSTEM INSTALLER CERTIFIED FOR SUCH INSTALLATION BY THE SYSTEM MANUFACTURER.
2. THE PROPOSED FIRE SUPPRESSION SYSTEM AND SYSTEM COMPONENTS SHALL BE INSTALLED IN ACCORDANCE WITH ALL APPLICABLE CODES AND REGULATIONS. INSTALLATION OF THIS SYSTEM SHALL CONFORM TO THE REQUIREMENTS OF THE SYSTEM MANUFACTURER, THE PORTLAND FIRE DEPARTMENT, AND ALSO THE MAINE FIRE MARSHAL'S OFFICE REQUIREMENTS.
3. SYSTEM INSTALLER IS RESPONSIBLE FOR REVIEWING THIS PLAN FOR COMPLIANCE WITH THE REQUIREMENTS OF THE SYSTEM MANUFACTURER PRIOR TO INSTALLATION. IT IS THE INSTALLER'S RESPONSIBILITY TO NOTIFY THE ENGINEER OF RECORD IMMEDIATELY OF ANY CONFLICTS. FAILURE TO NOTIFY THE ENGINEER OF RECORD SHALL CONSTITUTE ACCEPTANCE OF FULL RESPONSIBILITY BY THE CONTRACTOR TO COMPLETE THE SCOPE OF WORK AS DEFINED BY THE DRAWINGS AND IN FULL CONFORMANCE WITH ALL APPLICABLE CODES AND REQUIREMENTS.
4. THIS PLAN WAS PREPARED USING THE SYSTEM MANUFACTURERS GUIDELINES AND IS INTENDED FOR GENERAL LAYOUT PURPOSES ONLY.

GENERAL NOTES:

1. THE ELECTRICAL THERMOSTAT DETECTORS SHALL BE MOUNTED ON THE CANOPY'S UNDERSURFACE, PROVIDED THE HEIGHT DOES NOT EXCEED 15 FEET ABOVE THE CONCRETE MAT OR ON THE UNDERSIDE OF AN 18"x18"x2" HEAT COLLECTOR AND NO HIGHER THAN THE NOZZLES.
2. IN THE EVENT THAT A CANOPY SUPPORT BEAM INTERFERES WITH INSTALLING THE HEAT DETECTOR ALONG THE CENTER OF THE ISLAND, THEN THE DETECTORS MAY BE OFFSET NO MORE THAN 12" TO CLEAR THE BEAM. IF THE BEAM EXTENDS BELOW THE FLAT CANOPY DECK, THEN AN ADDITIONAL LOCATION MUST BE ADDED AT EACH AFFECTED LOCATION (A DETECTOR ON EACH SIDE OF THE PROTRUDING BEAM).
3. NOZZLE AND HOSE FROM EACH PETROLEUM PRODUCT DISPENSER SHALL NOT EXTEND BEYOND POSITIVE LIMITING BARRIER AND NO PETROLEUM PRODUCT SHALL BE DISPENSED BEYOND POSITIVE LIMITING BARRIER.