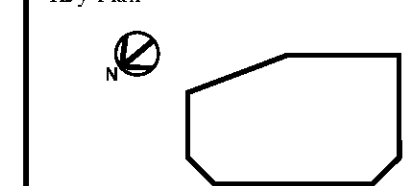


No.	Date	Issued for
1	11/22/13	90% Review Set
2	01/24/14	Bid and Permit



FIRE ALARM SYSTEM

- CEILING MOUNTED AUDIBLE/VISUAL DEVICE, SUB-SCRIPT INDICATES CANDELA RATING.
- CEILING MOUNTED VISUAL DEVICE, SUB-SCRIPT INDICATES CANDELA RATING. STROBES SHALL BE SYNCHRONIZED AND COMPLY WITH ADA.
- MANUAL PULL STATION, MOUNTING HEIGHT 48" TO CENTERLINE AFF
- SMOKE DETECTOR, "D" INDICATES DUCT MOUNTED SMOKE DETECTOR
- COMBINATION RATE OF RISE AND ONE HUNDRED THIRTY-FIVE DEGREE (135° F) TO ONE HUNDRED FORTY DEGREE (140° F) FIXED TEMPERATURE HEAT DETECTOR. "F" INDICATES FIXED ONE HUNDRED NINETY DEGREE (190° F) TO TWO HUNDRED DEGREE (200°) FIXED TEMPERATURE ONLY. "CLG" INDICATES ABOVE CEILING.
- RED INDICATING BEACON, EXTERIOR MOUNTED, WEATHERPROOF
- FIRE ALARM MODULE CONTROL MODULE
- FIRE ALARM MONITOR MODULE
- FIRE DEPARTMENT KEY BOX
- REMOTE TEST STATION AND LED
- FIRE ALARM ANNUNCIATOR PANEL
- FIRE ALARM CONTROL PANEL
- FIRE ALARM TERMINAL CABINET
- RELAY
- FIRE ALARM RADIO MASTER BOX

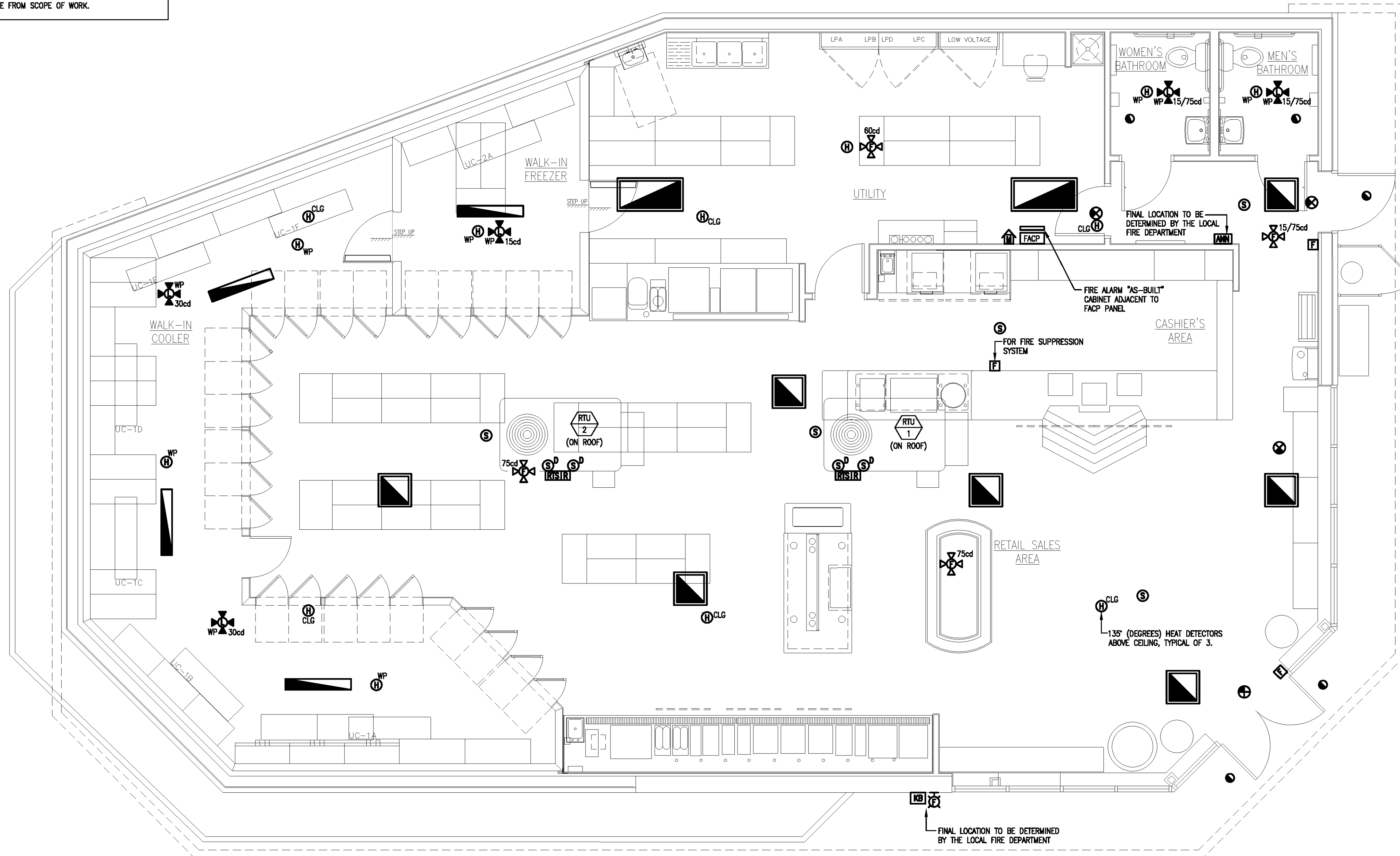
EMERGENCY LIGHTING SYMBOLS

- LIGHTING FIXTURE CONTAINS AN EMERGENCY BALLAST. SEE LIGHTING NOTE #5.
- EMERGENCY BATTERY UNIT WITH TWO (2) HEADS
- EXIT SIGN, SHADED REGION INDICATES FACE
- WALL MOUNTED REMOTE HEAD.

FIRE ALARM NOTES

1. THE ELECTRICAL CONTRACTOR SHALL COMPLETE A CERTIFICATE CERTIFYING THAT THE SYSTEM HAS BEEN 100 PERCENT TESTED AND FUNCTIONS IN COMPLETE COMPLIANCE WITH THE SYSTEM SPECIFICATIONS AND MANUFACTURER'S RECOMMENDATIONS. THE CERTIFICATE SHALL BE SIGNED BY THE INSTALLER, ELECTRICAL CONTRACTOR AND THE OWNER. AFTER RECEIPT OF THE CERTIFICATION, THE FIRE PREVENTION OFFICER AND/OR THE FIRE ALARM SUPERVISOR WILL CONDUCT AN INSPECTION IN THE COMPANY OF THE INSTALLER AND A REPRESENTATIVE OF THE OWNER WITHIN SCOPE OF WORK.
2. ALL PULL STATIONS MUST BE OF THE DOUBLE ACTION TYPE. BREAKGLASS RODS WILL NOT BE PERMITTED.
3. ALL FIRE ALARM VISUAL DEVICES SHALL BE SYNCHRONIZED.
4. ALL WIRING METHODS SHALL BE AS APPROVED BY THE WIRING INSPECTOR AND THE FIRE DEPARTMENT.
5. ALL SYSTEM COMPONENTS SHALL BE UL LISTED.
6. ALL WIRING SHALL BE IN ACCORDANCE WITH THE NATIONAL ELECTRICAL CODE, NFPA 72 SERIES PAMPHLETS, AND ALL STATE AND LOCAL CODES.
7. CONTROL PANELS HAVING ZONE LABELING ON AN OUTSIDE DOOR WITH ZONE LAMPS MOUNTED ON AN INSIDE PANEL SHALL HAVE ZONE LABELING INSIDE THE PANEL ALSO, TO INDICATE ZONES WHEN DOOR IS OPENED.
8. THE ELECTRICAL CONTRACTOR MUST OBTAIN AN ELECTRICAL PERMIT FROM THE TOWN BUILDING DEPARTMENT AND A PERMIT FROM THE FIRE DEPARTMENT PRIOR TO COMMENCEMENT OF EQUIPMENT INSTALLATION. A FLOOR PLAN SHOWING ALL ALARM DEVICES, LOCATION OF MASTER BOX, PANELS, ANNUNCIATORS, A ONE-LINE WIRING DIAGRAM AND AN ANNUNCIATOR DETAIL SHOWING ZONE LABELING WILL BE REQUIRED TO BE SUBMITTED BEFORE THE FIRE DEPARTMENT ISSUES A PERMIT.
9. INSTALLATION OF EQUIPMENT SHALL BE IN ACCORDANCE WITH CURRENT STANDARDS AND SPECIFICATIONS APPROVED BY THE AUTHORITY HAVING JURISDICTION.
10. ALL FIRE ALARM EQUIPMENT, INSTALLATION AND OPERATION SHALL BE IN CONFORMANCE WITH THE LOCAL FIRE DEPARTMENT INSTALLATION REQUIREMENTS AND SYSTEM INSTALLATION GUIDELINES.
11. ALL EQUIPMENT SHOWN ON DRAWINGS IS DIAGRAMMATIC.
12. PROVIDE AND INSTALL ALL NECESSARY WIRE, CONDUIT, RELAYS AND CONNECTIONS FROM ALL DUCT SMOKE DETECTORS TO THEIR ASSOCIATED EXHAUST FAN AND SUPPLY FAN CONTROLLERS. UPON ACTIVATION OF A DUCT SMOKE DETECTOR, IN ADDITION TO SOUNDING THE GENERAL ALARM, THE DUCT SMOKE DETECTOR SHALL IMMEDIATELY SHUT DOWN THE ASSOCIATED FAN.
13. THE FIRE ALARM SYSTEM SHOP DRAWINGS SHALL BE REVIEWED AND APPROVED BY BOTH THE ENGINEER AND THE LOCAL FIRE DEPARTMENT. THE SHOP DRAWINGS MUST BE SIGNED OFF BY THE FIRE DEPARTMENT AND ENGINEER PRIOR TO ORDERING AND INSTALLATION OF EQUIPMENT.
14. ALL WORK INSIDE OF THE BUILDING SHALL BE THE RESPONSIBILITY OF THE CONTRACTOR.
15. ALL JOINTS AND CONNECTIONS SHALL BE IN JUNCTION BOXES. ALL CONNECTIONS NOT ON APPROVED TERMINAL STRIPS SHALL BE SOLDERED AND TAPED. ALL JUNCTION BOXES SHALL BE PAINTED RED.
16. ALL EQUIPMENT SHALL BE MADE AVAILABLE FOR TEST AND INSPECTION WHEN REQUIRED BY THE FIRE DEPARTMENT.
17. ALL EQUIPMENT USED SHALL BE OF A TYPE APPROVED BY THE FIRE CHIEF THROUGH THE ALARM SUPERINTENDENT AND THE FIRE PREVENTION OFFICER.
18. ALL SYSTEMS SHALL BE DC, SUPERVISED, BATTERY STANDBY FIRE ALARM SYSTEM. A SEPARATE AC CIRCUIT MUST BE PROVIDED FOR THE FIRE ALARM SYSTEM. STANDBY BATTERIES AND THE CHARGING SYSTEM SHALL BE SUPERVISED.
19. THE BATTERIES USED WITH THE FIRE ALARM CONTROL PANEL SHALL BE CAPABLE OF OPERATING THE PANEL FOR TWENTY-FOUR (24) HOURS WITH A FIVE (5) MINUTE RING-DOWN AT THE END OF THE TWENTY-FOUR (24) HOUR PERIOD. THE CALCULATION USED TO DETERMINE BATTERY CAPACITY SHALL BE PRESENTED TO THE FIRE DEPARTMENT AT THE TIME OF INSPECTION. PROVIDE BATTERY CALCULATIONS WITH SHOP DRAWINGS.
20. ALL FIRE ALARM CONTROL PANELS SHALL HAVE A SIGN, RED IN COLOR, WITH THE WORDS "FIRE ALARM CONTROL" ENGRAVED ON IT. THE SIGN SHALL BE ON THE FRONT OF THE PANEL WITH MINIMUM ONE (1) INCH LETTERS.
21. UPON ACTIVATION OF ANY FIRE ALARM DEVICE, THE CONTROL PANEL SHALL SOUND THE EVACUATION SIGNALS, FLASH THE EVACUATION LIGHTS, INDICATE THE ZONE OF ACTIVATION AT THE PANEL AND ACTIVATE THE AUTO DIALER.
22. THE VISUAL INDICATORS OF THE EVACUATION SIGNALS MUST STAY ILLUMINATED UNTIL THE SYSTEM IS RESET.

FIRE ALARM NOTES:
1. ELECTRICAL CONTRACTOR TO PROVIDE HEAT DETECTORS (CONVENTIONAL TYPE) & STROBES IN THE WALK-IN FREEZERS/ COOLERS, AS SHOWN ON PLANS, UNLESS CONTRACTOR GETS WRITTEN APPROVAL FROM THE LOCAL FIRE DEPARTMENT TO DELETE FROM SCOPE OF WORK.



ELECTRICAL: FIRE ALARM
SCALE: 1/4"=1'-0"