

LEGEND

WALL.

1 HOUR CONSTRUCTION

EMERGENCY LIGHTING

MANUAL FIRE ALARM BOX
(PULL STATION)

EXIT SIGN

MULTIPLE-STATION SMOKE ALARM
WITH AUDIO / VISUAL NOTIFICATION.

CARBON MONOXIDE ALARM WITH
AUDIO / VISUAL NOTIFICATION

ANNUNCIATOR PANEL

KNOX BOX

SYSTEM SMOKE DETECTOR
WITH AUDIO / VISUAL
NOTIFICATION

FIRE EXTINGUISHER

KEYED NOTES

① GAS FIRED BOILER.

② WATER HEATER.

③ GAS FIRED BOILER EXHAUST VENT.

④ SPRINKLER RISER.

⑤ SEWER EXIT.

⑥ GAS ENTRY.

⑦ WATER ENTRY.

⑧ ELEC. / PHONE ENTRY.

⑨ GAS FIRED BOILER EXHAUST DUCT.

⑩ RANGE HOOD EXHAUST VENT (HARD DUCTED).

⑪ BATHROOM EXHAUST FAN VENT (HARD DUCTED).

⑫ RANGE HOOD EXHAUSTS IN THIRD FLOOR
KITCHEN ARE HARD DUCTED THRU THE ROOF.

⑬ CONCRETE SLAB.

⑭ VERTICAL WHEELCHAIR LIFT.

E

F

X

S

C

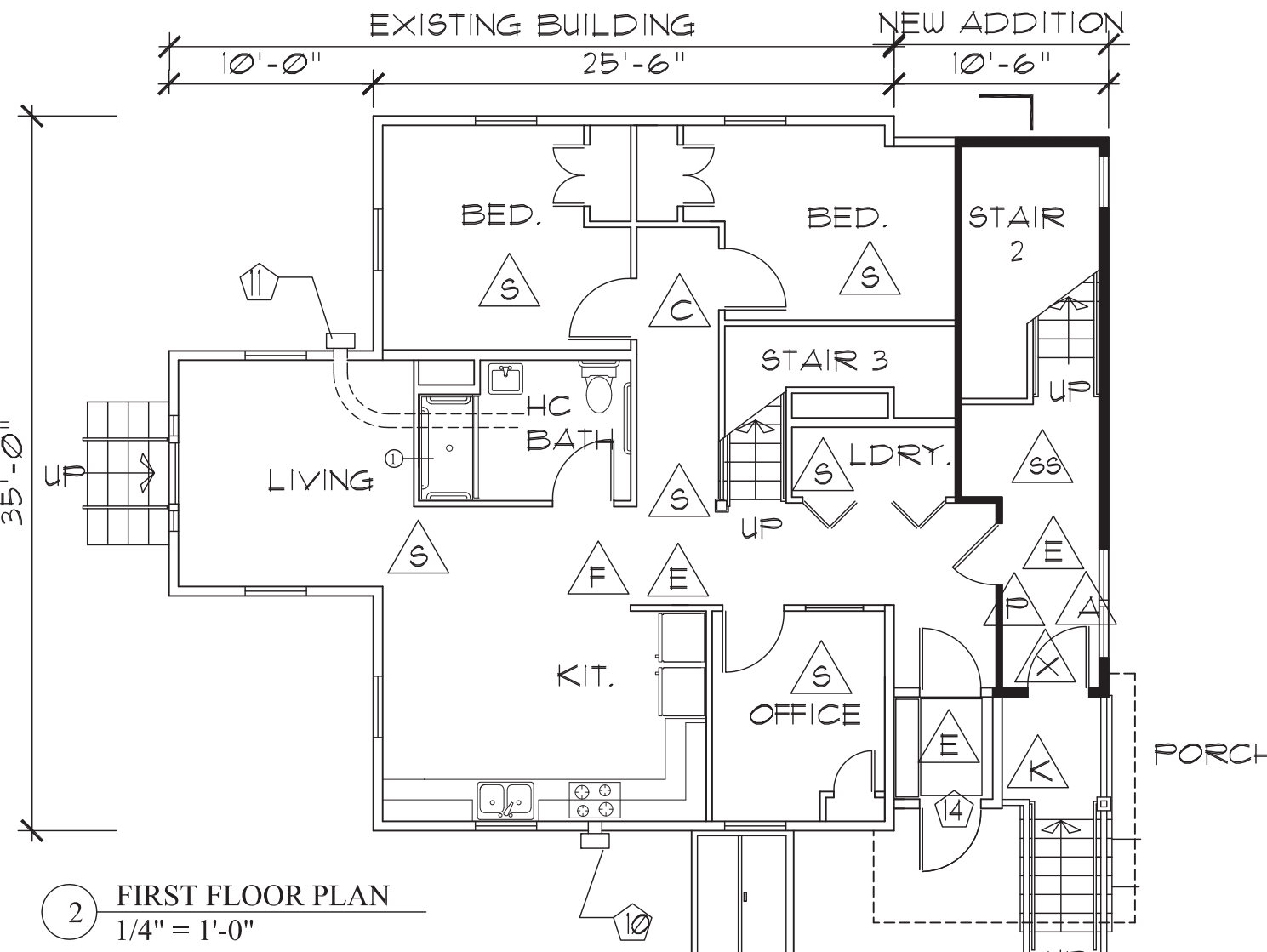
A

K

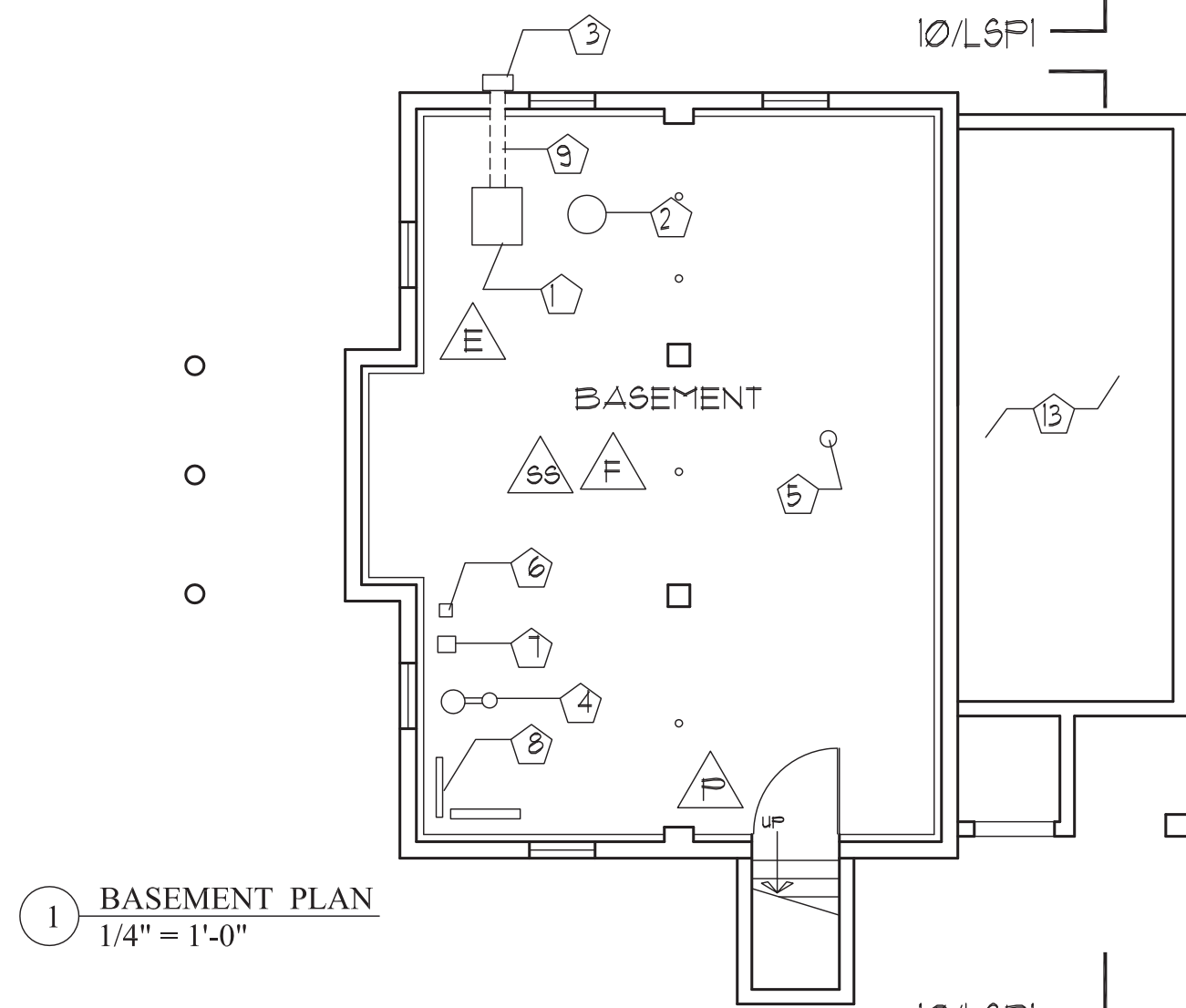
SS

SS

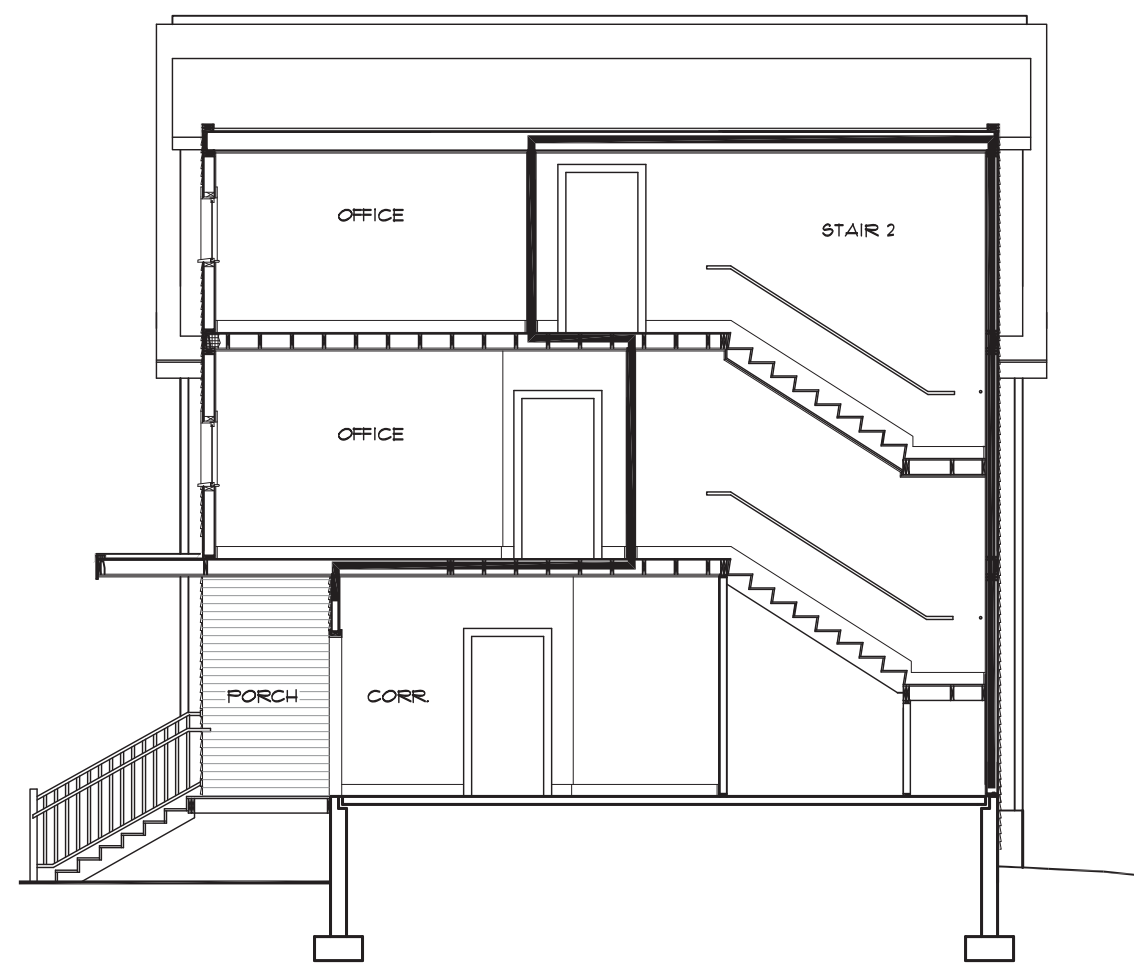
F



2 FIRST FLOOR PLAN
1/4" = 1'-0"



1 BASEMENT PLAN
1/4" = 1'-0"



5 SECTION @ STAIR ADDITION
1/8" = 1'-0"

PROJECT DESCRIPTION

THE PROJECT CONSISTS OF THE RENOVATION OF AN EXISTING, 4 STORY
(INCLUDING BASEMENT), WOOD FRAMED BUILDING.

THE EXISTING OCCUPANCY IS MIXED USE - BUSINESS ON THE FIRST AND SECOND
FLOOR, AN APARTMENT ON THE THIRD FLOOR.

PROPOSED OCCUPANCY

MIXED USE: A RESIDENTIAL BOARD AND CARE OCCUPANCY ON THE FIRST AND
SECOND FLOORS, AN APARTMENT ON THE THIRD FLOOR.

LIFE SAFETY

THE BUILDING WILL BE FULL SPRINKLED PER NFPA 13R. THE SPRINKLER SYSTEM
WILL BE SUPERVISED.

EGRESS WINDOWS IN SLEEPING ROOMS ARE REQUIRED PER STATE OF MAINE
STATUTE TITLE 25, SECTION 2453.

THE BUILDING WILL HAVE A FIRE ALARM SYSTEM, DEVICES ARE SHOWN ON LIFE
SAFETY PLANS.

THE TWO OCCUPANCIES WILL BE SEPARATED BY 1 HOUR RATED CONSTRUCTION
AS SHOWN ON THE LIFE SAFETY PLANS AND SECTION. PENETRATIONS OF THE
RATED SEPARATION WILL BE FIRE SEALED. BATHROOM EXHAUST FANS ARE
RATED FOR USE IN ONE HOUR CONSTRUCTION AND INCLUDE FIRE DAMPERS.

A STAIR TOWER WILL BE CONSTRUCTED AT THE REAR OF THE BUILDING
PROVIDING AN ENCLOSED ONE HOUR RATED MEANS OF EGRESS FOR BOTH
OCCUPANCIES. DOORS OPENING ONTO THE STAIR TOWER ARE RATED FOR USE IN
ONE HOUR CONSTRUCTION.

CODE ANALYSIS - NFPA 2009

CHAPTER 32 - NEW RESIDENTIAL BOARD & CARE OCCUPANCY

CHAPTER 31 - EXISTING APARTMENT BUILDING.

MEANS OF ESCAPE -

PRIMARY - INTERIOR STAIR PER 32.2.2.4 & 31.2.4.3.

SMOKE DETECTORS & ALARMS - REQUIRED PER 32.2.3.4.3

Smoke Detectors and Alarms Notes:

1. Only hardwired, battery back-up, single station smoke alarms shall be used within residential units. They shall be interconnected with the unit. Smoke alarms are located on the plans and identified in the Legend.
2. System smoke detectors shall be electrically supervised and transmit alarms to an approved alarm receiving facility. Smoke detectors are located on the plans and identified in the Legend.

AUTOMATIC SPRINKLER SYSTEM - NFPA 13R PER 32.2.3.5.3.1.

Sprinkler Notes:

1. Per 32.2.3.5.3.1 all habitable areas and closets are to be sprinkled.
2. Per 32.2.3.5.4 the fire alarm system shall electrically supervise the sprinkler system and transmit alarms to an approved alarm receiving facility.

MANUAL FIRE ALARM SYSTEM - REQUIRED PER 32.2.3.4.

Manual Fire Alarm System Note:

1. Locations of manual fire alarm boxes (pull stations) are shown on the floor plans and identified in the Legend.

CARBON MONOXIDE ALARMS -

Carbon Monoxide Alarm Note:

1. Install hardwired, battery back-up, single station CO alarms within each residential unit and on each floor per NFPA 720, Chapter 9 and interconnect them within the unit.

FIRE EXTINGUISHERS - REQUIRED PER NFPA 1, SECTION 13.6.2.

Fire Extinguisher Note:

1. Install cabinet mounted, 10 pound dry chemical type extinguishers. Extinguishers are located on plans and identified in the Legend.

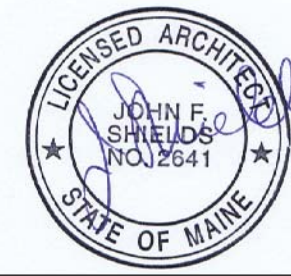
OCCUPANCY SEPARATION - 1 HOUR PER TABLE 6.1.14.4.1(b).

DWELLING UNIT SEPARATION - 1/2 HOUR PER 32.2.3.6.

CORRIDOR WALLS - 1/2 HOUR PER 32.2.3.6.

SLEEPING ROOM DOORS - 20 MIN. RATED PER 32.2.3.6.

FIRE EXTINGUISHERS - NOT REQUIRED BY CHAPTER 31 OF CHAPTER 32.



Owner:
SHALOM HOUSE, INC.
106 Gilman St., Portland, Maine

Architect:

SHIELDS ARCHITECTURE
Cumberland, Maine
(207) 776 8926

ADDITION & RENOVATIONS

503 WOODFORD STREET
PORTLAND, MAINE

Project:

Scale
1/8" = 1'-0"

Date
4/8/13

Revisions:
6/12/13 - revised per Portland Fire Dept.
comments dated 6/10/13.

LIFE SAFETY PLANS

Drawing

LSP-1