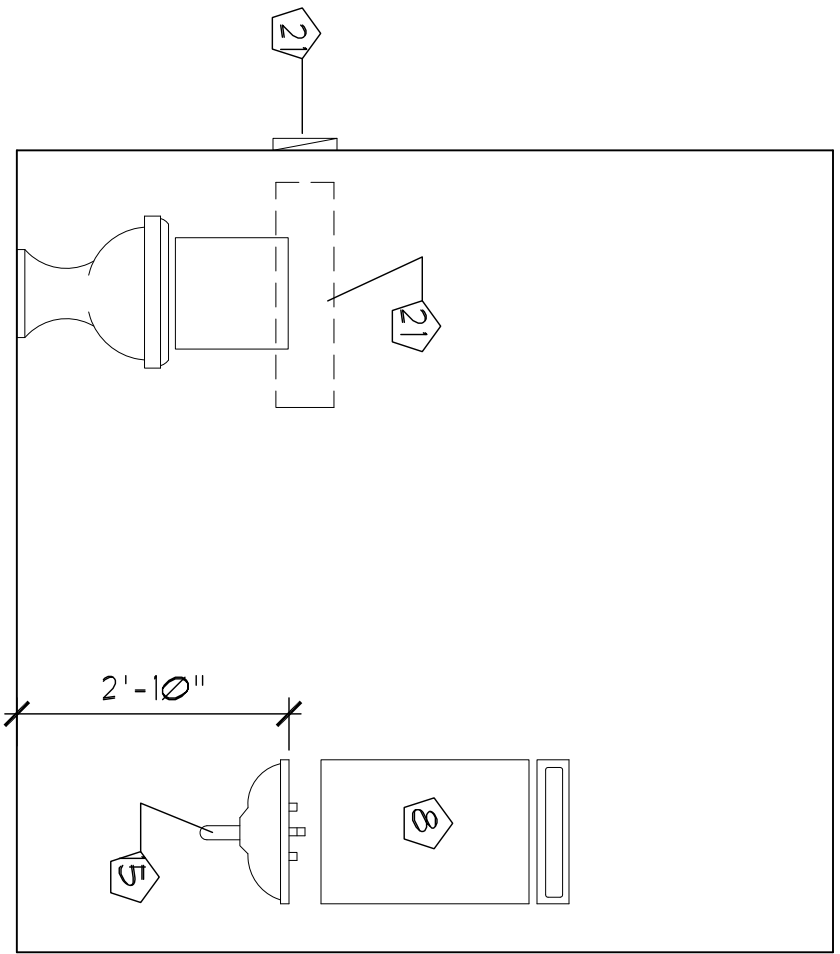
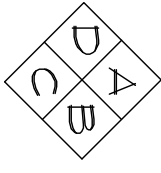
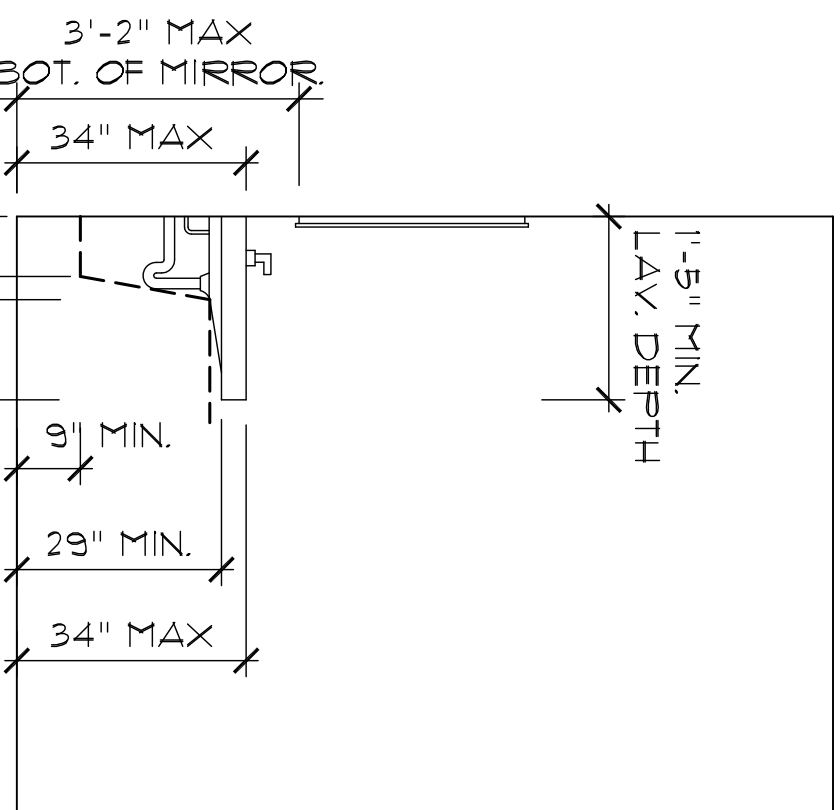


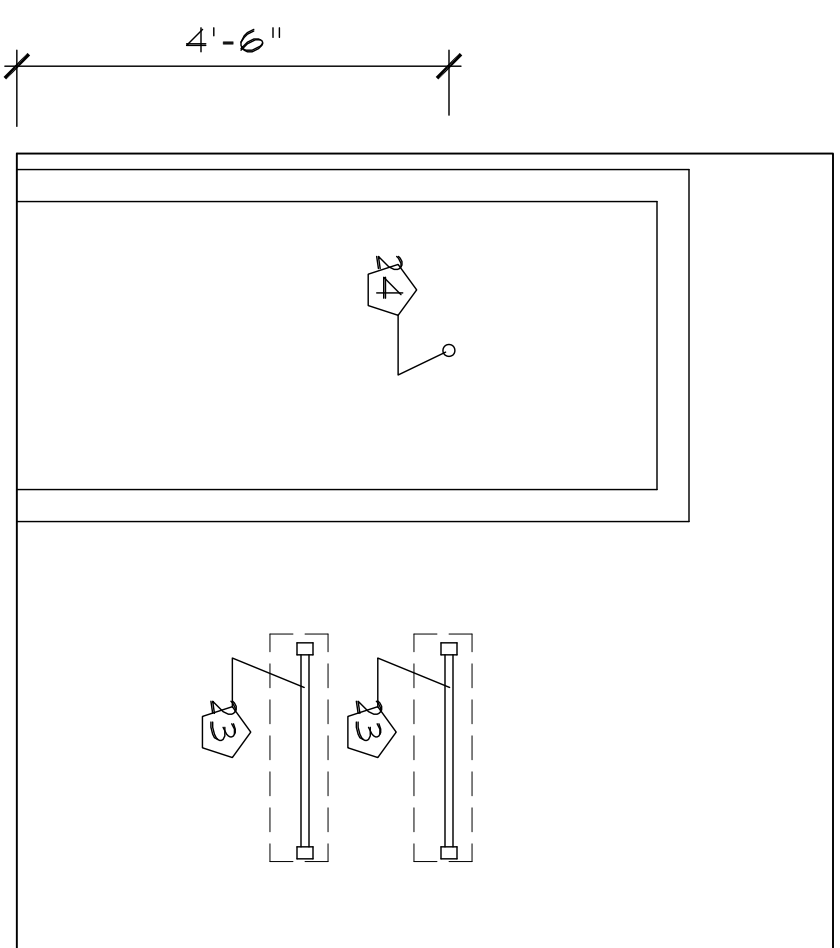
1 STAFF BATH 206 PLAN (ADA)  
SCALE: 1/2" = 1'



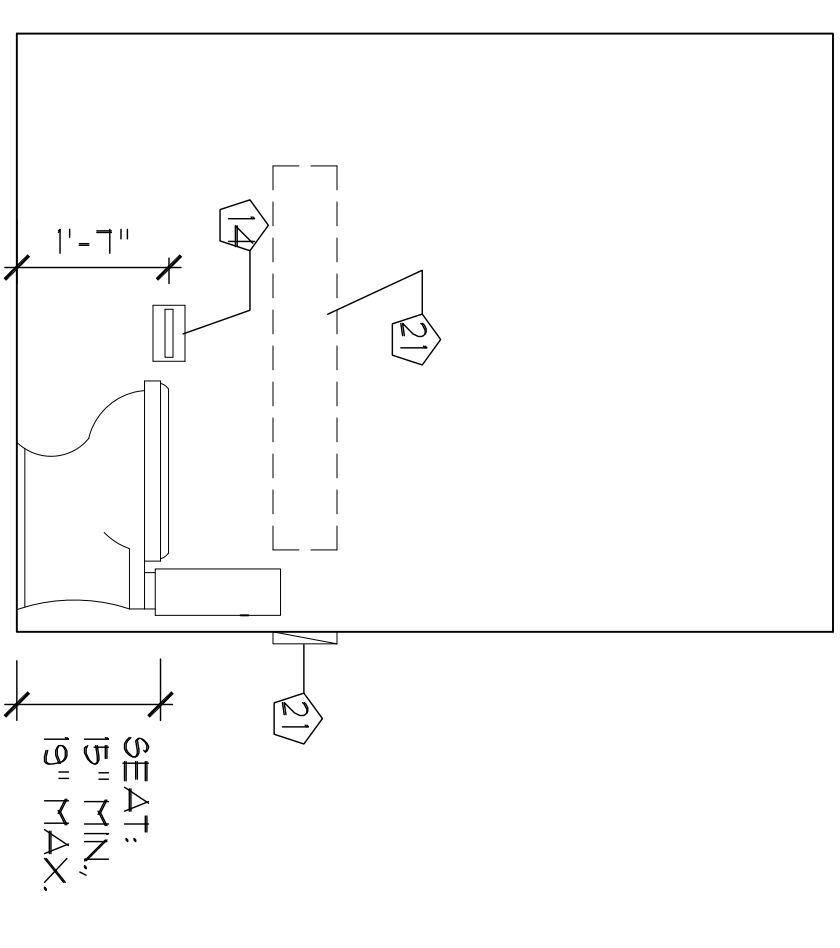
A ELEVATION  
SCALE: 1/2" = 1'



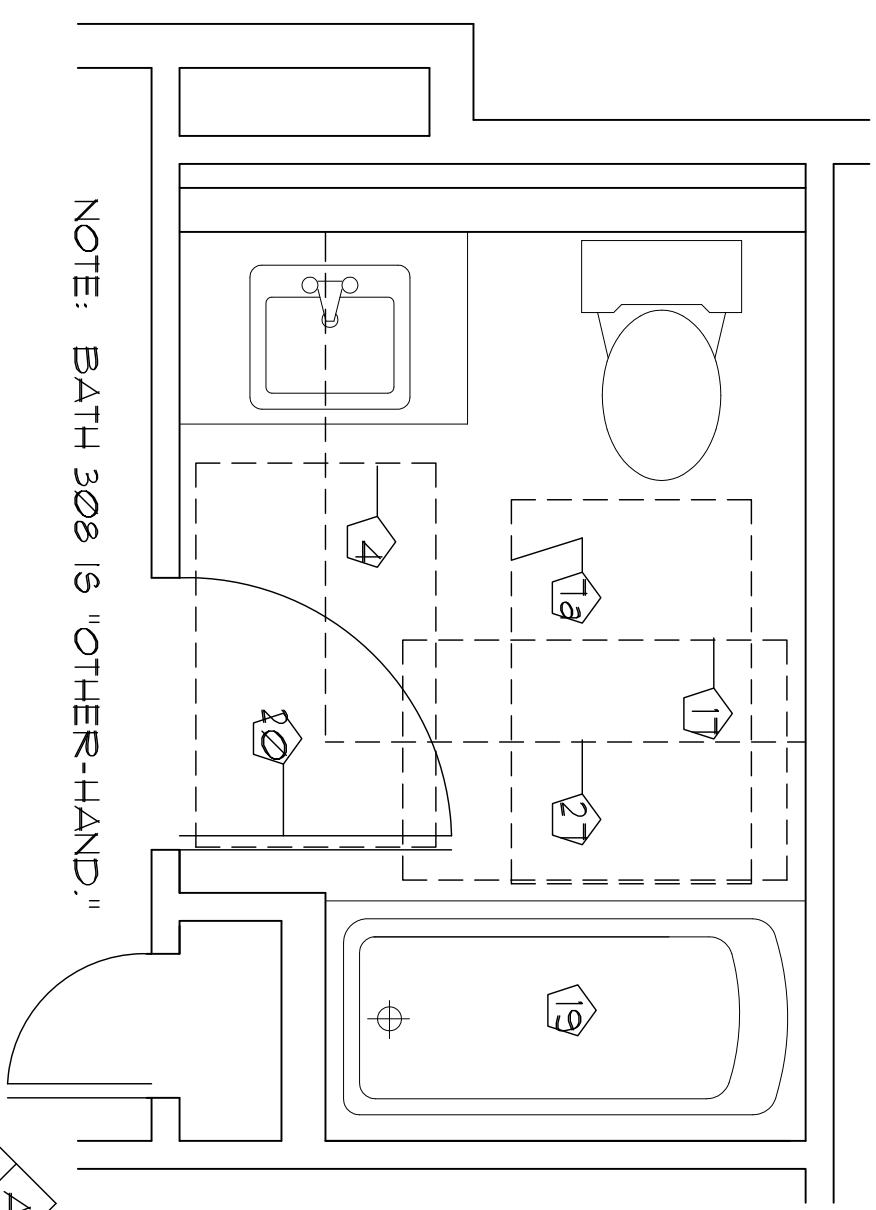
B ELEVATION  
SCALE: 1/2" = 1'



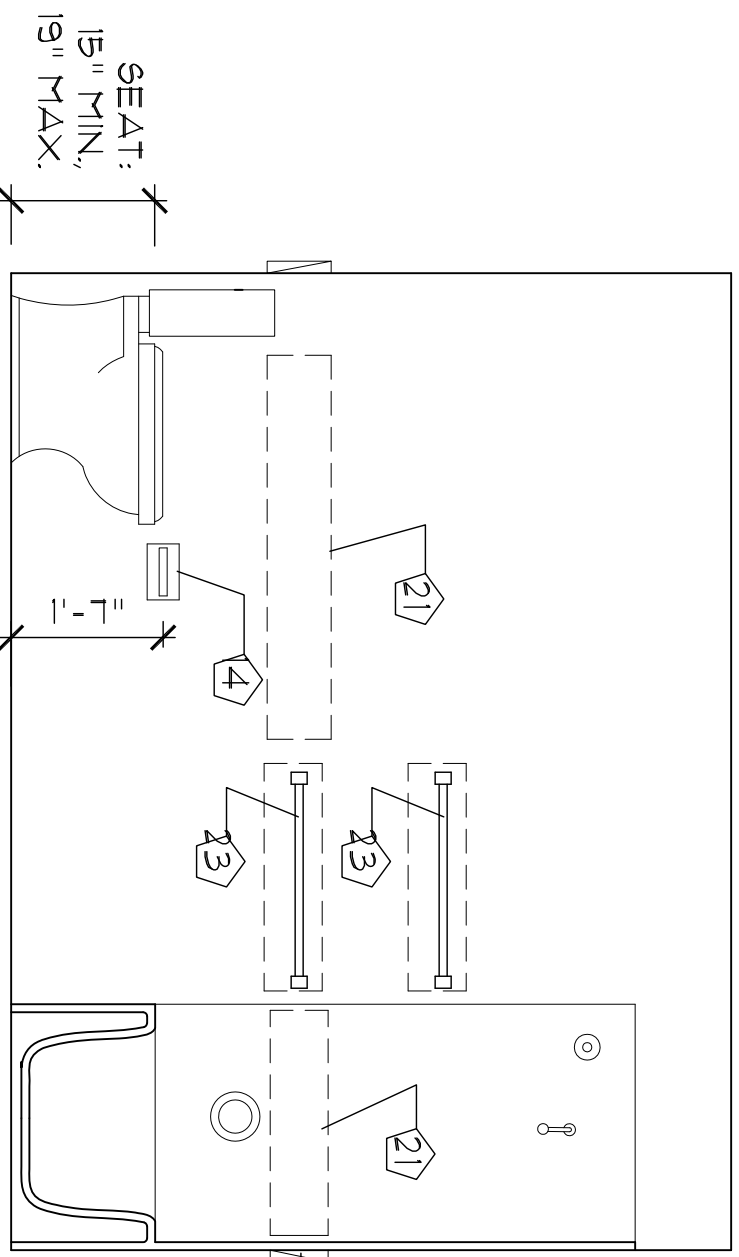
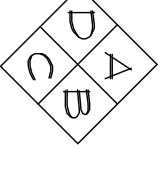
C ELEVATION  
SCALE: 1/2" = 1'



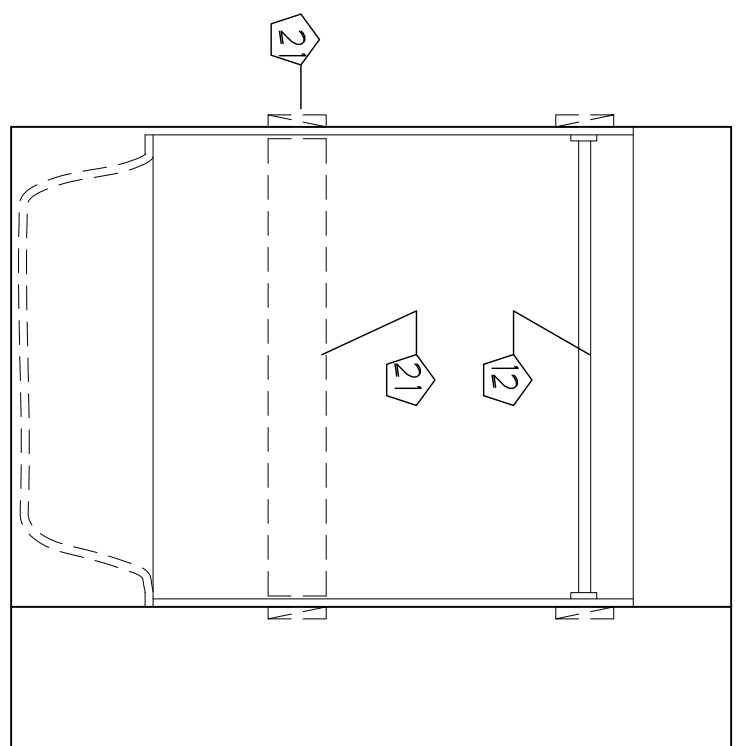
D ELEVATION  
SCALE: 1/2" = 1'



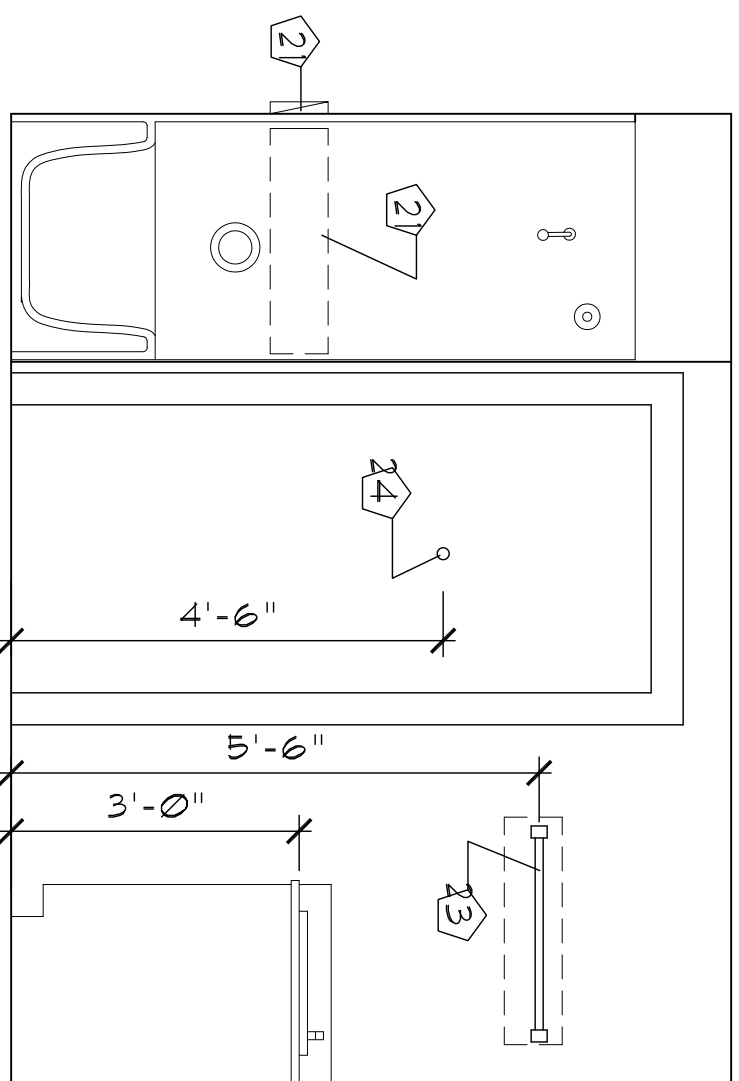
2 BATH 304 PLAN (ANSI B)  
SCALE: 1/2" = 1'



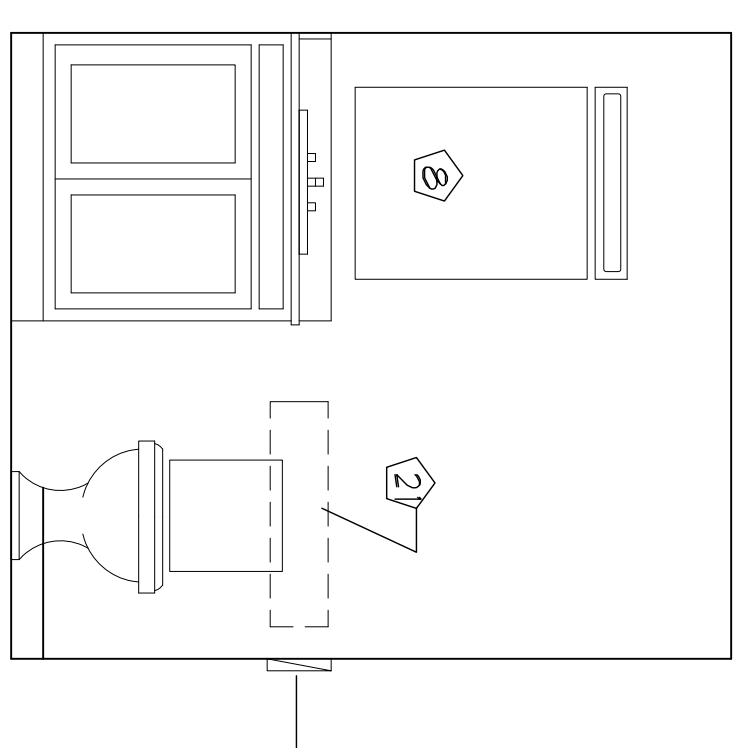
A ELEVATION  
SCALE: 1/2" = 1'



B ELEVATION  
SCALE: 1/2" = 1'

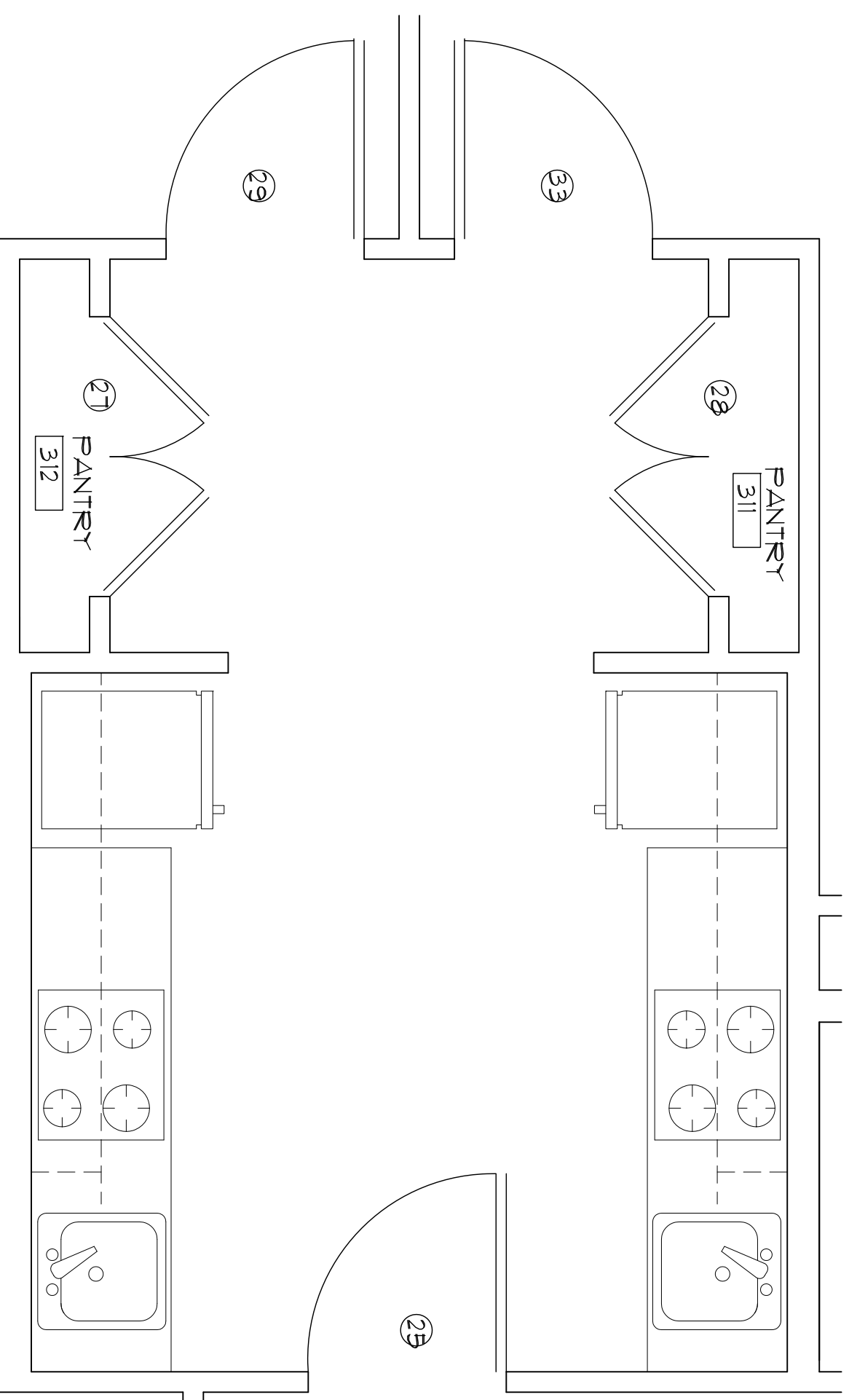


C ELEVATION  
SCALE: 1/2" = 1'

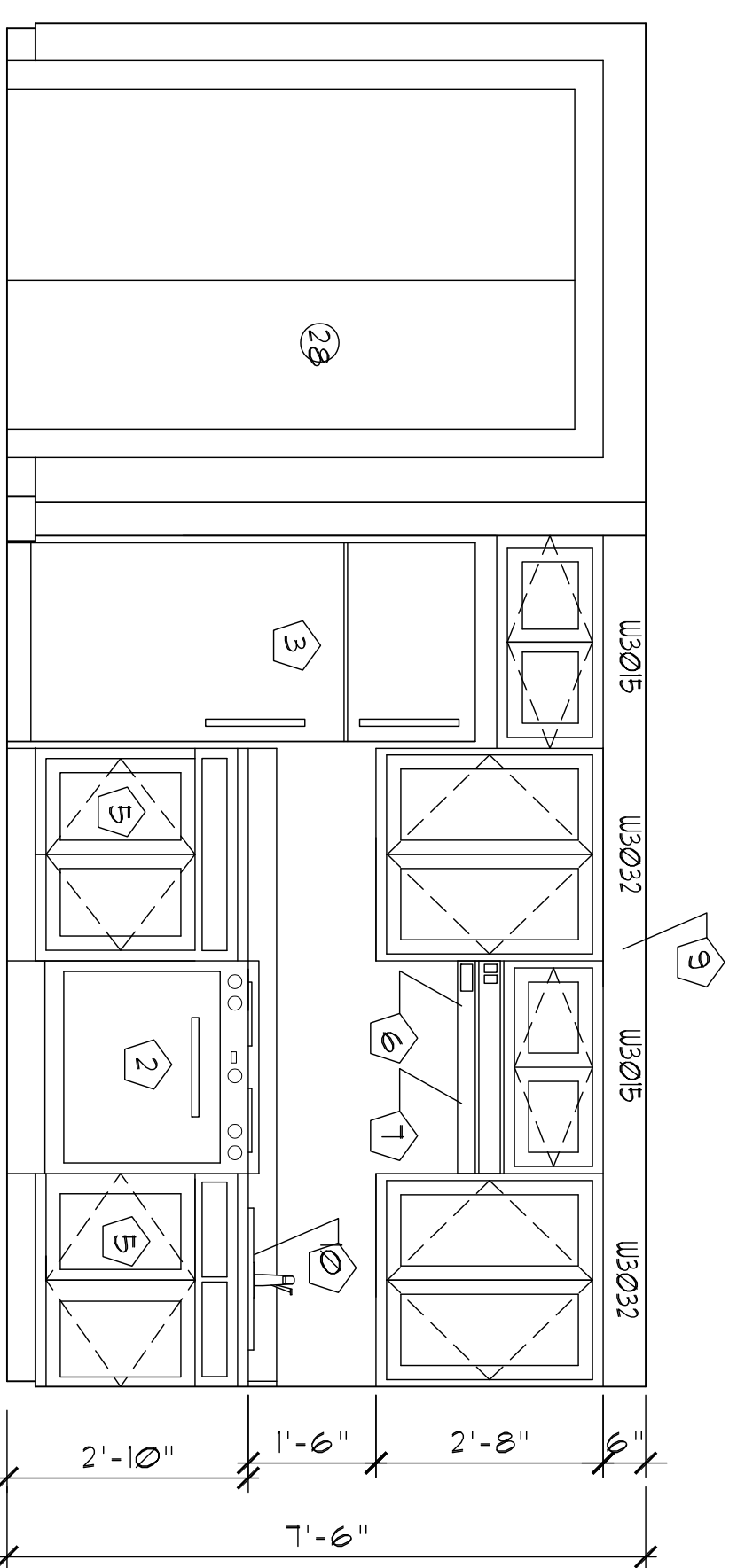
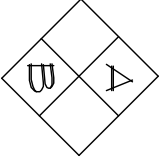


D ELEVATION  
SCALE: 1/2" = 1'

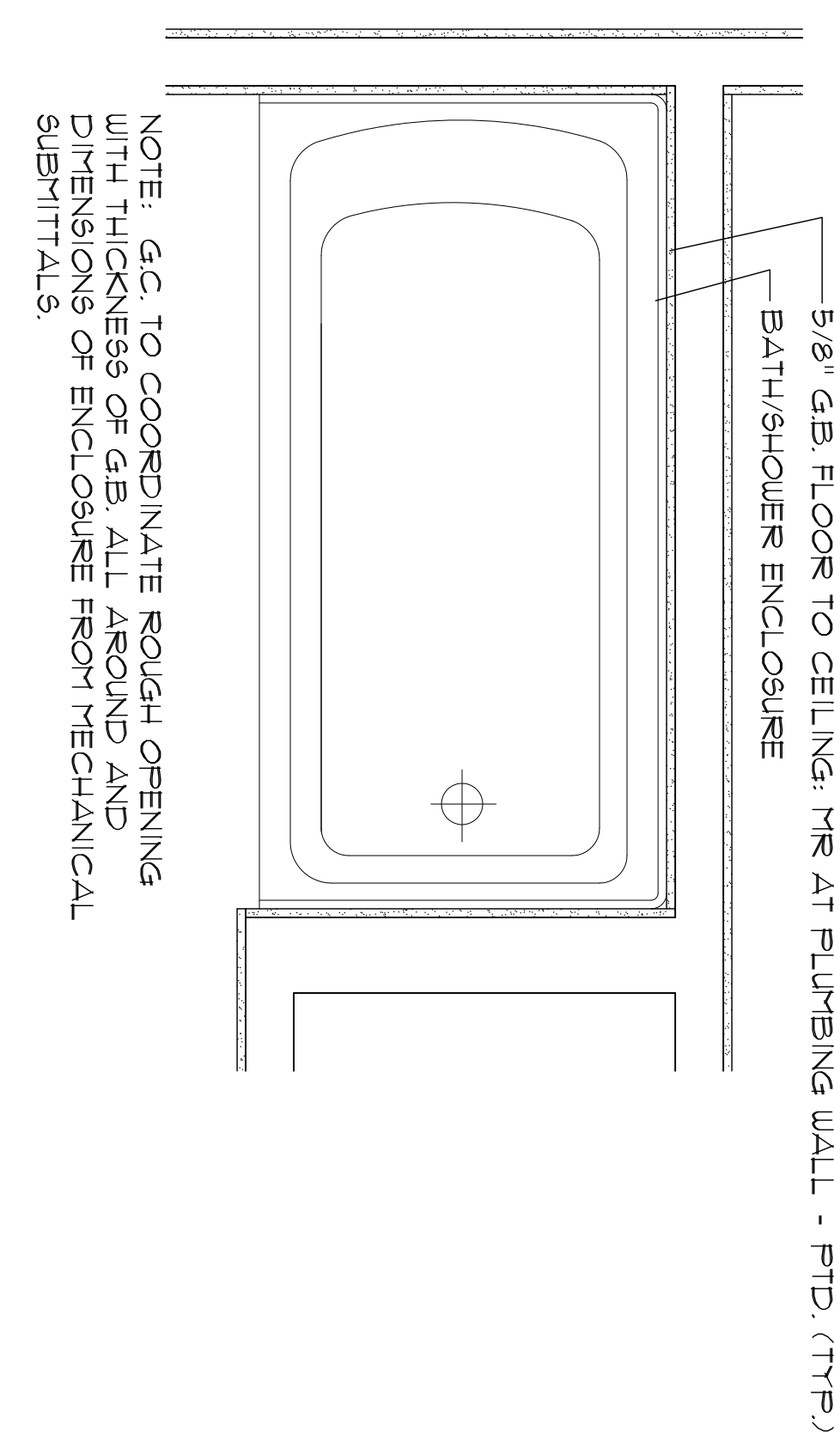
NOTE: BATH 304 IS OTHER-HAND."



3 KITCHEN 302 PLAN (ANSI B)  
SCALE: 1/2" = 1'



A ELEVATION NOTE: ELEVATION B IS THE OTHER HAND OF ELEVATION A.  
SCALE: 1/2" = 1'



4 TYPICAL BATH/SHOWER ENCLOSURE INSTALLATION  
SCALE: 1" = 1'

NOTE: GC TO COORDINATE ROUGH OPENING WITH THICKNESS OF GB. ALL AROUND AND DIMENSIONS OF ENCLOSURE FROM MECHANICAL SUBMITTALS.

**GENERAL NOTES:**

- 1. PROVIDE SOLID WOOD BLOCKING AT ALL WALL MOUNTED ITEMS.
- 2. GC TO COORDINATE SHOWER & TUB ENCLOSURE DIMENSIONS WITH FRAMING DIMENSIONS.

**KEYED NOTES:**

- 1 REFRIGERATOR BY OWNER BASED ON GE GHTUBDWW, 28"W x 31"D x 66 3/4"H. -ENERGY STAR & ADA COMPLIANT.
- 2 SLIDE-IN RANGE BY OWNER, 30"W x 28"D NOMINAL DIMENSIONS - ROUT OUT COUNTER TO RECEIVE RANGE. RUN COUNTER/BACK SPLASH CONTINUOUS BEHIND RANGE. ADA COMPLIANT, CONTROLS ON FRONT.
- 3 60" x 36" CLEAR SPACE AT TOILET.

**KEYED NOTES:**

- 4 48" x 30" CLEAR SPACE AT LAVATORY.
- 5 REMOVABLE CABINET, EXTEND FINISH FLOORING BENEATH CABINET.
- 6 HARD DUCTED ENERGY STAR RANGE HOOD.
- 7 PROVIDE A SEPARATE ACCESSIBLE WALL MOUNT SWITCH AT 44" AFF.
- 8 30" X 48" CLEAR FLOOR SPACE BEYOND ARC OF THE DOOR SWING - ALLOWING INSULING DOOR.
- 9 60" x 36" CLEAR SPACE AT TOILET.
- 10 48" x 30" CLEAR SPACE AT LAVATORY.
- 11 KITCHEN SINK - ADA COMPLIANT.
- 12 NOT USED.
- 13 PROVIDE A SEPARATE ACCESSIBLE WALL MOUNT SWITCH AT 44" AFF.
- 14 30" X 48" CLEAR FLOOR SPACE BEYOND ARC OF THE DOOR SWING - ALLOWING INSULING DOOR.
- 15 BOTTOM OF REFLECTIVE SURFACE OF MIRROR AT 3'-2" MAX.
- 16 GB. SOFFIT - PTD.
- 17 KITCHEN SINK - ADA COMPLIANT.
- 18 NOT USED.
- 19 NOT USED.
- 20 SEE 4/1/1A.
- 21 2'-0" x 6'-0" DOOR
- 22 SOLID WOOD BLOCKING FOR FUTURE GRAB BARS (TYP) NOT USED.
- 23 2'-0" TOWEL BAR
- 24 ROBE HOOK
- 25 NOT USED.
- 26 NOT USED.
- 27 CLEAR SPACE AT WATER CLOSET EXTENDING 42" ON ONE SIDE OF THE CENTERLINE OF THE WC AND 18" ON THE OTHER AND EXTENDING NOT LESS THAN 32" IN FRONT OF THE WC.
- 28 NOT USED.
- 29 60" DIA. TURNING CIRCLE

