

FINISH SCHEDULE

ROOM	WALL	FLOOR	CEILING	BASE	NOTE
STAIR 1	N/A	N/A	N/A	N/A	
STAIR 2	W1	F5	C1	B1	
STAIR 3	W1	F5	C1	B1	
PORCH 000	N/A	F6	C2/C5	N/A	
WHEELCHAIR LIFT	W1	F2	C1	N/A	
BASEMENT 001	N/A	F2	N/A	N/A	
CORRIDOR 101	W1	F4	C1	B1	
CORRIDOR 102	W1	F1	C1	B1	
LAUNDRY 103	W1	F1	C1	B1	
OFFICE 104	W1/1/2	F3	C1	B1/B2	
MED. CLOSET 105	W1/1/2	F3	C1	B1/B2	
CORRIDOR 106	W1	F3	C1	B1	
KITCHEN 101	W1/1/2	F1	C1	B1/B2	
HC BATH 108	W1/1/3	F1	C1	B2	
LIVING 109	W1/1/2	F3	C4	B1/B2	
HC BEDROOM 110	W1/1/2	F3	C1	B1/B2	
CLOSET 111	W1/1/2	F3	C1	B1/B2	
BEDROOM 112	W1/1/2	F3	C1	B1/B2	
CLOSET 113	W1/1/2	F3	C1	B1/B2	
CORRIDOR 200	W1	F1	C1	B1	
BEDROOM 201	W1/1/2	F3	C1	B1	
BEDROOM 202	W1/1/2	F3	C1	B1	
CLOSET 203	W1/1/2	F3	C1	B1	
BEDROOM 204	W1/1/2	F3	C1	B1	
CLOSET 205	W1/1/2	F3	C1	B1	
STAFF BATH 206	W1/1/2	F1	C1	B1	
BATH 201	W1/1/2	F1	C1	B1	
BEDROOM 208	W1/1/2	F3	C1	B1	
CLOSET 209	W1/1/2	F3	C1	B1	
OFFICE 210	W1/1/2	F3	C1	B1	
CLOSET 211	W1/2	F3	C1	B1	
CORRIDOR 300	W1	F1	C1	B1	
OFFICE 301	W1	F3	C1	B1	
KITCHEN 302	W1	F1	C1	B1	
BEDROOM 303	W1/1/2	F1	C4	B1	
BATH 304	W1	F1	C1	B1	
CLOSET 305	W1/2	F3	C4	B1	
CLOSET 306	W1	F3	C4	B1	
BEDROOM 301	W1/1/2	F1	C4	B1	
BATH 308	W1	F1	C1	B1	
CLOSET 309	W1/2	F3	C4	B1	
CLOSET 310	W1	F3	C4	B1	
PANTRY 311	W1	F1	C4	B1	
PANTRY 312	W1	F1	C4	B1	

FINISH SCHEDULE KEY

KEY	FLOORING	KEY	WALL	BASE	CEILING
F1	SHEET VINYL	W1	5/8" GYP BD. - PTD.	B1	5/8" GYP BD. - PTD.
F2	CONCRETE	W2	EXISTING - PTD.	B2	WOOD BASE - PTD.
F3	CARPET				EXISTING WOOD BASE - PTD.
F4	WALK-OFF MAT				PVC BEADBOARD - PTD.
F5	VINYL TREADS / RISERS / LANDINGS				NOT USED
F6	WOOD / PLASTIC COMPOSITE DECKING				EXISTING - PTD.
					VINYL PERFORATED SOFFIT - AT CANTILEVERED PORTION OF PORCH.

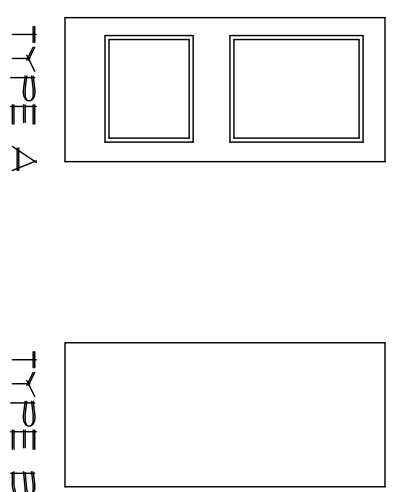
PAINTING NOTES:
 1. INTERIOR WALLS, CEILING & TRIM TO RECEIVE (1) COAT PRIMER, (2) COATS FINISH.
 2. EXTERIOR FRONT PORCH, EXTERIOR DOORS AND OTHER EXTERIOR WOOD AND METAL ITEMS TO BE PAINTED ARE TO RECEIVE (1) COAT PRIMER, (2) COATS FINISH.

DOOR SCHEDULE

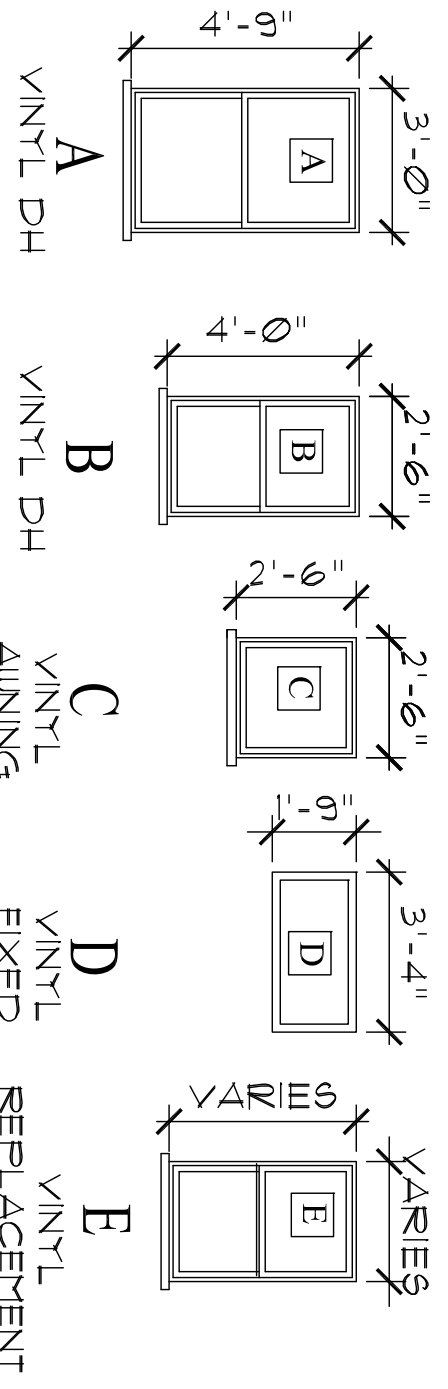
No.	SIZE		DOOR			FRAME		LABEL	HDWRE	REMARKS	No.
	Size	Thick	Type	Material	Finish	Material	Finish				
1	3'-0" X 7'-0"	-	-	-	-	-	-	-	-	Existing wood door.	1
2	3'-0" X 6'-8"	1 3/4"	A	Mtl.	Ptd.	Mtl.	Ptd.	---	-	Wheelchair Lift to Exc. - Insulated, weather-stripped. See Note 6.	2
3	3'-0" X 6'-8"	1 3/4"	A	Mtl.	Ptd.	Wood	Ptd.	---	Entrance	Exterior to Corridor 101. See Note 5.	3
4	4'-4" X 6'-0"	-	-	Mtl.	Ptd.	-	-	---	-	"Blicor" style metal basement entry.	4
5	3'-0" X 6'-8"	1 3/8"	A	SC Molded	Ptd.	Wood	Ptd.	45 Min.	Entrance	From Corr. 101 to Corridor 102.	5
6	3'-0" X 3'-6"	-	-	-	-	-	-	-	-	Wheelchair Lift metal gate.	6
7	(2) 3'-6" X 6'-8"	1 3/8"	A	HC Molded	Ptd.	-	-	-	-	Bi-fold - Corr. 102 to Laundry 103.	7
8	3'-0" X 6'-8"	1 3/8"	A	SC Molded	Ptd.	Wood	Ptd.	-	Entrance	Corr. 102 to Office 104.	8
8a	2'-0" X 6'-8"	1 3/8"	A	SC Molded	Ptd.	Wood	Ptd.	-	Entrance	Office 104 to Med. Closet 105.	8a
9	3'-0" X 6'-8"	1 3/8"	A	SC Molded	Ptd.	Wood	Ptd.	-	Privacy	Corr. 102 to HC Bathroom 108.	9
10	3'-0" X 6'-8"	1 3/8"	A	SC Molded	Ptd.	Wood	Ptd.	20 Min.	Entrance	Corridor 106 to HC Bedroom 110.	10
11	3'-0" X 6'-8"	1 3/8"	A	SC Molded	Ptd.	Wood	Ptd.	20 Min.	Entrance	Corridor 106 to Bedroom 112.	11
12	(2) 1'-6" X 6'-8"	1 3/8"	A	HC Molded	Ptd.	-	-	---	Passage	Bedroom 112 to Closet 113.	12
13	(2) 1'-6" X 6'-8"	1 3/8"	A	HC Molded	Ptd.	-	-	---	Passage	HC Bedroom 110 to Closet 111.	13
14	2'-10" X 6'-8"	1 3/8"	A	SC Molded	Ptd.	Wood	Ptd.	-	Entrance	Corr. 200 to Office 210.	14
15	3'-0" X 6'-8"	1 3/8"	A	SC Molded	Ptd.	Wood	Ptd.	-	Privacy	Corridor 200 to Staff Bath 206.	15
16	2'-10" X 6'-8"	1 3/8"	A	SC Molded	Ptd.	Wood	Ptd.	---	Privacy	Corridor 200 to Staff Bath 207.	16
17	2'-10" X 6'-8"	1 3/8"	A	SC Molded	Ptd.	Wood	Ptd.	20 Min.	Entrance	Corridor 200 to Bedroom 208.	17
18	(2) 2'-6" X 6'-8"	1 3/8"	A	HC Molded	Ptd.	-	-	---	Passage	Bedroom 208 to Closet 209.	18
19	2'-10" X 6'-8"	1 3/8"	A	SC Molded	Ptd.	Wood	Ptd.	20 Min.	Entrance	Corridor 200 to Bedroom 201.	19
20	(2) 1'-9" X 6'-8"	1 3/8"	A	HC Molded	Ptd.	-	-	---	Passage	Bedroom 201 to Closet 211.	20
21	2'-10" X 6'-8"	1 3/8"	A	SC Molded	Ptd.	Wood	Ptd.	20 Min.	Entrance	Corridor 200 to Bedroom 202.	21
22	(2) 2'-6" X 6'-8"	1 3/8"	A	HC Molded	Ptd.	-	-	---	Passage	Bedroom 202 to Closet 203.	22
23	2'-10" X 6'-8"	1 3/8"	A	SC Molded	Ptd.	Wood	Ptd.	20 Min.	Entrance	Corridor 200 to Bedroom 204.	23
24	(2) 2'-6" X 6'-8"	1 3/8"	A	HC Molded	Ptd.	-	-	---	Passage	Bedroom 204 to Closet 205.	24
25	3'-0" X 6'-8"	1 3/8"	A	SC Molded	Ptd.	Wood	Ptd.	45 Min.	Entrance	Corr. 300 to Kitchen 302.	25
26	3'-0" X 6'-8"	1 3/8"	A	SC Molded	Ptd.	Wood	Ptd.	45 Min.	Entrance	Corridor 300 to Office 301.	26
27	(2) 2'-6" X 6'-8"	1 3/8"	A	HC Molded	Ptd.	-	-	---	Passage	Kitchen 302 to Pantry 312.	27
28	(2) 2'-6" X 6'-8"	1 3/8"	A	HC Molded	Ptd.	-	-	---	Passage	Kitchen 302 to Bedroom 307.	28
29	2'-10" X 6'-8"	1 3/8"	A	SC Molded	Ptd.	Wood	Ptd.	---	Entrance	Kitchen 307 to Bedroom 307.	29
30	1'-6" X 6'-8"	1 3/8"	A	HC Molded	Ptd.	Wood	Ptd.	---	Passage	Bedroom 307 to Closet 310.	30
31	2'-10" X 6'-8"	1 3/8"	A	SC Molded	Ptd.	Wood	Ptd.	---	Privacy	Bedroom 307 to Bath 308.	31
32	(2) 2'-6" X 6'-8"	1 3/8"	A	HC Molded	Ptd.	-	-	---	Passage	Bedroom 307 to Closet 309.	32
33	2'-10" X 6'-8"	1 3/8"	A	SC Molded	Ptd.	Wood	Ptd.	---	Entrance	Kitchen 302 to Bedroom 303.	33
34	1'-6" X 6'-8"	1 3/8"	A	HC Molded	Ptd.	Wood	Ptd.	---	Passage	Bedroom 303 to Closet 306.	34
35	2'-10" X 6'-8"	1 3/8"	A	SC Molded	Ptd.	Wood	Ptd.	---	Privacy	Bedroom 303 to Bath 304.	35
36	(2) 2'-6" X 6'-8"	1 3/8"	A	HC Molded	Ptd.	-	-	---	Passage	Bedroom 303 to Closet 305.	36
37	3'-0" X 6'-8"	1 3/8"	B	Wood	Ptd.	Wood	-	---	Latch	Basement to Exterior - custom wood door.	37

DOOR NOTES
 1. NOT USED
 2. ALL HARDWARE TO INCLUDE LEVER HANDLES.
 3. ALL RATED DOORS TO BE SELF CLOSING.
 4. SEE SECTION 06200 FOR ADD'L INFO.
 5. PROVIDE AUTO DOOR OPENER - PADDLE OPERATORS EA. SIDE OF DOOR.
 6. PROVIDE AUTO DOOR OPENER - COORDINATE WITH WHEELCHAIR LIFT SUBCONTRACTOR.

DOOR TYPES



WINDOW TYPES

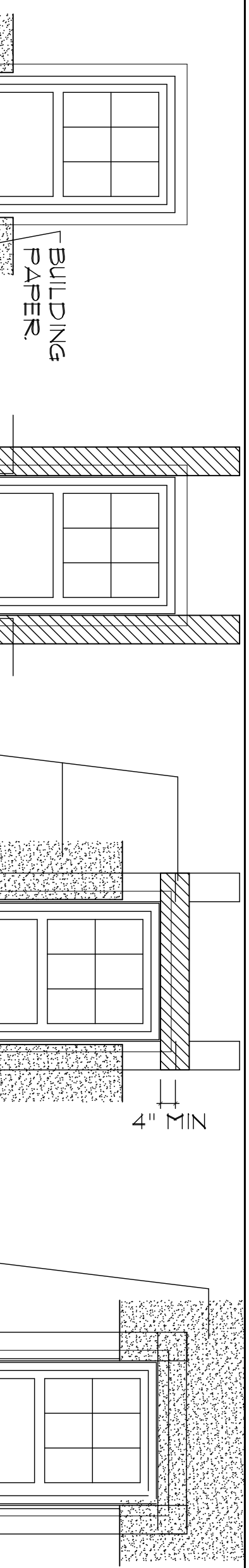


WINDOW NOTES:

- EGRESS WINDOWS ARE INDICATED ON EXTERIOR ELEVATION DRAWING A-4.
- FIELD VERIFY ALL DIMENSIONS.
- WITH DOOR HEAD.
- TYPE C - HEAD AT 6'-8" AFF.

WINDOW DETAIL

ORDER OF INSTALLATION OF WATER PROOFING AT WINDOWS



GENERAL NOTE:
 "VYCOR" COVERING AT ALL NAILING FLANGES. "VYCOR" AT HEAD LAPPED OVER "VYCOR" AT JAMBES, LAPPED OVER "VYCOR" AT SILL.
 1. 12" VYCOR ON TOP OF 15" FELT BUILDING PAPER
 2. 12" VYCOR EA. SIDE (LAPPED 4" MIN.)
 3. SECOND LAYER OF BUILDING FELT ON TOP. 12" "VYCOR" AT HEAD LAPPED OVER "VYCOR" AT HEAD LAPPED OVER "VYCOR" AT
 4. 15" FELT BUILDING PAPER ON TOP.

Drawing

SCHEDULES

A-6

Date 4/8/13

Project:

ADDITION & RENOVATIONS

503 WOODFORD STREET
 PORTLAND, MAINE

Scale As Noted

Architect

SHIELDS ARCHITECTURE

216 Range Road, Cumberland, Maine
 (207) 776-8926

