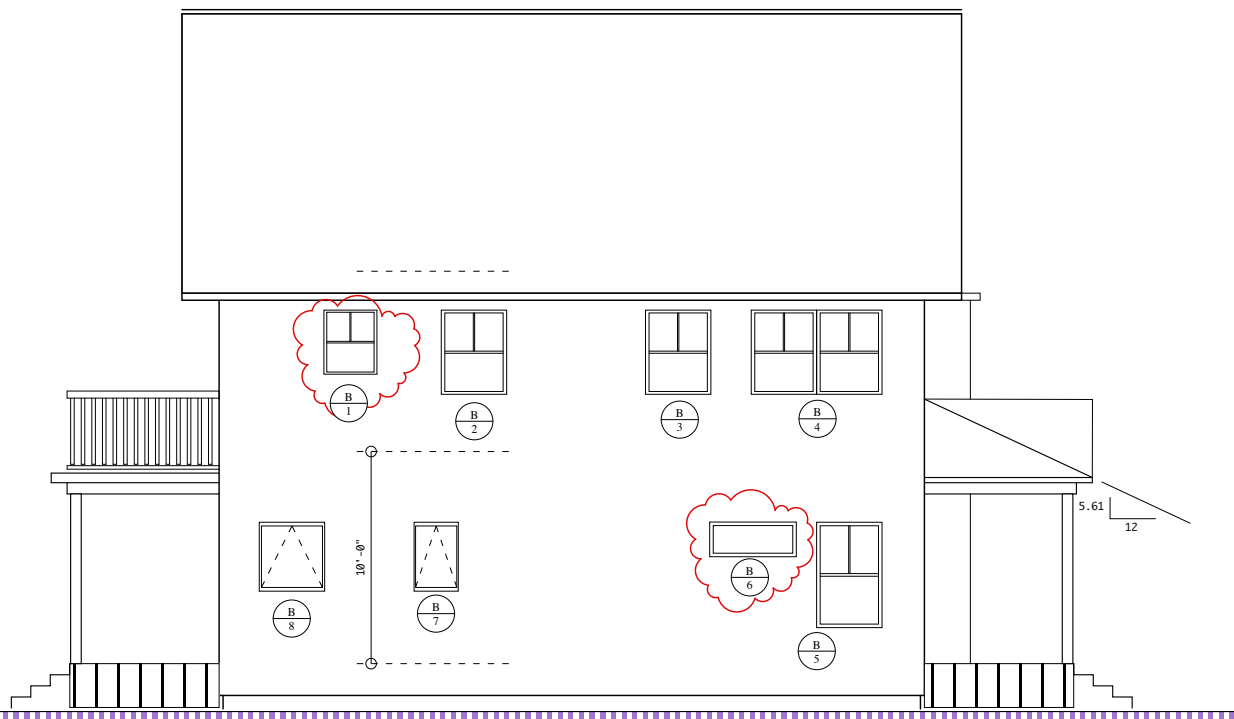


**A** BACKYARD ELEVATION WEST



**B** SIDEYARD ELEVATION SOUTH



**C** COLUMBIA STREET ELEVATION EAST



**D** COLUMBIA TERRACE ELEVATION NORTH

WINDOW SCHEDULE (MARVIN INTEGRITY WOOD-ULTRIX SERIES)

W	X	H
A1	DOUBLE HUNG 4'4" X 4'8 1/4"	ITDH 2656 SW
A2	DOUBLE HUNG 6'2" X 4'4"	ITDH 3652 SW
A3	ANNING 3'6 1/2" X 2'3 5/8"	IANN 2527 ZW
A4	DOUBLE HUNG 3'0 1/2" X 3'0 1/4"	ITDH 4236 (TEMPERED GLASS)
A5	ANNING 6'1" X 3'3 5/8"	IANN 3729 ZW
A6	DOUBLE HUNG 3'0 1/2" X 5'0 1/4"	ITDH 3660 E
A7	DOUBLE HUNG 6'0" X 5'0 1/4"	ITDH 3660 ZWE

B1	DOUBLE HUNG 2'6 1/2" X 3'0 1/4"	ITDH 3836
B2	DOUBLE HUNG 3'0 1/2" X 4'0 1/4"	ITDH 3648
B3	DOUBLE HUNG 3'0 1/2" X 4'0 1/4"	ITDH 3648
B4	DOUBLE HUNG 6'0" X 4'0 1/4"	ITDH 3648 ZW
B5	DOUBLE HUNG 3'0 1/2" X 5'0 1/4"	ITDH 3660 E
B6	TRANSOM 4'1" X 1'7 5/8"	ICAP 4919
B7	ANNING 2'11" X 3'3 5/8"	IANN 2539
B8	ANNING 3'1" X 3'3 5/8"	IANN 3739

C1	DOUBLE HUNG 4'4" X 4'8 1/4"	ITDH 2656 ZW
C2	DOUBLE HUNG 6'0" X 4'0 1/4"	ITDH 3648 ZW
C3	DOUBLE HUNG 2'8 1/2" X 4'0 1/4"	ITDH 3248
C4	DOUBLE HUNG 3'0 1/2" X 5'0 1/4"	ITDH 3660 E
C5	DOUBLE HUNG 2'8 1/2" X 4'0 1/4"	ITDH 3248
C6	DOUBLE HUNG 2'8 1/2" X 5'0 1/4"	ITDH 3260
C7	DOUBLE HUNG 3'0 1/2" X 5'0 1/4"	ITDH 3660 E
C8	DOUBLE HUNG 2'8 1/2" X 5'0 1/4"	ITDH 3260
C9	DOUBLE HUNG 6'0" X 5'0 1/4"	ITDH 3660 ZWE

1. PROVIDE SCREENS OR ALL WINDOWS.
2. COLOR, HARDWARE FINISH, DIVIDED LITES AND EXTERIOR TRIM BY CONTRACTOR AND OWNER.
3. INSULATING GLASS ARGON LOE-180. VERIFY THERMAL PERFORMANCE U-FACTOR 0.31 DOUBLE HUNG, 0.30 ANNING

EXTERIOR DOOR SCHEDULE (MARVIN INTEGRITY WOOD-ULTRIX SERIES)

1	2'3'0" X 6'8"	IIFD 3065 X-L REAR ENTRY
2	3'2'6" X 6'8"	IIFD 2665 X-R 2ND FLOOR DECK

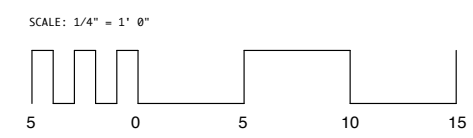
1. PROVIDE SCREEN DOORS.
2. COLOR, HARDWARE FINISH, DIVIDED LITES AND EXTERIOR TRIM BY CONTRACTOR AND OWNER.
3. INSULATING GLASS ARGON LOE-272. VERIFY THERMAL PERFORMANCE U-FACTOR 0.30

NOTES:  
1. WHERE PORCH LEVEL IS OVER 30" PROVIDE GUARD RAILS AS PER CODE.



38 Columbia Road  
Portland  
ELEVATIONS

Architect:  
James Sterling, AIA  
Architect  
142 High Street  
Portland, Maine



**A-2.0**  
20 June 2014  
rev: 07 July