

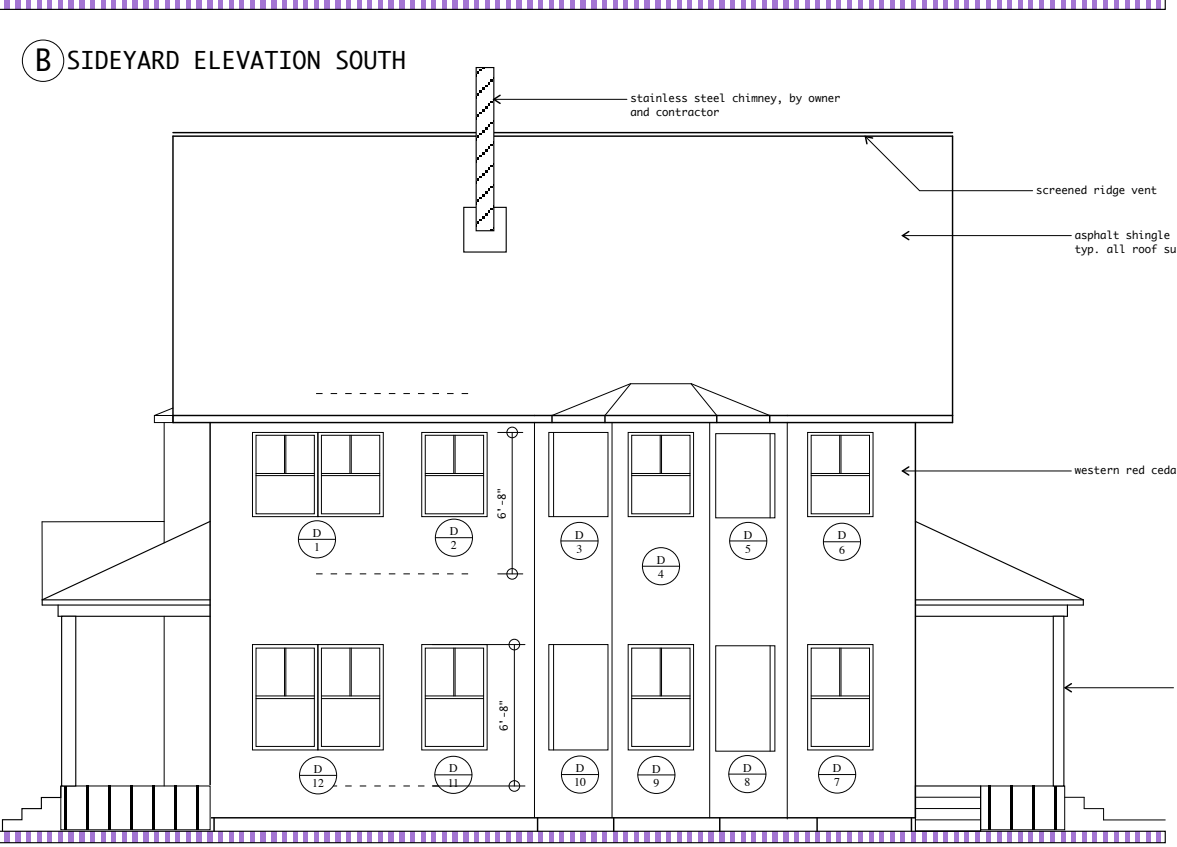
WINDOW SCHEDULE (MARVIN INTEGRITY WOOD-ULTRIX SERIES)

W	X	H
A1	DOUBLE HUNG 4'4" X 4'8 1/4"	ITDH 2656 SW
A2	DOUBLE HUNG 6'2" X 4'4"	ITDH 3652 SW
A3	ANNING 4'1" X 2'3 5/8"	IAWN 2527 ZW
A4	ANNING 4'1" X 2'11 5/8"	IAWN 2527 (TEMPERED GLASS)
A5	ANNING 6'1" X 3'3 5/8"	IAWN 3729 ZW
A6	DOUBLE HUNG 3'0 1/2" X 5'0 1/4"	ITDH 3660 E
A7	DOUBLE HUNG 6'0" X 5'0 1/4"	ITDH 3660 ZWE
B1	ANNING 2'5" X 2'3 5/8"	IAWN 2927
B2	DOUBLE HUNG 3'0 1/2" X 4'0 1/4"	ITDH 3648
B3	DOUBLE HUNG 3'0 1/2" X 4'0 1/4"	ITDH 3648
B4	DOUBLE HUNG 6'0" X 4'0 1/4"	ITDH 3648 ZW
B5	DOUBLE HUNG 3'0 1/2" X 5'0 1/4"	ITDH 3660 E
B6	STAINED GLASS BY OWNER	
B7	ANNING 2'11" X 3'3 5/8"	IAWN 2539
B8	ANNING 3'1" X 3'3 5/8"	IAWN 3739
C1	DOUBLE HUNG 4'4" X 4'8 1/4"	ITDH 2656 ZW
C2	DOUBLE HUNG 6'0" X 4'0 1/4"	ITDH 3648 ZW
C3	DOUBLE HUNG 2'8 1/2" X 4'0 1/4"	ITDH 3248
C4	DOUBLE HUNG 3'0 1/2" X 5'0 1/4"	ITDH 3660 E
C5	DOUBLE HUNG 2'8 1/2" X 4'0 1/4"	ITDH 3248
C6	DOUBLE HUNG 2'8 1/2" X 5'0 1/4"	ITDH 3260
C7	DOUBLE HUNG 3'0 1/2" X 5'0 1/4"	ITDH 3660 E
C8	DOUBLE HUNG 2'8 1/2" X 5'0 1/4"	ITDH 3260
C9	DOUBLE HUNG 6'0" X 5'0 1/4"	ITDH 3660 ZWE
D1	DOUBLE HUNG 6'0" X 4'0 1/4"	ITDH 3648 ZW
D2	DOUBLE HUNG 3'0 1/2" X 4'0 1/4"	ITDH 3648
D3	DOUBLE HUNG 3'0 1/2" X 4'0 1/4"	ITDH 3648
D4	DOUBLE HUNG 3'0 1/2" X 4'0 1/4"	ITDH 3648
D5	DOUBLE HUNG 3'0 1/2" X 4'0 1/4"	ITDH 3648
D6	DOUBLE HUNG 3'0 1/2" X 4'0 1/4"	ITDH 3648
D7	DOUBLE HUNG 3'0 1/2" X 5'0 1/4"	ITDH 3660 E
D8	DOUBLE HUNG 3'0 1/2" X 5'0 1/4"	ITDH 3660 E
D9	DOUBLE HUNG 3'0 1/2" X 5'0 1/4"	ITDH 3660 E
D10	DOUBLE HUNG 3'0 1/2" X 5'0 1/4"	ITDH 3660 E
D11	DOUBLE HUNG 3'0 1/2" X 5'0 1/4"	ITDH 3660 E
D12	DOUBLE HUNG 6'0" X 5'0 1/4"	ITDH 3660 ZWE

1. PROVIDE SCREENS OR ALL WINDOWS.
 2. COLOR, HARDWARE FINISH, DIVIDED LITES AND EXTERIOR TRIM BY CONTRACTOR AND OWNER.
 3. INSULATING GLASS ARGON LOE-180. VERIFY THERMAL PERFORMANCE U-FACTOR 0.31 DOUBLE HUNG, 0.30 ANNING

A BACKYARD ELEVATION WEST

B SIDEYARD ELEVATION SOUTH



EXTERIOR DOOR SCHEDULE (MARVIN INTEGRITY WOOD-ULTRIX SERIES)

1	3'0" X 6'8" (OR 8'0")	IIFD 3065 X-L COLUMBIA ST ENTRY
2	3'0" X 6'8" (OR 8'0")	IIFD 3065 X-L REAR ENTRY
3	2'6" X 6'8"	IIFD 2665 X-R 2ND FLOOR DECK

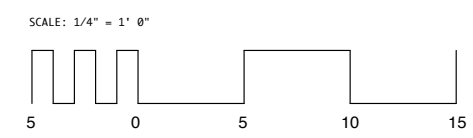
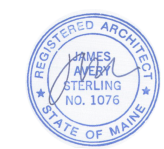
1. PROVIDE SCREEN DOORS.
 2. COLOR, HARDWARE FINISH, DIVIDED LITES AND EXTERIOR TRIM BY CONTRACTOR AND OWNER.
 3. INSULATING GLASS ARGON LOE-272. VERIFY THERMAL PERFORMANCE U-FACTOR 0.30

C COLUMBIA STREET ELEVATION EAST

D COLUMBIA TERRACE ELEVATION NORTH

38 Columbia Road
 Portland
 ELEVATIONS

Architect:
 James Sterling, AIA
 Architect
 142 High Street
 Portland, Maine



A-2.0
 20 June 2014