

36 Westminster Ave
Portland Building

ENTRANCE

4x4
3 steps

P.F.
2x6
Joyce

Composite
Decking
3' High

SUPPORT
Post 4x4

4 FT
SPACER
TUB



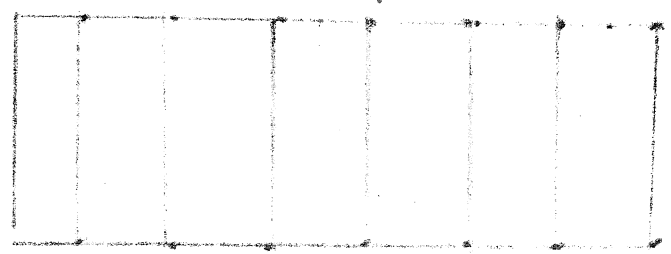
Treads
↑
RISER

Treads
↑

Treads

Walkway

Rail system
Bannisters 4" apart



Step
stringers
16" apart

For: 36 Westminister Ave.