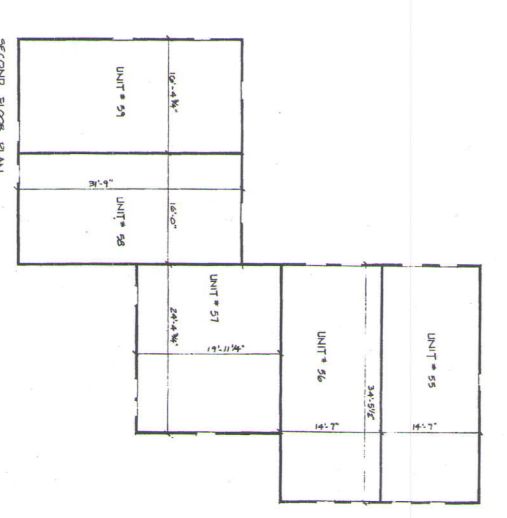
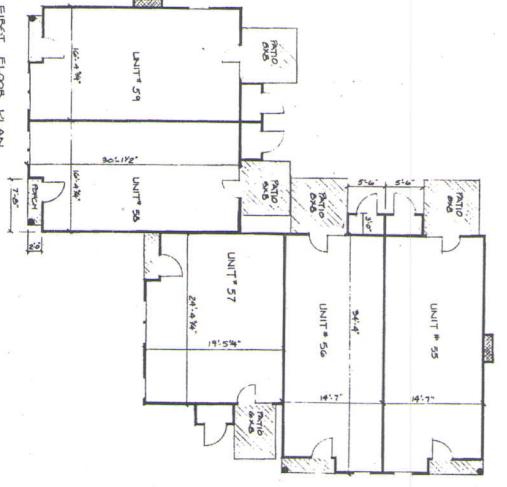
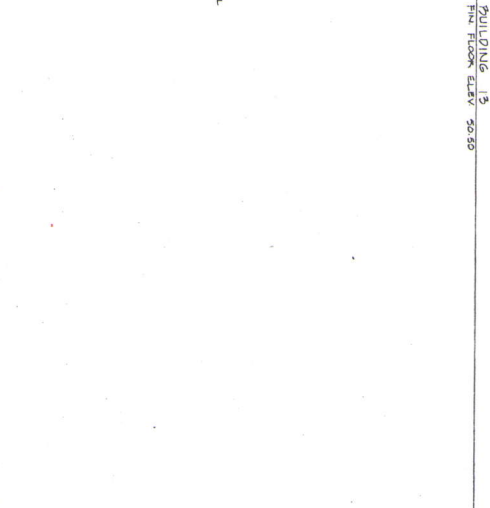
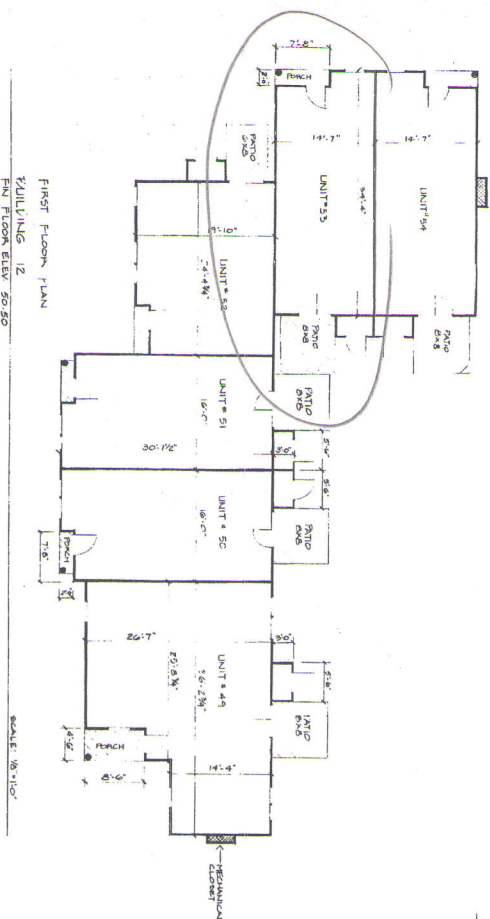


SECOND FLOOR PLAN  
FIRST FLOOR PLAN  
BUILDING 12  
FIN FLOOR ELEV. 50.20  
SCALE: 3/8"=1'-0"



FIRST FLOOR PLAN  
BUILDING 13  
FIN FLOOR ELEV. 50.35  
SCALE: 3/8"=1'-0"

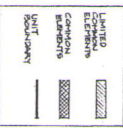


FIRST FLOOR PLAN  
BUILDING 12  
FIN FLOOR ELEV. 50.20  
SCALE: 3/8"=1'-0"

NOTES

1. ALL DIMENSIONS ARE FROM EXTERIOR FACE OF WALLS UNLESS OTHERWISE NOTED.
2. REFER TO PART PLAN FOR LOCATION OF BUILDINGS.
3. DIMENSIONS TO INTERIOR FACE UNLESS OTHERWISE NOTED.

KEY



AREA OF UNITS INCLUDES STORAGE

50	1004	46	950	54	1004
51	1110	47	918	55	1004
52	1105	46	1002	56	1105
53	1105	46	1002	57	1105
54	1004	50	987	58	1004
55	1004	51	986	59	1002
56	1004	52	950		
57	1004	53	950		

Third Amendment to floor plans of  
GLENRIDGE CONDOMINIUM  
BY: THE DARTMOUTH COMPANY  
APRIL 15, 1987

UNITS 30-59  
DATE 4-1-87  
DRAWN A8



State of Maine, Combined as  
Engineer, License No. 10001  
11-12-87  
3-1-3