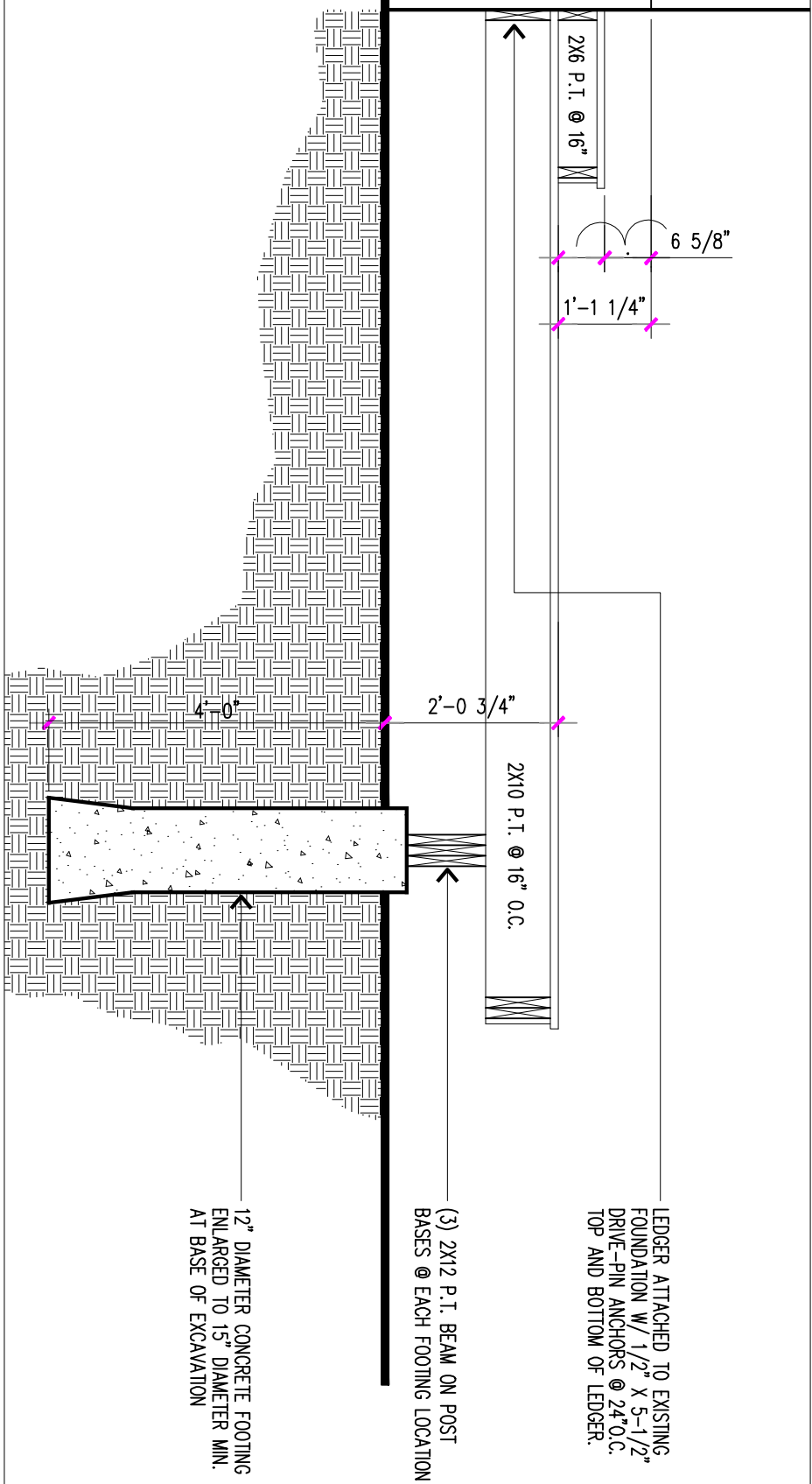


F.F. HOUSE



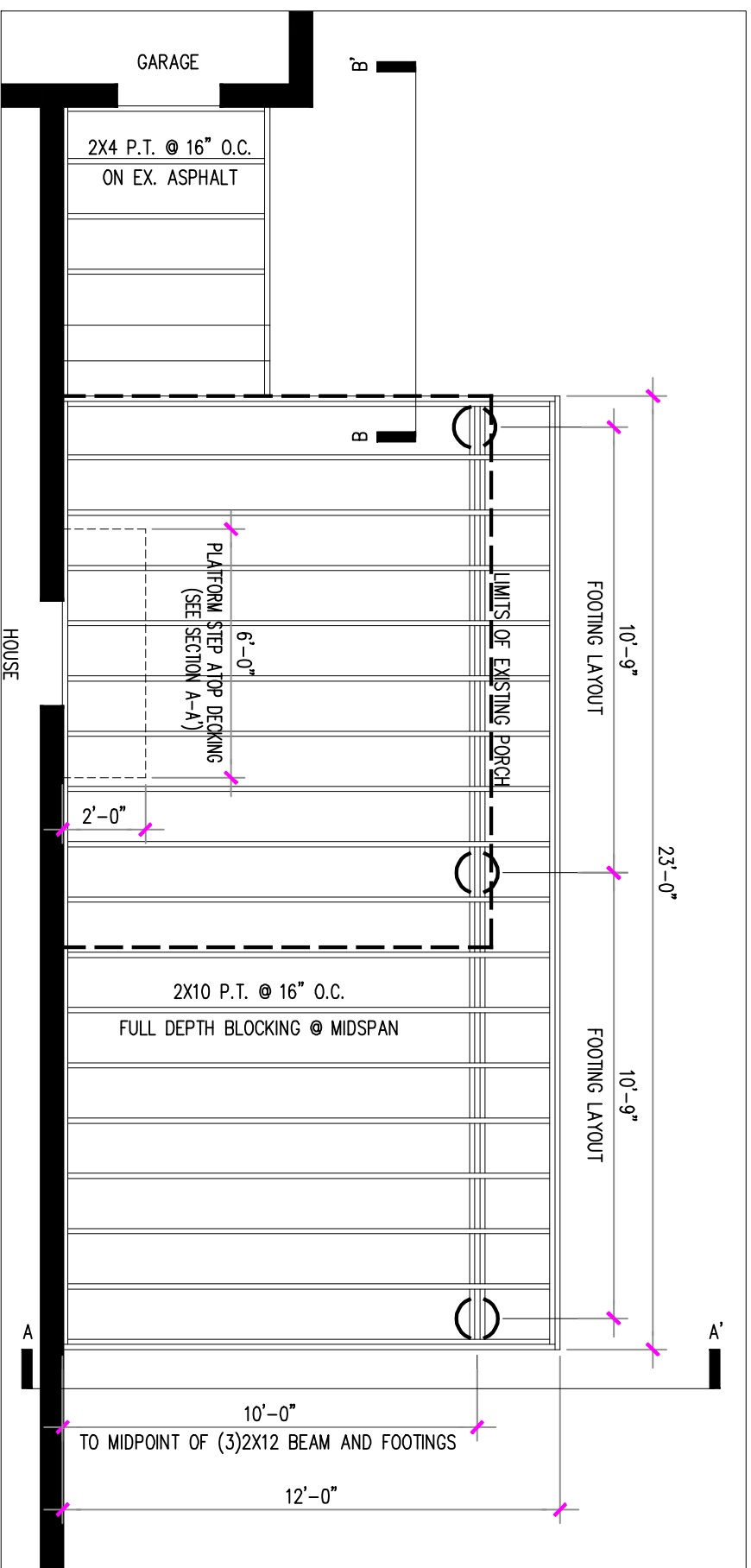
LEDGER ATTACHED TO EXISTING FOUNDATION W/ 1/2" X 5-1/2" DRIVE-PIN ANCHORS @ 24" O.C. TOP AND BOTTOM OF LEDGER.

(3) 2X12 P.T. BEAM ON POST BASES @ EACH FOOTING LOCATION

12" DIAMETER CONCRETE FOOTING ENLARGED TO 15" DIAMETER MIN. AT BASE OF EXCAVATION

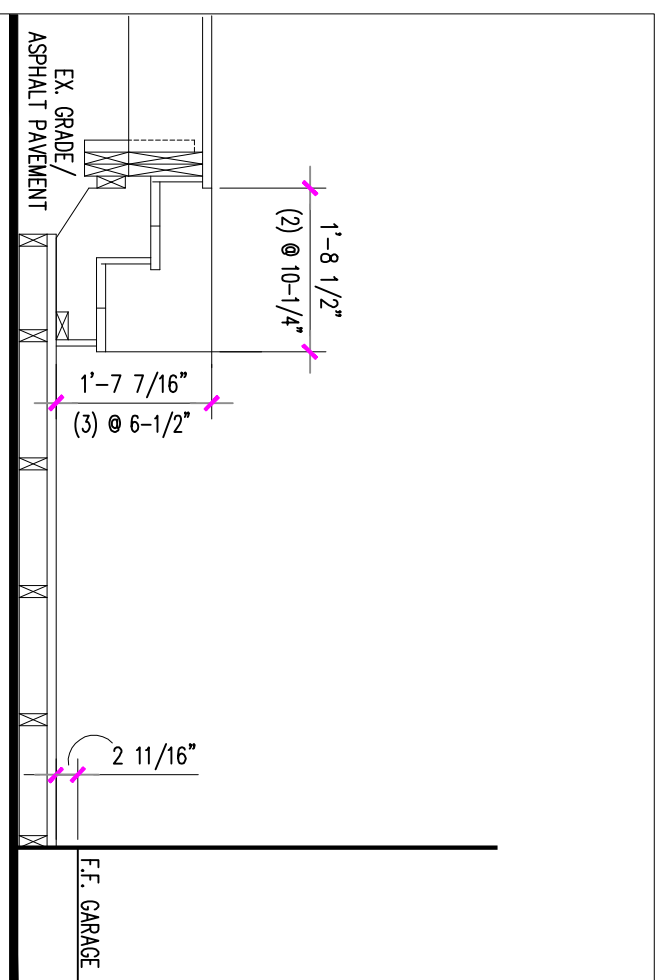
SECTION A-A'

SCALE: 1/2" = 1'-0"



FRAMING PLAN

SCALE: 1/4" = 1'-0"



SECTION B-B'

SCALE: 1/2" = 1'-0"