

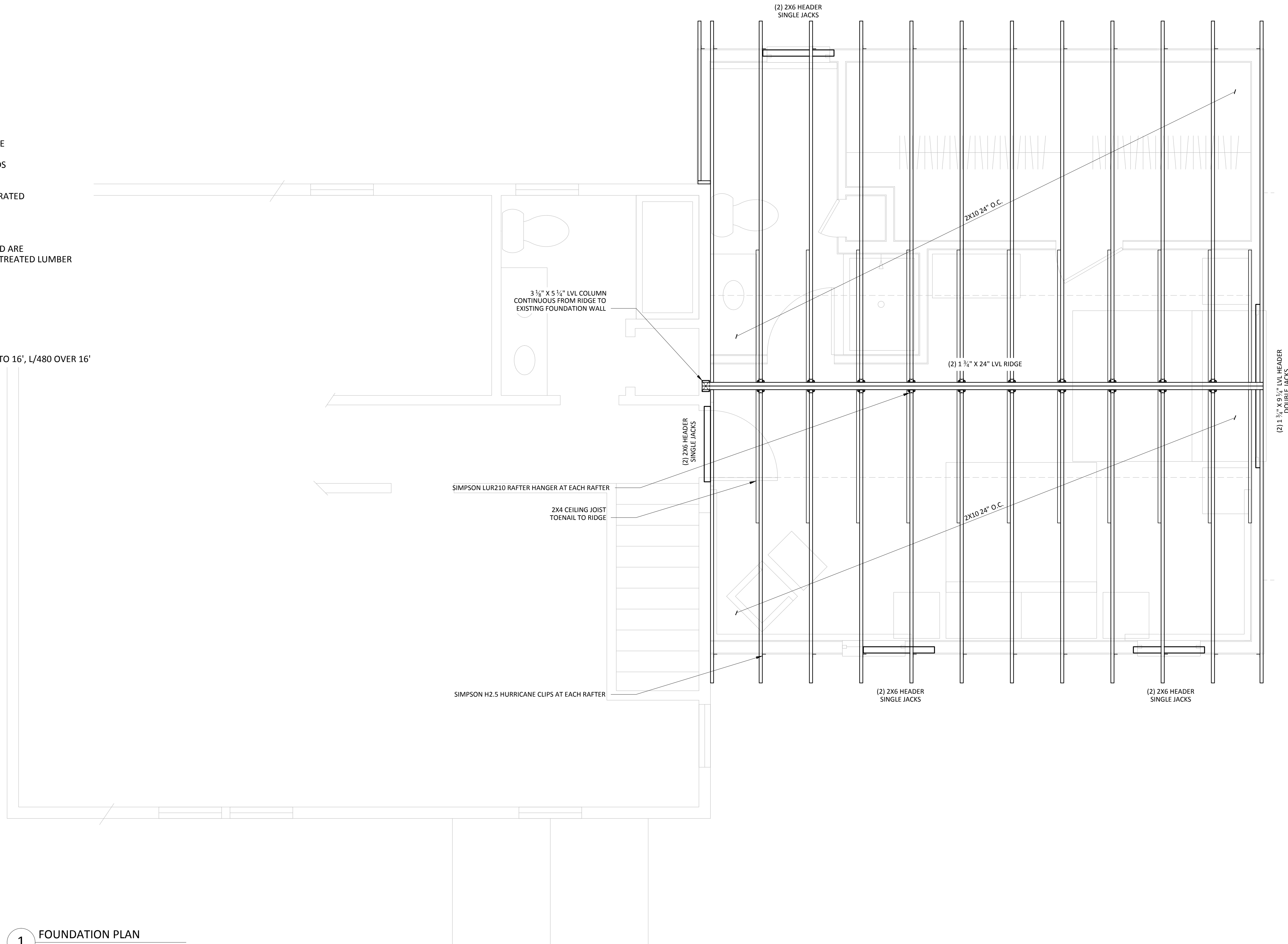
FRAMING SPECIFICATIONS

EXTERIOR FRAMING LUMBER:
 PRESSURE TREATED SOUTHERN YELLOW PINE
 TREATED FOR USE IN GROUND CONTACT
 IN ACCORDANCE WITH AWPA U1 STANDARDS

EXTERIOR HARDWARE:
 STAINLESS STEEL OR HOT DIP GALVANIZED, RATED
 FOR USE WITH PRESSURE TREATED LUMBER

INTERIOR FRAMING LUMBER:
 SPF #2 + BETTER
 WHERE SILL PLATES BEAR ON CONCRETE AND ARE
 CLOSER THAN 8" TO GRADE, USE PRESSURE TREATED LUMBER

ENGINEERING LOADS:
 SNOW LOAD 50 LBS/FT²
 ROOF DEAD LOAD 10 LBS/FT²
 ROOF MAX. DEFLECTION L/240
 BEDROOM LIVE LOAD 30 LBS/FT²
 BEDROOM MAX. DEFLECTION L/360
 LIVING SPACES LIVE LOAD 40 LBS/FT²
 LIVING SPACES MAX. DEFLECTION L/360 UP TO 16', L/480 OVER 16'



1 FOUNDATION PLAN
 1/2" = 1'-0"

