

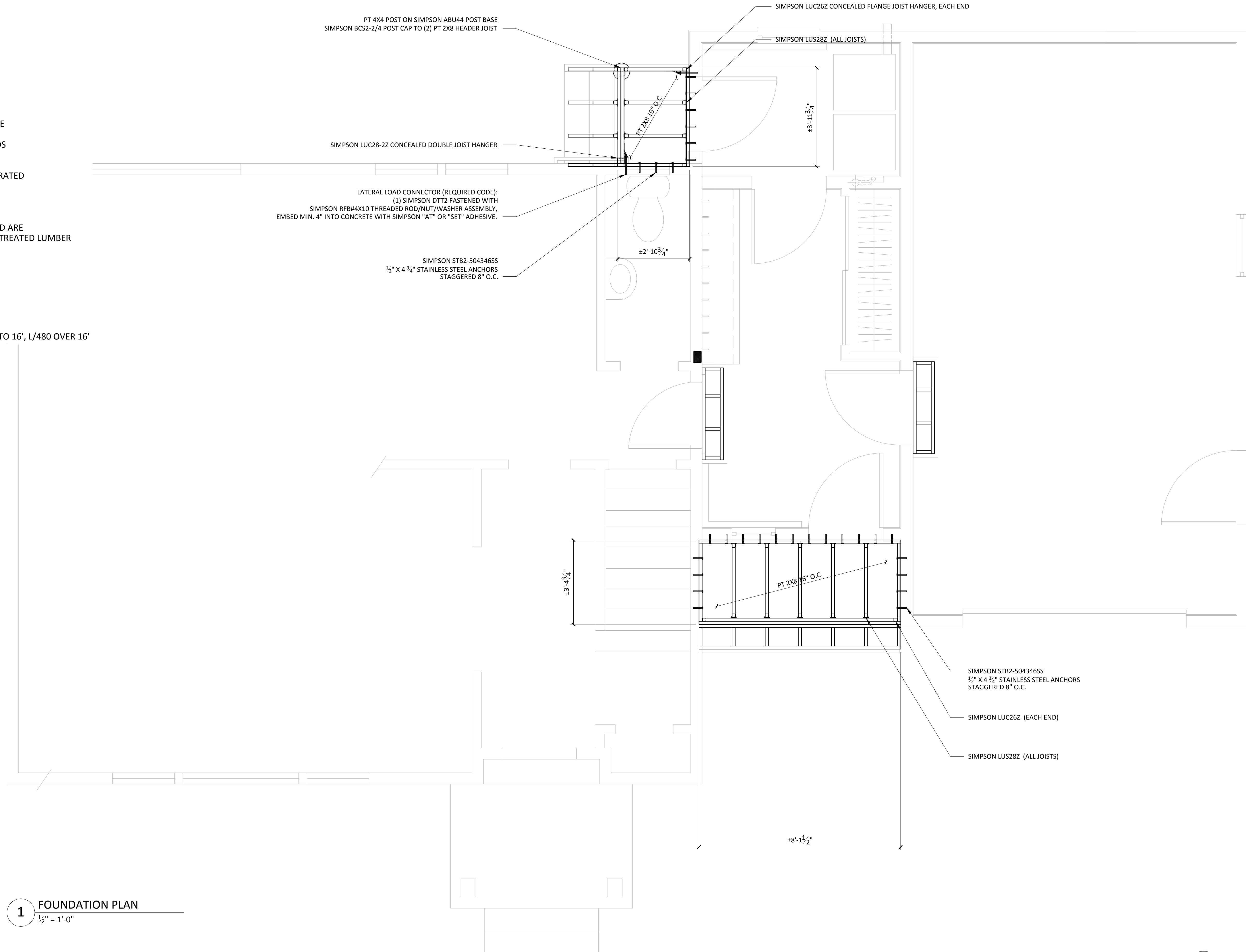
**FRAMING SPECIFICATIONS**

**EXTERIOR FRAMING LUMBER:**  
 PRESSURE TREATED SOUTHERN YELLOW PINE  
 TREATED FOR USE IN GROUND CONTACT  
 IN ACCORDANCE WITH AWPA U1 STANDARDS

**EXTERIOR HARDWARE:**  
 STAINLESS STEEL OR HOT DIP GALVANIZED, RATED  
 FOR USE WITH PRESSURE TREATED LUMBER

**INTERIOR FRAMING LUMBER:**  
 SPF #2 + BETTER  
 WHERE SILL PLATES BEAR ON CONCRETE AND ARE  
 CLOSER THAN 8" TO GRADE, USE PRESSURE TREATED LUMBER

**ENGINEERING LOADS:**  
 SNOW LOAD 50 LBS/FT<sup>2</sup>  
 ROOF DEAD LOAD 10 LBS/FT<sup>2</sup>  
 ROOF MAX. DEFLECTION L/240  
 BEDROOM LIVE LOAD 30 LBS/FT<sup>2</sup>  
 BEDROOM MAX. DEFLECTION L/360  
 LIVING SPACES LIVE LOAD 40 LBS/FT<sup>2</sup>  
 LIVING SPACES MAX. DEFLECTION L/360 UP TO 16', L/480 OVER 16'



**1 FOUNDATION PLAN**  
 1/2" = 1'-0"

