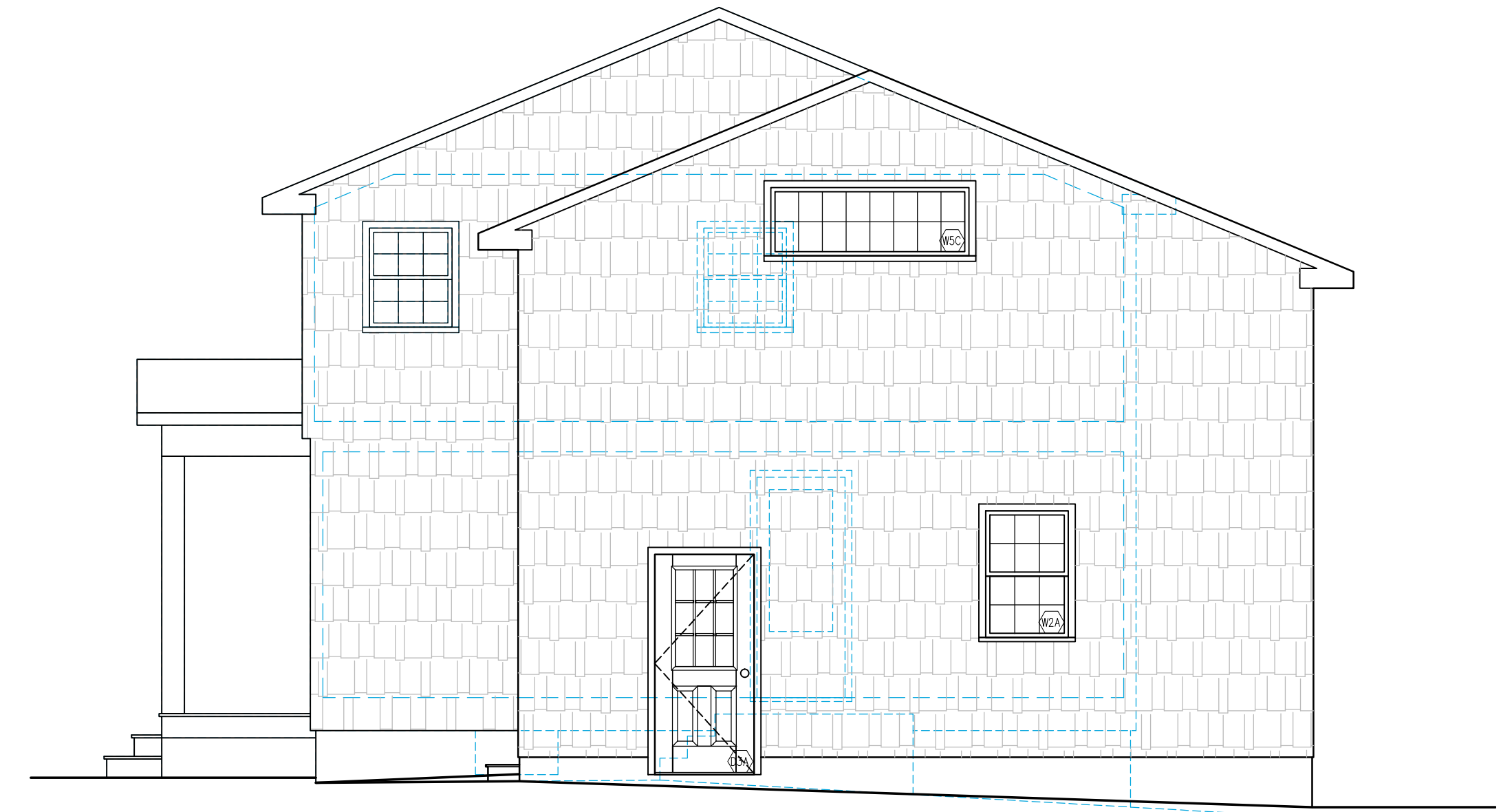




1 FRONT ELEVATION
 $\frac{1}{4}'' = 1'-0''$



3 SIDE ELEVATION
 $\frac{1}{4}'' = 1'-0''$

NOTES

NEW ROOFING AND SIDING TO MATCH EXISTING



MAX. 7" Ø SPACE AT THIS LOCATION

MIN. HANDRAIL HEIGHT AT LANDING 36"
 HANDRAIL HEIGHT AT STAIR MIN. 34", MAX. 38", MEASURED VERTICALLY FROM
 TREAD NOSING
 MAX. SPACE BETWEEN BALUSTERS 4"
 NOT SHOWN: GRASPABLE HANDRAIL AT HOUSE WALL (REQUIRED)

3 REAR ELEVATION
 $\frac{1}{4}'' = 1'-0''$

