

FOUNDATION PLAN

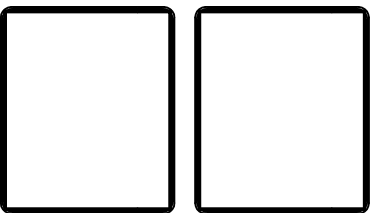
NOTES:
1/4"=1'-0"

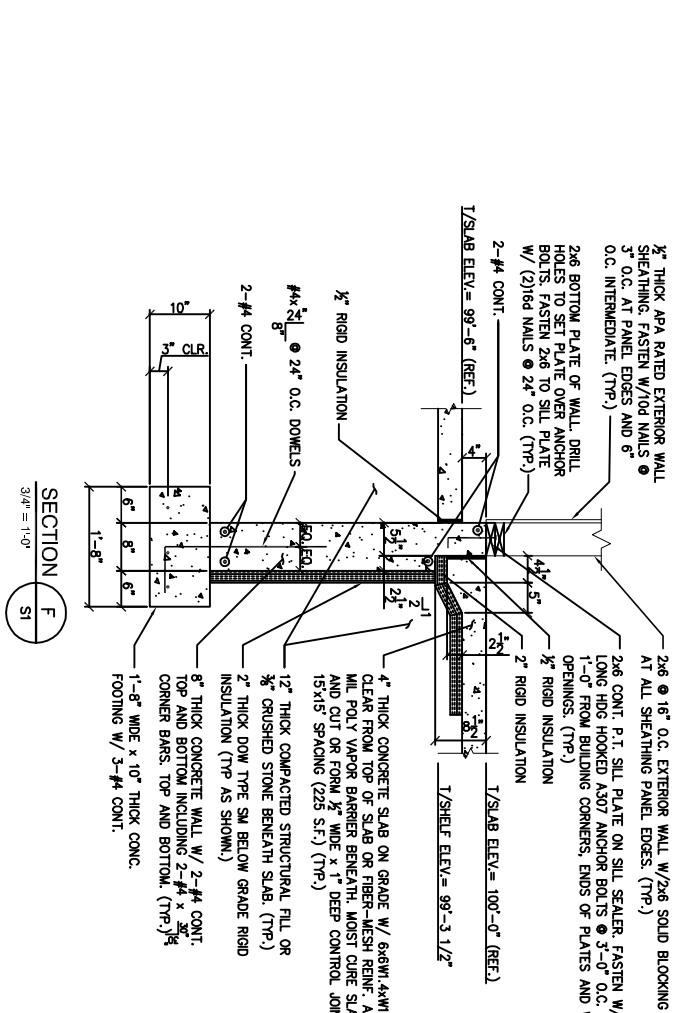
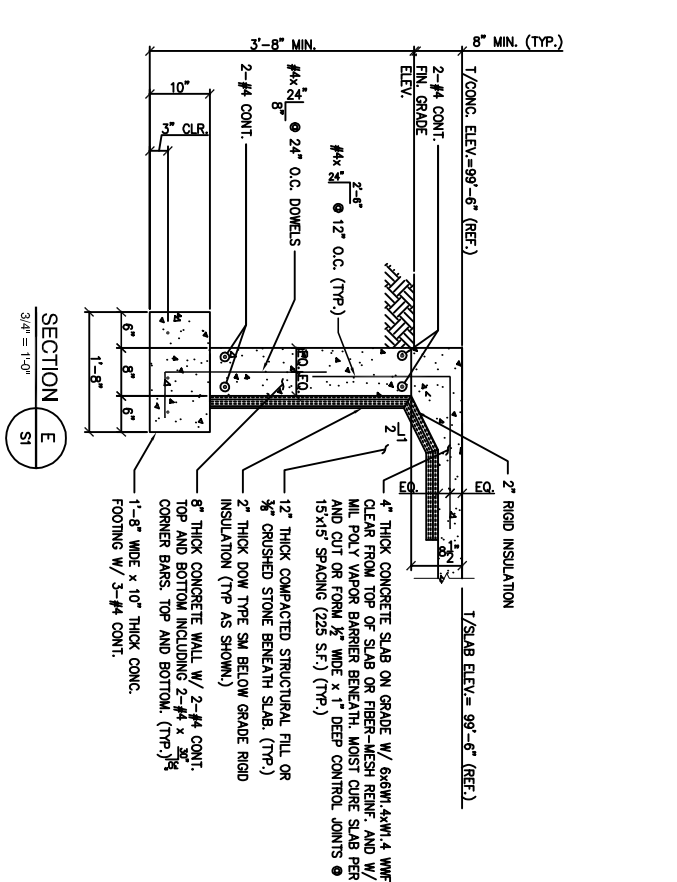
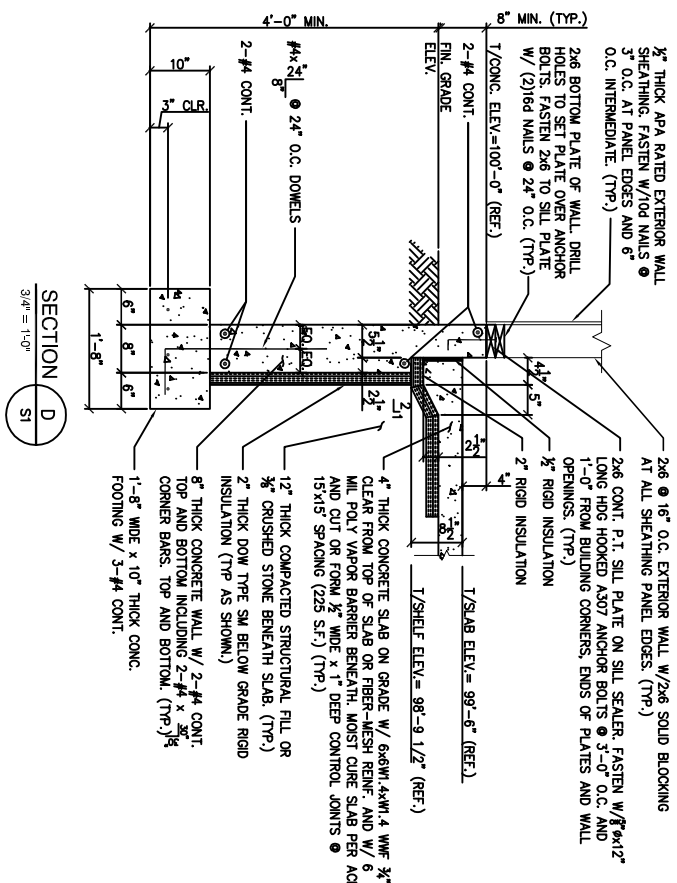
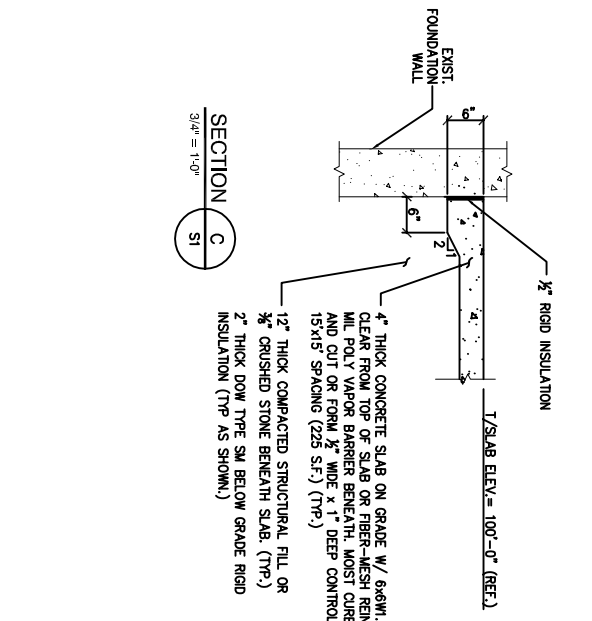
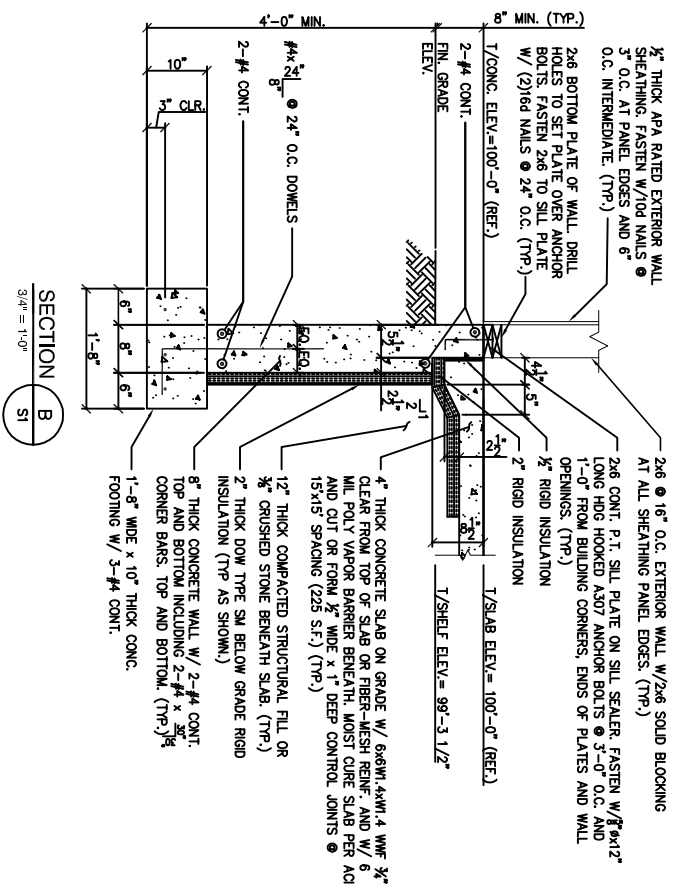
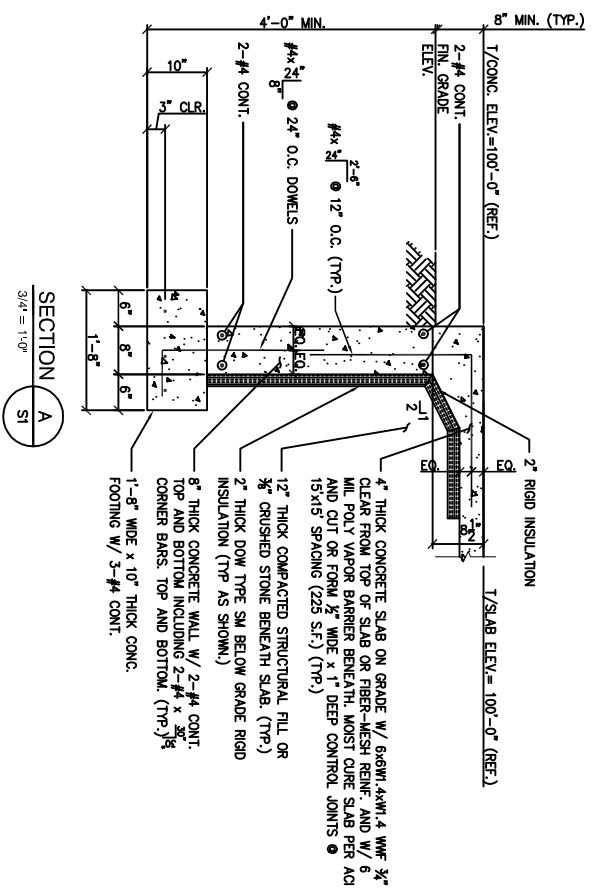
1. GC COORDINATE DOOR ROUGH OPENINGS WITH FOUNDATION DETAILS



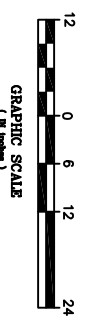
ADDITION TO:
PARADIS RESIDENCE
62 WESTMINSTER STREET
PORTLAND, ME. 04101
FOUNDATION PLAN

REV.	DATE	STATUS
8-23-11		ISSUED FOR BID



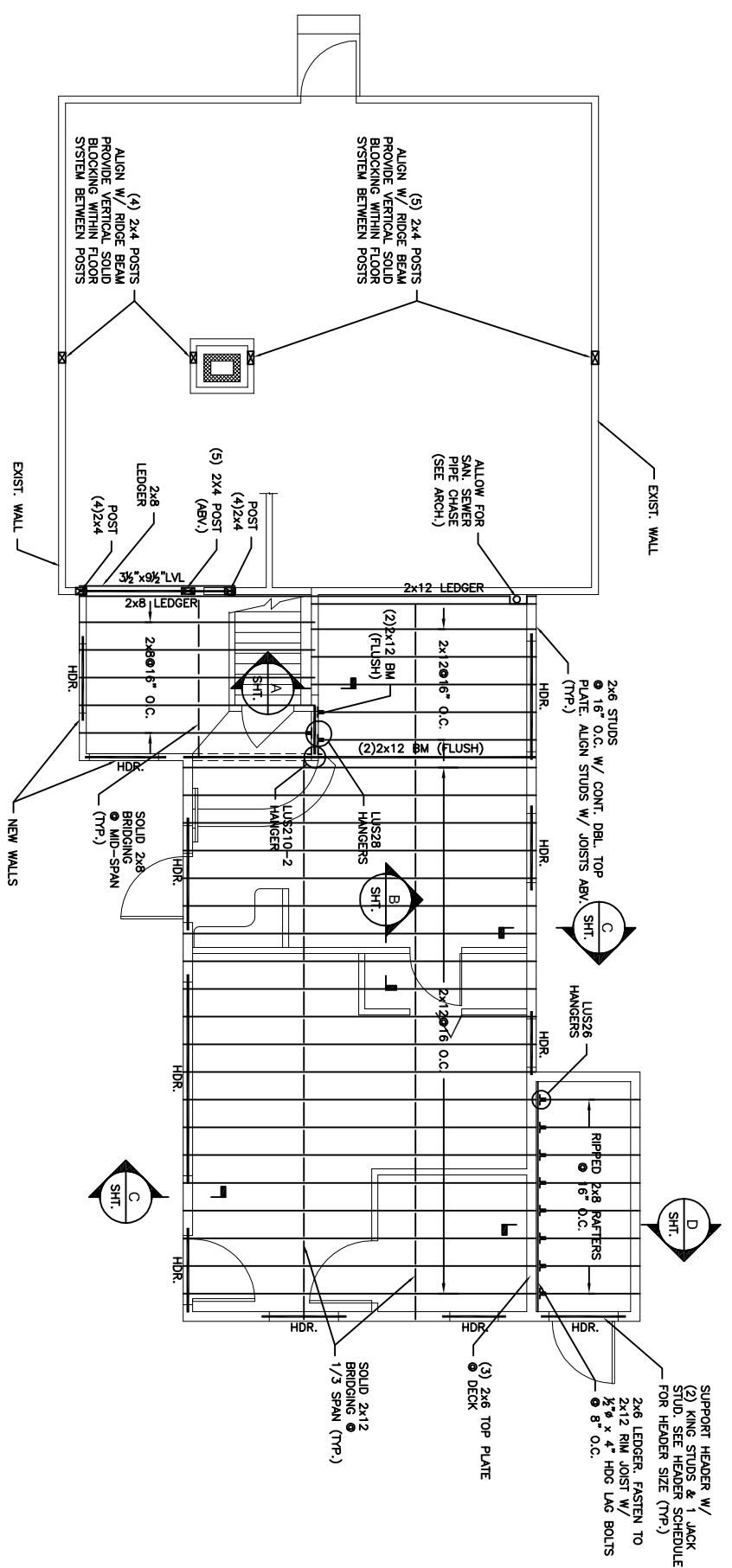


REV.	DATE	STATUS
8-23-11	ISSUED FOR BID	

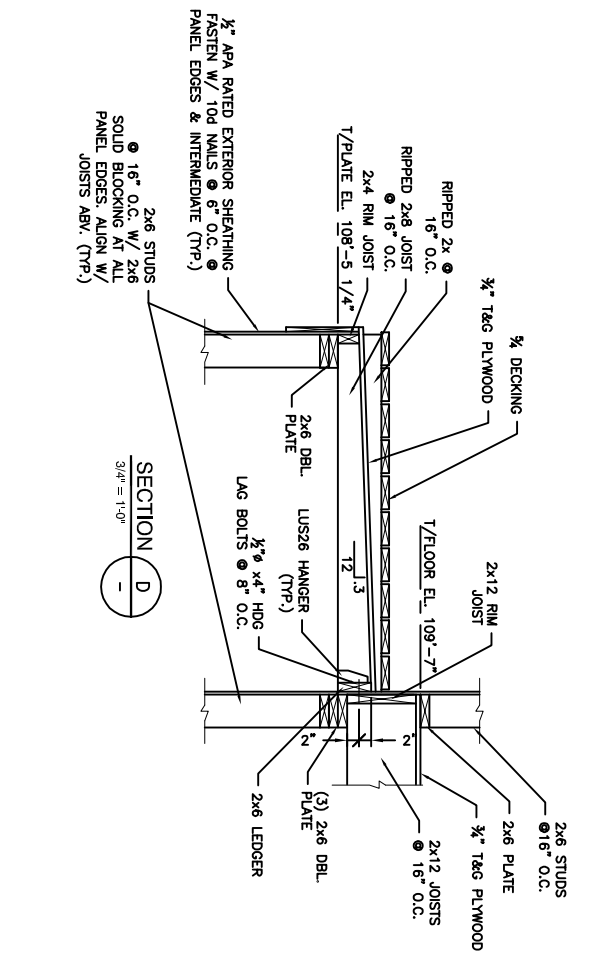
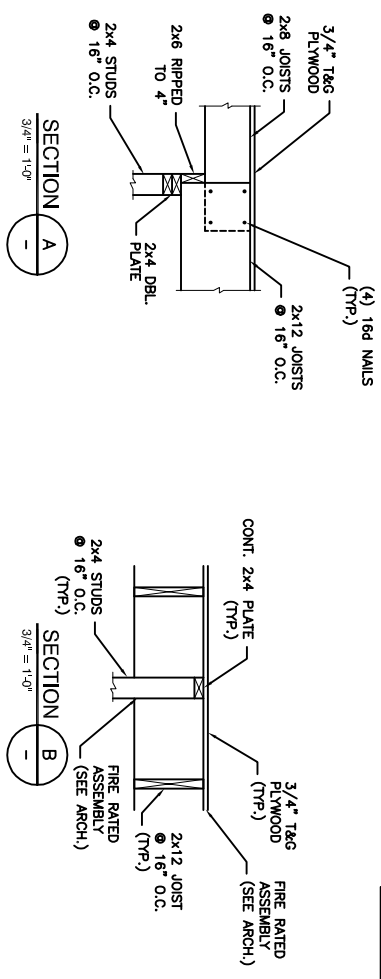


ADDITON TO:
PARADIS RESIDENCE
 62 WESTMINSTER STREET
 PORTLAND, ME. 04101
FOUNDATION SECTIONS & DETAILS

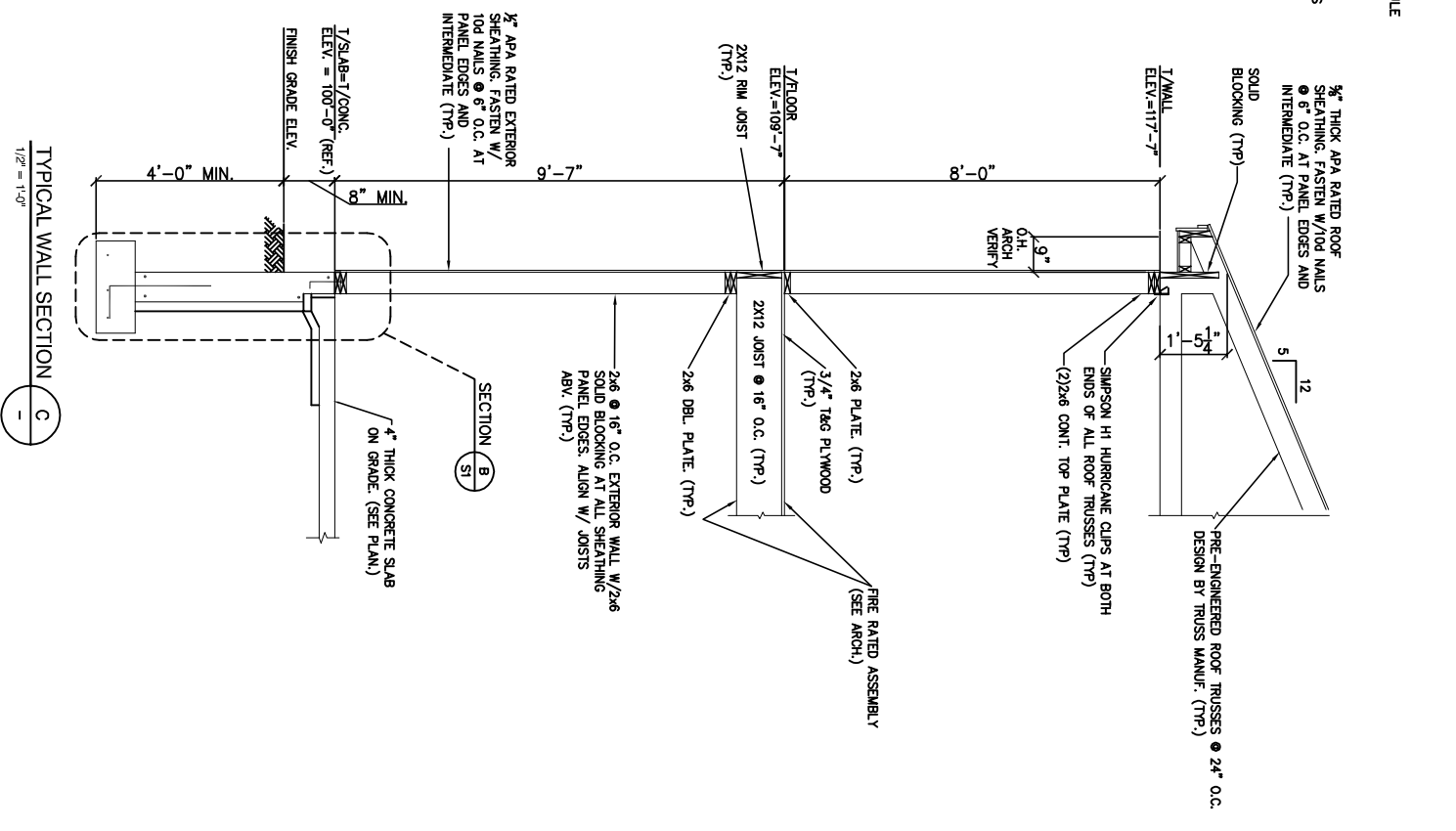




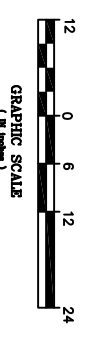
SECOND FLOOR FRAMING PLAN
1/4"=1'-0"



HEADER SCHEDULE			
ROUGH OPENING	HEADER	JAMB (BOTH ENDS OF HEADER)	
UP TD 3'-0"	(3) 2x6	2x6 JACK STUDS PLUS	2x6 KING STUDS
3'-1" - 4'-0"	(3) 2x8	(2)2x6 JACK STUDS PLUS	(2)2x6 KING STUDS
4'-1" - 5'-0"	(3) 2x10	(2)2x6 JACK STUDS PLUS	(2)2x6 KING STUDS
5'-1" - 6'-3"	(3) 2x12	(2)2x6 JACK STUDS PLUS	(2)2x6 KING STUDS
6'-4" - 8'-6"	5/4"x9 1/2" LVL	(3)2x6 JACK STUDS PLUS	(3)2x6 KING STUDS
8'-7" - 10'-6"	5/4"x11 7/8" LVL	(3)2x6 JACK STUDS PLUS	(3)2x6 KING STUDS
10'-7" - 12'-6"	5/4"x14' LVL	(4)2x6 JACK STUDS PLUS	(4)2x6 KING STUDS
12'-7" - 14'-6"	5/4"x16' LVL	(4)2x6 JACK STUDS PLUS	(4)2x6 KING STUDS
14'-7" - 16'-0"	5/4"x18' LVL	(5)2x6 JACK STUDS PLUS	(5)2x6 KING STUDS
16'-1" - 18'-0"	5/4"x20' LVL	(5)2x6 JACK STUDS PLUS	(5)2x6 KING STUDS

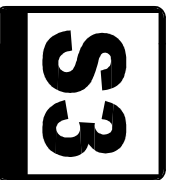


TYPICAL WALL SECTION
1/2"=1'-0"

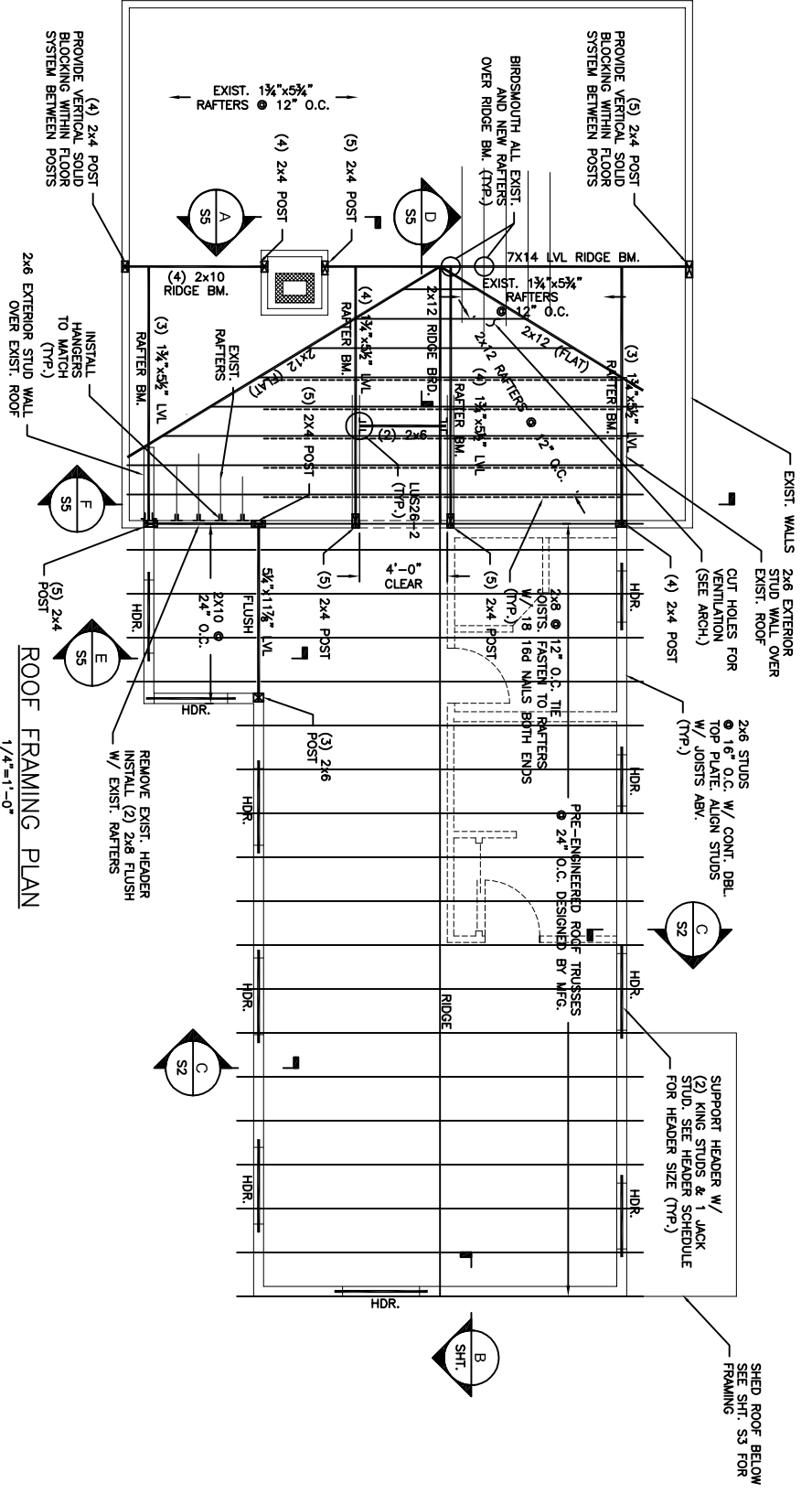


ADDITON TO:
PARADIS RESIDENCE
 62 WESTMINSTER STREET
 PORTLAND, ME. 04101
SECOND FLOOR FRAMING PLAN

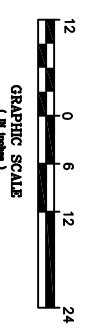
REV.	DATE	STATUS
8-23-11	ISSUED FOR BID	



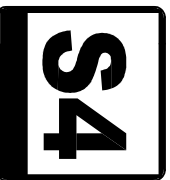
HEADER SCHEDULE			
ROUGH OPENING	HEADER	JAMB (BOTH ENDS OF HEADER)	
UP TD 3'-0"	(3) 2x6	2x6 JACK STUDS PLUS 2x6 KING STUDS	
3'-1" - 4'-0"	(3) 2x8	(2)2x6 JACK STUDS PLUS (2)2x6 KING STUDS	
4'-1" - 5'-0"	(3) 2x10	(2)2x6 JACK STUDS PLUS (2)2x6 KING STUDS	
5'-1" - 6'-3"	(3) 2x12	(2)2x6 JACK STUDS PLUS (2)2x6 KING STUDS	
6'-4" - 8'-6"	5/4"x9 1/2" LVL	(3)2x6 JACK STUDS PLUS (3)2x6 KING STUDS	
8'-7" - 10'-6"	5/4"x11 7/8" LVL	(3)2x6 JACK STUDS PLUS (3)2x6 KING STUDS	
10'-7" - 12'-6"	5/4"x14" LVL	(4)2x6 JACK STUDS PLUS (4)2x6 KING STUDS	
12'-7" - 14'-6"	5/4"x16" LVL	(4)2x6 JACK STUDS PLUS (4)2x6 KING STUDS	
14'-7" - 16'-0"	5/4"x18" LVL	(5)2x6 JACK STUDS PLUS (5)2x6 KING STUDS	
16'-1" - 18'-0"	5/4"x20" LVL	(5)2x6 JACK STUDS PLUS (5)2x6 KING STUDS	



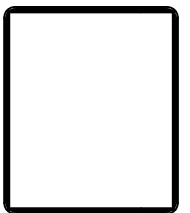
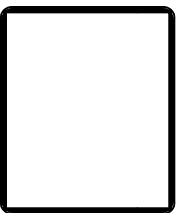
ROOF FRAMING PLAN
1/4"=1'-0"

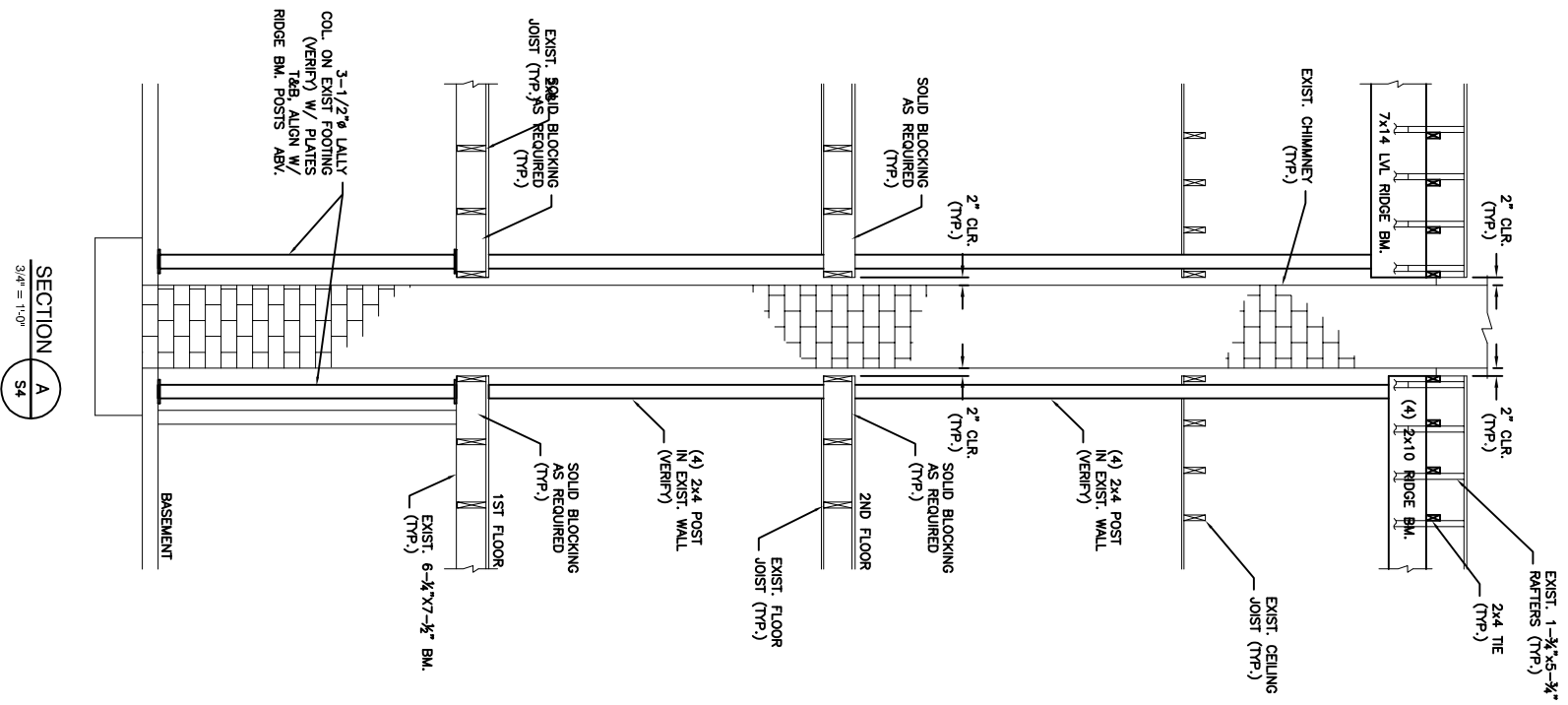


ADDITION TO:
PARADIS RESIDENCE
 62 WESTMINSTER STREET
 PORTLAND, ME. 04101
ROOF FRAMING PLAN

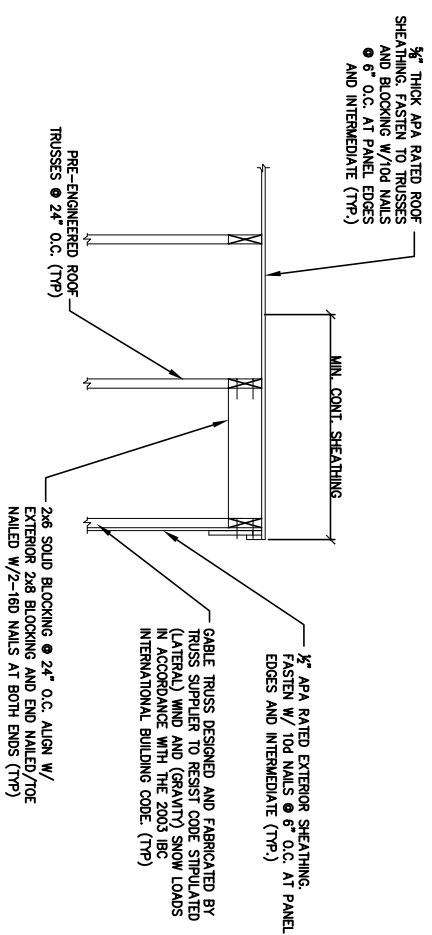


REV.	DATE	STATUS
	8-23-11	ISSUED FOR BID

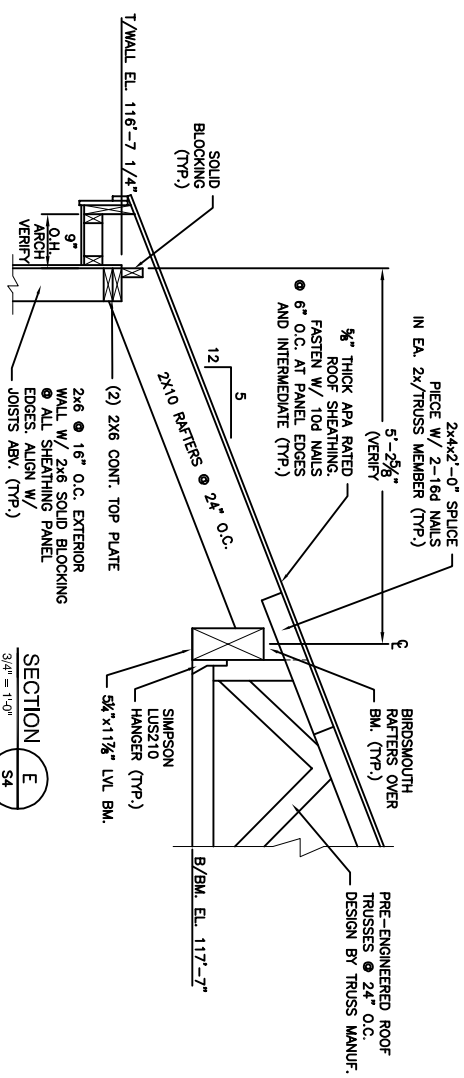




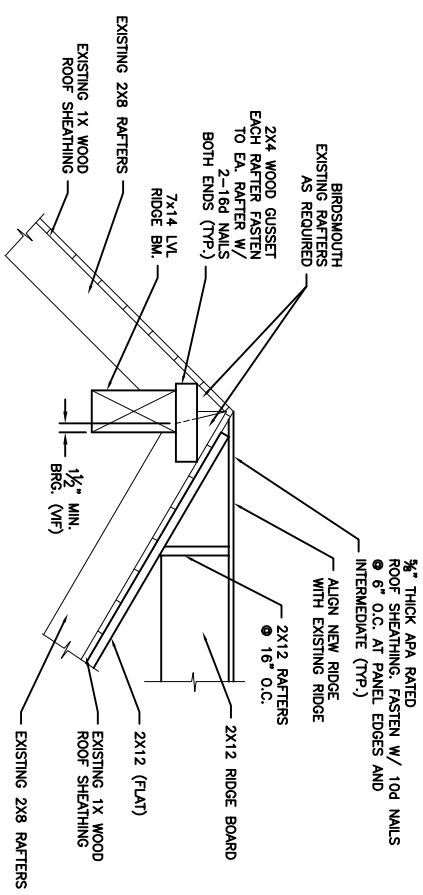
SECTION A
3/4" = 1'-0"



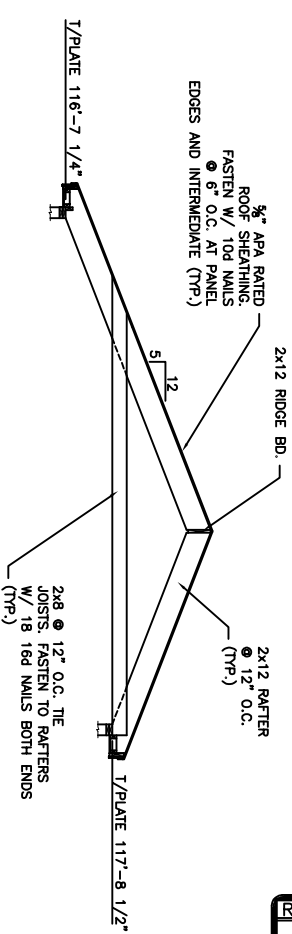
SECTION B
3/4" = 1'-0"



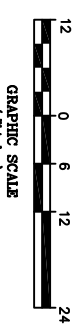
SECTION C
3/4" = 1'-0"



SECTION D
3/4" = 1'-0"



SECTION E
1/4" = 1'-0"



GRAPHIC SCALE
(1" = 6'-0")

REV.	DATE	STATUS
1	8-23-11	ISSUED FOR BID

ADDITION TO:
PARADIS RESIDENCE
62 WESTMINSTER STREET
PORTLAND, ME. 04101
ROOF FRAMING PLAN

S5