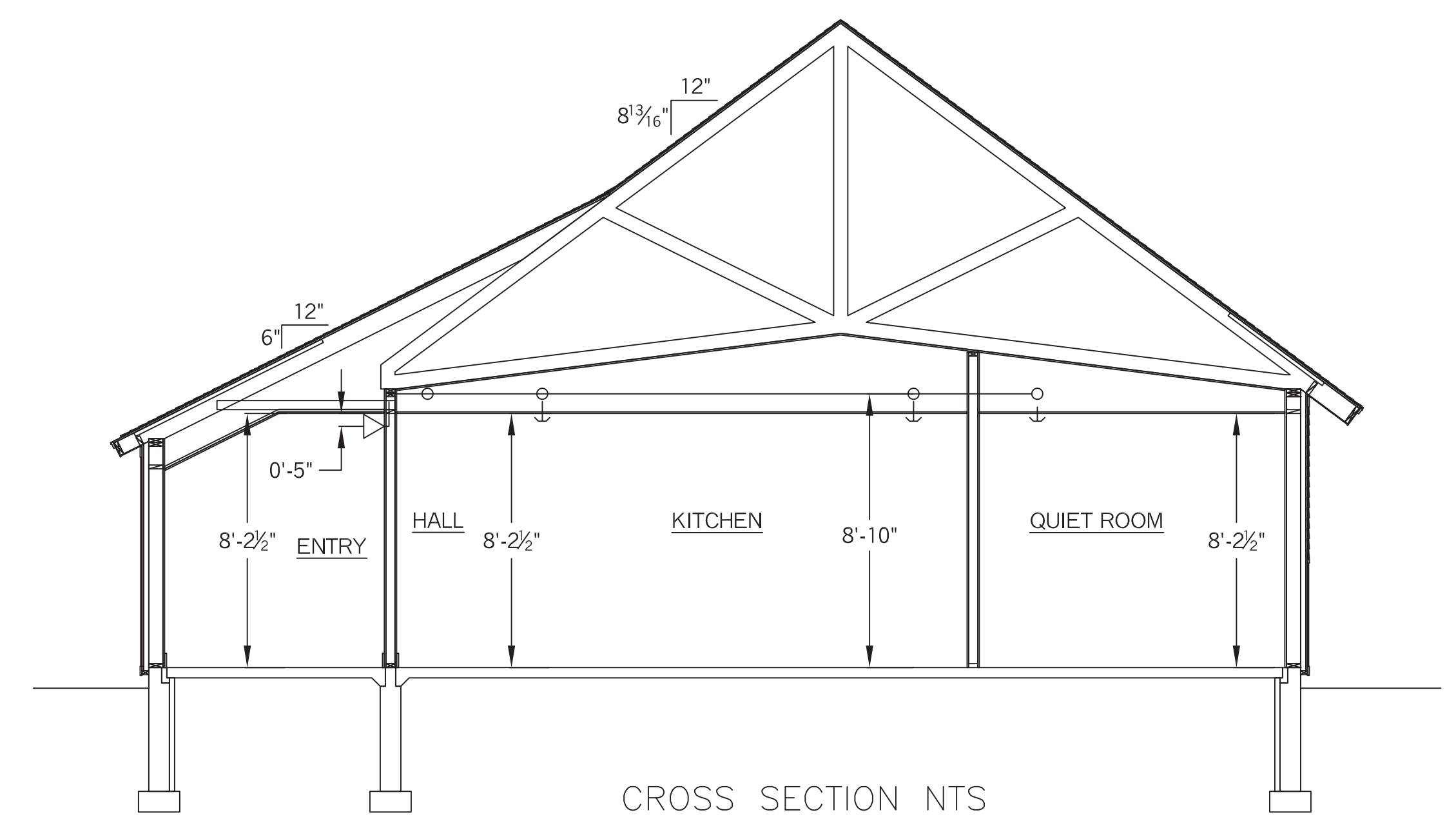
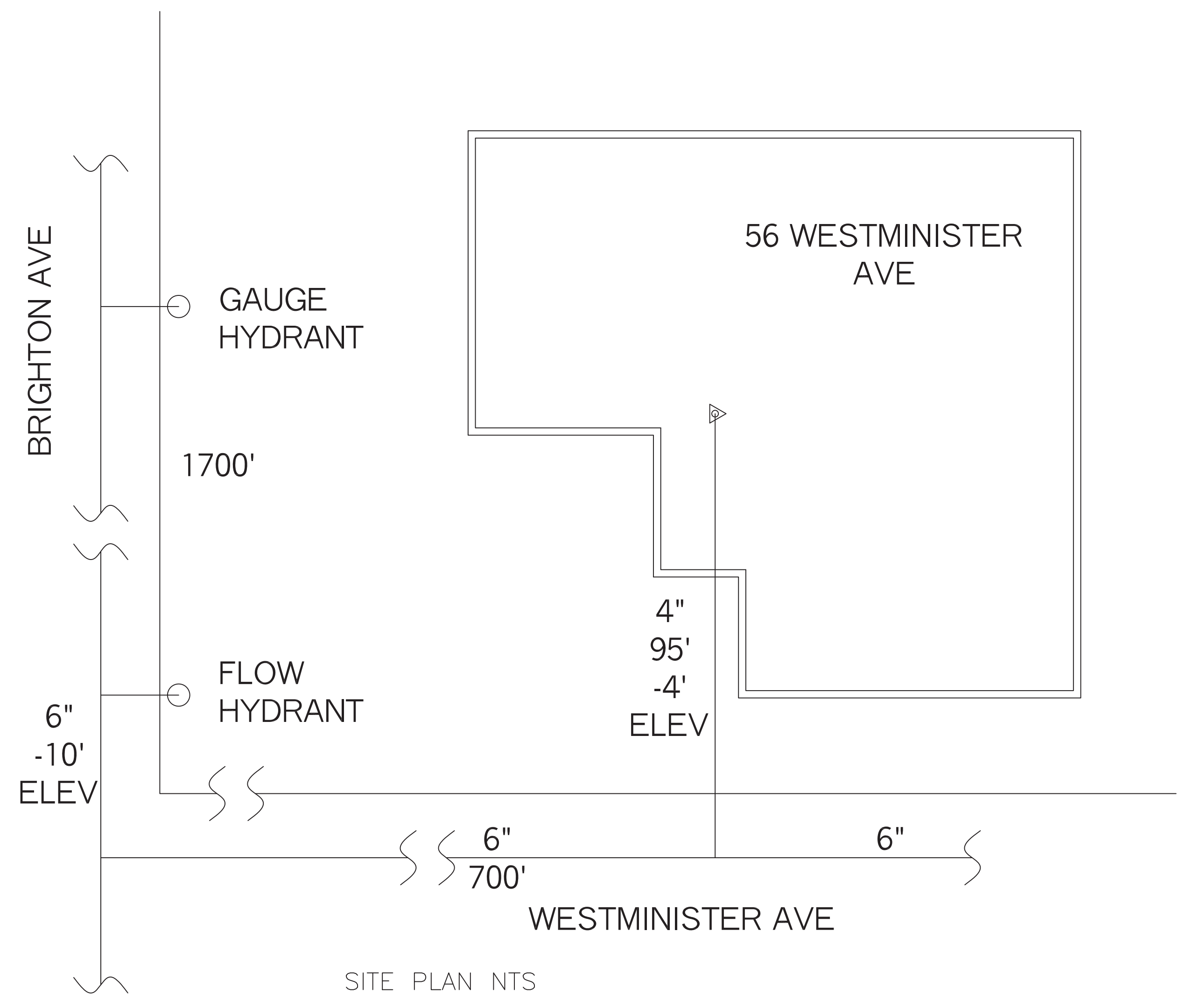


2 1/2" SINGLE FDC AT 3'-0" (+/-) ELECTRIC BELL PROVIDED BY RFP & INSTALLED BY ELECTRICIAN

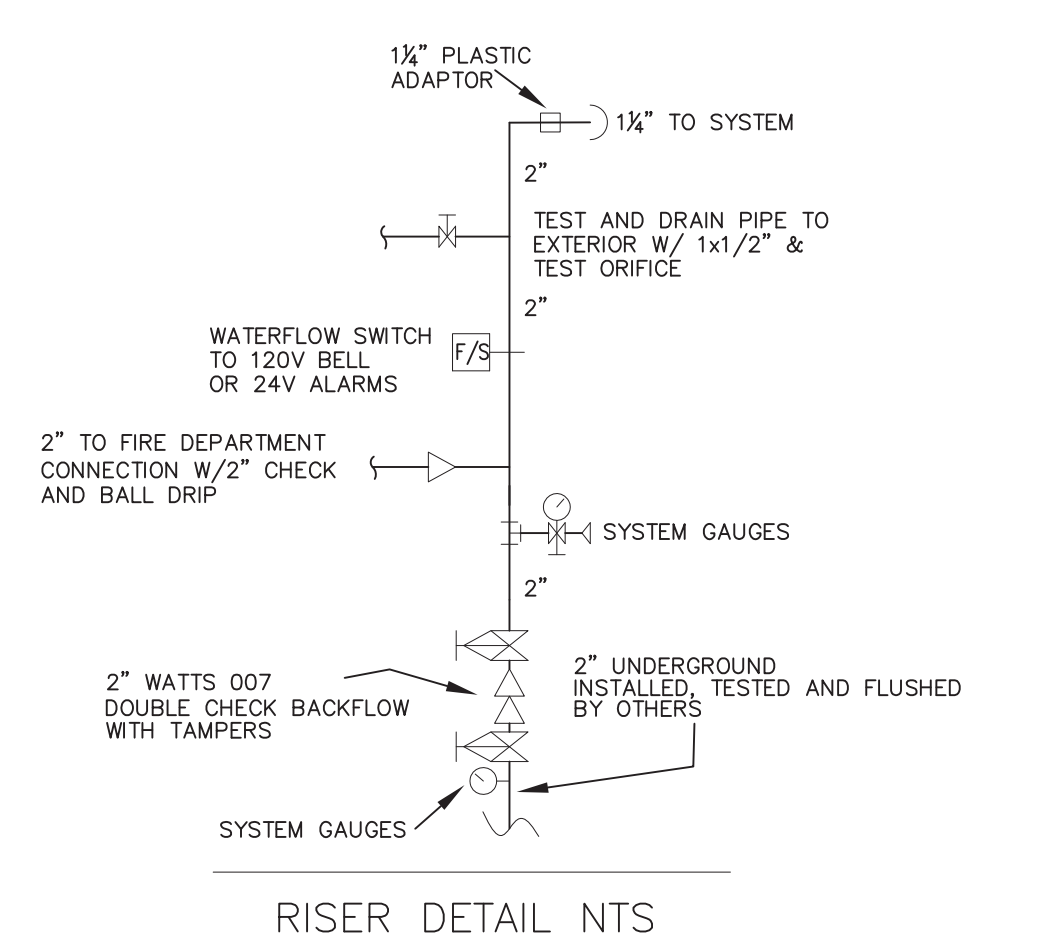
HYDRAULIC DATA:
 DINING AREA
 BASIS OF DESIGN NFPA 13R
 DENSITY .10 AREA OF COVERAGE 4 SPRINKLERS
 TOTAL THREAD TEMP 155
 SPRINKLERS 4 1/2" 155
 SYSTEM DEMAND AT PUMP OUTLET:
 PRESSURE FLOW HOSE
 75.612 161.965 100
 SAFETY MARGIN: 14.365
 OCCUPANCY: RESIDENTIAL



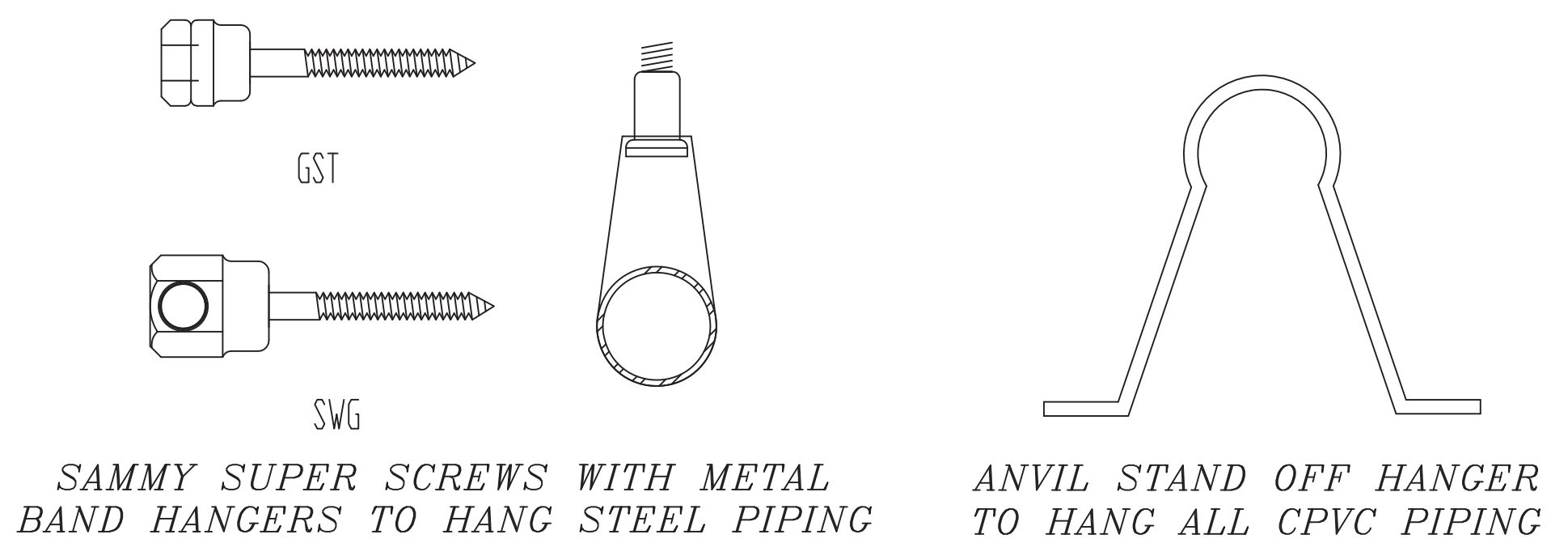
CROSS SECTION NTS



SITE PLAN NTS



RISER DETAIL NTS



SAMMY SUPER SCREWS WITH METAL BAND HANGERS TO HANG STEEL PIPING
 ANVIL STAND OFF HANGER TO HANG ALL CPVC PIPING

WATER SUPPLY INFO

STATIC = 90
 RESIDUAL = 89
 FLOW = 1838
 DATE = 10-22-09
 LOCATION = BRIGHTON AVE.
 SOURCE = PORTLAND WATER DIST.

- LEGEND**
- ▷ 155°F RES 1/2" WHITE SIDEWALL
 - 155°F 1/2 BRASS UPRIGHT
 - ⊗ 155°F RES 1/2" WHITE RECESSED PENDENT
 - HANGER
 - RISE OR DROP NIPPLE
 - VICTAULIC COUPLING

FF k=XX FIN FLR TO CENTERLINE OF PIPE
 C k=XX CEILING TO CENTERLINE OF PIPE
 TJ k=TOP OF JOIST TO CENTERLINE OF PIPE
 BJ k=BOTTOM OF JOIST TO CENTERLINE OF PIPE
 BB k=BOTTOM OF BEAM TO CENTERLINE OF PIPE
 ELEV k=CIVIL ELEVATION OF CENTERLINE OF PIPE

GENERAL NOTES

ALL DIMENSIONS ARE CENTER TO CENTER U/N
 ALL THREADED PIPE TO BE SCH. 40 BLACK STEEL
 ALL SCREWED FITTINGS TO BE STD. WT. C.I. BLACK U/N
 ALL GROOVED PIPE TO BE SCH 10 BLACK STEEL
 ALL OTHER PIPING TO BE CPVC PLASTIC
 ALL OTHER FITTINGS TO BE CPVC PLASTIC

- ▷ 4 155°F VIKING VK486 WHITE RESIDENTIAL SIDEWALLS 1/2"x1/2" K=4.2
- ⊗ 22 155°F VIKING VK468 WHITE RESIDENTIAL RECESSED PENDENTS 1/2"x1/2" K=4.9

SYSTEM DESIGN
 A WET PIPE SYSTEM OF AUTOMATIC SPRINKLERS TO BE DESIGNED AND INSTALLED PER NFPA 13R WITH SPRINKLER PROTECTION IN ALL BATHROOMS & CLOSETS ALL SPRINKLERS TO BE BASED ON LIGHT HAZARD

RESIDENTIAL FIRE PROTECTION, LLC
 PHONE: (207) 946-3473 FAX: (207) 946-3474
 64 DAGGETT HILL ROAD GREENE, MAINE 04236

REVISION NUMBER	DATE	SURVEYED BY	JAL 07-03-13	TITLE
		DRAWN BY	JAL 07-08-13	
		APPROVED BY	SJC 07-08-13	
				SCALE 1/4" = 1'-0" U/N
				1" = 4' 8"
				SHEET NO. 1 OF 1

GMS WESTMINSTER
 56 WESTMINSTER AVE
 PORTLAND, MAINE

NO. OF SPRINKLERS SHOWN ON THIS SHEET	26
NO. OF SPRINKLERS ON THIS SHEET	26
CONTRACT NO.	C13018