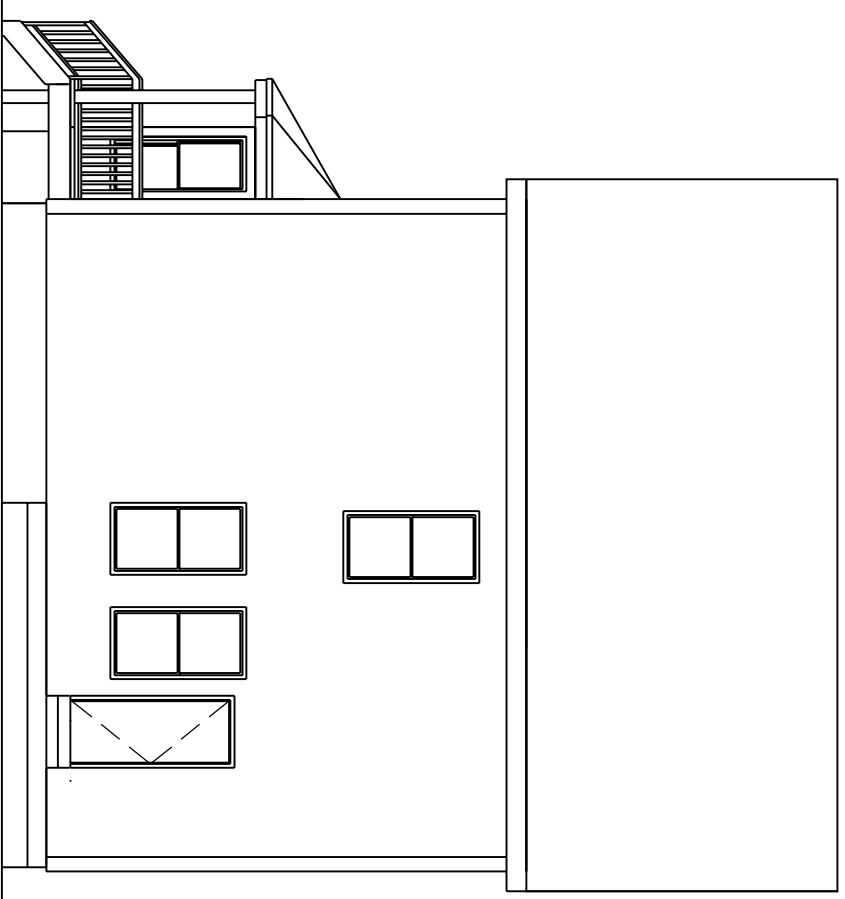
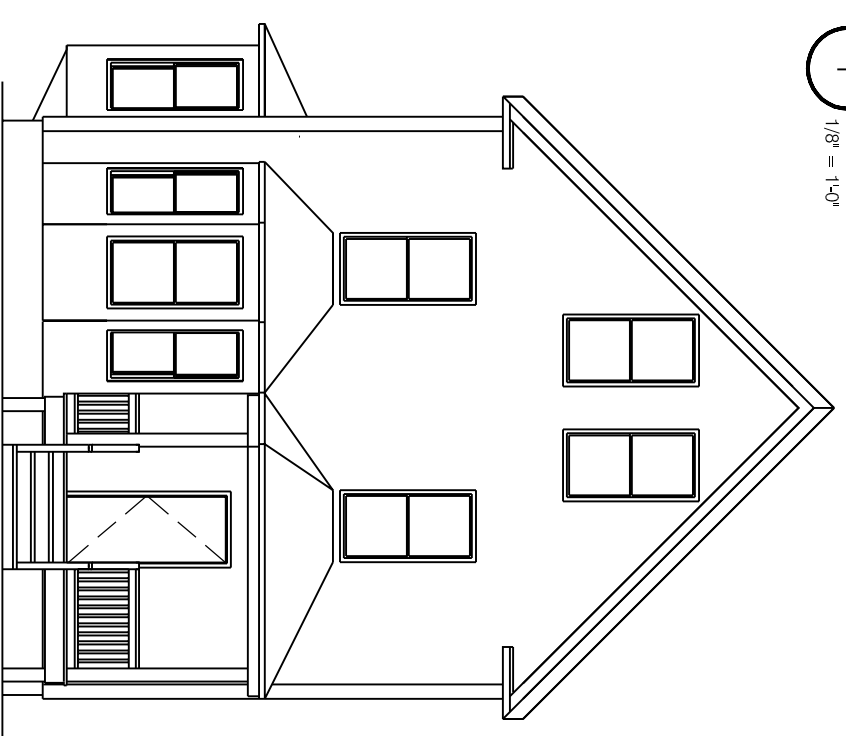


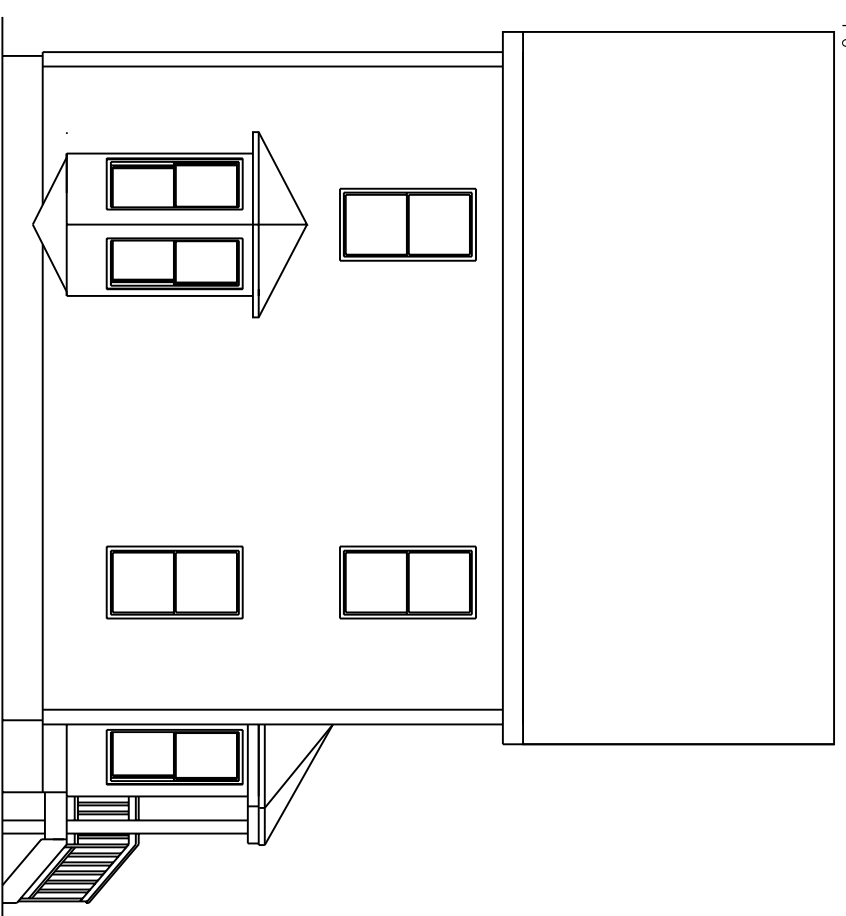
1 NORTH ELEVATION
1/8" = 1'-0"



2 EAST ELEVATION
1/8" = 1'-0"



3 SOUTH ELEVATION
1/8" = 1'-0"



4 WEST ELEVATION
1/8" = 1'-0"

EXISTING ELEVATIONS
COOK BOGGIATTO

DATE:	2.21.2014
DRAWN BY:	BB
A-2.1	