

Introducing The New Standard of
High Efficiency Wallhung Boilers



Baxi Luna Duo-Tec

- ◆ 7:1 modulation ratio promotes savings in fuel use and utility bills
- ◆ Gas-adaptive control enables precise setup and commissioning
- ◆ Self-calibration function ensures continuous optimum combustion

Baxi Promises Quality, Reliability and Optimal Heating Comfort

Baxi's track record for manufacturing leading wallhung boiler technology spans four decades. Now, as other boiler manufacturers try to enter the category, Baxi innovation presents a significant leap forward in proven, reliable wallhung heating for homeowners and commercial property managers.

Field tested throughout North America, the new Baxi Luna Duo-Tec wallhung boiler features a 7:1 modulation ratio, plus gas-adaptive and self-calibrating advances. Up to 98 per cent energy efficient, it is ideal for a range of applications – from in-floor radiant and hydronic air handler systems, to high or low temperature radiators and snowmelt.

Sustainable Savings

- ◆ Its 7:1 modulation ratio generates significant savings in both fuel use and utility bills.
- ◆ Approved for closet installation, the boiler frees up valuable living space.
- ◆ A low-NOx, no-lead content heating appliance, the Luna Duo-Tec emits 90% less CO and 80% less NOx pollutants into the environment.

Reliable Comfort

- ◆ Automatic upfront deaeration and gas adaption, plus ongoing self-calibration promise precise setup, commissioning and performance.
- ◆ The built-in controller regularly checks for optimal combustion, providing high efficiency throughout the life of the boiler.
- ◆ The combination heating and domestic hot water model produces endless domestic hot water, at a flow rate of 3.9 gallons per minute.

Peace of Mind

- ◆ An optional 10-year extended parts and labor warranty is available to property owners through Baxi trained and certified heating and plumbing contractors.
- ◆ Baxi safety assurance starts with comprehensive factory testing, followed by extensive field testing throughout North America..
- ◆ Baxi Luna Duo-Tec boilers are Energy Star listed and CSA approved, bearing the ASME H-Stamp.

Always Be Certain with Baxi Luna Duo-Tec

Baxi Luna Duo-Tec modulating, condensing boilers can be connected with...



Solar Water Heating with Indirect Storage Tanks



Hydronic Air Handler



Designer High Output Radiators



Heated Towel Warmers

Optional Accessories



Baxi 4-to-1 Multi-Zone Controller (MLC 30B) can manage up to four non-mixed zones, each with its own thermostat



Baxi Remote RC Modulating Controller operates as a room thermostat and enables remote review of boiler information and setting of parameters

Baxi Modulo

The Modulo is a sleek and compact combination system that features a Baxi Luna Duo-Tec 1.33 GA heating-only boiler atop a 21-gallon (US) stainless steel, insulated storage tank. It produces 145 gallons of domestic hot water in half an hour.



Luna Duo-Tec Field Tests

Baxi Quality and Safety is Always First

Baxi always puts quality, reliability and safety first, starting with thorough factory testing of each built-in component of a gas-fired Baxi boiler. Extensive field testing is a Baxi requirement before introducing any new product in North America. Finally, Marathon International and its North American network of representatives and exclusive regional distributors promote Baxi training and certification among leading heating and plumbing contractors with gas experience.

Baxi certified contractors applaud the Baxi Luna Duo-Tec's automatic gas-adaptive and self-calibrating capabilities and up to 7:1 turndown as key safety and performance assurances. At installation, an installer verifies

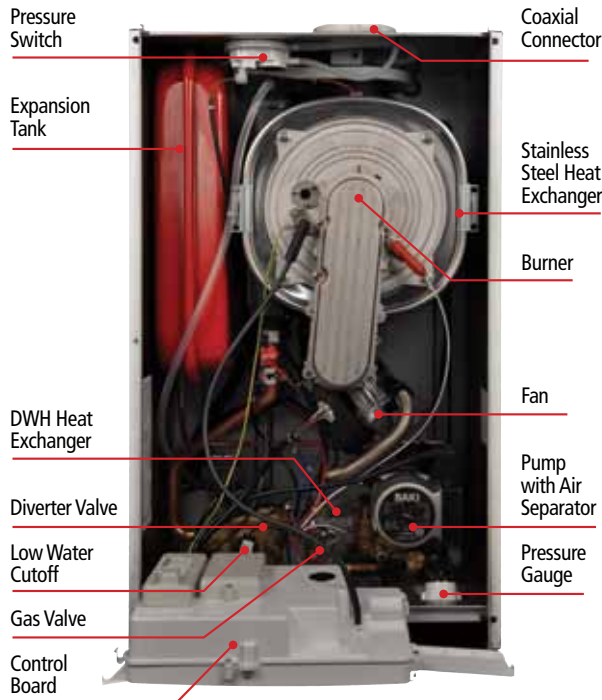
that the boiler has intelligently determined that the source of gas is either natural gas or propane. The interactive control panel on the front of the boiler verifies that all boiler parameters are set up with pinpoint accuracy. This self-calibrating feature is repeated regularly throughout the life of the boiler, ensuring the highest level of performance efficiency possible.



The large digital control panel on the front of the boiler displays any operating error codes, facilitating service and maintenance. Baxi certified contractors also like that both side panels and the front panel can be removed for easy servicing.

Baxi Luna Duo-Tec homeowners can **always be certain** they have the most compact and efficient, quietest, smartest and safest wallhung boiler available.

Built-In Value Added



Baxi Luna Duo-Tec is a high efficiency modulating, condensing wallhung boiler with multiple built-in safety and performance enhancing components.

- ◆ 7:1 turndown ratio enhances versatility and optimal efficiency.
- ◆ Automatic gas-adaptive and self-calibrating functions enhance combustion efficiency and lower fuel bills.
- ◆ Two-speed modulating pump with built-in air vent generates up to 40% reduction in electrical use annually.
- ◆ Stainless steel ANSI 316L pre-mixed burner and heat exchanger (which comes with a 10-year warranty) assures longevity.
- ◆ Enhanced stainless steel secondary heat exchanger delivers domestic hot water.
- ◆ Controller with large backlit digital display on front of boiler makes it easy to set up and service.
- ◆ Pre-heat function helps eliminate cold water sandwich.
- ◆ Ability to accept preheated solar water.
- ◆ Frost protection, as well as pump and diverter valve seize prevention.
- ◆ Approved for closet installation, saving valuable living space.
- ◆ Ask a Baxi certified contractor about other built-in performance and safety features including high limit sensors, low water cut-off, shut off valves, pressure relief valve, system pressure gauge, expansion tank and auto bypass.

Baxi Luna High Efficiency Technical Notes			Baxi Luna Duo-Tec Residential Models		Baxi Luna Commercial Models		
			40 GA	1.33 GA	HT 1.45	HT 1.65	HT 1.100
Rated heat input	BTU/hr	125,908	125,908	167,262	241,600	379,127	
Reduced heat input	BTU/hr	21,838	21,838	55,681	73,361	112,980	
Rated heat output	BTU/hr	112,601	112,601	153,456	221,789	348,039	
Reduced heat output	BTU/hr	19,108	19,108	52,058	69,326	106,766	
Rated Domestic input	BTU/hr	153,864	n/a	n/a	n/a	n/a	
Reduced Domestic input	BTU/hr	21,838	n/a	n/a	n/a	n/a	
Rated Domestic output	BTU/hr	136,486	n/a	n/a	n/a	n/a	
Reduced Domestic output	BTU/hr	19,108	n/a	n/a	n/a	n/a	
Sealed combustion chamber		Yes	Yes	Yes	Yes	Yes	
Ignition		Electronic	Electronic	Electronic	Electronic	Electronic	
Freeze Protection Safety Device		Yes	Yes	Yes	Yes	Yes	
Maximum pressure on heating circuit	psi	30	30	30	30	30	
Regulation of heating circuit water temperature	- high temp	°F/°C	176/80	176/80	176/80	176/80	
	- low temp	°F/°C	77/25	77/25	77/25	77/25	
Dimensions:	Height	in	30	30	37 ¹³ / ₃₂	37 ¹³ / ₃₂	
	Width	in	17 ²⁵ / ₃₂	17 ²⁵ / ₃₂	23 ⁵ / ₈	23 ⁵ / ₈	
	Depth	in	13 ¹⁹ / ₃₂	13 ¹⁹ / ₃₂	18 ²³ / ₆₄	18 ²³ / ₆₄	
Coaxial Vent Diameter	in	2 ³ / ₈ - 3 ¹⁵ / ₁₆	2 ³ / ₈ - 3 ¹⁵ / ₁₆	3 ⁵ / ₃₂ - 4 ¹⁵ / ₁₆	3 ⁵ / ₃₂ - 4 ¹⁵ / ₁₆	4 ¹¹ / ₃₂ - 6 ⁵ / ₈	
	mm	60-100	60-100	80-125	80-125	110-160	
Dual Flue Vent Diameter	in mm	3 ⁵ / ₃₂ 80	3 ⁵ / ₃₂ 80	3 ⁵ / ₃₂ 80	3 ⁵ / ₃₂ 80	4 ¹¹ / ₃₂ 110	
Net weight	lbs	102	102	141	158	215	
Gas type		NG/LPG	NG/LPG	NG/LPG	NG/LPG	NG/LPG	



Marathon International
 Exclusive North American Distributor for Baxi Products
 1815 Sismet Road, Mississauga
 Ontario L4W 1P9, Canada
 info@wallhungboilers.com

www.wallhungboilers.com

Baxi is ISO 9001 certified for quality management, OHSAS 18001 for health and safety management and ISO 14001 for environmental management.

The Company assumes no responsibility for any possible contents mistakes, and reserves the right to make changes in products, due to technical or commercial demands, at any time without notice.

