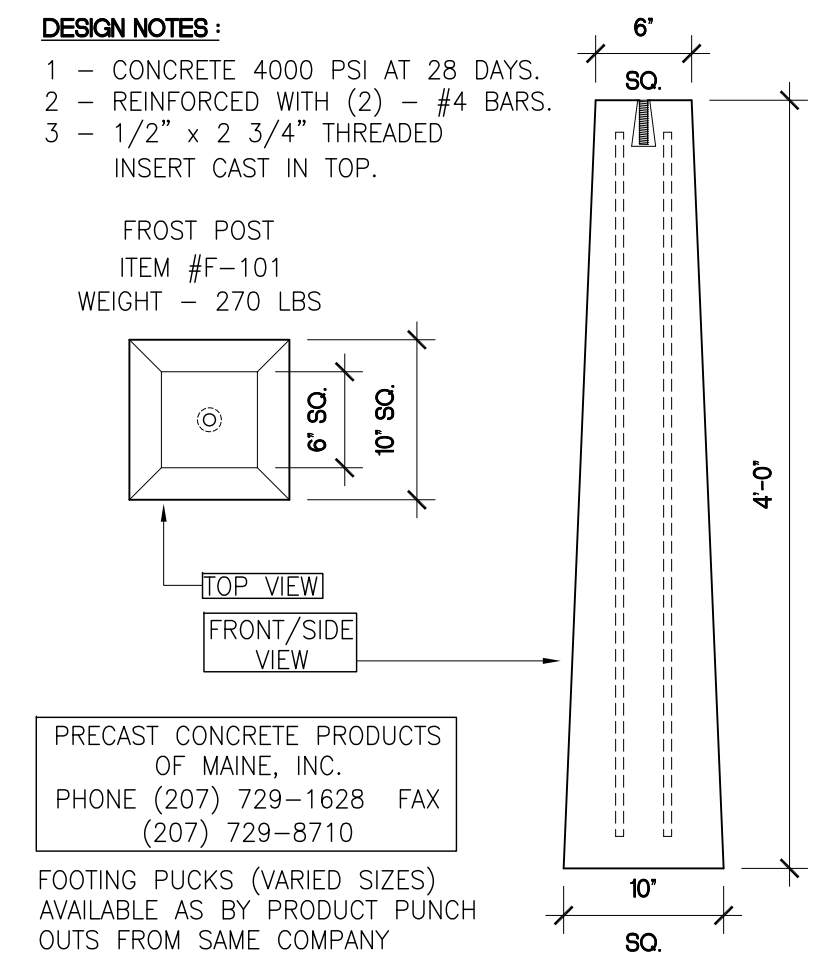
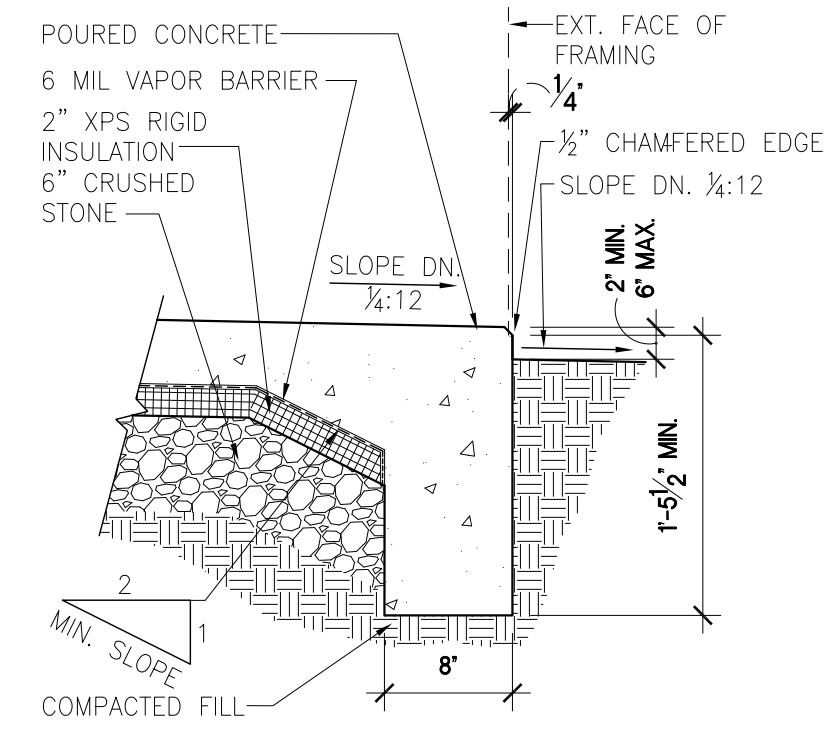


6 PIER FOUNDATION SECTION DETAIL
SCALE: 3/4"=1'-0"
0 6" 12" 2'-0"

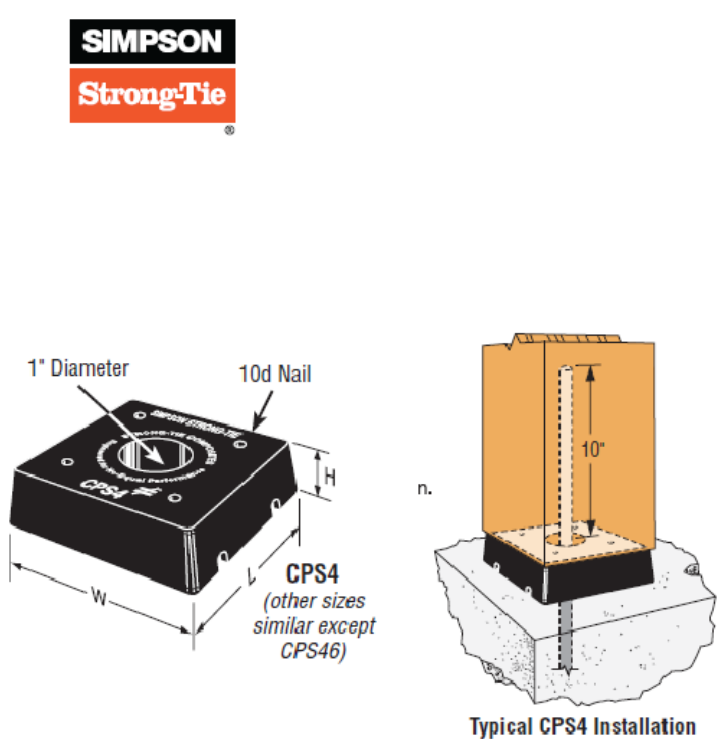


3 PRECAST CONCRETE PIER DETAILS
SCALE: 1"=1'-0"
0 6" 12" 2'-0"



2 TURN DOWN SLAB SECTION DETAIL
SCALE: 1"=1'-0"
0 6" 12" 2'-0"

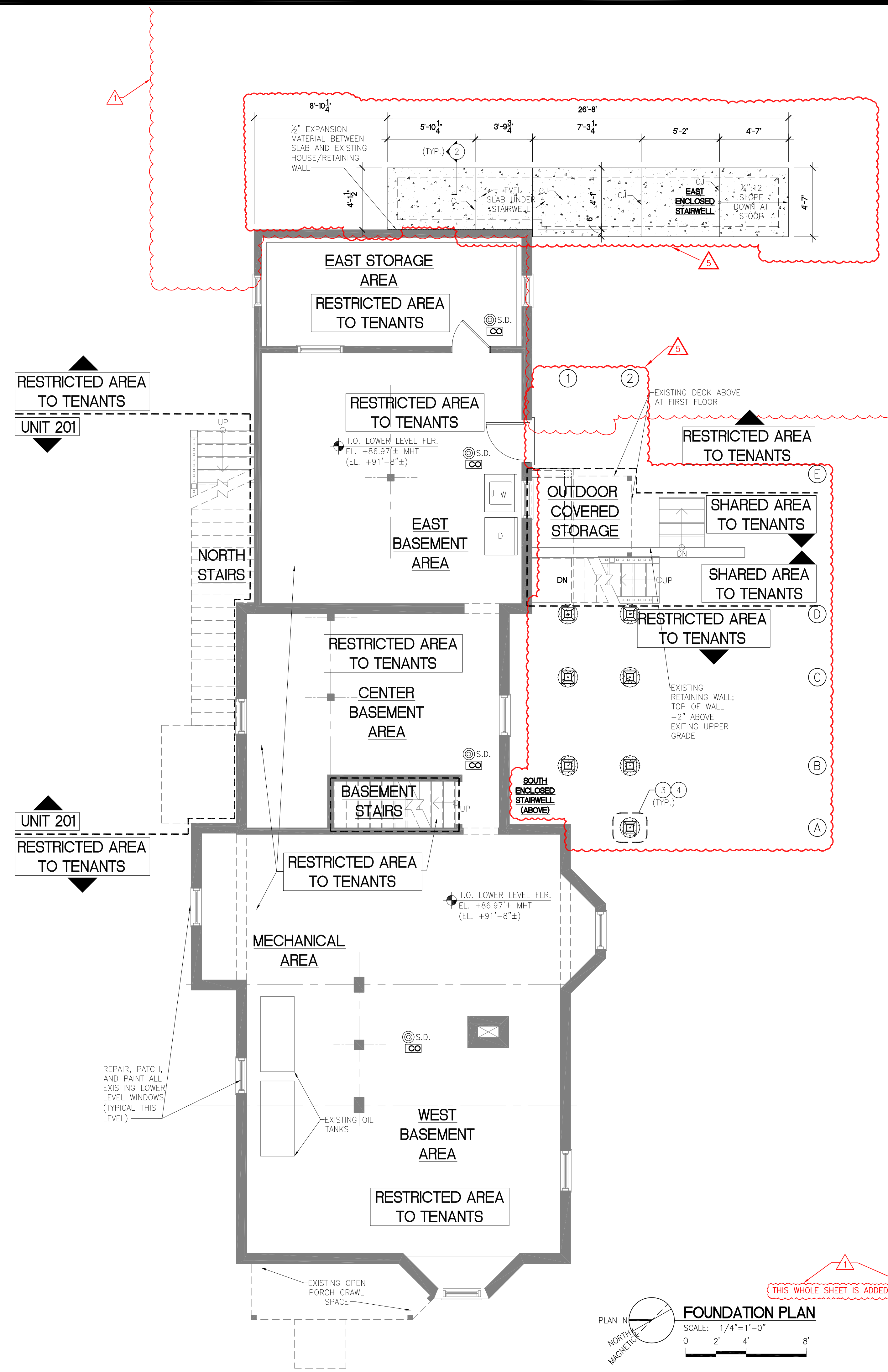
STANDOFF BASES
The PBV is a hidden standoff post base. Two different sizes fit a variety of post shapes.
MATERIAL: 14 gauge galvanized steel
FINISH: Textured powder-coated flat black paint or galvanized
ORDER: For powder-coated flat black, order PBV5PC or PBV10PC. For galvanized coating, order PBV5 or PBV10.
RFI Bolt, SET 1.7 adhesive, and powder-coated PBV, order PBV5KIT or PBV10KIT.
The CPS is a Composite Plastic Standoff designed for increased concrete surface area.
MATERIAL: Engineered composite plastic
INSTALLATION: PBV and CPS
Post:
• Drill a 3/4" diameter hole, 10" into the center of the post.
• Clean out dust. Fill hole halfway with Simpson Strong-Tie® SET Epoxy-Tie® adhesive.
• Insert all-thread rod and allow epoxy to set and cure.
• Secure standoff to post using four 10d nails except PBV which uses four Simpson Strong-Tie SDS screws.
Concrete:
• Drill a 3/4" diameter hole per anchor design (see footnote 2 below).
• Clean out dust. Fill hole halfway with Simpson Strong-Tie SET Epoxy-Tie adhesive. Insert post subassembly into hole and allow epoxy to set and cure.
• Post bases do not provide adequate resistance to prevent members from rotating about the base and therefore are not recommended for non top-supported installations (such as fences or unbraced carports).
CODES: See page 20 for Code Reference Key Chart.



Model No.	Post or Column Size	Dimensions L W H	Fasteners Post Anchor Bolt	Allowable Loads Uplift Down*	Code Ref.
CPS6	6x6	5 1/4" 5 1/4" 1	4-10d 1/2"	4490 7745	170
					18

1 COLUMN BASE PLATE DETAILS
SCALE: NTS

1. Allowable uplift load capacities are for solid sawn posts with specific gravity of 0.36 minimum except the PBV, which is based on round "Viga" (Pinecone Pine) wood posts.
2. All allowable uplift loads are based on a lowest ultimate load from testing divided by a reduction factor of 4. Concrete anchorage to be designed by others, refer to Simpson Strong-Tie® Anchoring and Fastening Systems for Concrete and Masonry catalog (Form C-34S, see page 212 for details). Allowable uplift capacities shall not exceed those shown in the table.
3. Download capacities are calculated based on the standoff bearing area and a concrete strength of 2500 psi except the PBV, which is based on the wood bearing strength (700 psi for Pinecone Pine).
4. Allowable loads may not be increased for short term loading.
5. NAILS: 10d - 1 1/2" dia. x 3" long.
See page 24-26 for other nail sizes and information.



Sheet Notes

- SEE GENERAL NOTES ON COVER SHEET.
- ALL PCOD WAS DONE WITHOUT A BLDG. PERMIT AND IS DOCUMENTED IN THIS SET RETROACTIVELY FOR CITY CEO.
- ALL WORK PREVIOUSLY DONE (WITHOUT BUILDING PERMIT) AFTER CURRENT OWNER IS SHOWN AS NEW WORK EVEN IF IT CURRENTLY EXISTS, PER PORTLAND CODE ENFORCEMENT OFFICE.
- NO ACCESS TO BASEMENT BY TENANTS.

No.	Addenda/Revision	Date
5	REDESIGNED EGRESS	5-8-13
4	CONSTRUCTION CHANGES	3-31-13
3	STAIR NOSING/DETL.	7-19-12
2	SIDE YARD SETBACK	4-4-12
1	ENCLOSED STAIRWELL	3-14-12

ALBALDO ENTERPRISES
92 BROADWAY
ROCKLAND, ME 04841
Tel: (310) 963-7670
Fax: (866) 283-1199
E- MARIO@ALBALDOENTERPRISES.COM

STEVE RUSZKAI, AIA
MAINE LICENSED ARCHITECT
17 POND SHORE DRIVE
CUMBERLAND, ME 04021
(207) 408-9913
SRUSZKAI@MAINE.RR.COM

BAO BAO INVESTMENT, INC.
DEVELOPER:
120 BASTER BLVD.
PORTLAND, ME 04101
Tel: (626) 485-4466
(310) 897-3333
barbecueco@yahoo.com

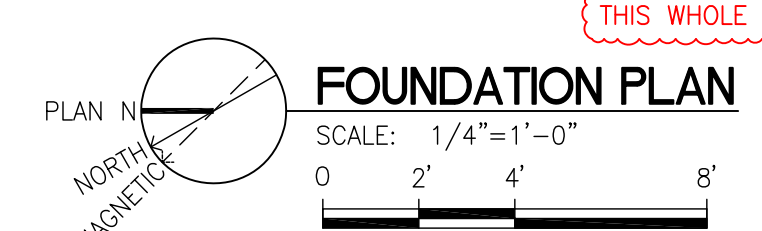
Issued: 15 JULY 2011

Scale: AS NOTED 0 2' 4' 8'

Drawn By: MA & SPR

Reviewed By:

FOUNDATION PLAN & DETAILS
AF-1.0



THIS WHOLE SHEET IS ADDED

AREA RESERVED PER CITY SUBMISSION ROOMS.