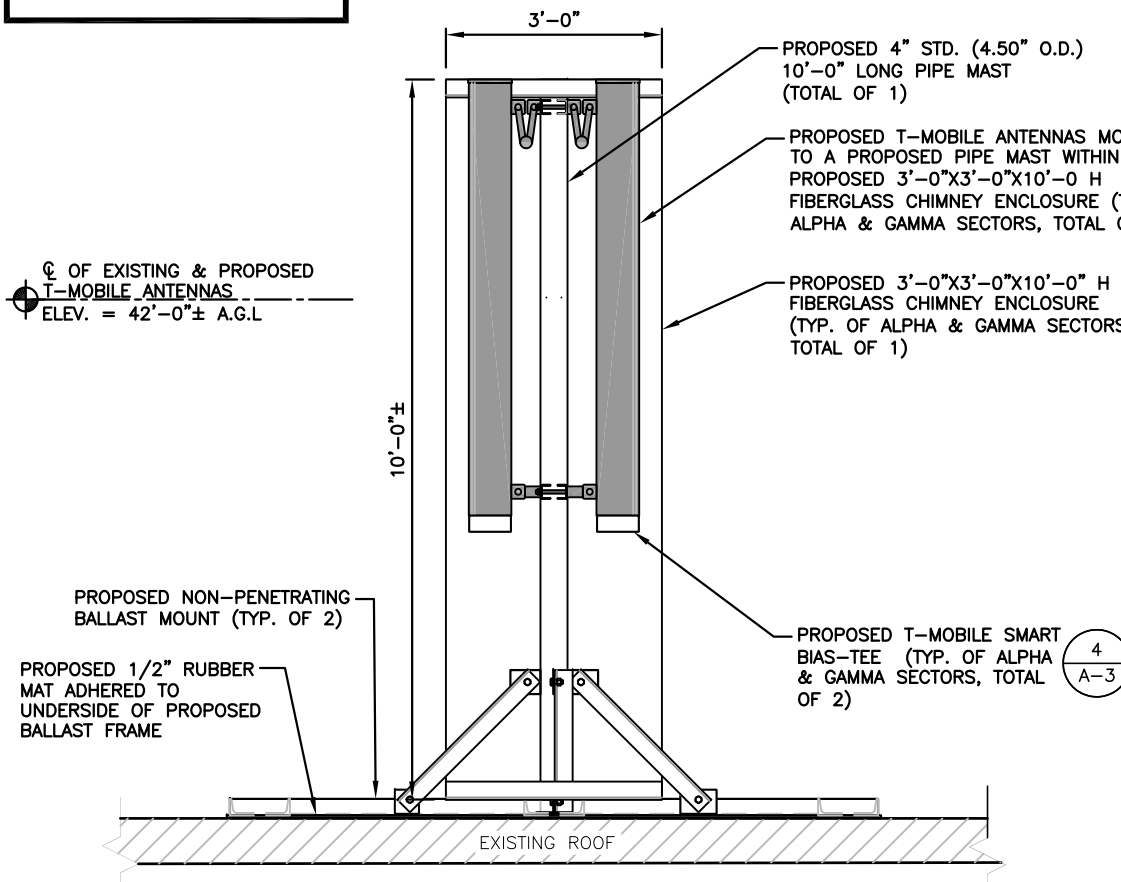


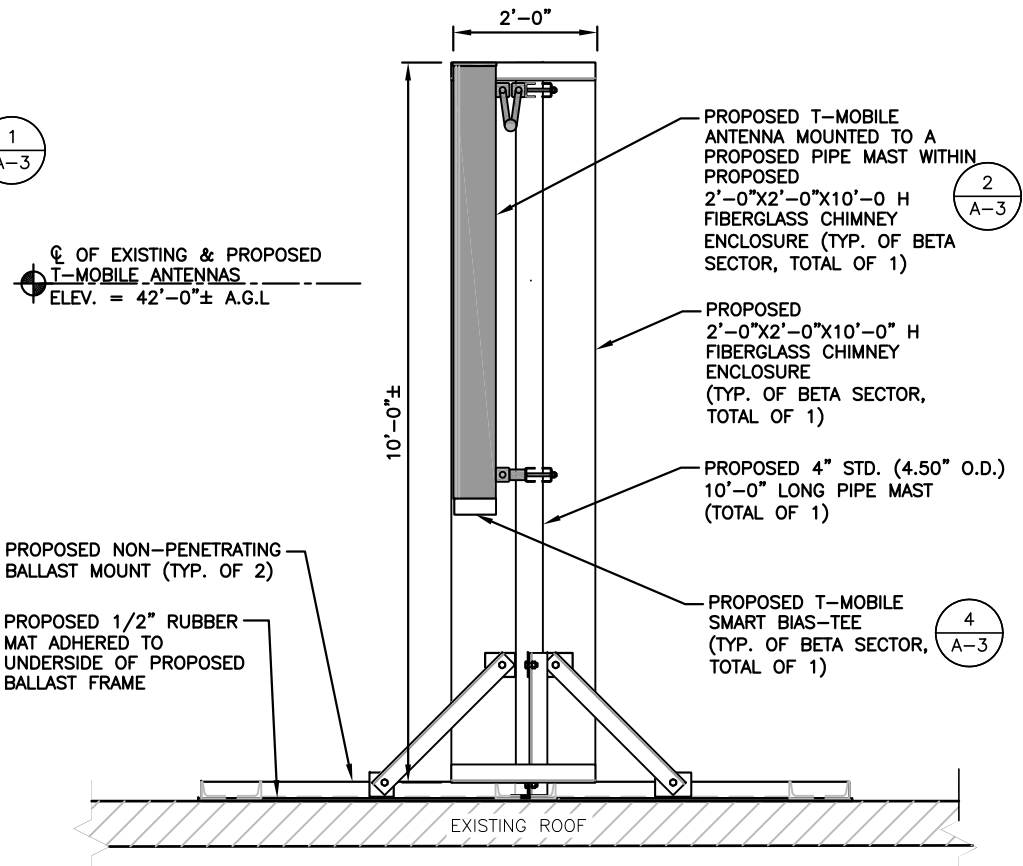
NOTE:
AN ANALYSIS FOR THE CAPACITY OF THE EXISTING STRUCTURES TO SUPPORT THE PROPOSED EQUIPMENT SHALL BE DETERMINED PRIOR TO CONSTRUCTION.

NOTE:
REFER TO THE FINAL RF DATA SHEET FOR FINAL ANTENNA SETTINGS.

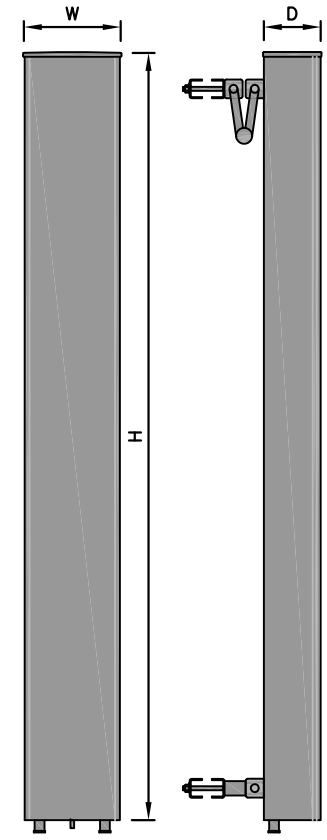
NOTE:
PROPOSED FIBERGLASS CHIMNEY ENCLOSURES TO MATCH EXISTING FAUX BRICK PANELING & FINISH.



PROPOSED L700 ANTENNA MOUNT (TYP. OF ALPHA & GAMMA SECTORS)
22x34 SCALE: 3/4"=1'-0"
11x17 SCALE: 3/8"=1'-0"
GRAPHIC SCALE: 0 8" 1'-4" 2'-8" 4'-0"



PROPOSED L700 ANTENNA MOUNT (TYP. OF BETA SECTOR)
22x34 SCALE: 3/4"=1'-0"
11x17 SCALE: 3/8"=1'-0"
GRAPHIC SCALE: 0 8" 1'-4" 2'-8" 4'-0"



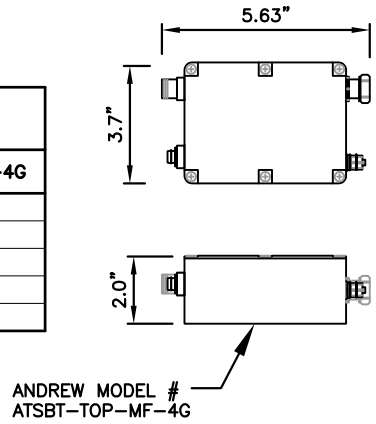
L700 ANTENNA DIMENSIONS

MODEL #	LNx-6514DS-A1M
MANUF.	COMMSCOPE
HEIGHT	72.7"
WIDTH	11.9"
DEPTH	7.1"
WEIGHT	31.3 LBS

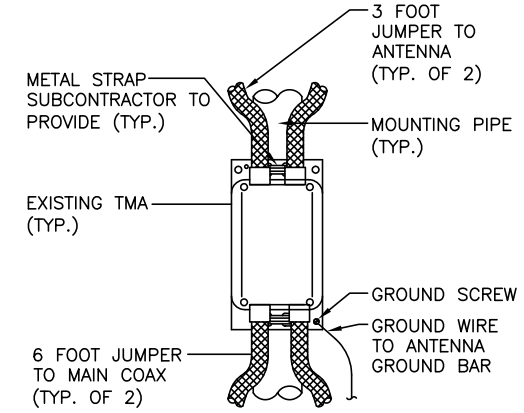
L700 ANTENNA DETAIL
SCALE: N.T.S.

SMART BIAS TEE DIMENSIONS

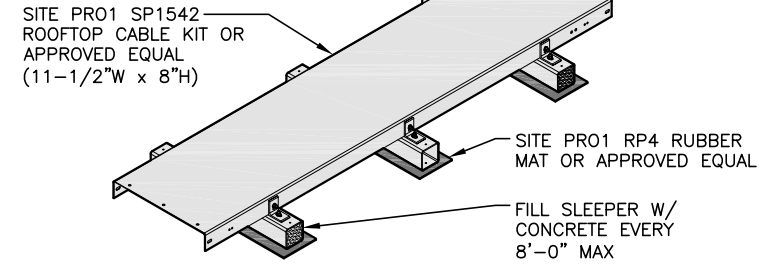
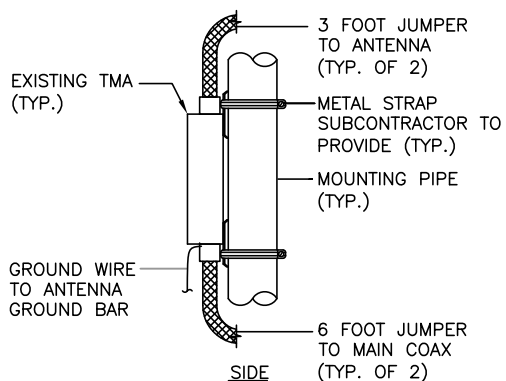
MODEL #	ATSBT-TOP-MF-4G
MANUF.	COMMSCOPE
HEIGHT	5.63"
WIDTH	3.7"
DEPTH	2"
WEIGHT	1.8 LBS



SMART BIAS TEE
SCALE: N.T.S.



TMA MOUNTING DETAIL
SCALE: N.T.S.



CABLE TRAY DETAIL
22x34 SCALE: N.T.S.

T-MOBILE NORTHEAST LLC
15 COMMERCE WAY, SUITE B
NORTON, MA 02766
OFFICE: (508) 286-2700
FAX: (508) 286-2893

smartlink
1997 ANNAPOLIS EXCHANGE PKWY
SUITE 200
ANNAPOLIS, MD 21401

Hudson Design Group LLC
1600 OSGOOD STREET
BUILDING 20 NORTH, SUITE 3090
N. ANDOVER, MA 01845
TEL: (978) 557-5553
FAX: (978) 336-5586

STATE OF MAINE
DEREK J. CREASER
NO. 12752
LICENSED PROFESSIONAL ENGINEER

CHECKED BY: AT
APPROVED BY: DJC

SUBMITTALS

REV.	DATE	DESCRIPTION	BY
1	01/25/16	ISSUED FOR PERMITTING	VP
0	12/15/15	ISSUED FOR REVIEW	VP

SITE NUMBER:
4PB0247A
SITE NAME:
PB247/ROOSEVELT ARMS
SITE ADDRESS:
226 STEVENS AVENUE
PORTLAND, ME 04102
CUMBERLAND COUNTY

SHEET TITLE
EQUIPMENT DETAILS

SHEET NUMBER
A-4