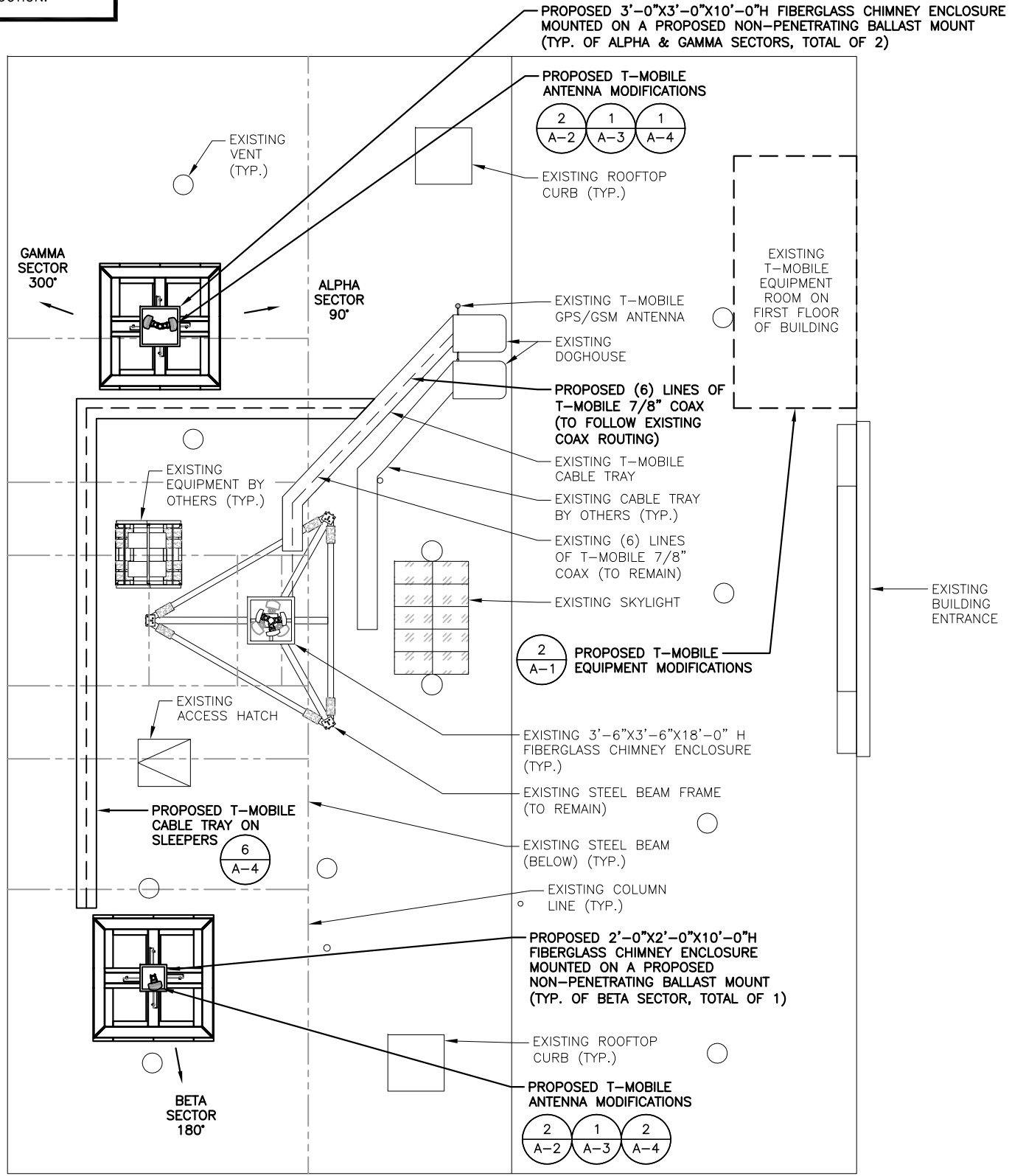


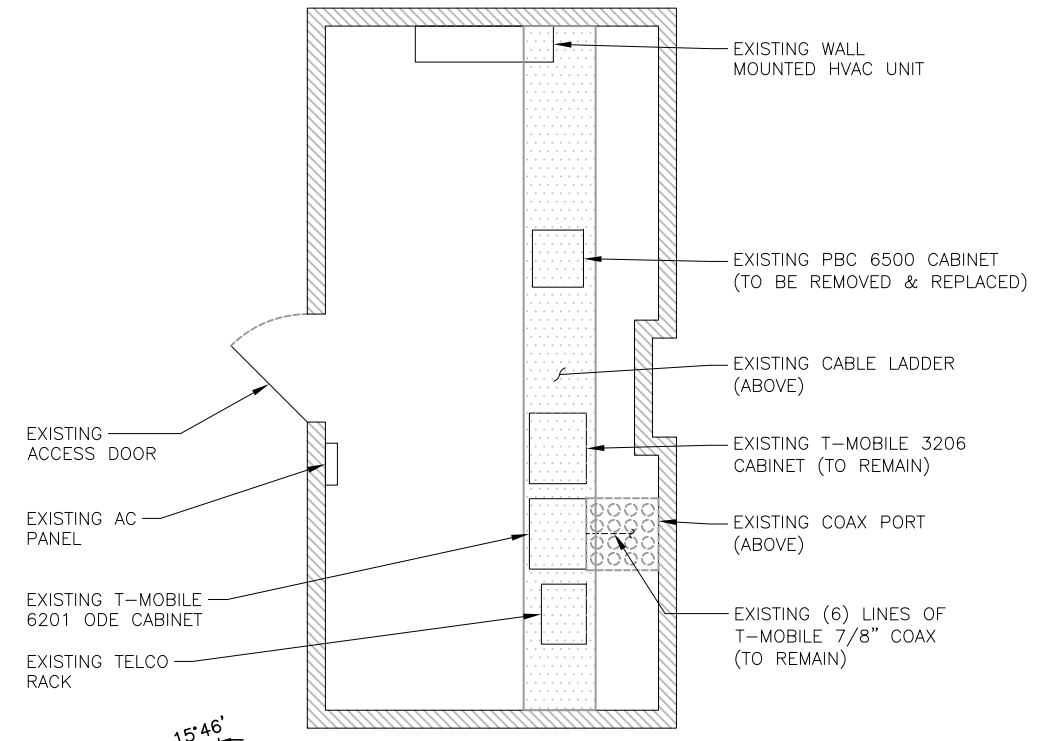
**NOTE:**  
AN ANALYSIS FOR THE CAPACITY OF THE EXISTING STRUCTURES TO SUPPORT THE PROPOSED EQUIPMENT SHALL BE DETERMINED PRIOR TO CONSTRUCTION.

**NOTE:**  
REFER TO THE FINAL RF DATA SHEET FOR FINAL ANTENNA SETTINGS.

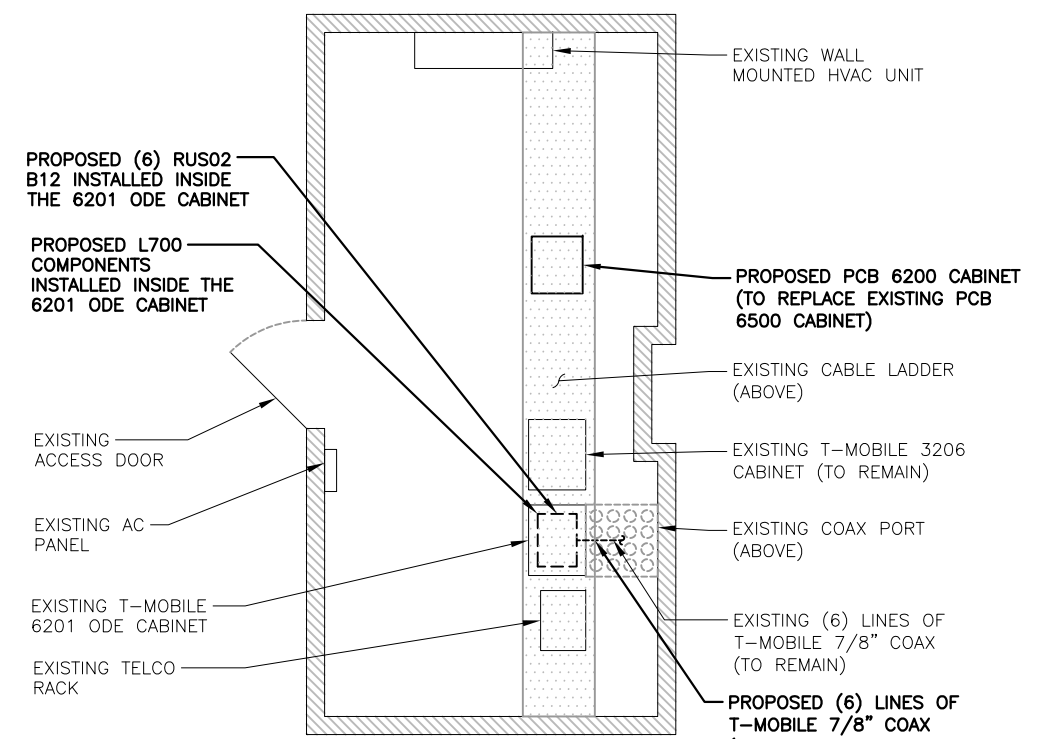
**NOTE:**  
PROPOSED FIBERGLASS CHIMNEY ENCLOSURES TO MATCH EXISTING FAUX BRICK PANELING & FINISH.



**ROOF PLAN**  
 22x34 SCALE: 3/16"=1'-0"  
 11x17 SCALE: 3/32"=1'-0"  
 GRAPHIC SCALE: 0 2'-8" 5'-4" 10'-8" 16'-0"



**EXISTING EQUIPMENT PLAN**  
 22x34 SCALE: 3/8"=1'-0"  
 11x17 SCALE: 3/16"=1'-0"  
 GRAPHIC SCALE: 0 1'-4" 2'-8" 5'-4" 8'-0"

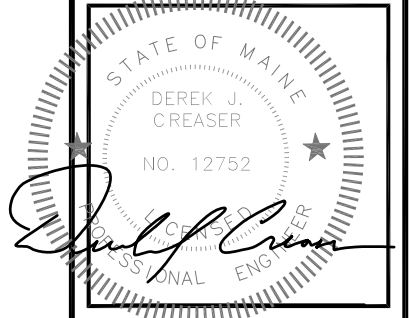


**PROPOSED EQUIPMENT PLAN**  
 22x34 SCALE: 3/8"=1'-0"  
 11x17 SCALE: 3/16"=1'-0"

**T-MOBILE NORTHEAST LLC**  
 15 COMMERCE WAY, SUITE B  
 NORTON, MA 02766  
 OFFICE: (508) 286-2700  
 FAX: (508) 286-2893

**smartlink**  
 1997 ANNAPOLIS EXCHANGE PKWY  
 SUITE 200  
 ANNAPOLIS, MD 21401

**Hudson Design Group LLC**  
 1600 OSGOOD STREET  
 BUILDING 20 NORTH, SUITE 3090  
 N. ANDOVER, MA 01845  
 TEL: (978) 557-5553  
 FAX: (978) 336-5586



CHECKED BY: AT

APPROVED BY: DJC

**SUBMITTALS**

REV.	DATE	DESCRIPTION	BY
1	01/25/16	ISSUED FOR PERMITTING	VP
0	12/15/15	ISSUED FOR REVIEW	VP

SITE NUMBER:  
 4PB0247A  
 SITE NAME:  
 PB247/ROOSEVELT ARMS  
 SITE ADDRESS:  
 226 STEVENS AVENUE  
 PORTLAND, ME 04102  
 CUMBERLAND COUNTY

SHEET TITLE  
 ROOF & EQUIPMENT PLAN

SHEET NUMBER  
**A-1**