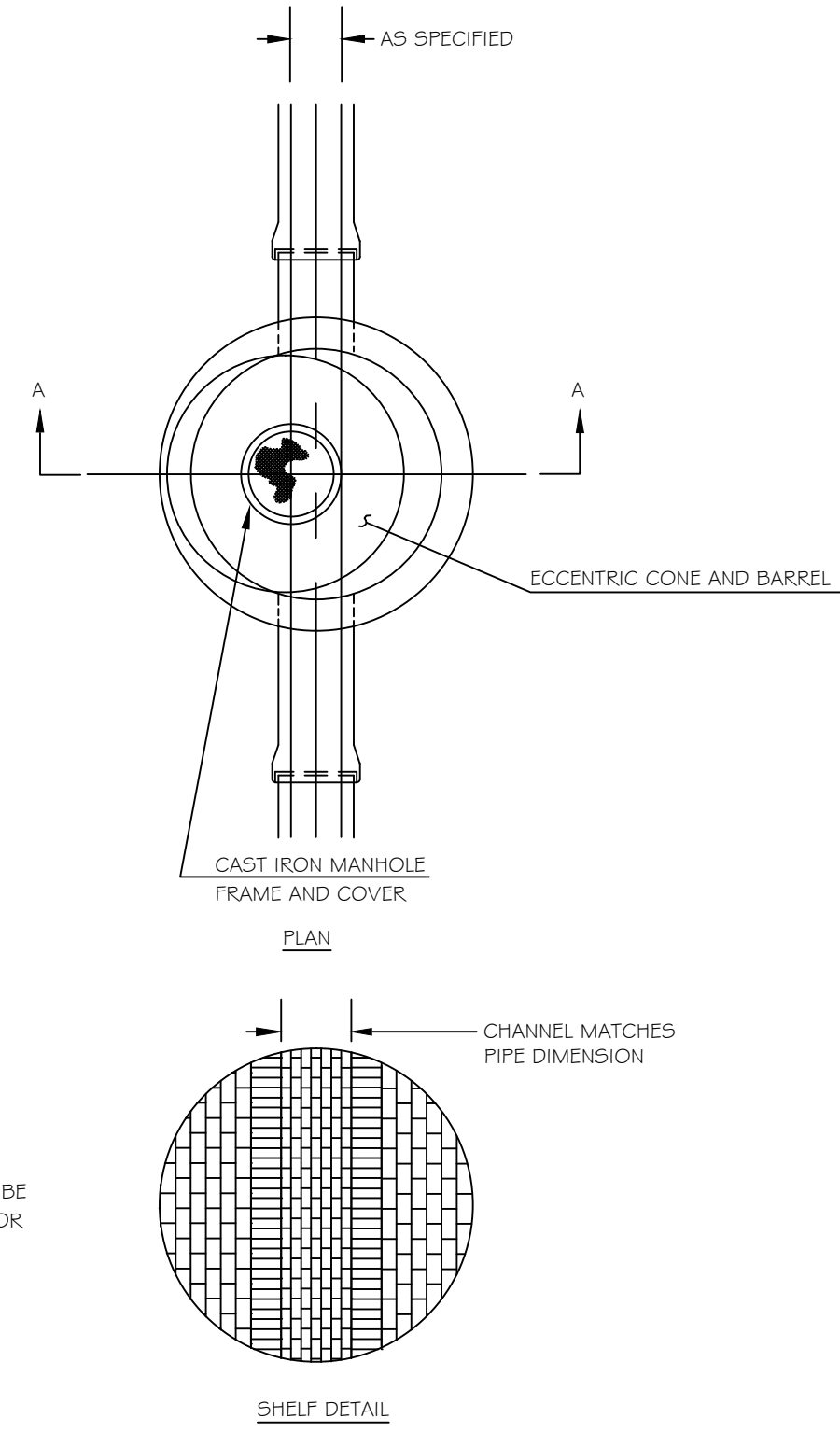
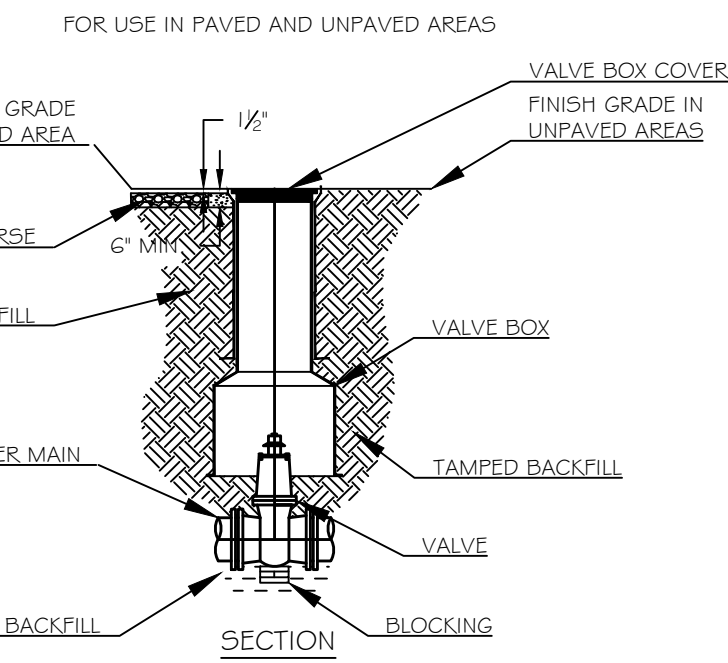


- NOTES:**
1. CONCRETE 4000 PSI AFTER 28 DAYS.
 2. REINFORCING #4 @ 12" O.C. MIN. 8 COURSES MAX. (3 COURSES MIN. 8 COURSES MAX.) CONCRETE RINGS, METAL RINGS, OR RUBBER RINGS AS APPROVED BY ENGINEER.
 3. EACH CASTING TO HAVE LIFTING HOLES TO BE FILLED WITH NON-SHRINK MORTAR.
 4. MANHOLE STEPS TO BE HIGH IMPACT PLASTIC.
 5. APPLY TWO COATS OF BITUMASTIC PAINT ON ALL EXTERIOR SECTIONS.
 6. MANHOLE CHANNELS REQUIRING CHANGE OF ALIGNMENT, TO BE BUILT ON SMOOTH RADIUS. CHANNEL TO BE SHAPED TO ACCEPT ADDITIONAL INLET PIPES.
 7. ALL SANITARY MANHOLE COVERS SHALL HAVE "SEWER" CAST INTO THE COVER.

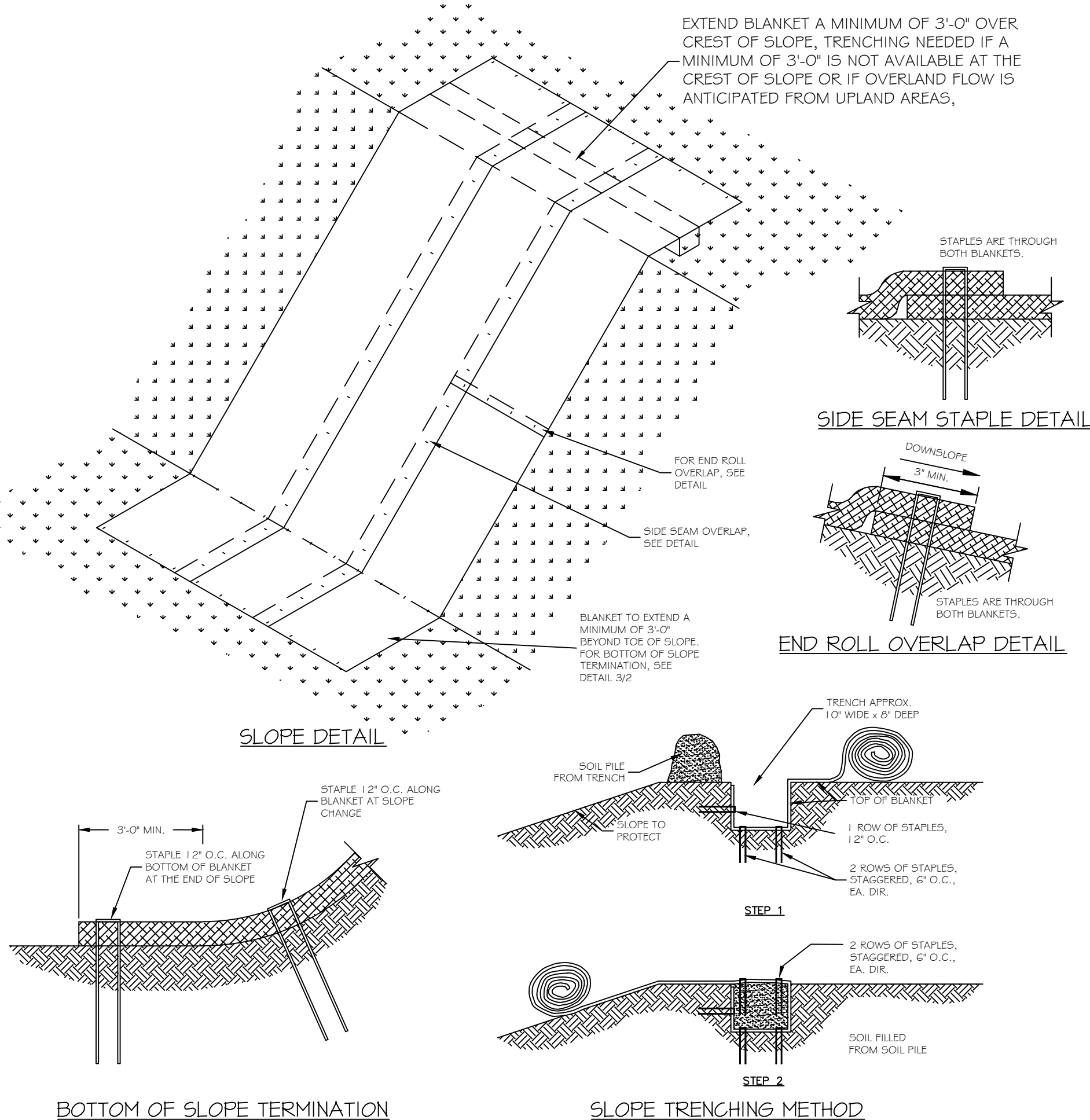
1 TYPICAL SANITARY MANHOLE
C3.2 NOT TO SCALE



2 TYPICAL SEWER CONNECTION DETAIL
C3.2 NOT TO SCALE



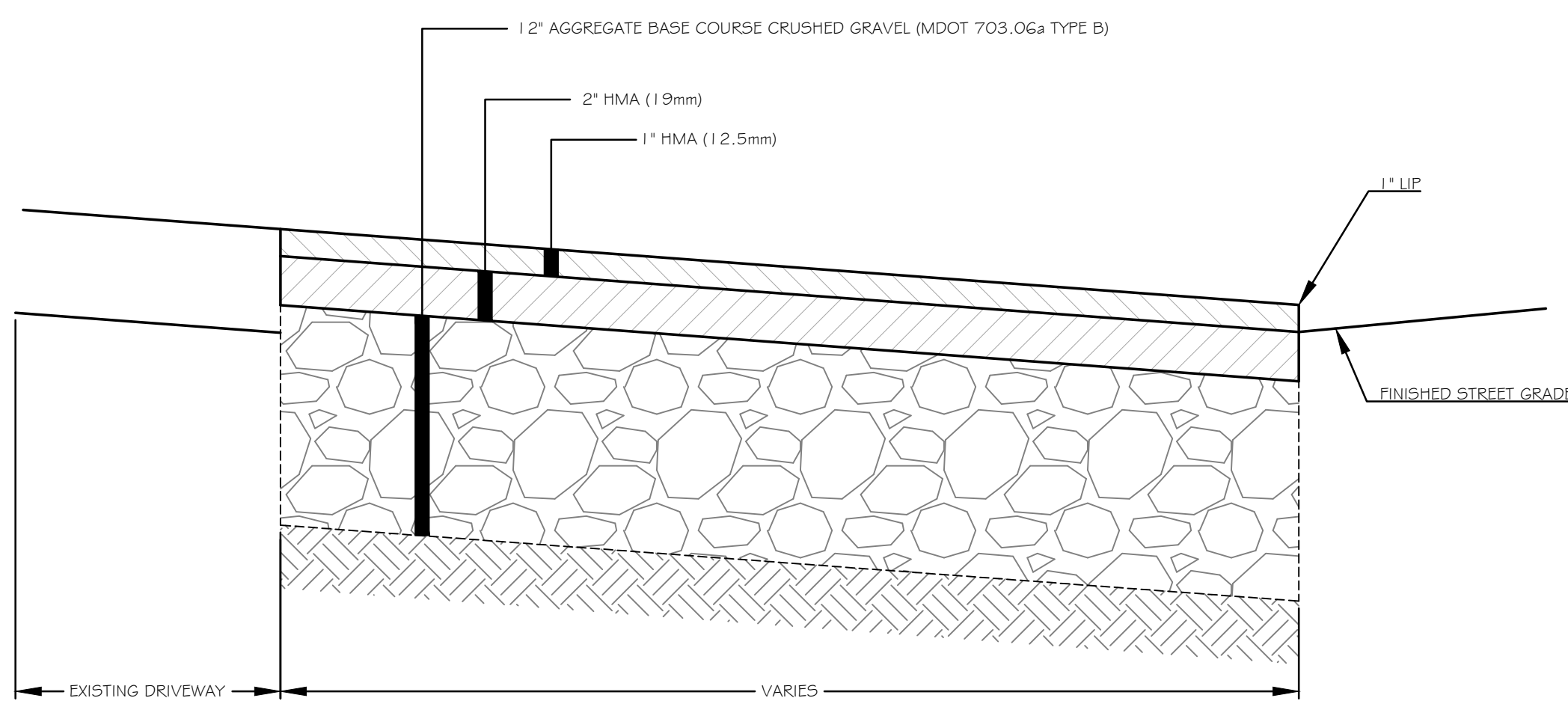
3 STANDARD CORPORATION STOP DETAIL
C3.2 NOT TO SCALE



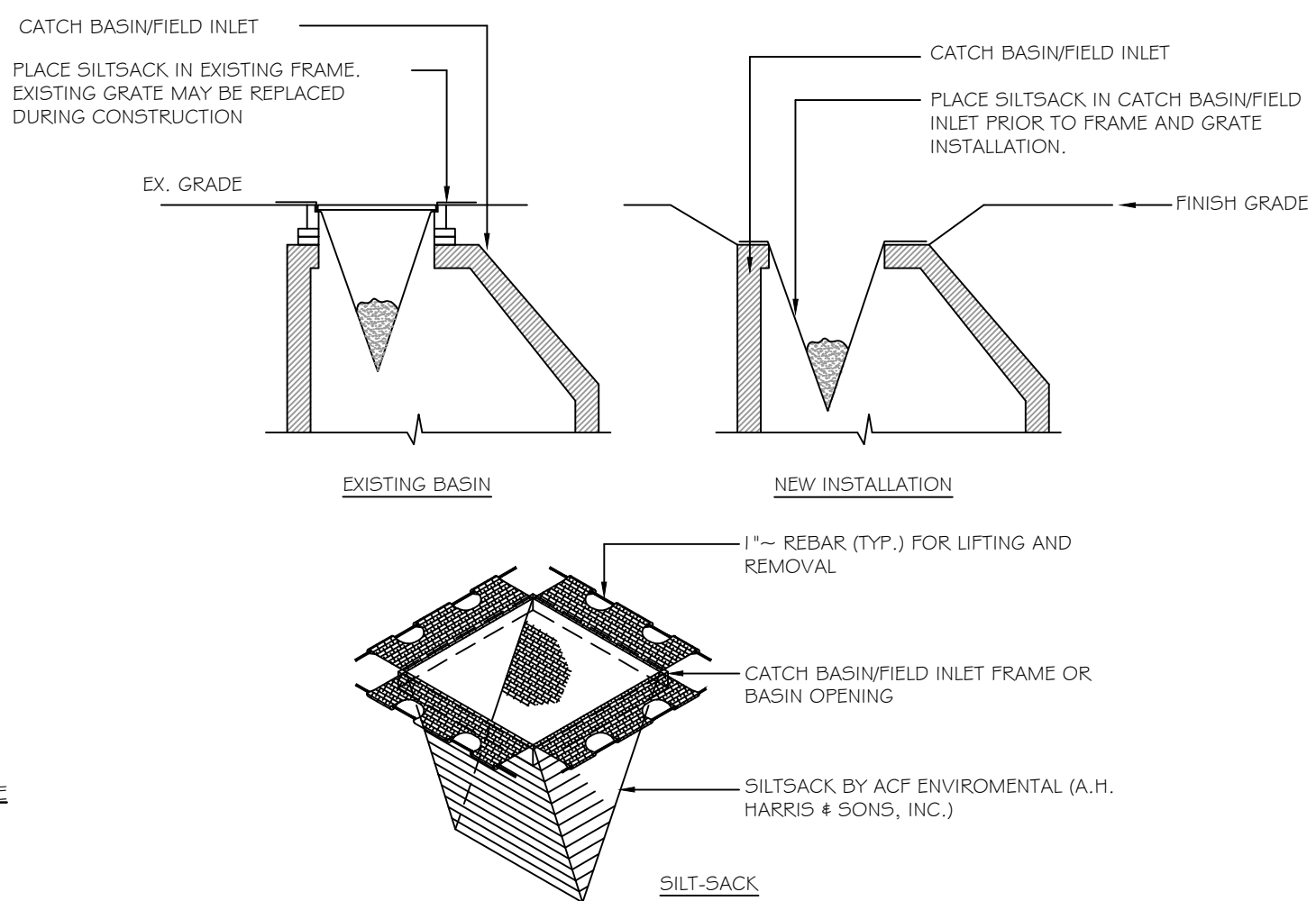
4 STRAW MATTING EROSION CONTROL
C3.2 NOT TO SCALE

- NOTES:**
1. ALL WORK TO CONFORM TO THE PORTLAND WATER DISTRICT STANDARDS AND REQUIREMENTS.
 2. D.I.P. MAY BE USED FOR VALVE BOX EXTENSIONS.
 3. VALVE BOX SHOULD NOT CONTACT WATER MAIN OR VALVE.
 4. CONCRETE PROTECTOR RING SHALL BE USED IN ALL UNPAVED AREAS.

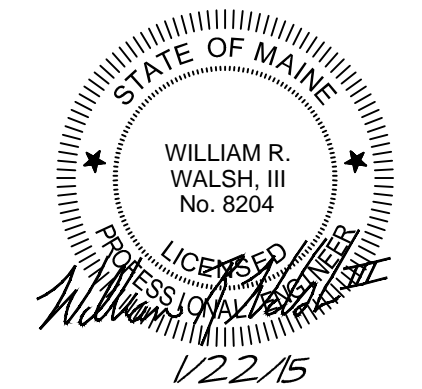
5 VALVE AND VALVE BOX INSTALLATION DETAIL
C3.2 NOT TO SCALE



6 BITUMINOUS DRIVEWAY APRON DETAIL
C3.2 NOT TO SCALE



7 CATCH BASIN PROTECTION DETAIL
C3.1 NOT TO SCALE



MOTLEY STREET EXTENSION
PORTLAND, MAINE
MOTLEY STREET
SKYLINE REAL ESTATE SERVICES, INC
64 MIDDLE STREET
PORTLAND, MAINE 04101

FOR PERMITTING ONLY - NOT FOR CONSTRUCTION

Rev.	Date	Description	Drawn	Check
A	1/8/12	ISSUED FOR SITE PLAN REVIEW	SWC	WRW
B	1/23/13	REVISED PER CITY OF PORTLAND REVIEW COMMENTS	SWC	WRW
C	1/22/15	RE-ISSUED FOR SITE PLAN REVIEW	SWC	WRW

Sheet Title:
SITE DETAILS

Job No.: 173
Date: NOV 9, 2012
Scale: NTS
Drawn: SWC
Checked: WRW

C3.2