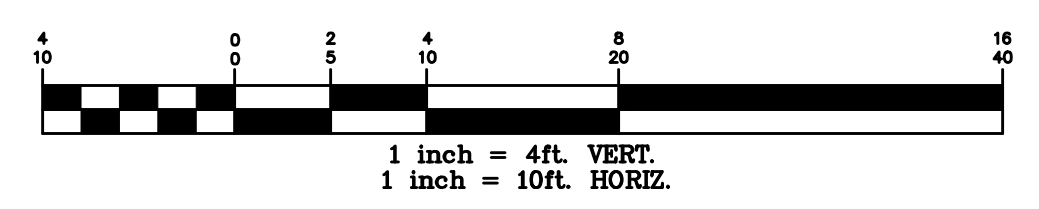
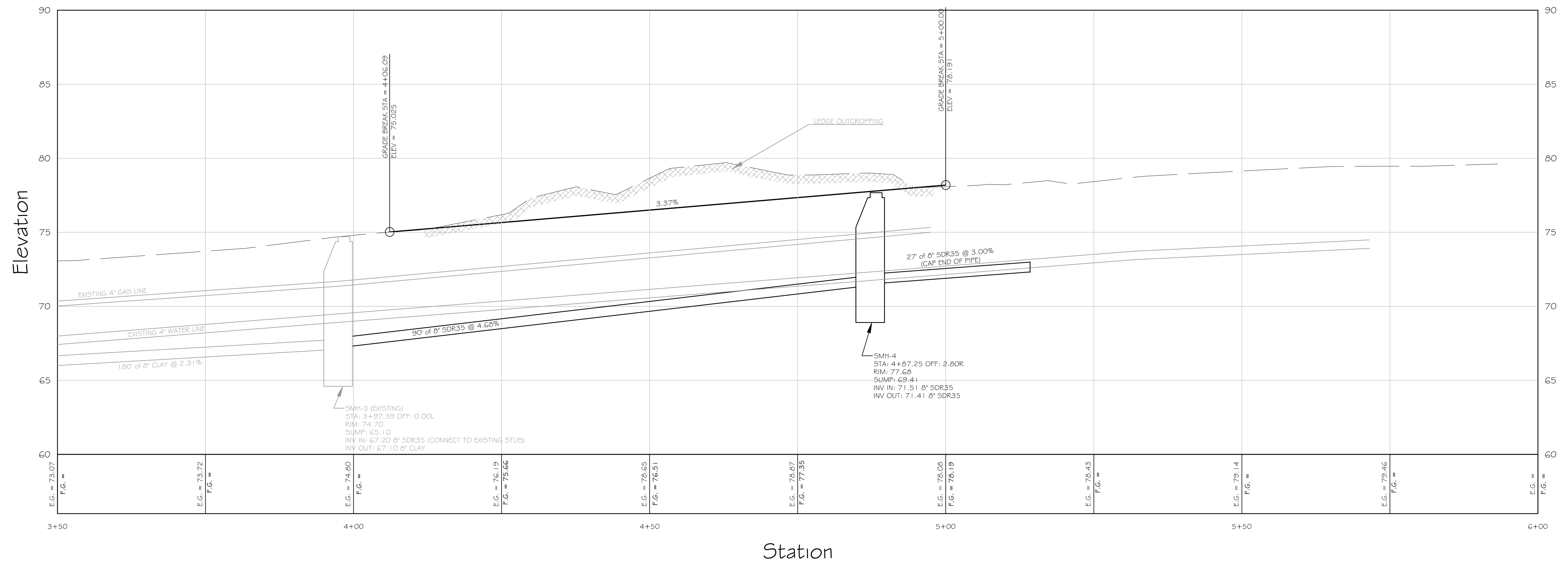
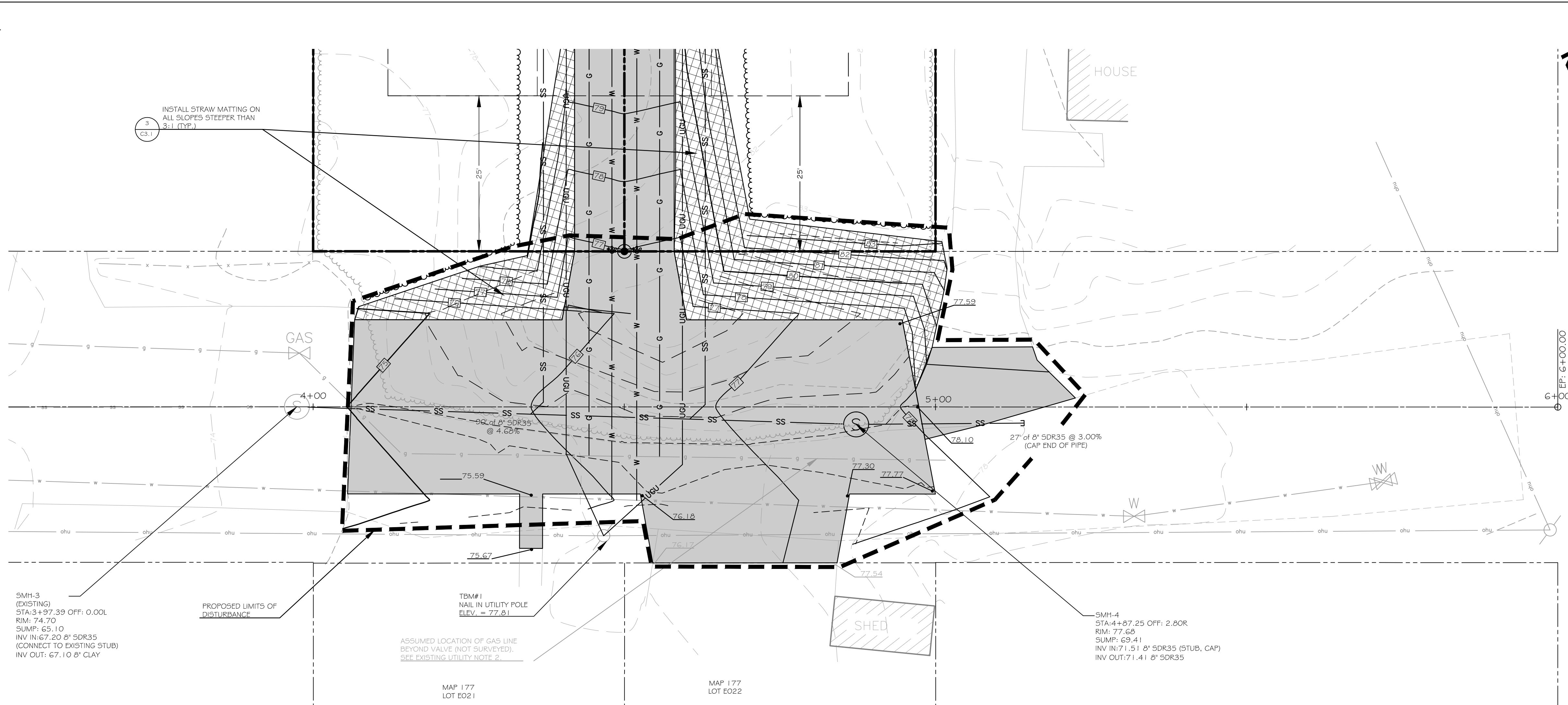


LEGEND

| EXISTING | PROPOSED |
|----------|-----------------------------|
| | PROPERTY LINE |
| | PROPERTY HOOK |
| | ABUTTER LOT LINE |
| | PROPERTY LINE SETBACK |
| | ZONE LINE |
| | NATURAL GAS LINE |
| | SEWER LINE |
| | WATER LINE |
| | OVERHEAD UTILITY LINE |
| | UNDERGROUND UTILITY LINE |
| | EDGE OF PAVEMENT |
| | EDGE OF GRAVEL |
| | CONTOUR LINE |
| | TREELINE |
| | EDGE OF BUILDING |
| | PROPERTY LINE MONUMENTATION |
| | SEWER MANHOLE |
| | CATCH BASIN |
| | WATER VALVE |
| | HYDRANT |
| | GAS VALVE |
| | UTILITY POLE |
| | STRAW MATTING |
| | DETAIL REFERENCE |
| | LIMITS OF DISTURBANCE |

- GENERAL NOTES:**
- SEE GENERAL NOTES, EXISTING UTILITY NOTES, LAYOUT, MATERIALS, AND UTILITY NOTES ON SHEET C2.1 AND SURVEY NOTES ON SHEET C1.0.
 - ELEVATIONS AND CONTOURS ARE BASED ON NAVD88 DATUM. SEE PLAN FOR TBM DESCRIPTION.
- BLASTING NOTES:**
- A BLASTING PERMIT AND ALL ASSOCIATED SUBMITTALS FOR A 'LARGE BLAST' OPERATION (REMOVAL OF GREATER THAN 300 C.Y. OF ROCK MATERIAL) IN ACCORDANCE WITH SECTION 3.7 OF THE CITY OF PORTLAND TECHNICAL MANUAL WILL BE REQUIRED PRIOR TO ANY BLASTING OPERATIONS.



FOR PERMITTING ONLY - NOT FOR CONSTRUCTION

WALSH
ENGINEERING ASSOCIATES, INC.

918 Brighton Ave | Portland, Maine 04102
ph: 207.553.9898 | www.walsh-eng.com

Copyright © 2009

STATE OF MAINE

WILLIAM R. WALSH, III
No. 8204

122/15

Project Name:

MOTLEY STREET EXTENSION

PORTLAND, MAINE
MOTLEY STREET

SKYLINE REAL ESTATE SERVICES, INC

64 MIDDLE STREET
PORTLAND, MAINE 04101

Client Information:

| Rev. | Date | Description | Drawn | Check |
|------|---------|--|-------|-------|
| A | 1/8/12 | ISSUED FOR SITE PLAN REVIEW | SWC | WRW |
| B | 1/24/13 | REVISED PER CITY OF PORTLAND REVIEW COMMENTS | SWC | WRW |
| C | 10/2/15 | REVISED FOR SITE PLAN REVIEW | SWC | WRW |

Sheet Title:
ROADWAY PLAN AND PROFILE

Job No.: 173 Sheet No.:

Date: NOV 9, 2012

Scale: AS NOTED

Drawn: SWC

Checked: WRW

C3.0