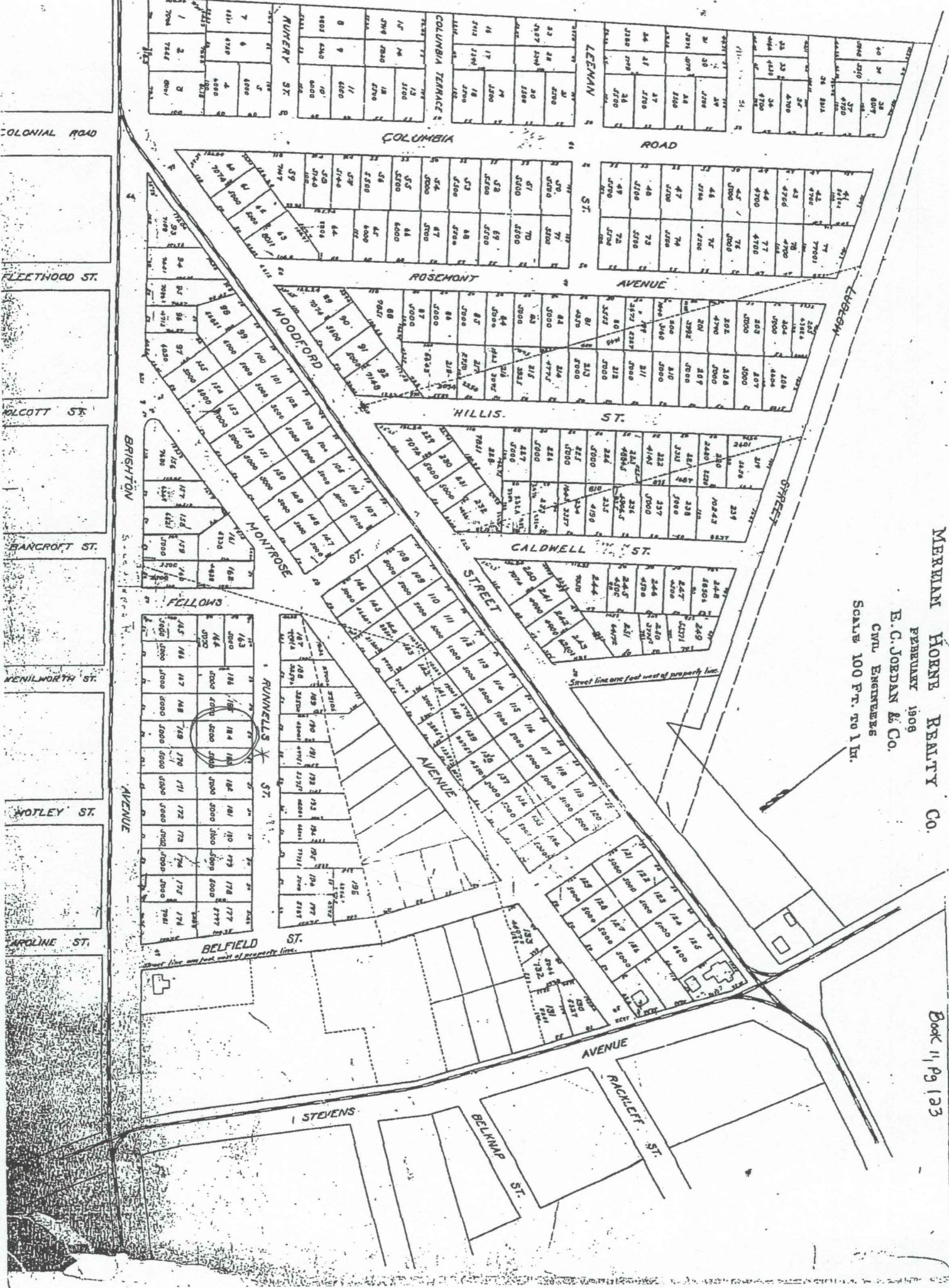


ROSEMONT

MADE FOR
MERRIAM HORNE REALTY CO.
FEBRUARY 1909
E. C. JORDAN & CO.
CIVIL ENGINEERS

SCALE 100 FT. TO 1 IN.



Received May 27, 1909 at 2 1/2 PM
Recorded in Book 11, Page 123
City of Rosemont, Illinois

Book 11, Pg 123