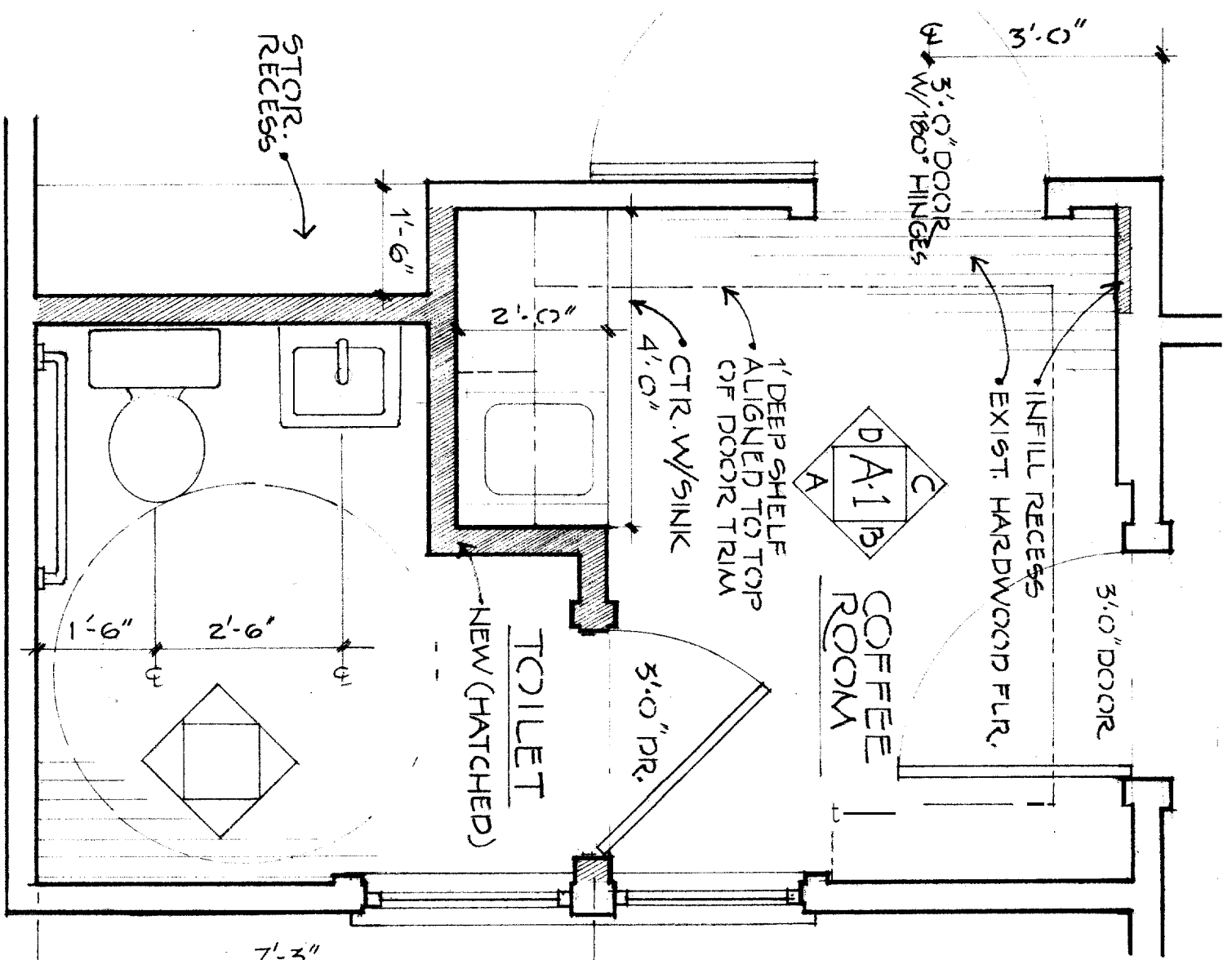


The Portland New Church
 302 Stevens Avenue - Portland, Maine
 Handicapped Bathroom Project

A1

Scale: 1/2" = 1'-0" Date: 4/ / 2006

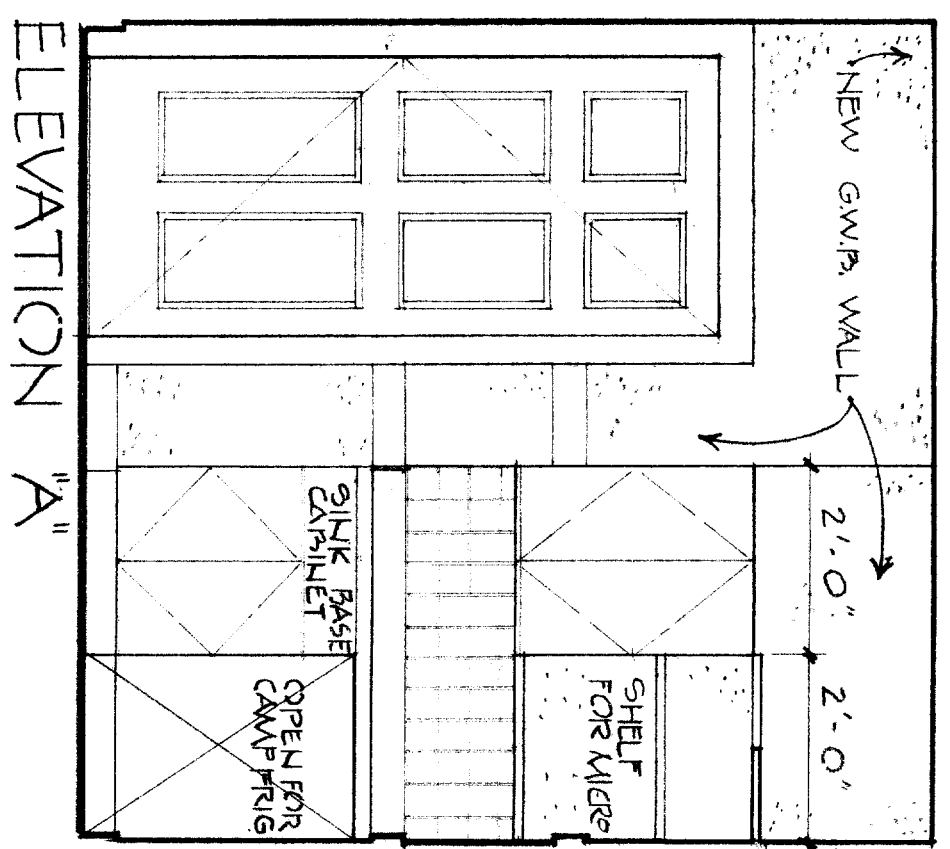


FLOOR PLAN

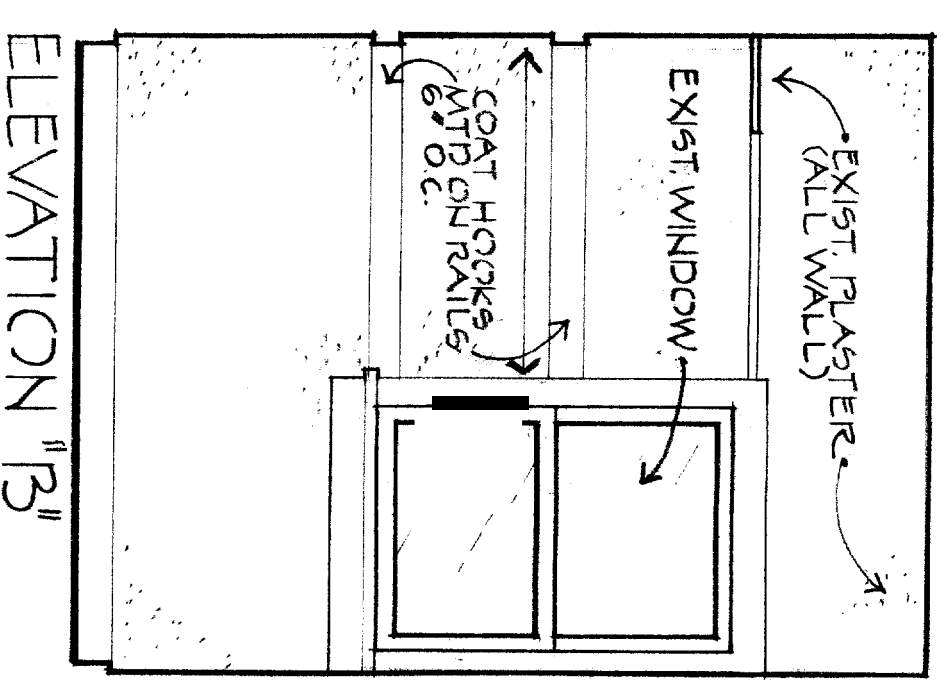


1106 HIGHLAND AVENUE
 SOUTH PORTLAND
 MAINE 04106

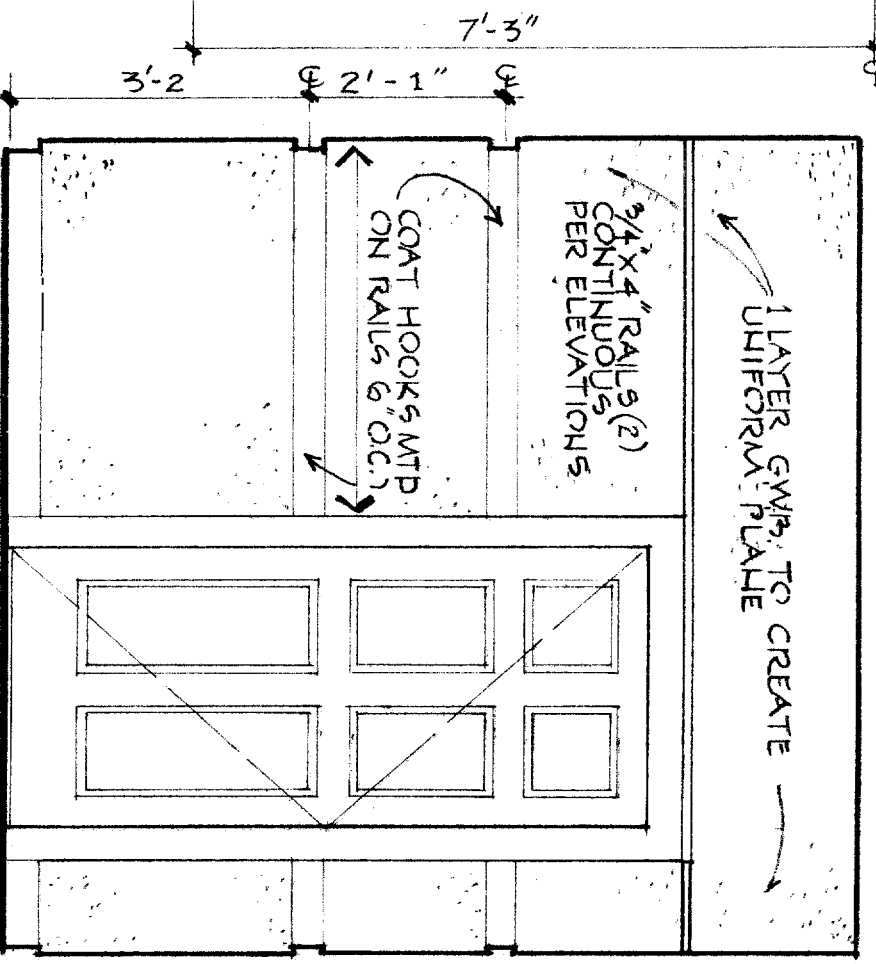
MARK WM. ALLEN



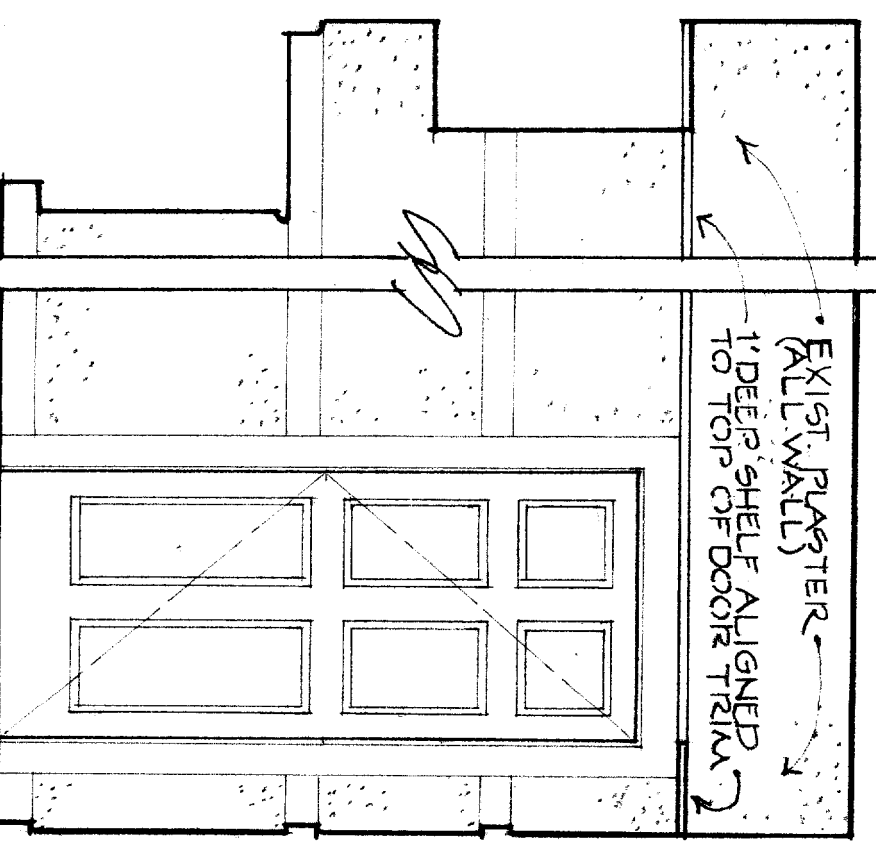
ELEVATION "A"



ELEVATION "B"



ELEVATION "C"



ELEVATION "D"