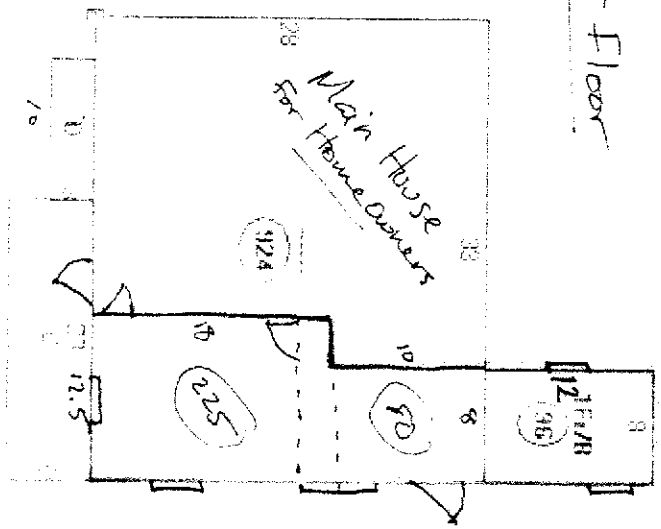


TAX ASSESSOR SKETCH

314 Stevens Ave, Portland

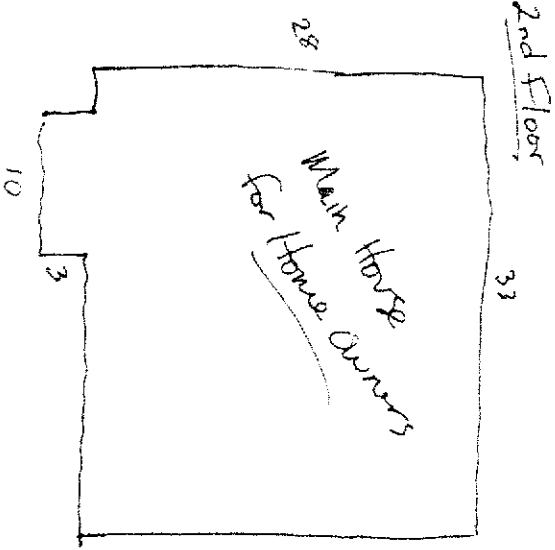
1st Floor

1st Floor Total Ft²
 $28 \times 33 = 924$
 $12 \times 8 = 96$
 $10 \times 3 = 30$
1,050 Ft²



2nd Floor Total Ft²
 $28 \times 33 = 924$ Ft²
 $10 \times 3 = 30$ Ft²
954 Ft²

Total House Ft²
 $1,050$ Ft²
 954 Ft²
2,004 Ft²



Accessory Unit is Highlighted

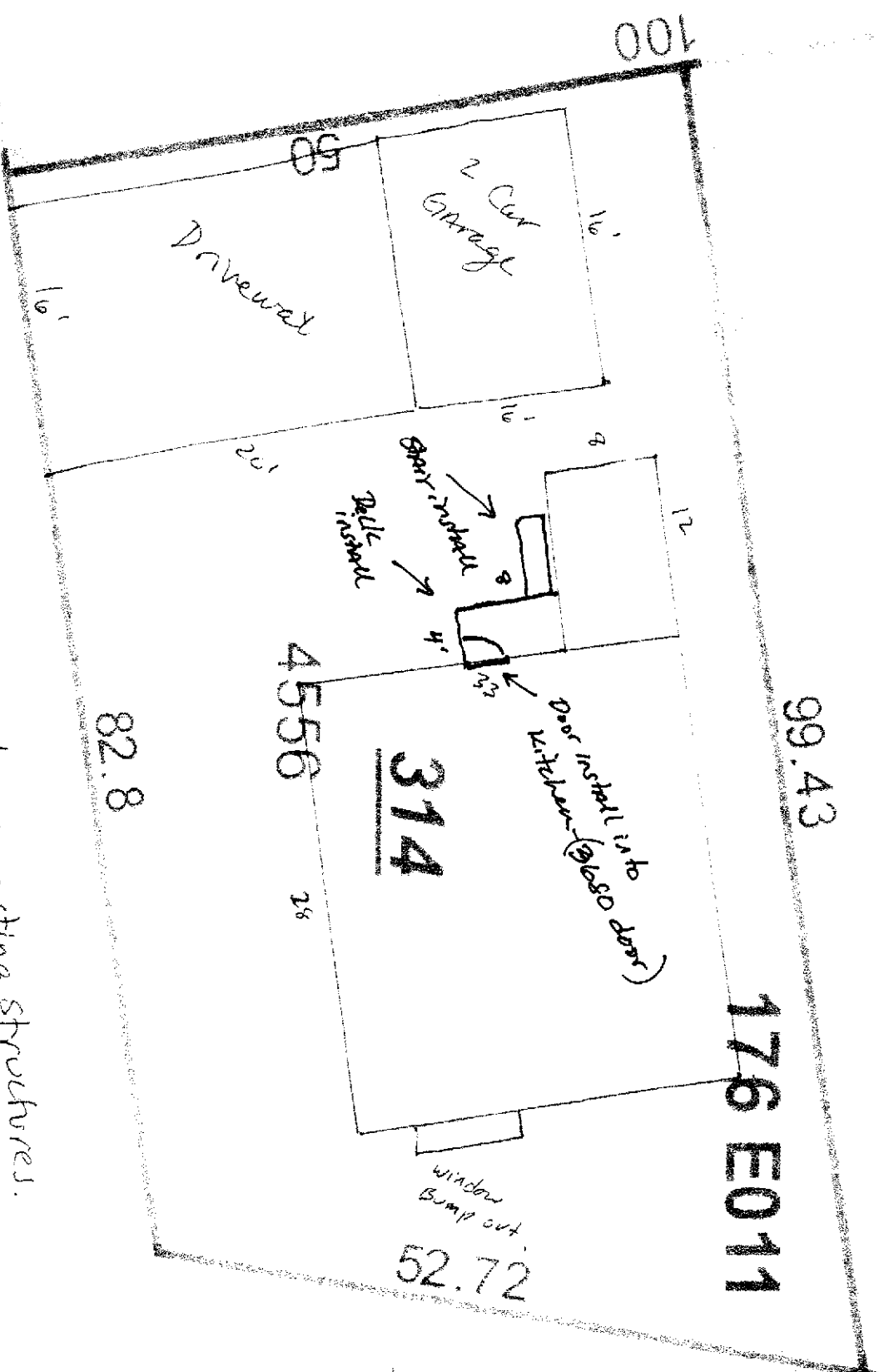
Bathroom = 96 Ft²
 Kitchen = 80 Ft²
 Bedroom/
 Living Room = 225
Total living = 401 Ft²

Zoning/Value	
A	524 sqm
B	576 sqm
C	630 sqm
D	684 sqm
E	738 sqm
F	792 sqm
G	846 sqm
H	900 sqm
I	954 sqm
J	1008 sqm
K	1062 sqm
L	1116 sqm
M	1170 sqm
N	1224 sqm
O	1278 sqm
P	1332 sqm
Q	1386 sqm
R	1440 sqm
S	1494 sqm
T	1548 sqm
U	1602 sqm
V	1656 sqm
W	1710 sqm
X	1764 sqm
Y	1818 sqm
Z	1872 sqm

Existing accessory unit, request to make it legal. No building/ construction is taking place.

Floor Plan

50
 Proposed Deck: ~~53885~~ for main house
 Kitchen leading down to back yard; garage.



PLOT PLAN: All existing structures.

← MONTROSE AVE →

← Stevens Ave →

