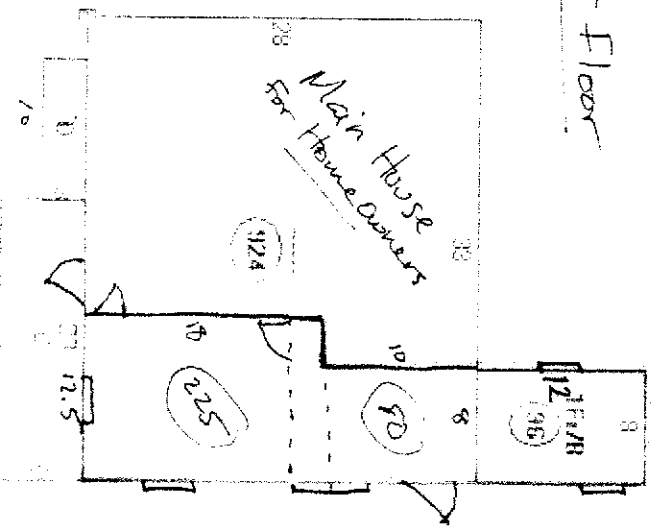


# TAX ASSESSOR SKETCH

314 Stevens Ave, Portland

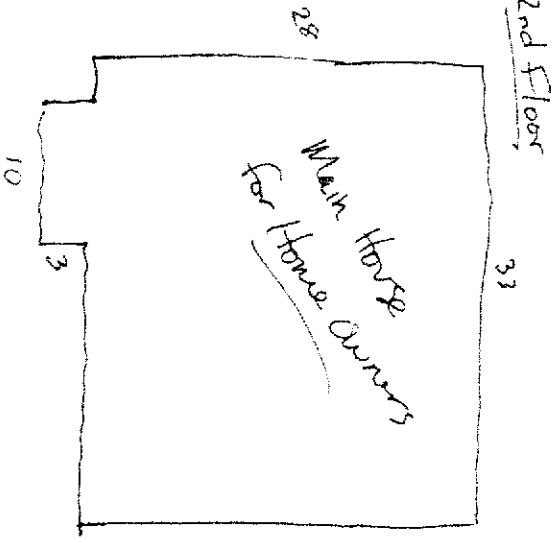
1st Floor

1st Floor Total Ft<sup>2</sup>  
 $28 \times 33 = 924$   
 $12 \times 8 = 96$   
 $10 \times 3 = 30$   
1,050 Ft<sup>2</sup>



2nd Floor Total Ft<sup>2</sup>  
 $28 \times 33 = 924$  Ft<sup>2</sup>  
 $10 \times 3 = 30$  Ft<sup>2</sup>  
954 Ft<sup>2</sup>

Total House Ft<sup>2</sup>  
 $1,050$  Ft<sup>2</sup>  
 $954$  Ft<sup>2</sup>  
2,004 Ft<sup>2</sup>



Accessory Unit is Highlighted

Bathroom = 96 Ft<sup>2</sup>  
 Kitchen = 80 Ft<sup>2</sup>  
 Bedroom/Living Room = 225  
Total living = 401 Ft<sup>2</sup>

~~EXISTING~~ Accessory unit, request to make it legal. No building/ construction is taking place.

Legend	
A	524 sqm
B	576 sqm
C	6 sqm
D	20 sqm
E	18 sqm
F	20 sqm
G	180 sqm

Floor Plan