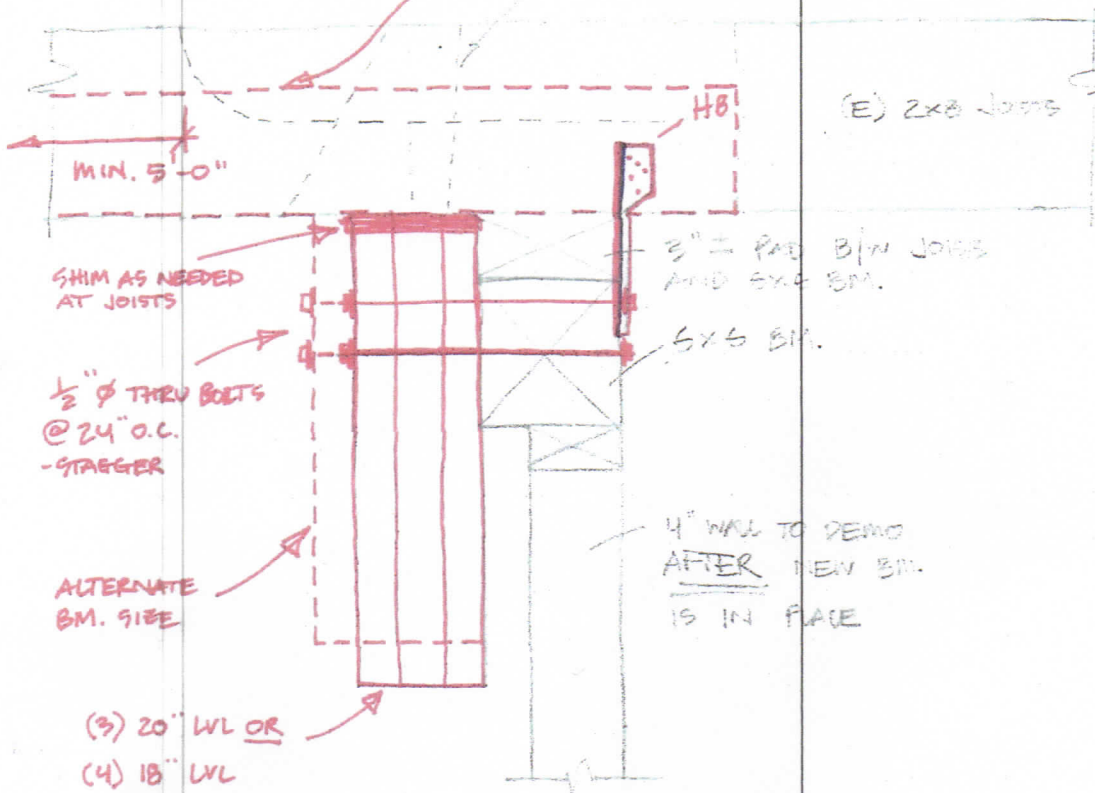


77 Oak Street, Portland, ME 04101 | p. 207-774-4614 | f. 866-793-7835

9/16" (N) 2x6 @ (E) NOTCHED JOISTS, MINIMUM LENGTH OF 5' BEYOND NOTCH. FASTEN W/ 10d @ 8" O.C., STAGGERED

■ = NEW CONSTRUCTION

(E) JOISTS OVERLAPPED @ VARIOUS LENGTHS



①

52