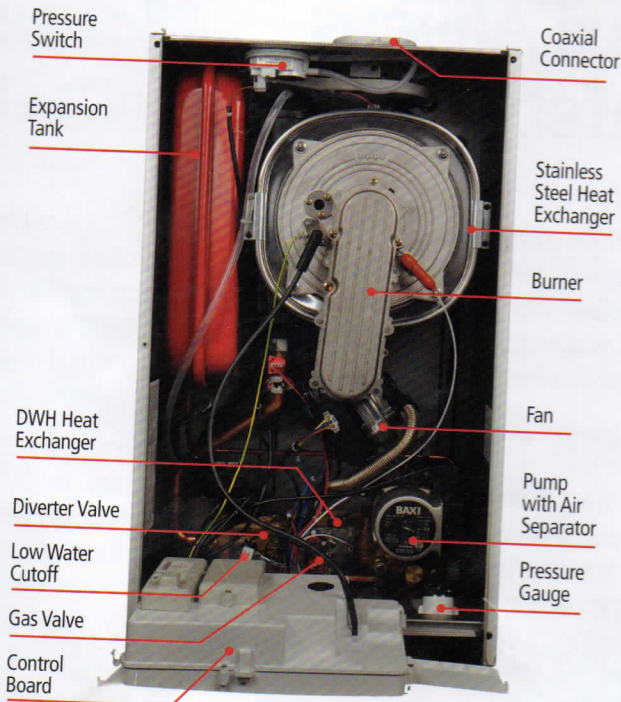


Built-In Value Added



Baxi Luna Duo-Tec is a high efficiency modulating, condensing wallhung boiler with multiple built-in safety and performance enhancing components.

- ◆ 7:1 turndown ratio (134,000 to 18,000 BTU/hr) enhances versatility and efficiency
- ◆ Automatic gas-adaptive and self-calibrating functions enhance combustion efficiency and lower fuel bills
- ◆ Two-speed modulating pump with built-in air vent generates up to 40% reduction in electrical use annually
- ◆ Stainless steel AISI 318 pre-mixing burner and heat exchanger (10-year warranty) assures longevity
- ◆ Stainless steel enhanced secondary heat exchanger (combi model) ensures condensation in domestic hot water mode
- ◆ Controller with large backlit digital display on front of boiler makes it easy to set up and service
- ◆ Pre-heat function helps eliminate cold water sandwich
- ◆ Ability to accept and increase heating of pre-heated solar water
- ◆ Frost protection, as well as pump and diverter valve seize prevention
- ◆ Approved for closet installation, saving valuable living space
- ◆ Ask a Baxi certified contractor about other built-in performance and safety features including high limit sensors, low water cut-off, shut off valves, pressure relief valve, system pressure gauge, expansion tank and auto bypass.

Baxi Luna High Efficiency Technical Notes	Baxi Luna Duo-Tec Residential Models		Baxi Luna HT Commercial Models			
	40 GA	1.33 GA	1.45	1.65	1.100	
Rated heat input	BTU/hr	153,864	125,908	167,262	241,600	379,127
Reduced heat input	BTU/hr	21,838	21,838	55,618	73,361	112,980
Rated heat output	BTU/hr	136,486	136,486	153,546	221,789	348,039
Reduced heat output	BTU/hr	19,108	19,108	52,058	69,326	106,766
Sealed combustion chamber		yes	yes	yes	yes	yes
Ignition		electronic	electronic	electronic	electronic	electronic
Anti-frost device on heating circuit		yes	yes	yes	yes	yes
Maximum pressure on heating circuit	psi	43	43	30	30	30
Regulation of heating circuit water temperature	- high temp	°F/°C	176/80	176/80	86/180	86/180
	- low temp	°F/°C	113/40	113/40	86/180	86/180
Dimensions:	Height	in	30.04	30.04	37.40	37.40
	Width	in	17.71	17.71	23.62	23.62
	Depth	in	13.58	13.58	18.35	18.35
	Coaxial/Dual flue tube	in/mm	2.36-3.93/60-100	2.36-3.93/60-100	3.15-4.92/3.15	3.15-4.92/3.15
Net weight	lbs	102	102	141	158	215
Gas type		NG/LP	NG/LP	NG/LP	NG/LP	NG/LP



Marathon International
 Exclusive North American Distributor for Baxi Products
 1815 Sismet Road, Mississauga
 Ontario L4W 1P9, Canada
 info@wallhungboilers.com

Baxi is ISO 9001 certified for quality management, OHSAS 18001 for health and safety management and ISO 14001 for environmental management.

The Company assumes no responsibility for any possible contents mistakes, and reserves the right to make changes in products, due to technical or commercial demands, at any time without notice.

