

TOWER ELEVATION
SCALE: 1" = 30'

SHEET NO.	DESCRIPTION	DATE	REV. NO.
C-1	TOWER ELEVATION	5/26/11	0
C-2	ROOF PLAN	5/26/11	0
C-3	HATCH PLATE, ICE BRIDGE DETAILS AND COAX LAYOUT	5/26/11	0
C-4	ANTENNA MOUNT DETAILS	5/26/11	0
C-5	EQUIPMENT FLOOR PLAN AND ELEVATIONS	5/26/11	0
C-6	ERICSSON RIU DETAIL	5/26/11	0
E-1	GROUNDING DETAILS	5/26/11	0

SHEET INDEX

ANTENNA	MODEL #	MOUNTING HEIGHT	COAX SIZE
1	(3) RR65-18-VDPL2-R	107'±	7/8"
2	20'x3" OMNI WHIP	111.5'±	1/2"

EXISTING ANTENNA TABLE

- NOTES:
1. CONTRACTOR PLEASE REFER TO ANTENNA MAPPING AND STRUCTURAL ANALYSIS PERFORMED BY B&T ENGINEERING, INC. DATED 5-5-11 FOR DETAILS.
 2. CONTRACTOR PLEASE REFER TO THE CONCLUSIONS AND RECOMMENDATIONS FOR TOWER MODIFICATION DESIGN BY B&T ENGINEERING, INC.

PLANS PREPARED FOR:

U S Cellular
We connect with you
10 Corporate Drive, Suite 210, Bedford, NH 03110

PROJECT INFORMATION

853418 - ROSEMONT
370 STEVEN AVE
PORTLAND, ME 04103
(CUMBERLAND COUNTY)

PLANS PREPARED BY:

amec
343 Gorham Road, South Portland ME 04106
P: (207) 761-1770 F: (207) 774-1246 www.amec.com

PROJECT COORDINATION & MANAGEMENT:

KJK Wireless, LLC
127 Ridge Road, Nashua, NH 03062
Phone: (603) 888-8974

SEAL

MICHAEL S. DELETETSKY
No. 5023
LICENSED PROFESSIONAL ENGINEER
26 MAY 2011

REV	DATE	ISSUED FOR
Δ	5/26/11	ISSUED FOR CONSTRUCTION

PROJECT NO: 413.46.03

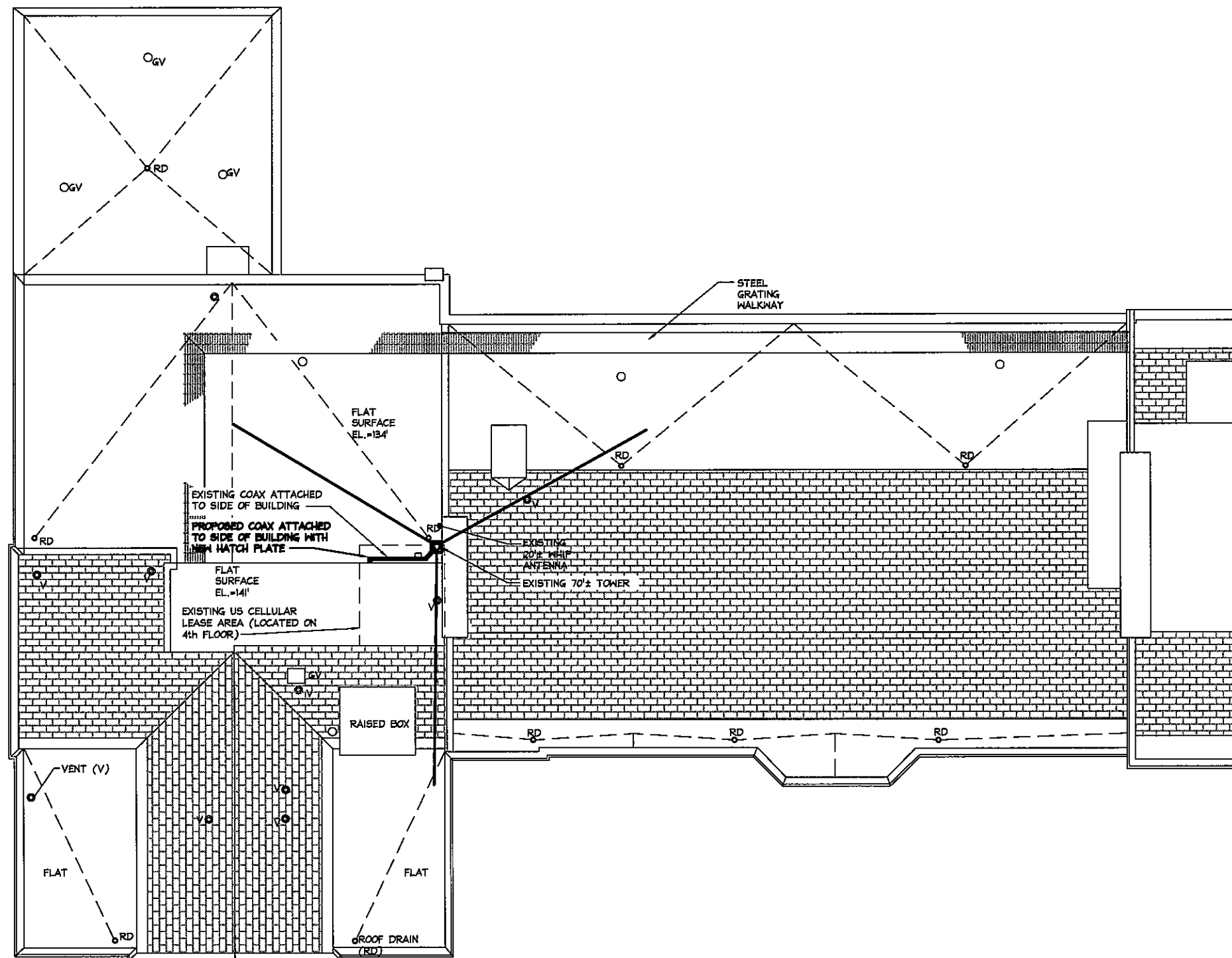
DRAWN BY: CBM

RELEASED BY: MSD

SHEET TITLE

TOWER ELEVATION

SHEET NUMBER	REVISION:
C-1	0



ROOF PLAN
SCALE: N.T.S.

PLANS PREPARED FOR:

U S Cellular
We connect with you
10 Corporate Drive, Suite 210, Bedford, NH 03110

PROJECT INFORMATION

853418 - ROSEMONT

370 STEVEN AVE
PORTLAND, ME 04103
(CUMBERLAND COUNTY)

PLANS PREPARED BY:

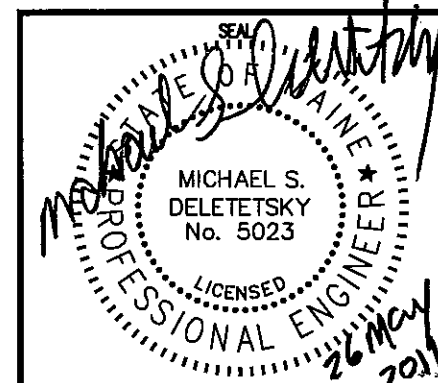
amec

343 Gorham Road, South Portland ME 04106
P: (207) 761-1770 F: (207) 774-1246 www.amec.com

PROJECT COORDINATION & MANAGEMENT:

KJK Wireless, LLC

127 Ridge Road, Nashua, NH 03062
Phone: (603) 888-8974



REV	DATE	ISSUED FOR
1	5/26/11	ISSUED FOR CONSTRUCTION

PROJECT NO: 413.46.03

DRAWN BY: CBM

RELEASED BY: MSD

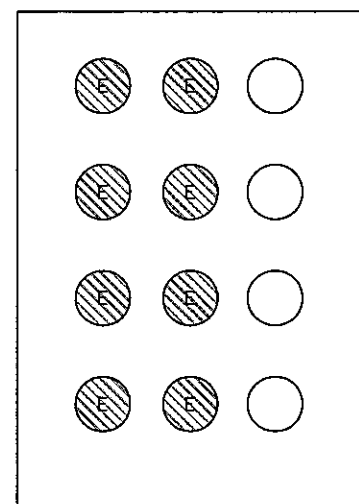
SHEET TITLE
**COMPOUND
DETAIL**

SHEET NUMBER

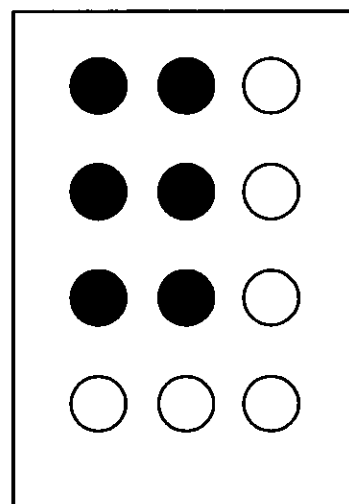
C-2

REVISION:

0



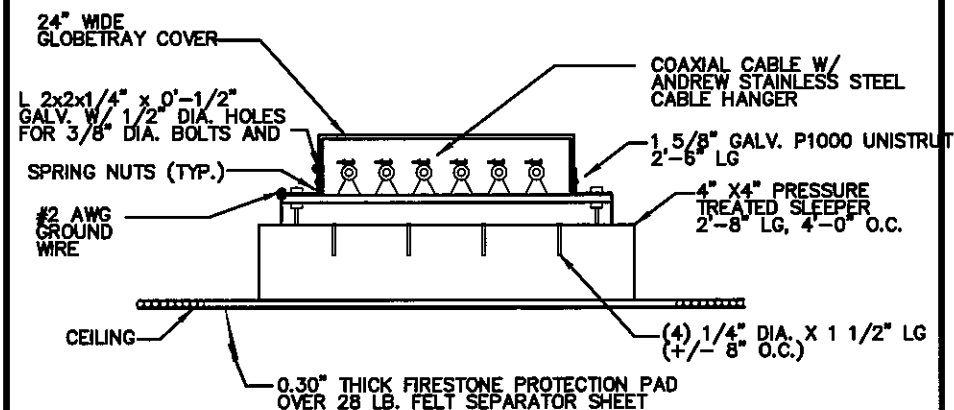
EXISTING HATCH PLATE



PROPOSED HATCH PLATE

HATCH PLATE

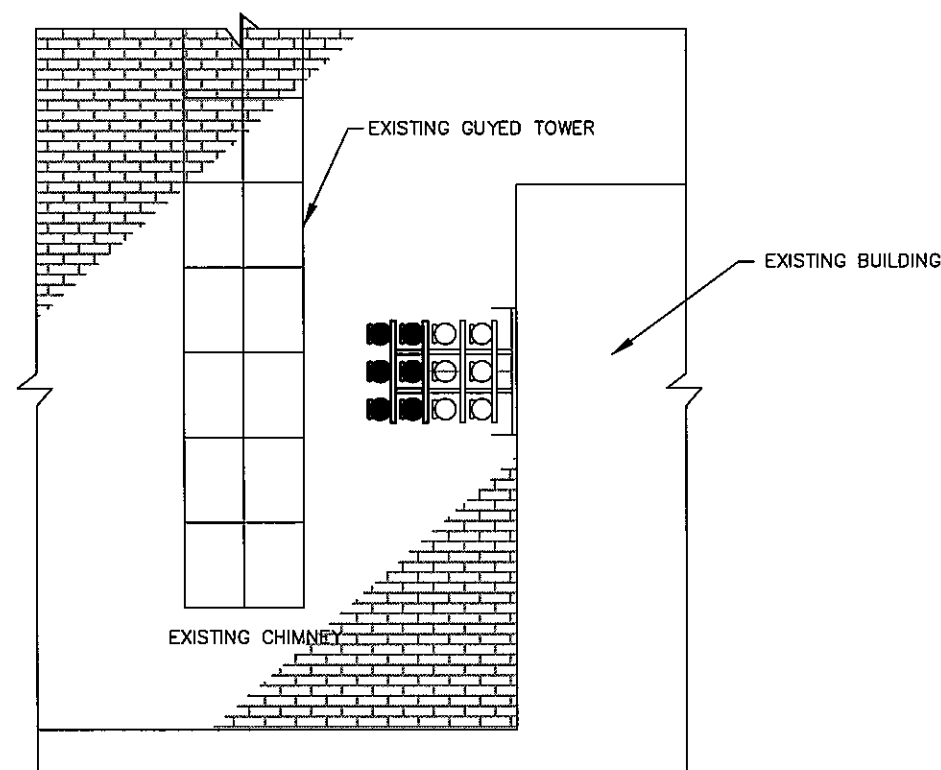
SCALE: N.T.S.



COAX CABLE TRAY SLEEPER

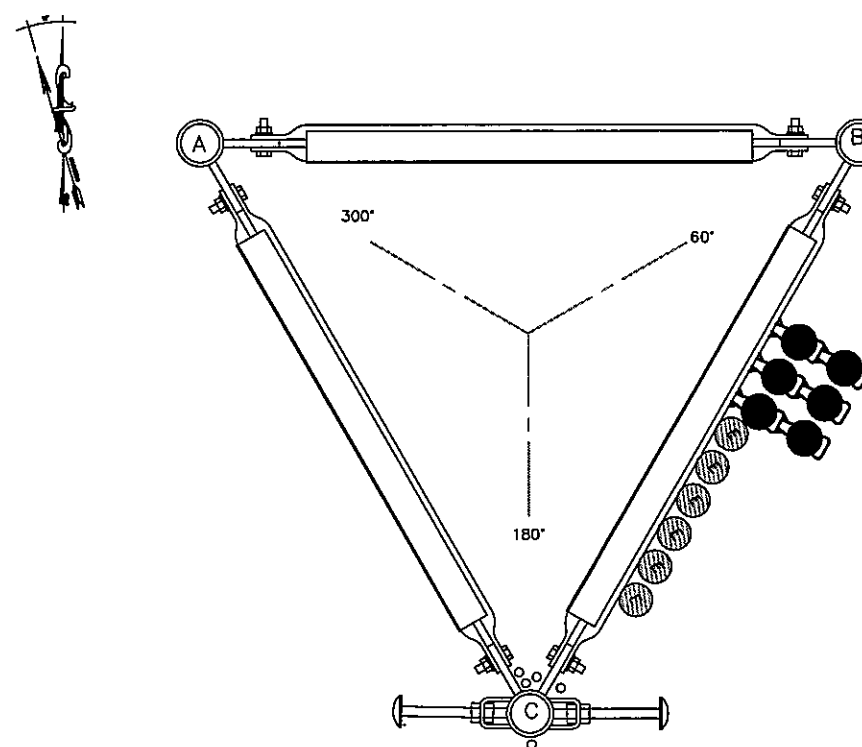
SCALE: N.T.S.

LEGEND	
EMPTY PORT	
EXISTING COAX TO REMAIN	
EXISTING COAX TO BE REMOVED	
PROPOSED COAX	
EXISTING EWG	
PROPOSED EWG	



ICE BRIDGE CONFIGURATION

SCALE: N.T.S.



PROPOSED COAX LAYOUT

SCALE: N.T.S.

PLANS PREPARED FOR:

U S Cellular
We connect with you
10 Corporate Drive, Suite 210, Bedford, NH 03110

PROJECT INFORMATION

853418 - ROSEMONT
370 STEVEN AVE
PORTLAND, ME 04103
(CUMBERLAND COUNTY)

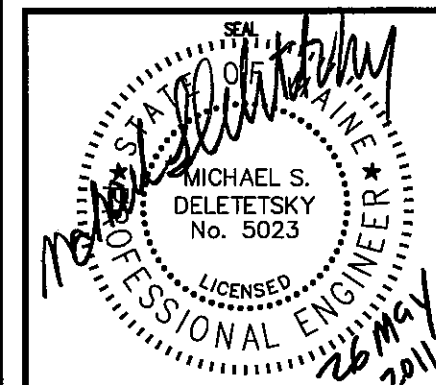
PLANS PREPARED BY:

amec

343 Gorham Road, South Portland ME 04106
P: (207) 761-1770 F: (207) 774-1246 www.amec.com

PROJECT COORDINATION & MANAGEMENT:

KJK Wireless, LLC
127 Ridge Road, Nashua, NH 03062
Phone: (603) 888-8974



REV	DATE	ISSUED FOR
1	5/26/11	ISSUED FOR CONSTRUCTION

PROJECT NO: 413.46.03

DRAWN BY: CBM

RELEASED BY: MSD

SHEET TITLE

**HATCH PLATE, ICE
BRIDGE DETAIL AND
COAX LAYOUT**

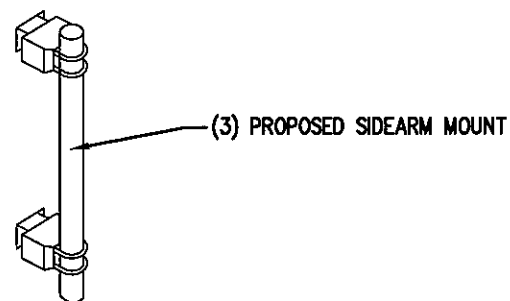
SHEET NUMBER

C-3

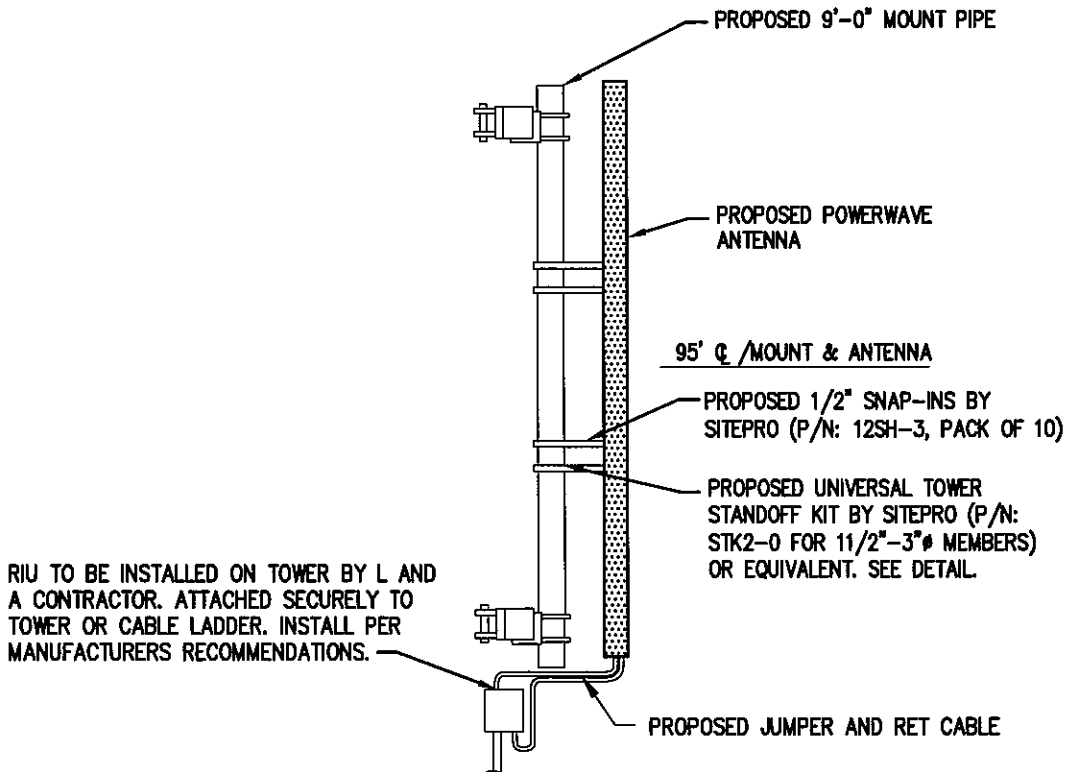
REVISION:

0

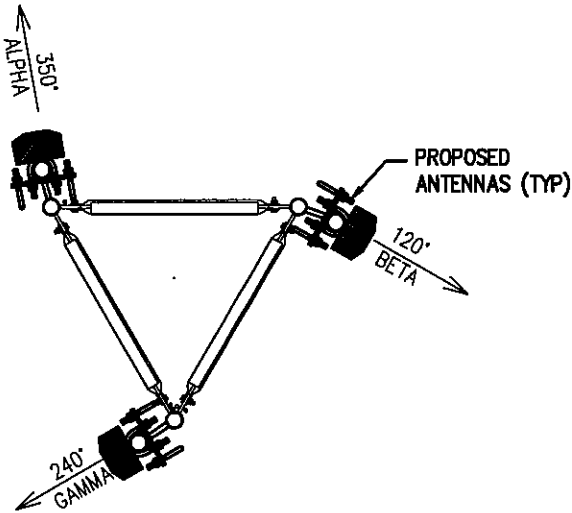
NOTE:
MOUNT INCLUDES ATTACHMENT HARDWARE,
TWO STIFF ARMS AND (3) MOUNTING PIPES
AND ATTACHED TO 1 1/2" TO 4 1/2" ROUND
LEGS. ADAPTOR KIT NEEDED FOR LARGER
LEGS.



PROPOSED SIDEARM MOUNT
SCALE: N.T.S.



SECTOR MOUNT PROFILE
SCALE: N.T.S.



NOTE: STABILIZER ARMS NOT SHOWN

PROPOSED ANTENNA/COAX SCHEDULE								
SECTOR	TECHNOLOGY	MANUFACTURER (MODEL #)	MOUNTING HEIGHT	AZIMUTH	COAX SIZE	RIU	COAX LENGTH	MECH. D-TILT
ALPHA	700 MHZ	POWERWAVE P65-17-XL-R	95'-0"	350°	(2) 1 5/8"	1	110'±	N/A
BETA	700 MHZ	POWERWAVE P65-17-XL-R	95'-0"	120°	(2) 1 5/8"	1	110'±	N/A
GAMMA	700 MHZ	POWERWAVE P65-17-XL-R	95'-0"	240°	(2) 1 5/8"	1	110'±	N/A

PROPOSED CONFIGURATION • 95 FT
SCALE: N.T.S.

PLANS PREPARED FOR:

U S Cellular
We connect with you
10 Corporate Drive, Suite 210, Bedford, NH 03110

PROJECT INFORMATION

853418 - ROSEMONT
370 STEVEN AVE
PORTLAND, ME 04103
(CUMBERLAND COUNTY)

PLANS PREPARED BY:

amec
343 Gorham Road, South Portland ME 04106
P: (207) 761-1770 F: (207) 774-1246 www.amec.com

PROJECT COORDINATION & MANAGEMENT:

KJK Wireless, LLC
127 Ridge Road, Nashua, NH 03062
Phone: (603) 888-8974

Professional Engineer Seal for Michael S. Deletetsky, No. 5023, State of Maine. The seal is circular with the text 'MAINE STATE PROFESSIONAL ENGINEER' around the perimeter. A signature is written across the seal, and the date '26 MAY 2011' is stamped at the bottom right.

REV	DATE	ISSUED FOR
1	5/28/11	ISSUED FOR CONSTRUCTION

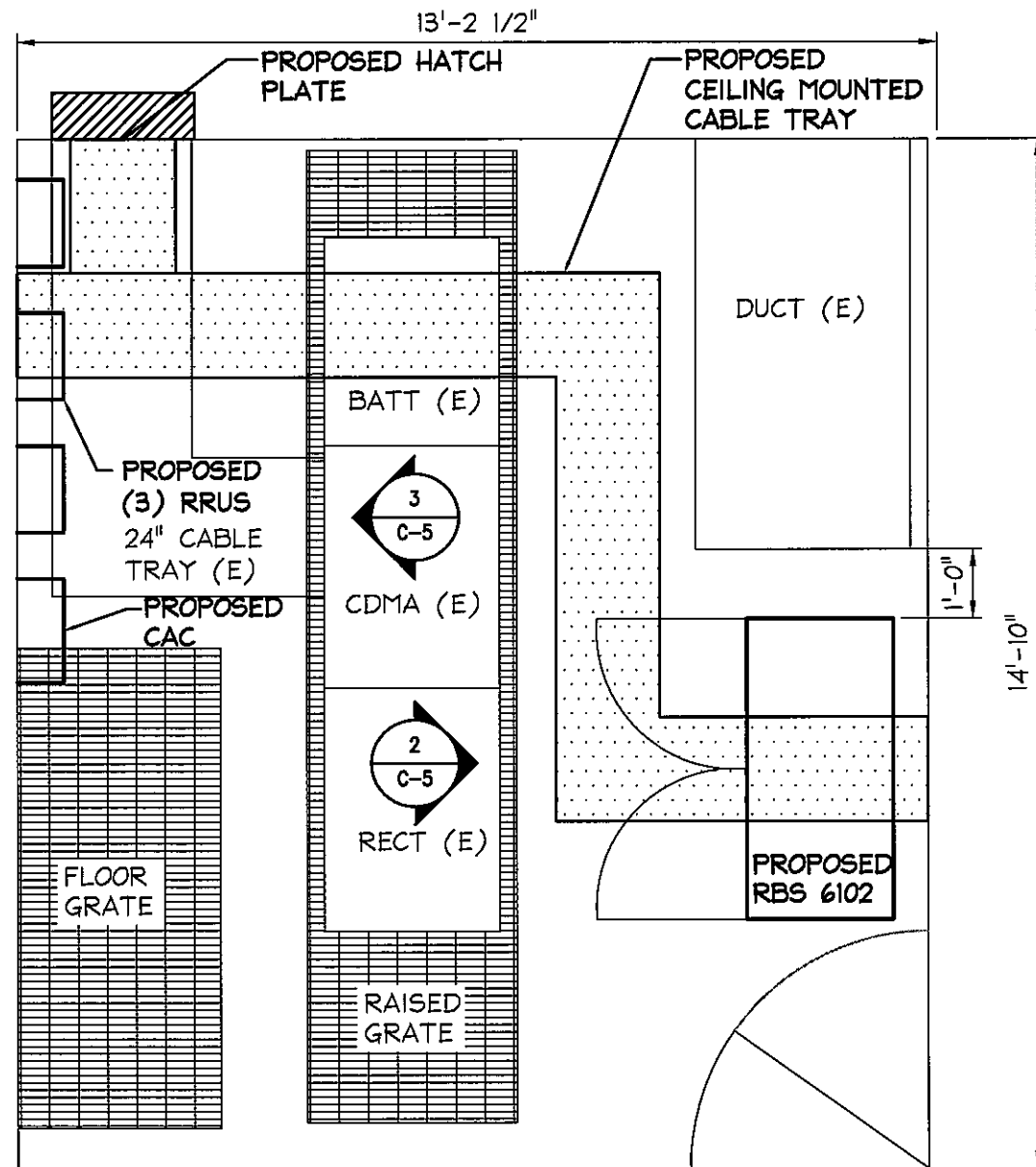
PROJECT NO: 413.46.03

DRAWN BY: CBM

RELEASED BY: MSD

SHEET TITLE
ANTENNA MOUNTING DETAILS

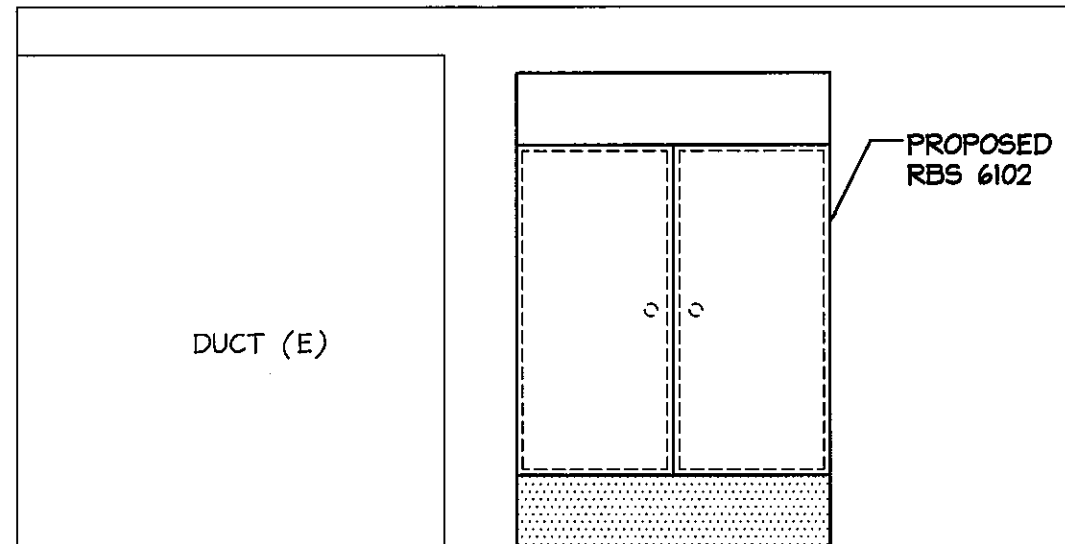
SHEET NUMBER C-4	REVISION: 0
----------------------------	-----------------------



1

PROPOSED EQUIPMENT FLOOR PLAN

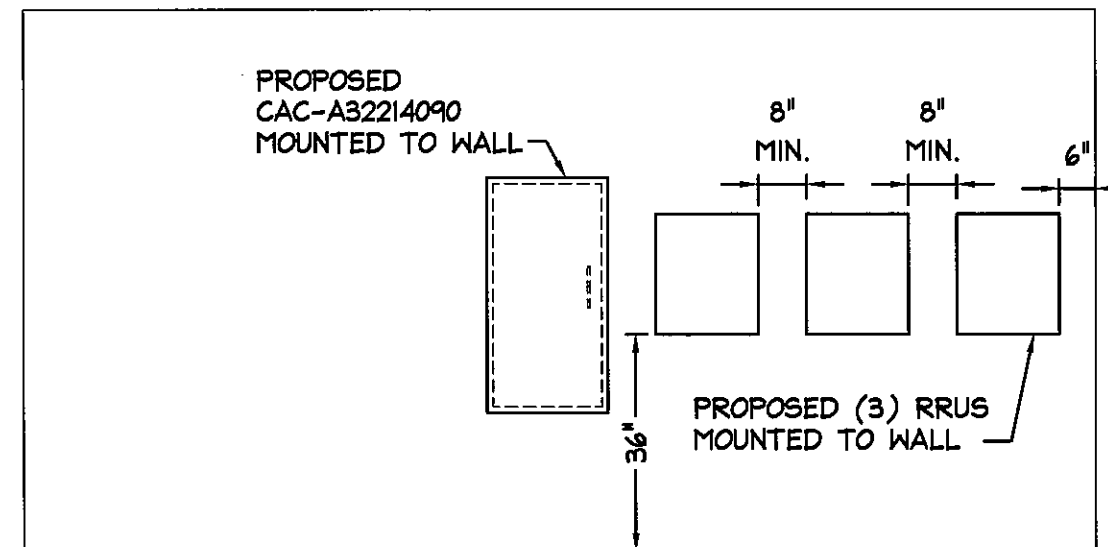
SCALE: N.T.S.



2

RBS ELEVATION

SCALE: N.T.S.



3

RRUS AND CAC ELEVATION

SCALE: N.T.S.

PLANS PREPARED FOR:



PROJECT INFORMATION

853418 - ROSEMONT
370 STEVEN AVE
PORTLAND, ME 04103
(CUMBERLAND COUNTY)

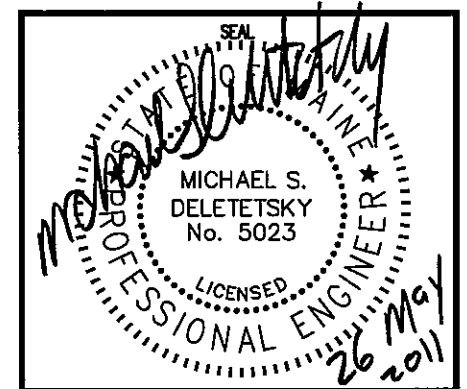
PLANS PREPARED BY:



343 Gorham Road, South Portland ME 04106
P: (207) 761-1770 F: (207) 774-1246 www.amec.com

PROJECT COORDINATION & MANAGEMENT:

KJK Wireless, LLC
127 Ridge Road, Nashua, NH 03062
Phone: (603) 888-8974



REV	DATE	ISSUED FOR
0	5/28/11	ISSUED FOR CONSTRUCTION

PROJECT NO: 413.46.03

DRAWN BY: CBM

RELEASED BY: MSD

SHEET TITLE

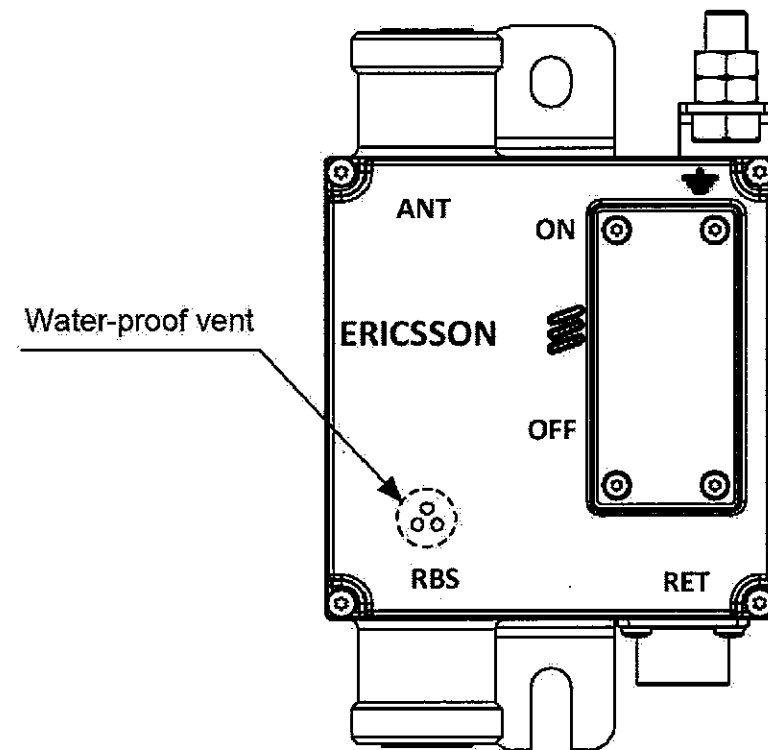
**EQUIPMENT FLOOR
PLAN AND ELEVATIONS**

SHEET NUMBER

C-5

REVISION:

0



NOTE:
RIU TO BE INSTALLED ON TOWER BY L AND A CONTRACTOR. ATTACHED SECURELY
TO TOWER OR CABLE LADDER. INSTALL PER MANUFACTURERS RECOMMENDATIONS.

PROPOSED ERICSSON RIU

SCALE: N.T.S.

PLANS PREPARED FOR:



PROJECT INFORMATION

853418 - ROSEMONT
370 STEVEN AVE
PORTLAND, ME 04103
(CUMBERLAND COUNTY)

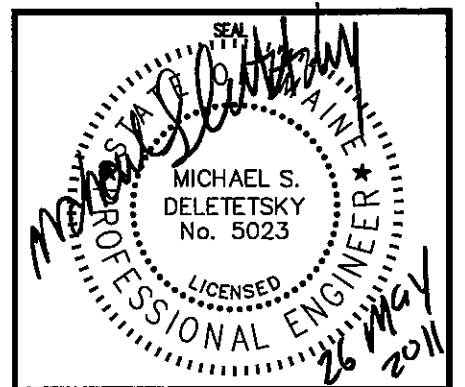
PLANS PREPARED BY:



343 Gorham Road, South Portland ME 04106
P: (207) 761-1770 F: (207) 774-1246 www.amec.com

PROJECT COORDINATION & MANAGEMENT:

KJK Wireless, LLC
127 Ridge Road, Nashua, NH 03062
Phone: (603) 888-8974



	5/26/11	ISSUED FOR CONSTRUCTION
REV	DATE	ISSUED FOR

PROJECT NO: 413.46.03

DRAWN BY: CBM

RELEASED BY: MSD

SHEET TITLE

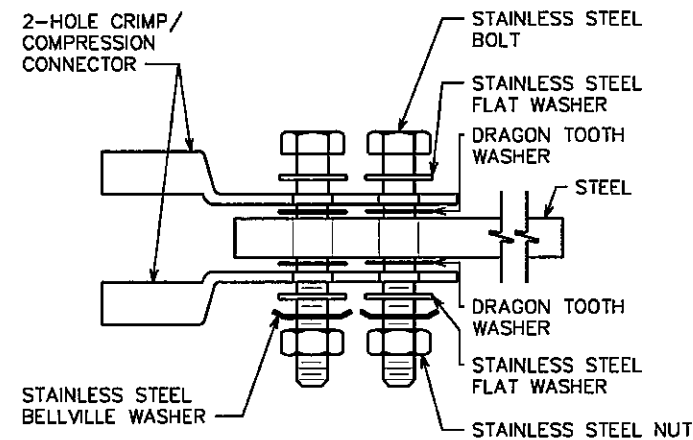
**ERICSSON
RIU
DETAIL**

SHEET NUMBER

C-6

REVISION:

0

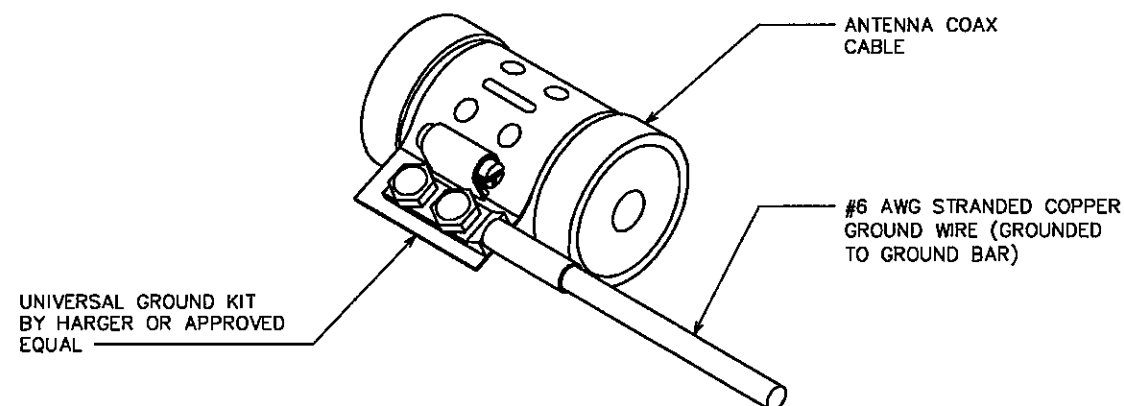


NOTES:

1. MINIMUM BEND RADIUS OF #2 SOLID CONDUCTOR IS 12"
2. ALL GROUND BARS SHALL BE INSTALLED WITH TAMPER RESISTANT MOUNTING HARDWARE

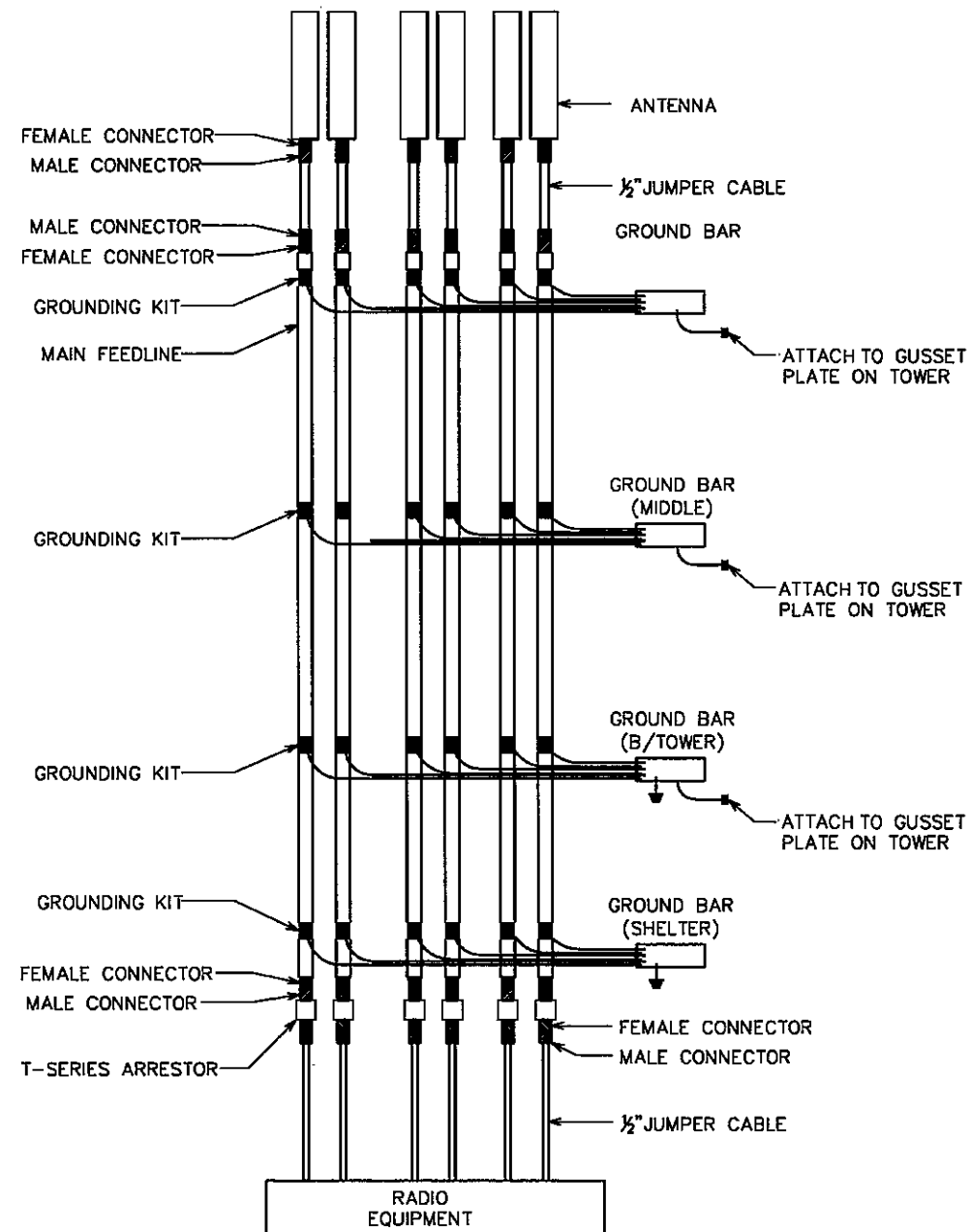
NOTES:

1. DO NOT INSTALL COAX GROUND KIT AT A BEND.
2. CONTRACTOR TO WEATHERPROOF COAX GROUND.



NOTE:

CONTRACTOR SHALL USE THE EXISTING GROUND BARS ALREADY INSTALLED ON TOWER AND SHELTER UNLESS OTHERWISE NOTED.



COAX ROUTING DETAIL

SCALE: N.T.S.

PLANS PREPARED FOR:

U S Cellular
We connect with you
10 Corporate Drive, Suite 210, Bedford, NH 03110

PROJECT INFORMATION

853418 - ROSEMONT
370 STEVEN AVE
PORTLAND, ME 04103
(CUMBERLAND COUNTY)

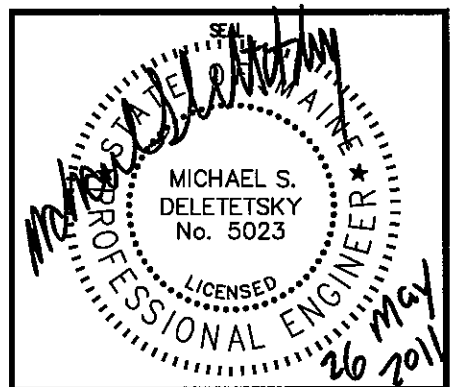
PLANS PREPARED BY:

amec

343 Gorham Road, South Portland ME 04106
P: (207) 761-1770 F: (207) 774-1246 www.amec.com

PROJECT COORDINATION & MANAGEMENT:

KJK Wireless, LLC
127 Ridge Road, Nashua, NH 03062
Phone: (603) 888-8974



REV	DATE	ISSUED FOR
0	5/26/11	ISSUED FOR CONSTRUCTION

PROJECT NO: 413.46.03

DRAWN BY: CBM

RELEASED BY: MSD

SHEET TITLE

GROUNDING DETAILS

SHEET NUMBER

E-1

REVISION:

0

GROUNDING DETAILS

SCALE: N.T.S.