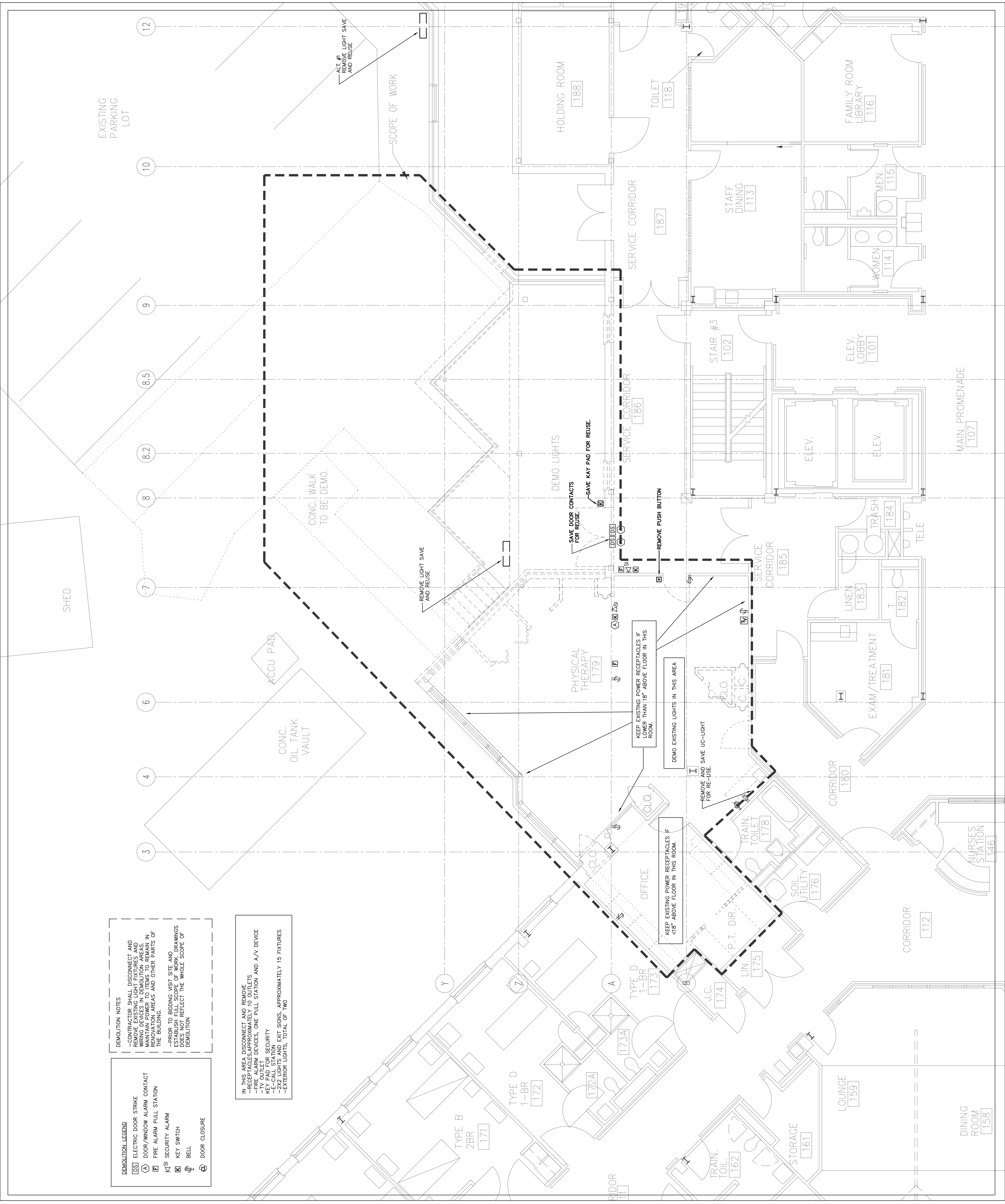


DEMOLITION LEGEND	
[DS]	ELECTRIC DOOR STRIKE
[D]	DOOR/WINDOW ALARM CONTACT
[F]	FIRE ALARM PULL STATION
[KS]	SECURITY ALARM
[K]	KEY SWITCH
[B]	BELL
[C]	DOOR CLOSURE

DEMOLITION NOTES
 -CONTRACTOR SHALL DISCONNECT AND REMOVE ALL ELECTRICAL DEVICES IN DEMOLITION AREAS.
 -MAINTAIN POWER TO ITEMS TO REMAIN IN DEMOLITION AREAS AND OTHER PARTS OF THE BUILDING.
 -ARRIVE TO DEMOS WITH SITE AND ESTABLISH FULL SCOPE OF WORK DRAWINGS.
 -DOES NOT REFLECT THE WHOLE SCOPE OF DEMOLITION

IN THIS AREA, DISCONNECT AND REMOVE
 -RECEPTACLES, APPROXIMATELY 10 OUTLETS
 -FIRE ALARM DEVICES, ONE PULL STATION AND A/V DEVICE
 -KEY PAD FOR SECURITY
 -E-CALL STATION
 -EXIT SIGNS, APPROXIMATELY 15 FIXTURES
 -EXTERIOR LIGHTS, TOTAL OF TWO



Revisions	No.	Date

Project
 THE SAM L. COHEN
 REHAB. CENTER
 AT THE CEDARS
 ALTERATIONS & ADDITION
 PORTLAND, MAINE

Drawing Title
 FIRST FLOOR
 DEMOLITION PLAN

Tsonides Associates Architects and Planners
 989 Eglot Street
 Newton Upper Falls, MA 02464
 (617) 963-4774 Fax: (617) 963-4783
 e-mail: info@tsonides.com www.tsonides.com

DATE REVISION 9/26/08
SCALE 1/4"=1'-0"
PROJECT NUMBER

DRAWN BY MM
DATE REVISION 9/26/08
SCALE 1/4"=1'-0"
PROJECT NUMBER

