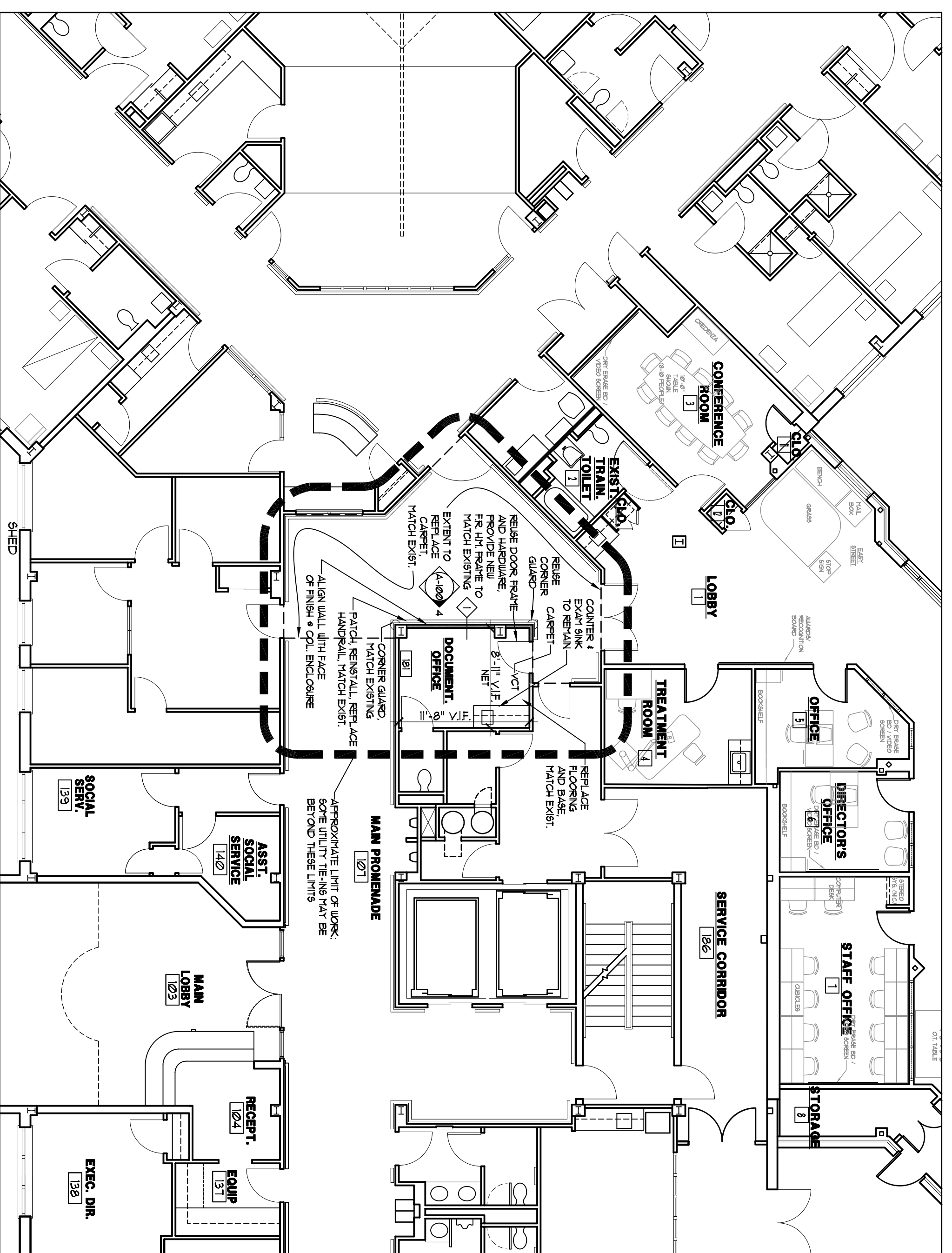
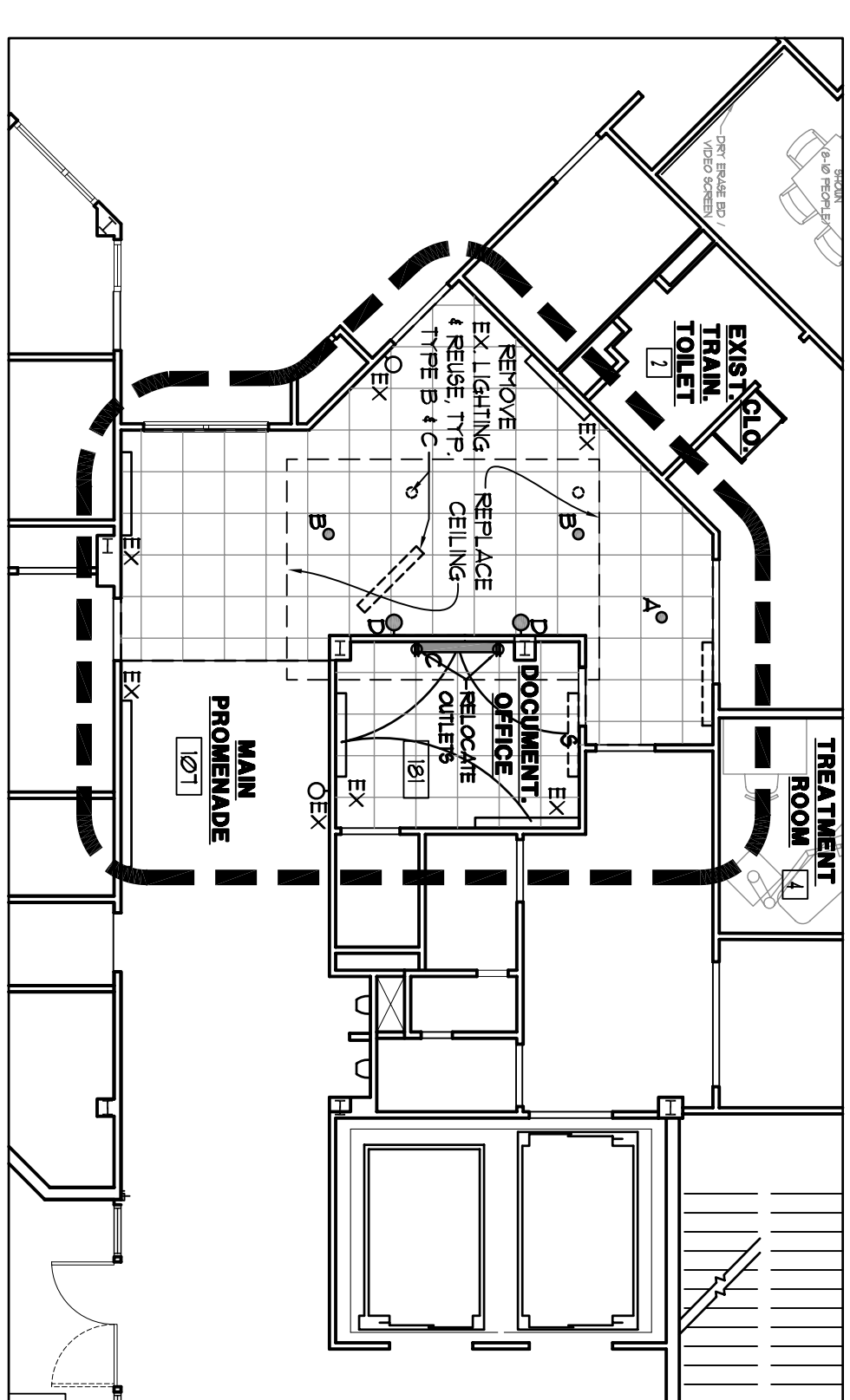


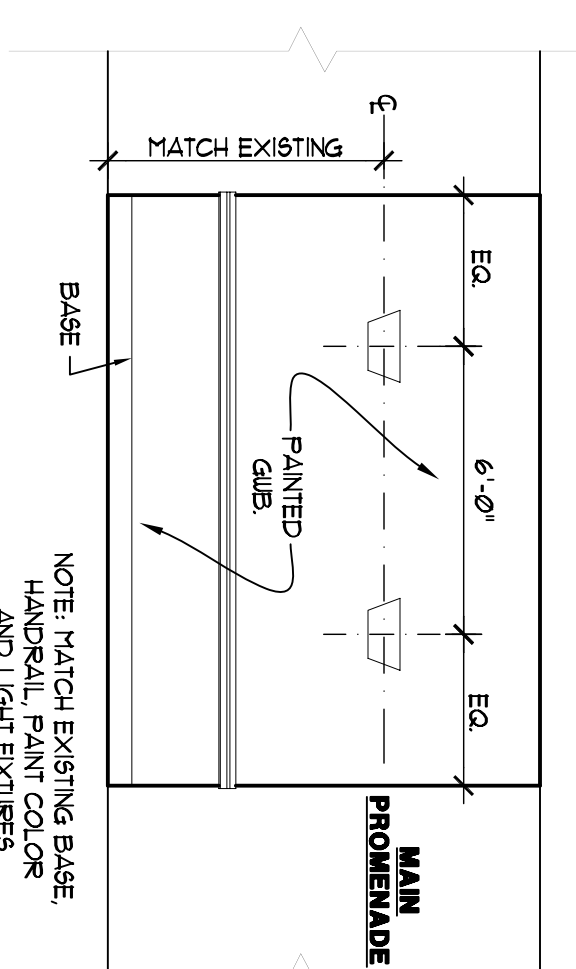
1 DEMOLITION PLAN



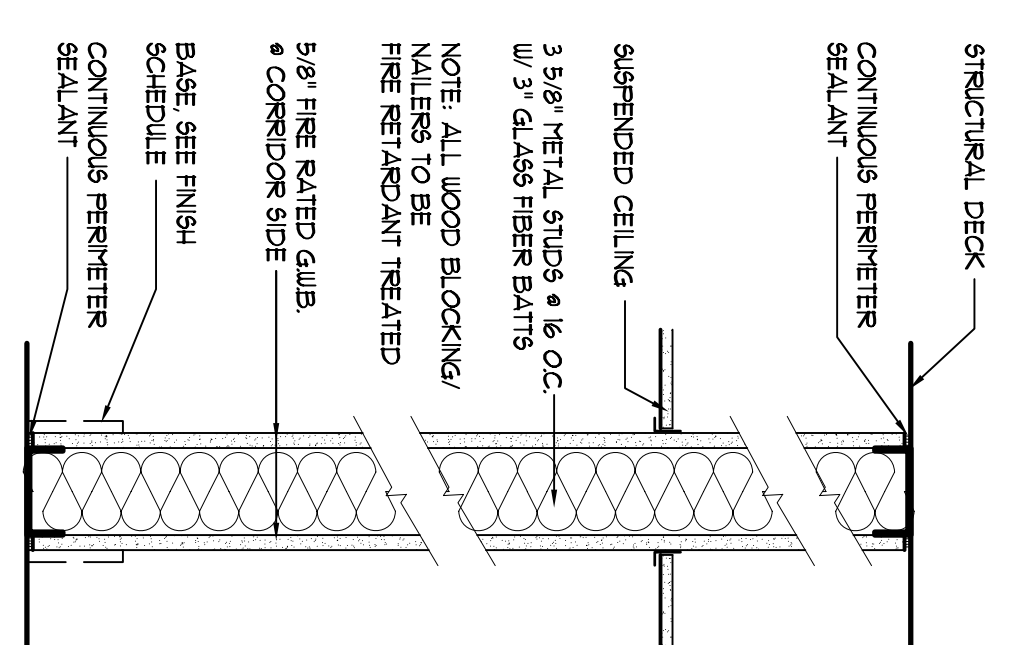
2 FIRST FLOOR PLAN



3 RCP AND ELECTRICAL PLAN



4 INTERIOR ELEVATION



5 PARTITION TYPE

REFLECTED CEILING PLAN SYMBOLS

A	○	NEW 4' CONTRACT ILUMINANT RECESSED CAN WITH EXISTING RECESSED CAN. REMOVE EXISTING
B	○	4'x4' ILUMINANT FIXTURE WITH EXISTING RECESSED CAN. REMOVE EXISTING
C	—	NEW WALL MOUNTED ILUMINANT FIXTURE WITH EXISTING RECESSED CAN. REMOVE EXISTING
D	○	NEW WALL MOUNTED ILUMINANT FIXTURE WITH EXISTING RECESSED CAN. REMOVE EXISTING
EX	≡	EXISTING LIGHT FIXTURE TO REMAIN
ACT	≡	ACT

SCOPE OF WORK

- REMOVE EXISTING WALLS AND PROVIDE NEW WALLS INDICATED.
- REMOVE AND REPLACE FINISHES (SEE SCHEDULE).
- ASSOCIATED CUTTING AND PATCHING.
- REMOVE AND REPLACE EXISTING LIGHTING. SEE RCP.
- ASSOCIATED MECHANICAL, SPRINKLER AND ELECTRICAL WORK.

GENERAL NOTES

- VERIFY ALL EXISTING CONDITIONS AND DIMENSIONS IN THE FIELD. NOTIFY ARCHITECT OF ANY DISCREPANCIES.
- EXISTING HANGERS AND DOOR ARE TO BE SAVED FOR REUSE. SEE FINISH SCHEDULE FOR PAINT FINISHES ETC.
- DNFS TO PLACE OF FINISH.

DEMOLITION NOTES

- DEMOLITION WORK THAT BE SHOWN ON PLANS, ELEVATIONS OR REFLECTED CEILING PLANS.
- CONTRACTOR SHALL BE RESPONSIBLE FOR ANY DAMAGE CAUSED TO EXISTING STRUCTURE TO REMAIN. CONTRACTOR SHALL SEAL OFF AREA OF WORK FROM DUST AND DEBRIS.
- CONTRACTOR SHALL BE RESPONSIBLE FOR PROTECTING EXISTING UTILITIES AND DEBRIS.
- ALL SURFACES CREATED OR EXPOSED BY DEMOLITION WORK SHALL BE FINISHED TO MATCH EXISTING AND MATCH ADJACENT UNEXPOSED FINISHED SURFACES INCLUDING FLOORS, BASES, WALLS, CEILING ETC.

FIRE PROTECTION

- RELOCATE AND REINSTALL/ADD SPRINKLER HEADS AS REQUIRED BY THIS WORK AND PERMITS. PROVIDE ANY ENGINEERING AND SUBMITTALS REQUIRED FOR PERMITTING BY AUTHORITIES HAVING JURISDICTION.

HVAC

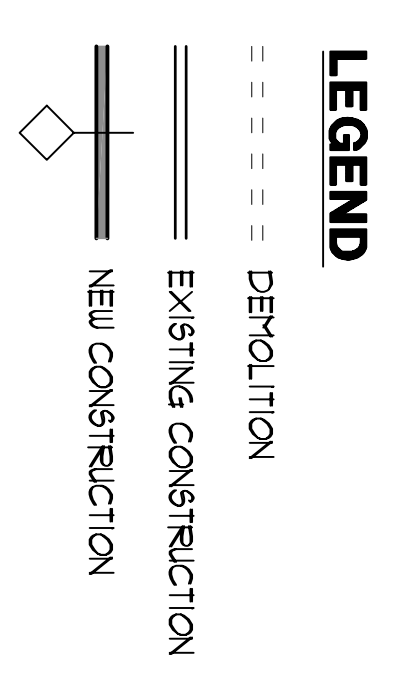
- REMOVE, RELOCATE, REFACE DUCTS, GRILLES, FILTERS, AS REQUIRED BY THIS WORK. VERIFY EXISTING CONDITIONS ABOVE CEILING AS REQUIRED FOR PERMITTING BY AUTHORITIES HAVING JURISDICTION.

ELECTRICAL

- RELOCATE REINSTALL, REPLACE FINE DETECTION/LAMP DEVICES.

CODE NOTES

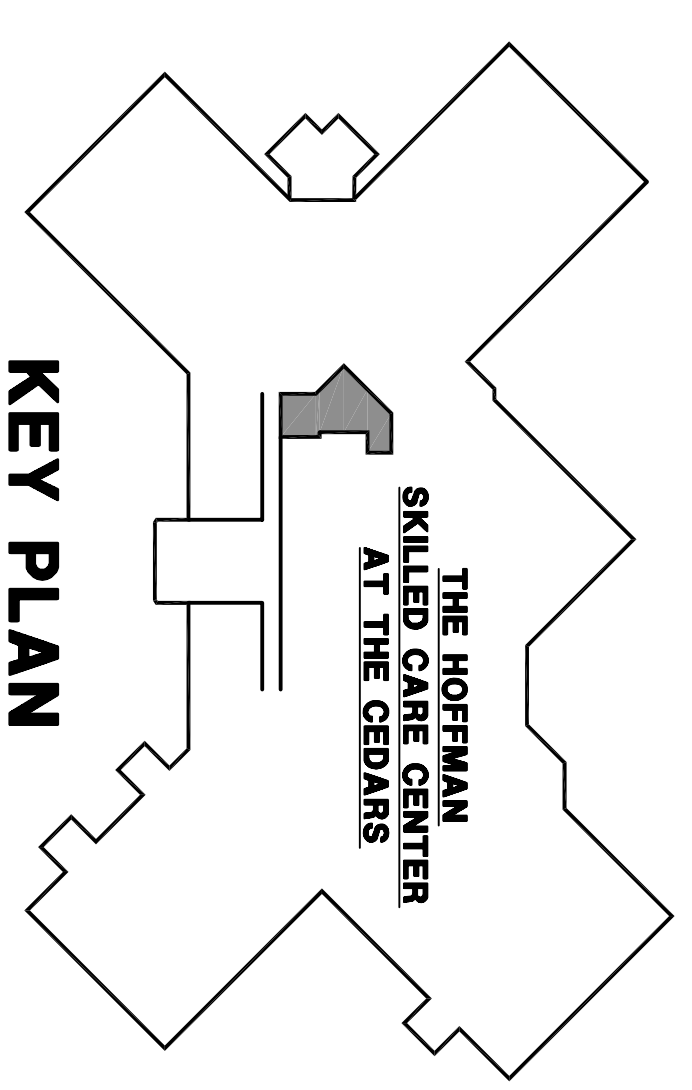
- THE DESIGN AND CONSTRUCTION OF PRODUCT SHALL CONFORM TO CODES, LAWS, REGULATIONS AND ORDINANCES OF ANY KIND REQUIRED BY GOVERNMENTAL AGENCIES AND AGENCIES OF THE STATE OF MAINE. CONTRACTOR SHALL OBTAIN ALL NECESSARY PERMITS AND APPROVALS FROM THE APPROPRIATE AGENCIES.
- INTERNATIONAL BUILDING CODE 2009
- NEPA 101 LATEST EDITION
- NFPA 780
- NFPA 72
- NFPA 13
- NFPA 16
- NFPA 17
- NFPA 18
- NFPA 19
- NFPA 20
- NFPA 21
- NFPA 22
- NFPA 23
- NFPA 24
- NFPA 25
- NFPA 26
- NFPA 27
- NFPA 28
- NFPA 29
- NFPA 30
- NFPA 31
- NFPA 32
- NFPA 33
- NFPA 34
- NFPA 35
- NFPA 36
- NFPA 37
- NFPA 38
- NFPA 39
- NFPA 40
- NFPA 41
- NFPA 42
- NFPA 43
- NFPA 44
- NFPA 45
- NFPA 46
- NFPA 47
- NFPA 48
- NFPA 49
- NFPA 50
- NFPA 51
- NFPA 52
- NFPA 53
- NFPA 54
- NFPA 55
- NFPA 56
- NFPA 57
- NFPA 58
- NFPA 59
- NFPA 60
- NFPA 61
- NFPA 62
- NFPA 63
- NFPA 64
- NFPA 65
- NFPA 66
- NFPA 67
- NFPA 68
- NFPA 69
- NFPA 70
- NFPA 71
- NFPA 72
- NFPA 73
- NFPA 74
- NFPA 75
- NFPA 76
- NFPA 77
- NFPA 78
- NFPA 79
- NFPA 80
- NFPA 81
- NFPA 82
- NFPA 83
- NFPA 84
- NFPA 85
- NFPA 86
- NFPA 87
- NFPA 88
- NFPA 89
- NFPA 90
- NFPA 91
- NFPA 92
- NFPA 93
- NFPA 94
- NFPA 95
- NFPA 96
- NFPA 97
- NFPA 98
- NFPA 99
- NFPA 100
- NFPA 101
- NFPA 102
- NFPA 103
- NFPA 104
- NFPA 105
- NFPA 106
- NFPA 107
- NFPA 108
- NFPA 109
- NFPA 110
- NFPA 111
- NFPA 112
- NFPA 113
- NFPA 114
- NFPA 115
- NFPA 116
- NFPA 117
- NFPA 118
- NFPA 119
- NFPA 120
- NFPA 121
- NFPA 122
- NFPA 123
- NFPA 124
- NFPA 125
- NFPA 126
- NFPA 127
- NFPA 128
- NFPA 129
- NFPA 130
- NFPA 131
- NFPA 132
- NFPA 133
- NFPA 134
- NFPA 135
- NFPA 136
- NFPA 137
- NFPA 138
- NFPA 139
- NFPA 140
- NFPA 141
- NFPA 142
- NFPA 143
- NFPA 144
- NFPA 145
- NFPA 146
- NFPA 147
- NFPA 148
- NFPA 149
- NFPA 150
- NFPA 151
- NFPA 152
- NFPA 153
- NFPA 154
- NFPA 155
- NFPA 156
- NFPA 157
- NFPA 158
- NFPA 159
- NFPA 160
- NFPA 161
- NFPA 162
- NFPA 163
- NFPA 164
- NFPA 165
- NFPA 166
- NFPA 167
- NFPA 168
- NFPA 169
- NFPA 170
- NFPA 171
- NFPA 172
- NFPA 173
- NFPA 174
- NFPA 175
- NFPA 176
- NFPA 177
- NFPA 178
- NFPA 179
- NFPA 180
- NFPA 181
- NFPA 182
- NFPA 183
- NFPA 184
- NFPA 185
- NFPA 186
- NFPA 187
- NFPA 188
- NFPA 189
- NFPA 190
- NFPA 191
- NFPA 192
- NFPA 193
- NFPA 194
- NFPA 195
- NFPA 196
- NFPA 197
- NFPA 198
- NFPA 199
- NFPA 200



ROOM FINISH SCHEDULE

ROOM NAME	FLOOR	BASE	WALLS	CEILING	REMARKS
EXHIBITION ROOM	VCT-FINE	VNTL	GLASS/PANET	ACT-2	COUNTER EXHIBIT SINK TO REMAIN. MATCH EXISTING
MAIN PROMENADE	CARPET	VNTL	GLASS/PANET	ACT-2	MATCH EXISTING FINISHES

LEGEND
 VCT-2 VINYL COMPOSITION TILE MATCH EXISTING
 ACT-2 1/2" x 1/2" ACQUATIC TILE PANELS, TEAL/BLUE EGGED, FINE RATED TILE 1/8" GRID SYSTEM MATCH EXISTING
 VNTL MATCH EXISTING FINISHES



KEY PLAN

Revisions

NO.	Date

Project
THE SAM L. COHEN
REHAB. CENTER
AT THE CEDARS
ALTERATIONS & ADDITION
PORTLAND, MAINE

Drawing Title
ALT. #2. RENOV. TO
DOC. OFF & CORR.

Tsonides Associates
 Architects and Planners
 389 Elliot Street
 Newton Upper Falls, MA 02464
 (617) 989-4774 Fax (617) 989-4793
 email: info@tsonides.com www.tsonides.com

DATE PLOTTED: 5/27/10
 PLOT NUMBER: 5-28-08
 SCALE: 1/8" = 1'-0" UNLTD.
A-7