

LOCATION OF ALL MECHANICAL COMPONENTS AND ELECTRICAL EQUIPMENT SHALL BE SHOWN ON THIS DRAWING. THE CONTRACTOR SHALL VERIFY THE LOCATION OF ALL EQUIPMENT RELATING TO THE MECHANICAL AND ELECTRICAL EQUIPMENT SUPPLIERS.

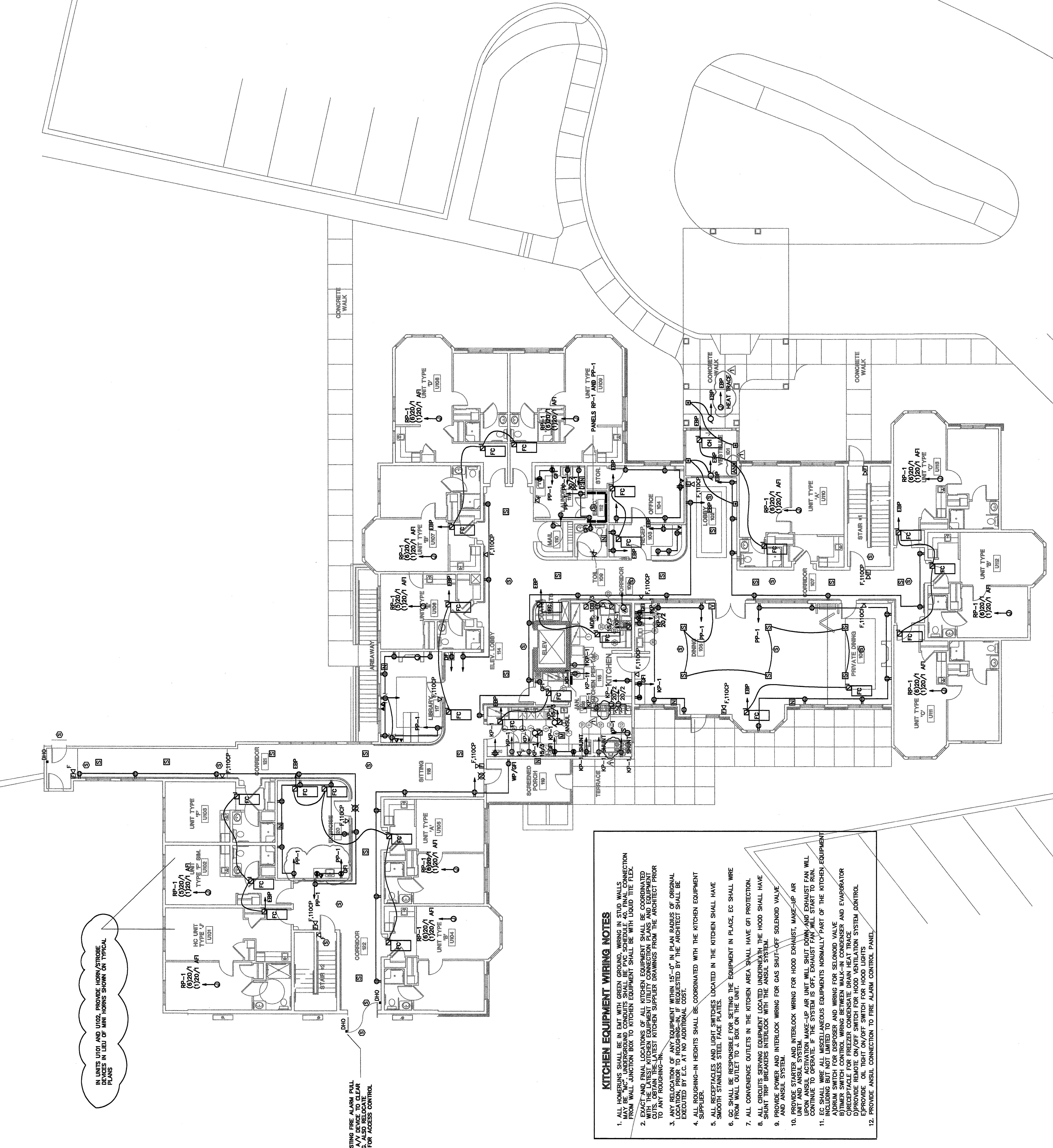
IN ATTIC SPACE PROVIDE:

- TOTAL OF (8) BENT INCANDESCENT LIGHT CONTROLLED FROM 200/120V DEDICATED CIRCUIT AND FEED FROM PANEL. PROVIDE TOTAL OF (4) HOUR LOGS ON ONE CIRCUIT AND FEED. PROVIDE (3) THREE HOUR/STROBE LIGHTS SCATTERED EVENLY.

OUTLETS AT FOLLOWING LOCATIONS SHALL BE PROVIDED AS SHOWN:

- RESIDENTIAL BATHROOMS, 210.8(A)
- COMMERCIAL KITCHENS, 210.8(A)
- ROOF TOPS, 210.8(B)(2)

ALL WIRING LOCATIONS SHALL BE COORDINATED WITH REFLECTED CEILING PLANS IN FIELD SO THAT DETECTORS SHALL BE INSTALLED AT LEAST 18" FROM THE CENTER OF THE DETECTOR. DETECTORS SHALL BE INSTALLED AT LEAST 18" FROM THE CENTER OF THE DETECTOR. DETECTORS SHALL BE INSTALLED AT LEAST 18" FROM THE CENTER OF THE DETECTOR.



KITCHEN EQUIPMENT WIRING NOTES

1. ALL WIRING SHALL BE IN EMT WITH GREEN GROUND. WIRING IN STUD WALLS FROM WALL JUNCTION BOX TO KITCHEN EQUIPMENT SHALL BE WITH LIQUID TIE FLEX.
2. EXACT AND FINAL LOCATIONS OF ALL KITCHEN EQUIPMENT SHALL BE COORDINATED WITH THE LATEST KITCHEN EQUIPMENT UTILITY CONNECTION PLANS AND EQUIPMENT SUPPLIER. PROVIDE HORN/STROBE LIGHTS IN FIELD OF AIR HANDS SHOWN ON TYPICAL PLANS TO ANY TOUCHING-IN.
3. ANY RELOCATION OF ANY EQUIPMENT WITHIN 15'-0" IN PLAN RADIUS OF ORIGINAL LOCATION SHALL BE REQUESTED BY THE ARCHITECT SHALL BE EXECUTED BY E.C. TO ADDITIONAL COST.
4. ALL TOUCHING-IN HEIGHTS SHALL BE COORDINATED WITH THE KITCHEN EQUIPMENT SUPPLIER.
5. ALL RECEPTACLES AND LIGHT SWITCHES LOCATED IN THE KITCHEN SHALL HAVE SMOOTH STAINLESS STEEL FACE PLATES.
6. E.C. SHALL BE RESPONSIBLE FOR SETTING THE EQUIPMENT IN PLACE. E.C. SHALL WIRE FROM WALL OUTLET TO J. BOX ON THE UNIT.
7. ALL CONVENIENCE OUTLETS IN THE KITCHEN AREA SHALL HAVE GFI PROTECTION.
8. ALL CIRCUITS SERVING EQUIPMENT LOCATED UNDERNEATH THE HOOD SHALL HAVE SHORT TRIP BREAKERS INTERLOCK WITH THE ANSUL SYSTEM.
9. PROVIDE INTERLOCK WIRING FOR GAS SHUT-OFF SOLENOID VALVE AND ANSUL SYSTEM.
10. PROVIDE STARTER AND INTERLOCK WIRING FOR HOOD EXHAUST, MAKE-UP AIR UNIT AND ANSUL SYSTEM. MAKE-UP AIR UNIT WILL SHUT DOWN AND EXHAUST FAN WILL CONTINUE TO OPERATE IF THE SYSTEM IS OFF. EXHAUST FAN WILL START TO RUN. PROVIDE STARTER AND INTERLOCK WIRING FOR HOOD EXHAUST, MAKE-UP AIR UNIT AND ANSUL SYSTEM.
11. E.C. SHALL WIRE ALL MISCELLANEOUS EQUIPMENTS NORMALLY PART OF THE KITCHEN EQUIPMENT SUPPLIER. PROVIDE WIRING FOR SELENOID VALVE AND WIRING FOR SELENOID VALVE BY-THERM SWITCH FOR DISPOSER AND WIRING BETWEEN WALK-IN CONDENSER AND EVAPORATOR RECEPTACLE FOR FREEZER CONDENSATE DRAIN HEAT TRACE. PROVIDE WIRING FOR CONDENSATE DRAIN HEAT TRACE. PROVIDE ON/TIGHT ON/OFF SWITCH FOR HOOD LIGHTS.
12. PROVIDE ANSUL CONNECTION TO FIRE ALARM CONTROL PANEL.

Revisions	No.	Date
GENERAL REVISIONS	1	07/20/06
FINAL PRICING	2	10/05/06
HAD FIRM COMMITMENT	3	11/27/06

Project:
THE INN AT CEDARS
 PORTLAND, MAINE

Drawing Title:
ELECTRICAL FIRST FLOOR POWER PLAN

Tsonides Associates Architects and Planners
 389 Elliot Street
 Newton Upper Falls, MA 02464
 TEL: (617) 552-3377 FAX: (617) 552-3378
 WWW.TSONIDES.COM

SEAL OF THE STATE OF MAINE
 REGISTERED PROFESSIONAL ENGINEER
 No. 10187
 EXPIRES 12/31/07

ZEDE COMPANY INC.
 CONSULTING ENGINEERS
 1000 WASHINGTON ST. BOSTON, MA 02111
 TEL: (617) 538-4400
 FAX: (617) 531-2540
 E-MAIL: zede@zedecorp.com

DATE PLOTTED: 07/24/06 09:52
 SCALE: 1/8" = 1'-0"
 DRAWING NUMBER: E-300