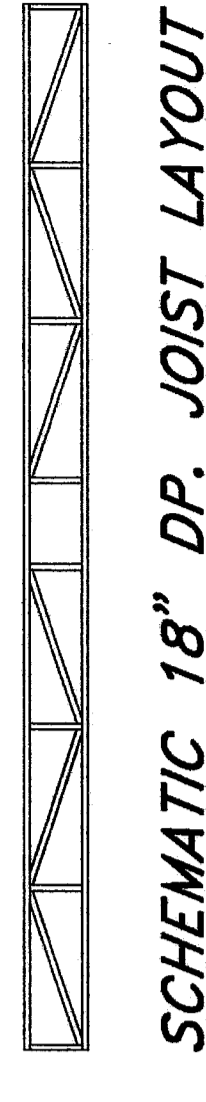
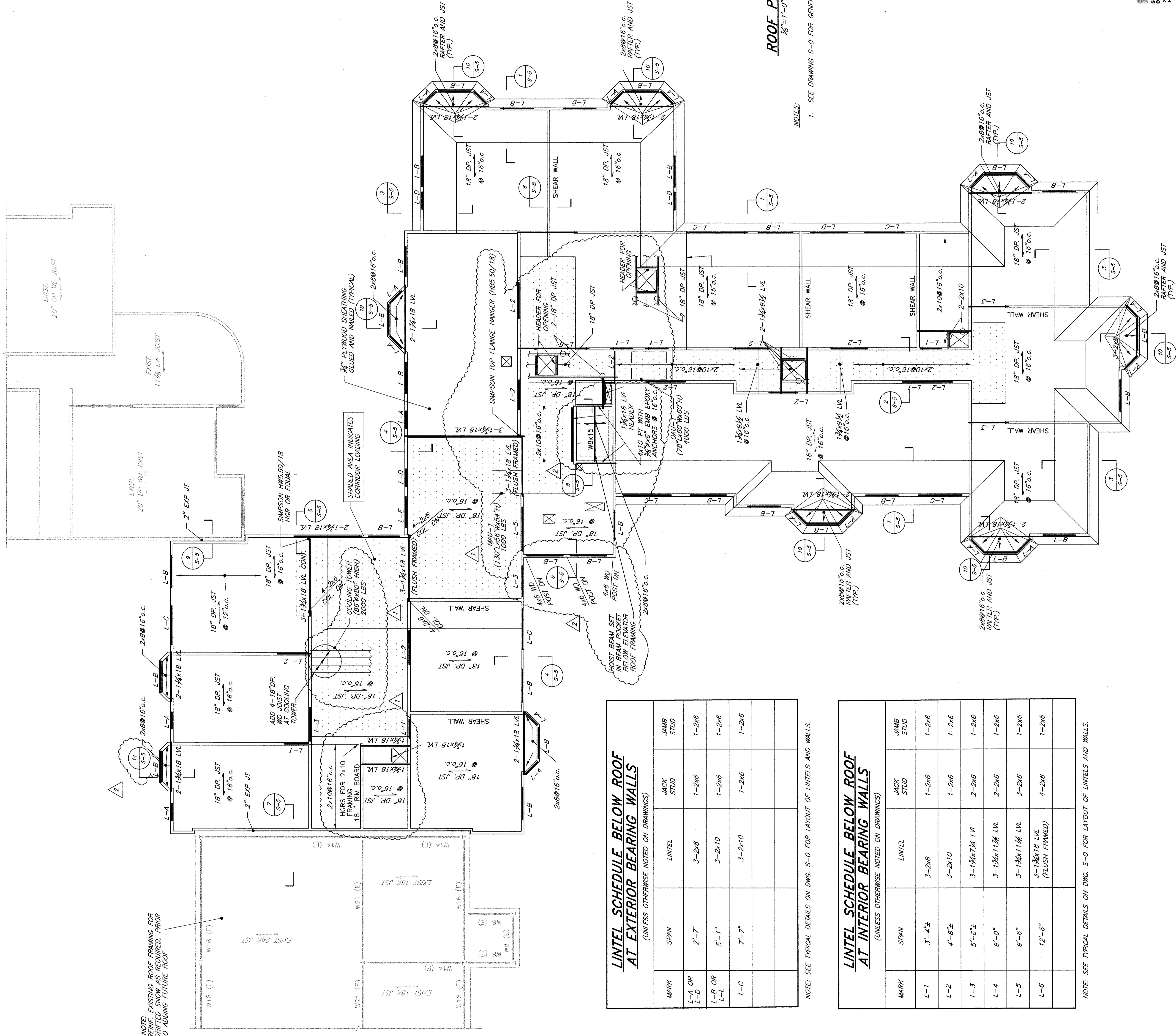


NOTE: EXISTING ROOF FRAMING FOR REINF. SHOWN AS REQUIRED. PRIOR TO ADJOINING FUTURE ROOF.



SCHEMATIC 18" DP JOIST LAYOUT

| TRUSS DESIGN LOADS | |
|--------------------|--------|
| LOADING | LIVE |
| TOP CHORD | 12 PSF |
| BOTTOM CHORD | 5 PSF |
| | 0 PSF |

REVISIONS TO THIS DESIGN DRAWING TO BE MADE IN ACCORDANCE WITH THE PERMITS OFFICE FOR LOCATIONS.

LINTEL SCHEDULE BELOW ROOF AT EXTERIOR BEARING WALLS
(UNLESS OTHERWISE NOTED ON DRAWINGS)

| MARK | SPAN | LINTEL | JACK STUD | JAMB STUD |
|------------|-------|--------|-----------|-----------|
| L-A OR L-D | 2'-7" | 3-2x8 | 1-2x6 | 1-2x6 |
| L-B OR L-E | 5'-1" | 3-2x10 | 1-2x6 | 1-2x6 |
| L-C | 7'-7" | 3-2x10 | 1-2x6 | 1-2x6 |

NOTE: SEE TYPICAL DETAILS ON DWG. S-0 FOR LAYOUT OF LINTELS AND WALLS.

LINTEL SCHEDULE BELOW ROOF AT INTERIOR BEARING WALLS
(UNLESS OTHERWISE NOTED ON DRAWINGS)

| MARK | SPAN | LINTEL | JACK STUD | JAMB STUD |
|------|-----------|-----------------------------|-----------|-----------|
| L-1 | 3'-4 1/2" | 3-2x8 | 1-2x6 | 1-2x6 |
| L-2 | 4'-8 1/2" | 3-2x10 | 1-2x6 | 1-2x6 |
| L-3 | 5'-6 1/2" | 3-1x6x7 1/4 LVL | 2-2x6 | 1-2x6 |
| L-4 | 9'-0" | 3-1x6x11 1/8 LVL | 2-2x6 | 1-2x6 |
| L-5 | 9'-8" | 3-1x6x11 1/8 LVL | 3-2x6 | 1-2x6 |
| L-6 | 12'-6" | 3-1x6x18 LVL (FLUSH FRAMED) | 4-2x6 | 1-2x6 |

NOTE: SEE TYPICAL DETAILS ON DWG. S-0 FOR LAYOUT OF LINTELS AND WALLS.

ROOF PLAN
1/8" = 1'-0"

NOTES:
1. SEE DRAWING S-0 FOR GENERAL NOTES AND TYPICAL DETAILS.

| NO. | DATE |
|-----|------------|
| 1 | 3/20/2006 |
| 2 | 10/26/2006 |
| 3 | 11/22/2006 |

Project:
THE INN AT CEDARS
PORTLAND, MAINE

Drawing Title:
ROOF PLAN (FUTURE FLOOR)

Tsomides Associates Architects and Planners
388 Elliot Street
Newton Upper Falls, MA 02464
(617) 549-1174 Fax: (617) 549-9933
tjtsomides@tsomides.com www.tsomides.com

| NO. | DATE | BY | SCALE |
|-----|------------|----|----------|
| REB | 11/22/2006 | | AS NOTED |

S-3

Foley Buhl Roberts & Associates, Inc.
100 WATER STREET, SUITE 200
PORTLAND, MAINE 04101
TEL: 603.761.1111 FAX: 603.761.1112
WWW.FOLEYBUHLROBERTS.COM