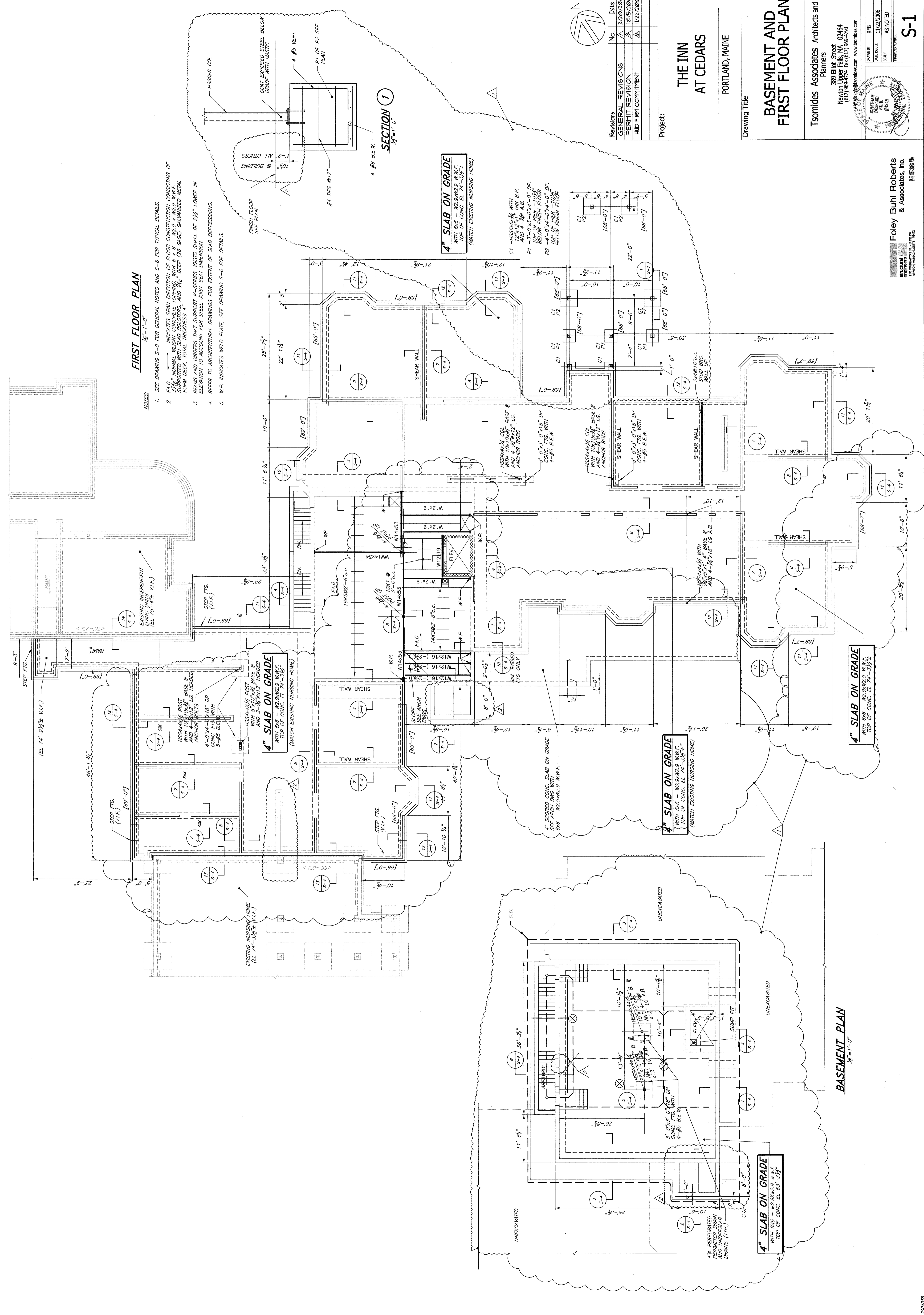


FIRST FLOOR PLAN
1/8" = 1'-0"

- NOTES**
1. SEE DRAWING S-0 FOR GENERAL NOTES AND S-6 FOR TYPICAL DETAILS.
 2. F.L.O. INDICATES SPAN DIRECTION OF FLOOR CONSTRUCTION CONSISTING OF 3/4" NORMAL WEIGHT CONCRETE TOPPING WITH 6 X 6 - W2.9 X W2.9 W.W.F. SUPPORTED WITH SLAB BOLSTERS, AND 3/8" DEEP (26 GAGE) GALVANIZED METAL FORM DECK. TOTAL THICKNESS 4".
 3. BEAMS AND COLUMNS THAT SUPPORT 1-STORY ROOFERS SHOULD BE 2 1/2" LOWER IN ELEVATION THAN INDICATED. SEE ARCHITECTURAL DRAWINGS FOR EXTENT OF SLAB DEPRESSIONS.
 4. REFER TO ARCHITECTURAL DRAWINGS FOR EXTENT OF SLAB DEPRESSIONS.
 5. W.P. INDICATES WELD PLATE. SEE DRAWING S-0 FOR DETAILS.



NO.	DATE	DESCRIPTION
1	3/20/2006	GENERAL REVISIONS
2	10/15/2006	PERMIT REVISION
3	11/27/2006	LAD FIRST COMMITMENT

Project: **THE INN AT CEDARS**
PORTLAND, MAINE

Drawing Title: **BASEMENT AND FIRST FLOOR PLAN**

Tsomidis Associates Architects and Planners
389 Elliot Street
Newton Upper Falls, MA 02464
(617) 965-4774 Fax (617) 969-1793
www.tsomidis.com

Scale: AS NOTED

Author: RRB
Date Plotted: 11/27/2006
Scale: AS NOTED

85101740
11/27/2006
11:27:20 AM
11/27/2006

S-1

Foley Buhl Roberts & Associates, Inc.
Professional Engineers
1000 WASHINGTON STREET
PORTLAND, MAINE 04101
TEL: 603-883-2222
FAX: 603-883-2223
WWW.FOLEYBUHLROBERTS.COM