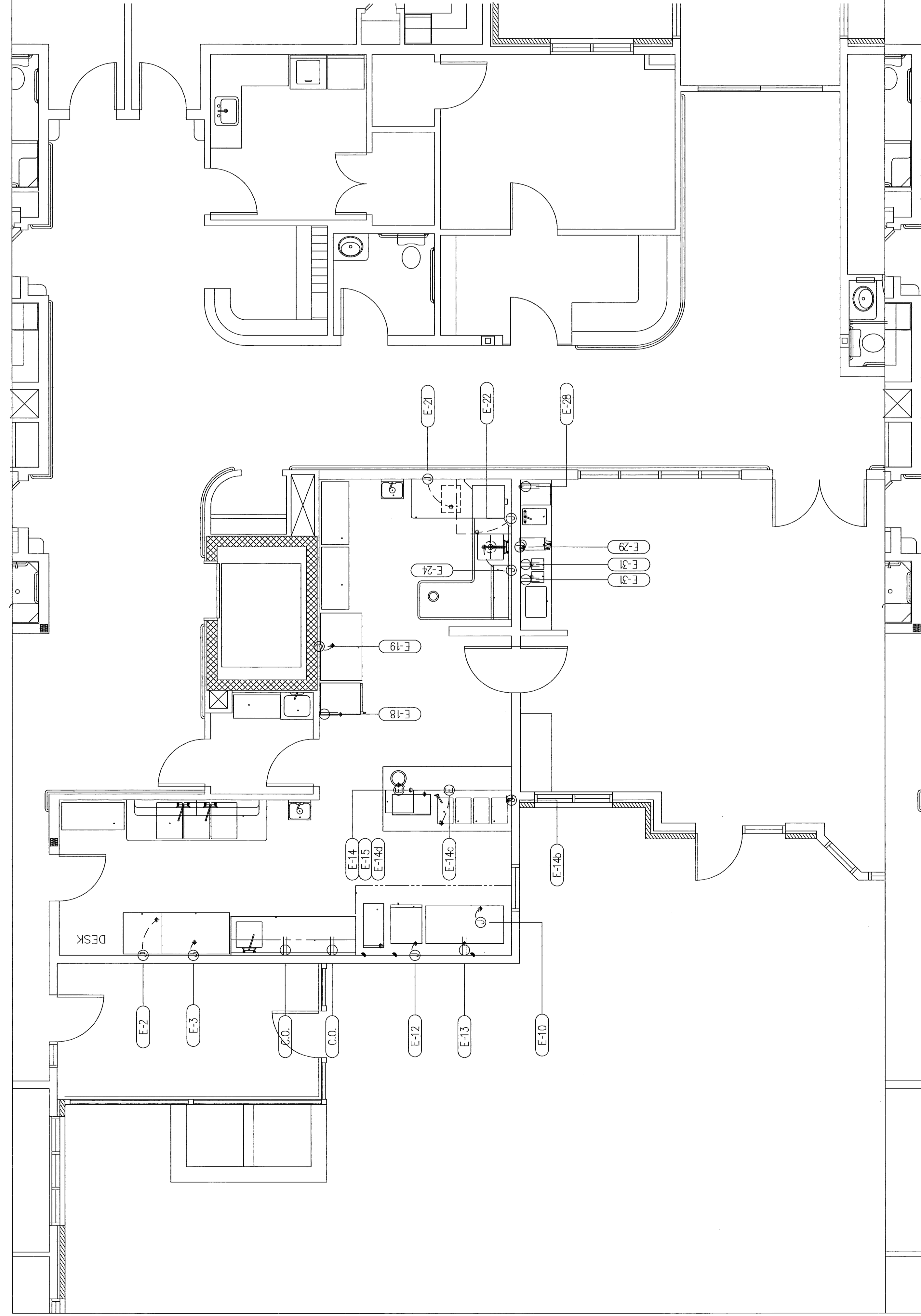


ELECTRICAL CONNECTION SCHEDULE

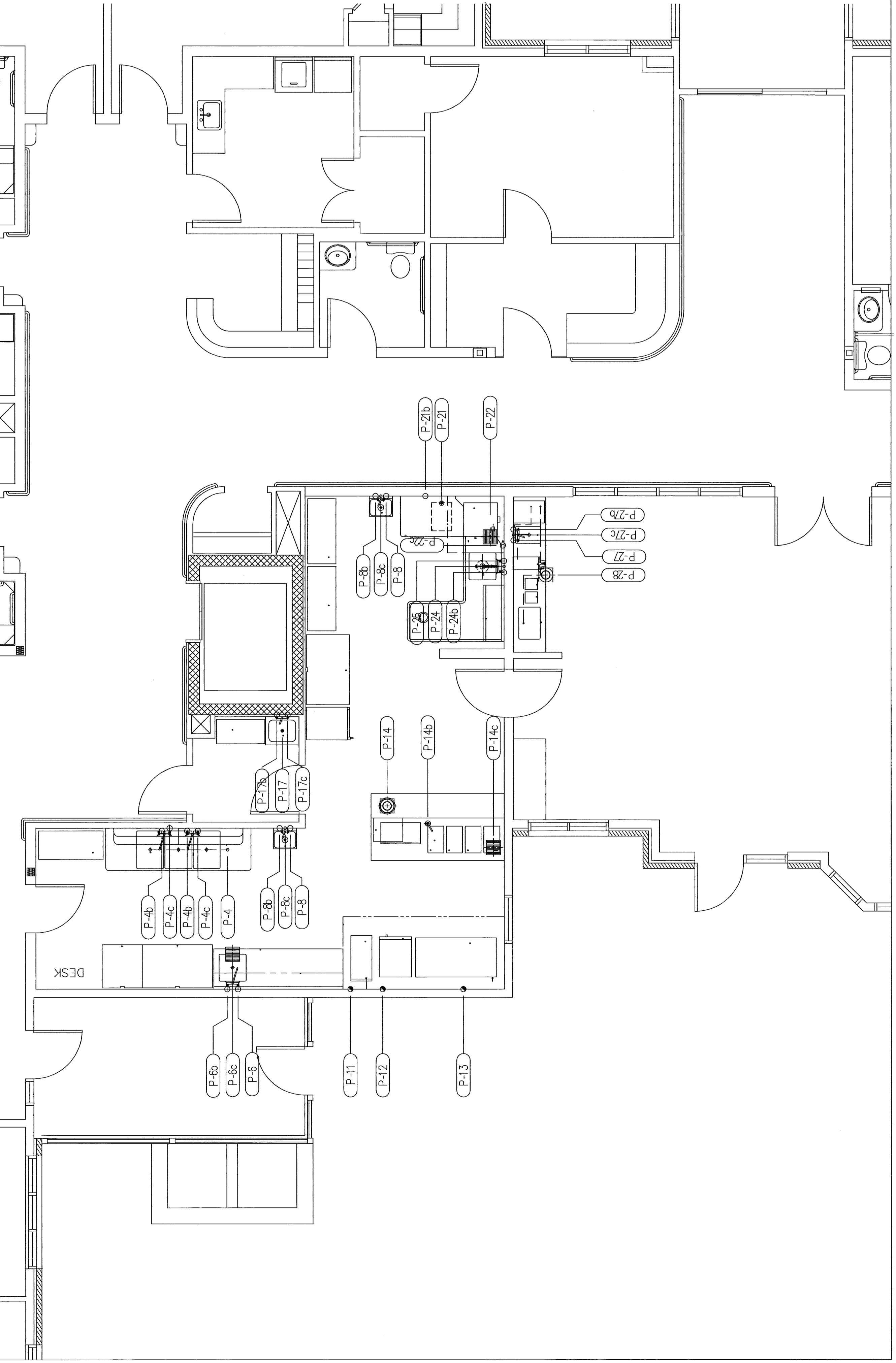
- E-2 208-115-V, 1-PH SERVICE, 1/2-HP, 11.5 FL. AMPS, STUB OUT WALL AT 7'-0" AFF AND CONNECT AT ITEM 2, FREEZER, 1-SECTION.
- E-3 120-V, 1-PH SERVICE, 1/3-HP, 10.4 FL. AMPS, STUB OUT WALL AT 7'-0" AFF AND CONNECT AT ITEM 3, REFRIGERATOR, 2-SECTION.
- E-10 120-V, 1-PH SERVICE, 0.3-KW, 2.5 FL. AMPS, SUBFLOOR CEILING EXHAUST FAN (ARTIS) CONNECT AT 11'-0" AFF AND CONNECT AT ITEM 12, STEAMER.
- E-13 (2) 120-V, 1-PH SERVICE, 1/4-HP, DUPLEX ELECTRICAL OUTLET AT 1'-2" AFF FOR SERVICE TO ITEM 13, RANGE, MEDIUM DUTY GAS.
- E-14 208-V, 1-PH SERVICE, 0.62-KW, 3 FL. AMPS, CHEF'S COUNTER (SOLID CONNECT AT ITEM 14, CHEF'S COUNTER, 1-KW, 8.3 FL. AMPS, STUB OUT WALL AT 5'-2" AFF AND CONNECT AT ITEM 14, CHEF'S COUNTER, (HEAT LAMP)
- E-14c 208-V, 1-PH SERVICE, 1/4-HP, 10 FL. AMPS, STUB OUT WALL AT 1'-2" AFF AND CONNECT AT ITEM 14, CHEF'S COUNTER, (HOT FOOD WELLS)
- E-14d 120-V, 1-PH SERVICE, 1/4-HP, 10 FL. AMPS, STUB OUT WALL AT 1'-2" AFF AND CONNECT AT ITEM 4, CHEF'S COUNTER (SOLID CONNECT UNIT)
- E-15 120-V, 1-PH SERVICE, 2.25-KW FLOOR STUB UP 4'-2" AFF AND CONNECT AT ITEM 15, OVEN, MICROWAVE.
- E-18 120-V, 1-PH SERVICE, 1-KW, 8.3 FL. AMPS, DUPLEX ELECTRICAL OUTLET AT 4'-2" AFF FOR CABINET, TO ITEM 18, HEATED HOLDING
- E-19 208-V, 1-PH SERVICE, 2 1/2-HP, 19 FL. AMPS, STUB OUT WALL AT 1'-2" AFF AND CONNECT AT ITEM 19, REFRIGERATOR, 2-SECTION.
- E-21 208-V, 3-PH SERVICE, 15-KW, STUB OUT WALL AT 1'-2" AFF AND CONNECT AT ITEM 21, BOOSTER HEATER.
- E-22 208-V, 3-PH SERVICE, 5-KW, 1HP, 23.9 FL. AMPS, STUB OUT WALL AT 1'-2" AFF AND CONNECT AT ITEM 22, DISHWASHER, DOOR-TYPE.
- E-24 208-V, 3-PH SERVICE, 1HP, 2.2 FL. AMPS, STUB OUT WALL AT 1'-2" AFF AND CONNECT AT ITEM 24, DISPOSER.
- E-28 120-V, 1-PH SERVICE, 8.5 FL. AMPS, DUPLEX ELECTRICAL OUTLET AT 4'-2" AFF FOR SERVICE TO ITEM 28, ICE MAKER/DISPENSER.
- E-29 120-208-V, 1-PH SERVICE, 3.9-KW, 8.6 FL. AMPS, STUB OUT WALL AT 1'-2" AFF AND CONNECT AT ITEM 29, COFFEE BREWER.
- E-31 120-V, 1-PH SERVICE, 0.9-KW, 0.75 FL. AMPS, DUPLEX ELECTRICAL OUTLET AT 4'-2" AFF FOR SERVICE TO ITEM 31, COFFEE WARMER.
- C.O. 120-V, 1-PH SERVICE, 20.0 FL. AMPS, DUPLEX ELECTRICAL OUTLET AT 4'-2" AFF FOR SERVICE TO CONVENIENCE OUTLET.

- LEGEND — ELECTRICAL CONNECTIONS**
- DUPLEX RECEPT., 20-AMP, 120-VOLT, GROUND TYPE, HORIZONTAL MOUNT
 - SIMPLEX RECEPT., 20-AMP, 120-VOLT, GROUND TYPE, HORIZONTAL MOUNT
 - SPECIAL PURPOSE OUTLET, 120-VOLT, GROUND TYPE, HORIZONTAL MOUNT
 - SPECIAL PURPOSE OUTLET, 208/240-VOLT AS INDICATED, GROUND TYPE, HORIZONTAL MOUNT
 - JUNCTION BOX
 - ELECTRICAL CONDUIT, STUB AS INDICATED FOR DIRECT CONNECTION
 - FLOOR/CEILING RECEPTACLE AS INDICATED
 - FIELD WIRING, EXPOSED RIGID WATERTIGHT CONDUIT
 - - - FIELD WIRING, CONCEALED IN WALL, FLOOR, OR CEILING



PLUMBING CONNECTION SCHEDULE

- P-4 2" DRAIN, STUB AT 23"-BELOW FINISH 3-COMPARTMENT AT 4, SINK.
- P-4b 1/2" HOT WATER, STUB OUT WALL AT 1'-2" AFF AND CONNECT AT ITEM 4, SINK, 3-COMPARTMENT.
- P-4c 1/2" COLD WATER, STUB OUT WALL AT 1'-2" AFF AND CONNECT AT ITEM 4, SINK, 3-COMPARTMENT.
- P-6 1/2" HOT WATER, STUB OUT WALL AT 1'-2" AFF AND CONNECT AT ITEM 6, WORK TABLE W/SINK.
- P-6b 1/2" COLD WATER, STUB OUT WALL AT 1'-2" AFF AND CONNECT AT ITEM 6, WORK TABLE W/SINK.
- P-6c FLOOR SINK, HALF-GRATE, 2" INDIRECT WASTE FROM ITEM 6, WORK TABLE W/SINK.
- P-8 1/2" COLD WATER, STUB OUT WALL AT 1'-2" AFF AND CONNECT AT ITEM 8, HAND SINK.
- P-8b 1/2" HOT WATER, STUB OUT WALL AT 1'-2" AFF AND CONNECT AT ITEM 8, HAND SINK.
- P-8c 1-1/2" DIRECT WASTE HUB, STUB OUT WALL AT 2'-0" AFF AND CONNECT AT 8, HAND SINK.
- P-11 3/4" GAS SUPPLY, 110-MBTUH, STUB OUT WALL AT 3'-0" AFF AND CONNECT AT ITEM 11, FRYER.
- P-12 1.2" GAS SUPPLY, 26-MBTUH, STUB OUT WALL AT 3'-0" AFF AND CONNECT AT ITEM 12, WALKER.
- P-13 3/4" GAS SUPPLY, 214-MBTUH, STUB OUT WALL AT 3'-0" AFF AND CONNECT AT ITEM 13, RANGE, MEDIUM DUTY GAS.
- P-14 FUNNEL TYPE FLOOR DRAIN, 1/2" INDIRECT WASTE FROM ITEM 14, CHEF'S COUNTER.
- P-14b 1/2" HOT WATER, STUB UP 4" AND CONNECT AT ITEM 14, CHEF'S COUNTER.
- P-14c FLOOR SINK, THREE-QUARTER GRATE, 3/4" INDIRECT WASTE FROM ITEM 14, CHEF'S COUNTER.
- P-17 CONDULE DRAIN, STUB UP 4" AFF, 1-1/2" SINK.
- P-17b 1/2" HOT WATER, STUB OUT WALL AT 3'-0" AFF AND CONNECT AT ITEM 17, MOP SINK.
- P-17c 1/2" COLD WATER, STUB OUT WALL AT 3'-0" AFF AND CONNECT AT ITEM 17, MOP SINK.
- P-21 3/4"PT OUTLET TO DISHWASHER.
- P-21b 3/4" HOT WATER, STUB OUT WALL AT 1'-0" AFF AND CONNECT AT ITEM 21, BOOSTER HEATER.
- P-22 FLOOR SINK, THREE-QUARTER GRATE, 2" INDIRECT WASTE FROM ITEM 22, DISHWASHER, DOOR-TYPE.



TJM Consulting
Foodservice Consultant
 P.O. Box 6
 Liberty, Maine 04949
 (207) 589-3070

Rev/Date	No.	Date
Hud Firm Commitment	3	11-22-06

THE INN
 AT
 CEDARS
 PORTLAND, MAINE

FOODSERVICE EQUIPMENT
 ELECTRICAL & PLUMBING
 CONNECTION PLANS

Tsomidis Associates
 Architects and Planners
 389 Elliot Street
 Newton Upper Falls, MA 02464
 (617) 993-4774 Fax (617) 969-4793
 e-mail: info@tsomidis.com www.tsomidis.com

Drawn By	TJM
DATE PLOTTED	11-22-06
SCALE	1/4"=1'-0"
DRAWING NUMBER	

FS-4