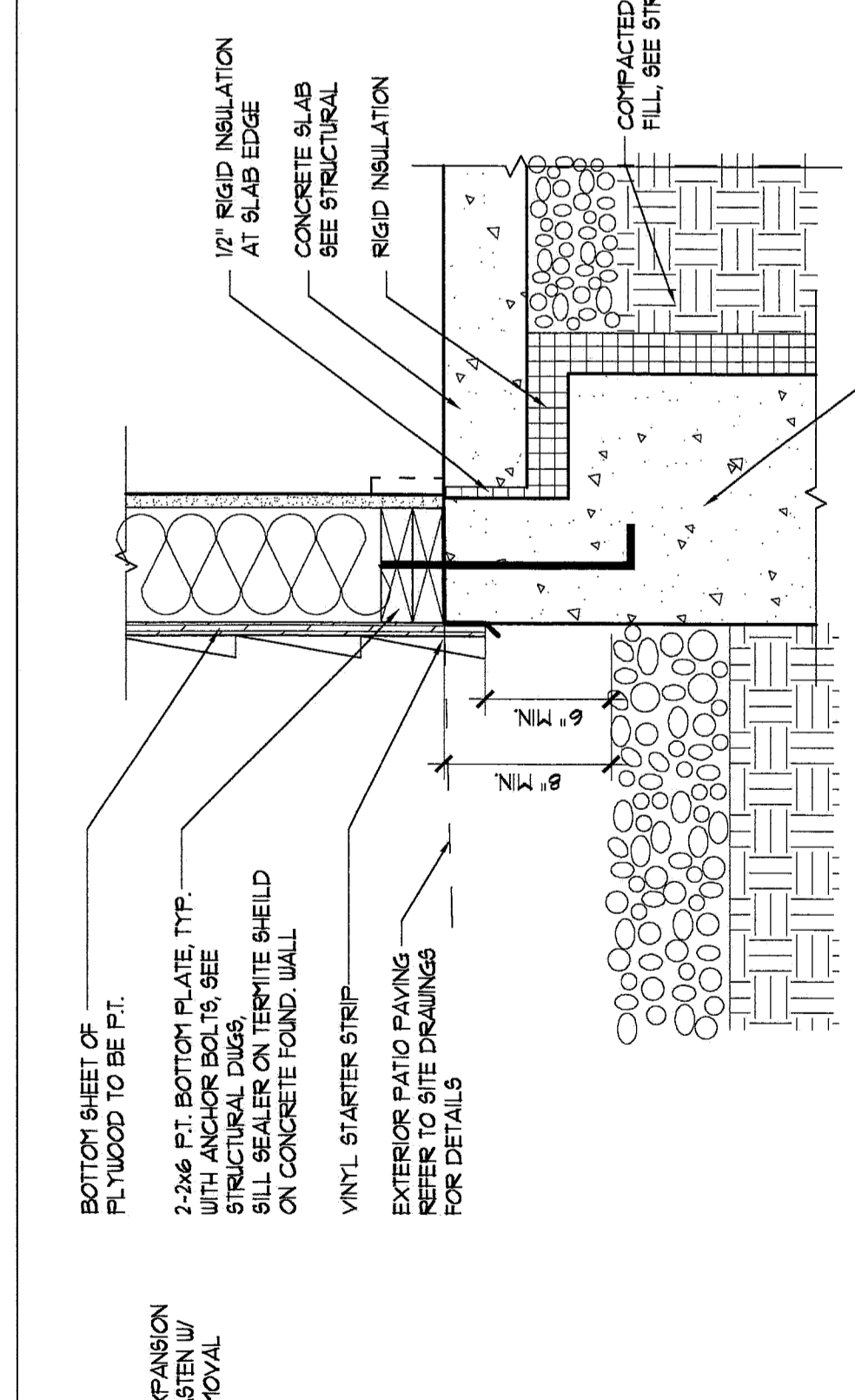


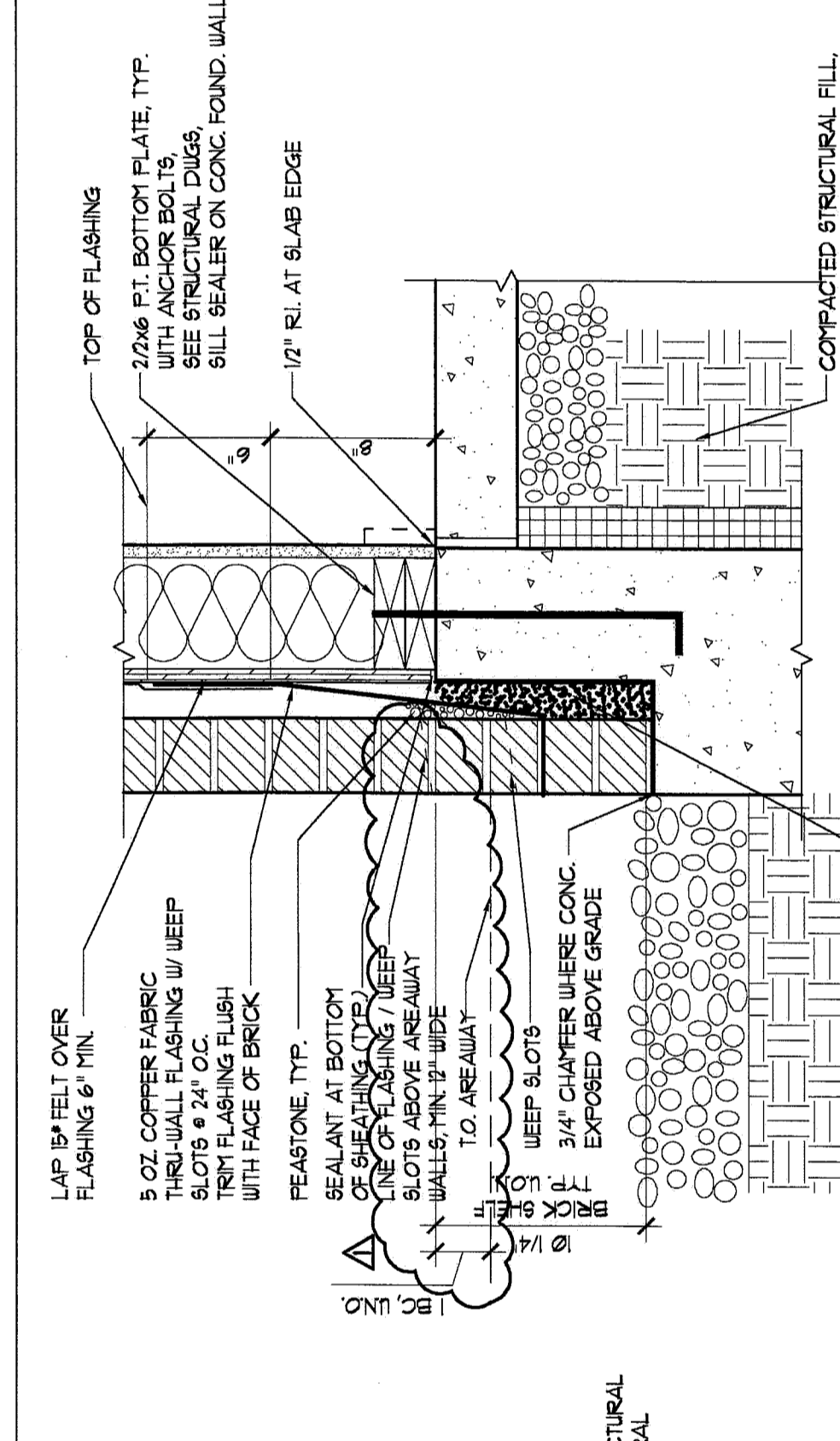
**1 PAVING CONTROL JOINT (ON GRADE)**  
SCALE: 1-1/2"=1'-0"

NOTES:  
-INSTALL SAMPLE OF CONCRETE WALK PAVEMENT FOR ARCHITECT'S APPROVAL  
-DO NOT USE CONCRETE DURING COLD OR WET WEATHER CONDITIONS  
-SEE PLAN DRAWING FOR SCORING PATTERN AND EXPANSION JOINT LOCATIONS



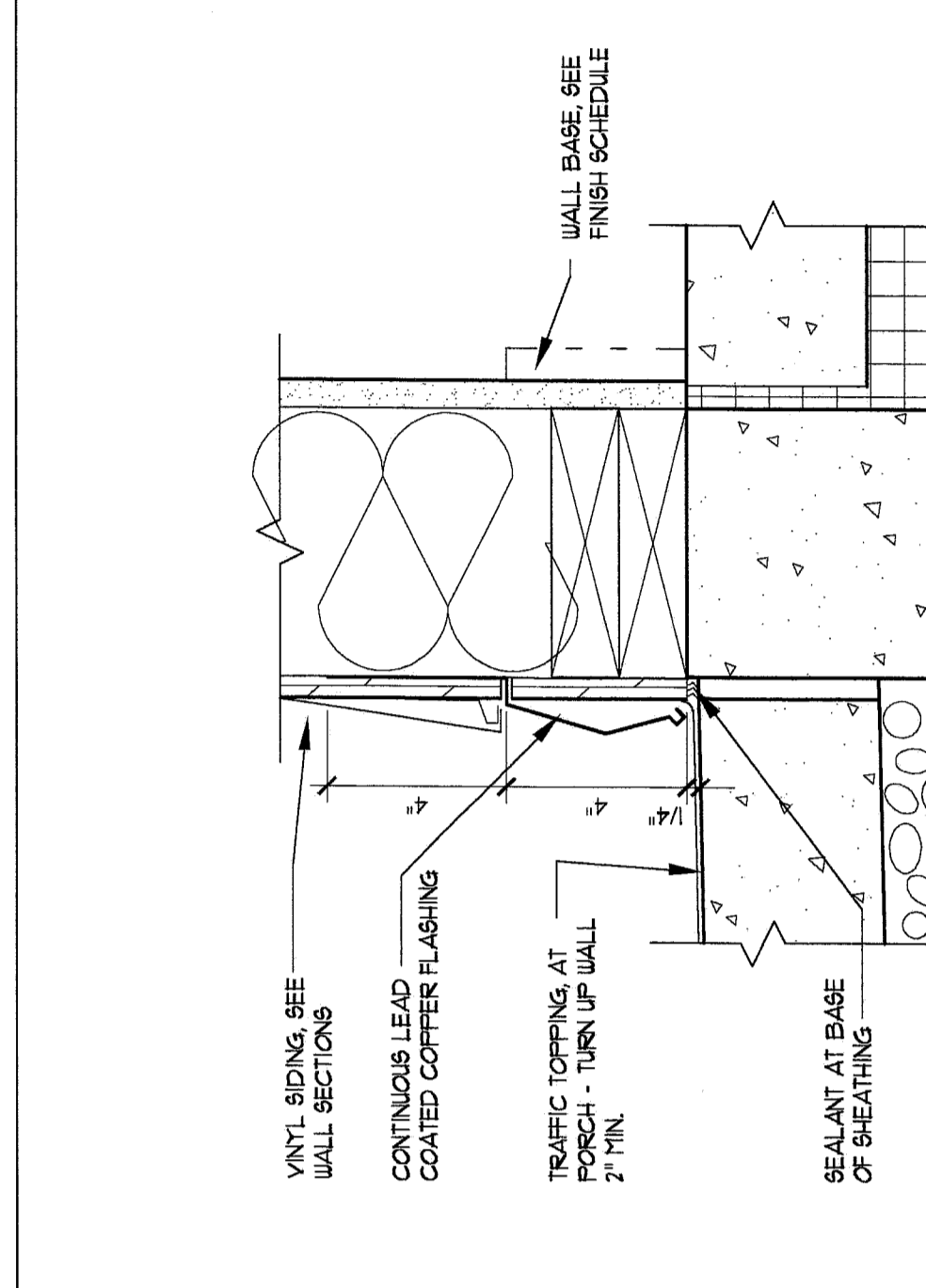
**2 TYP. FOUNDATION DETAIL AT WOOD FRAME**  
SCALE: 1-1/2"=1'-0"

NOTE: SEE TYPICAL WALL SECTION AND REFERENCES WALL SECTION FOR TERS NOT NOTED.



**3 TYP. FOUND. DETAIL AT BRICK**  
SCALE: 1-1/2"=1'-0"

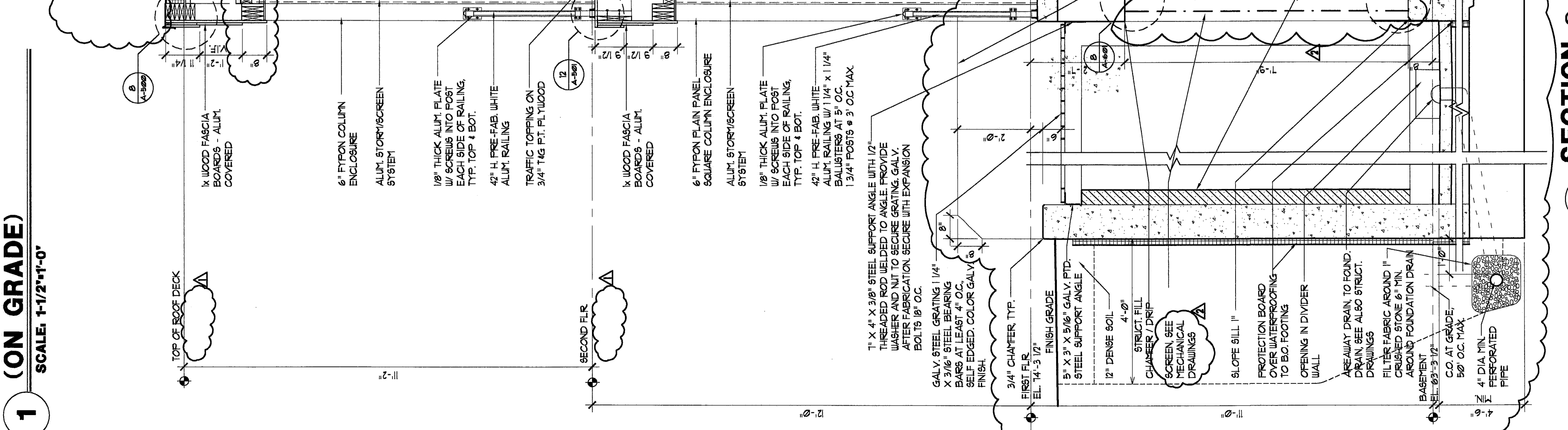
NOTE: SEE TYPICAL WALL SECTION AND REFERENCES WALL SECTION FOR TERS NOT NOTED.



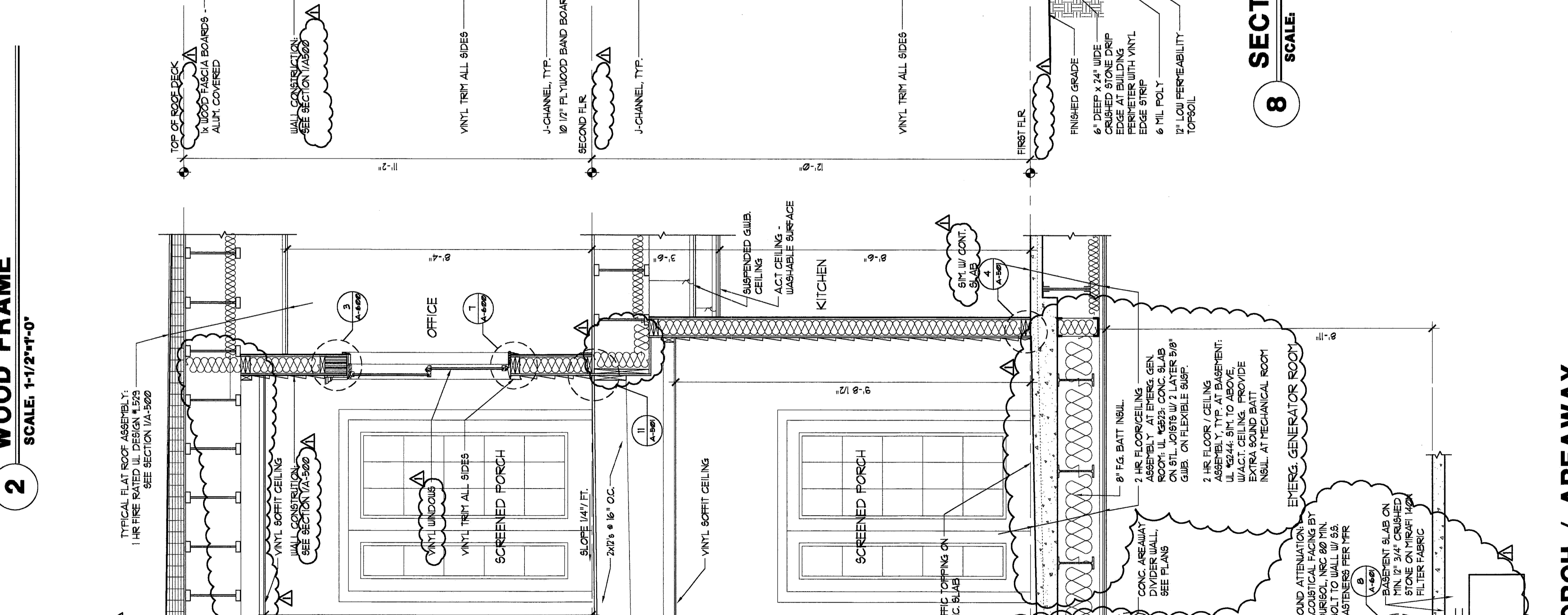
**4 WALL BASE DETAIL - VINYL SIDING AT SLAB**  
SCALE: 3"=1'-0"



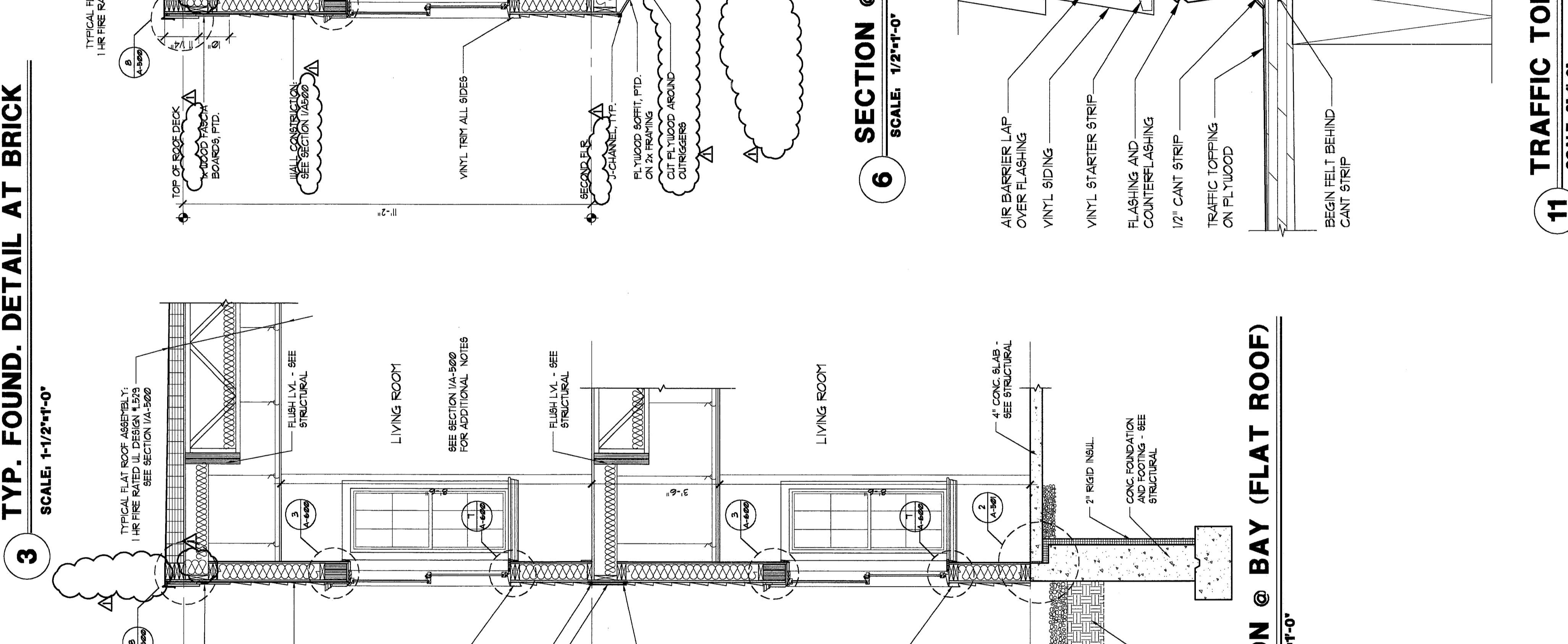
**5 NOT USED**



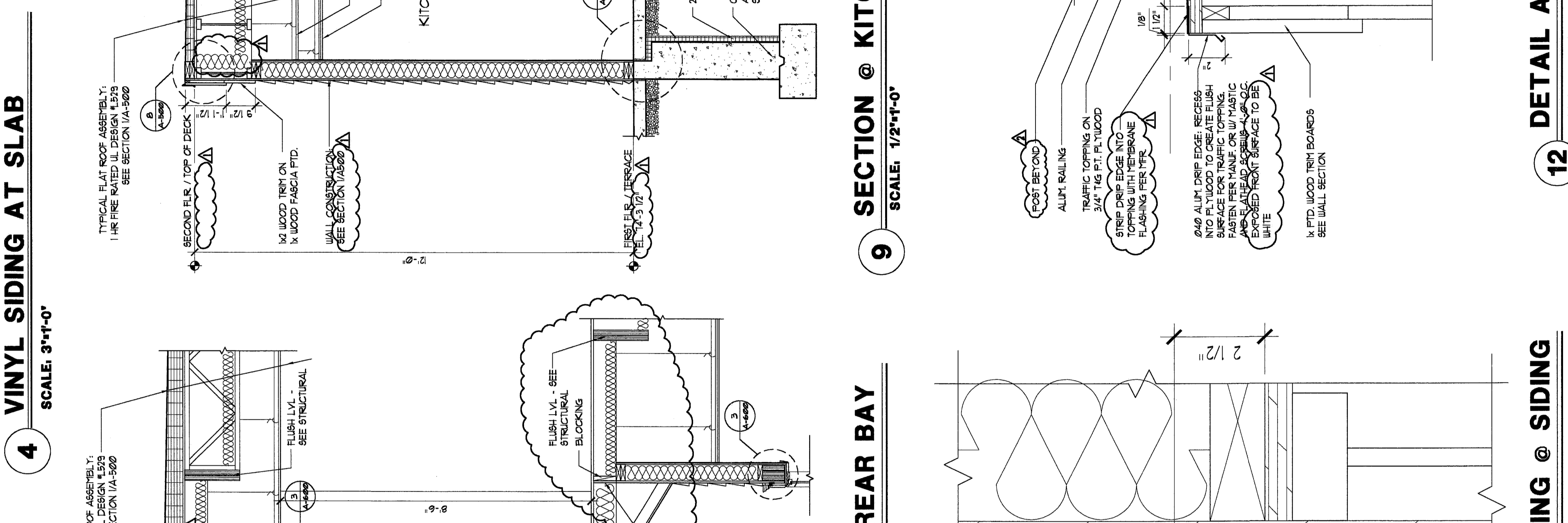
**7 SECTION @ PORCH / AREAWAY**  
SCALE: 1/2"=1'-0"



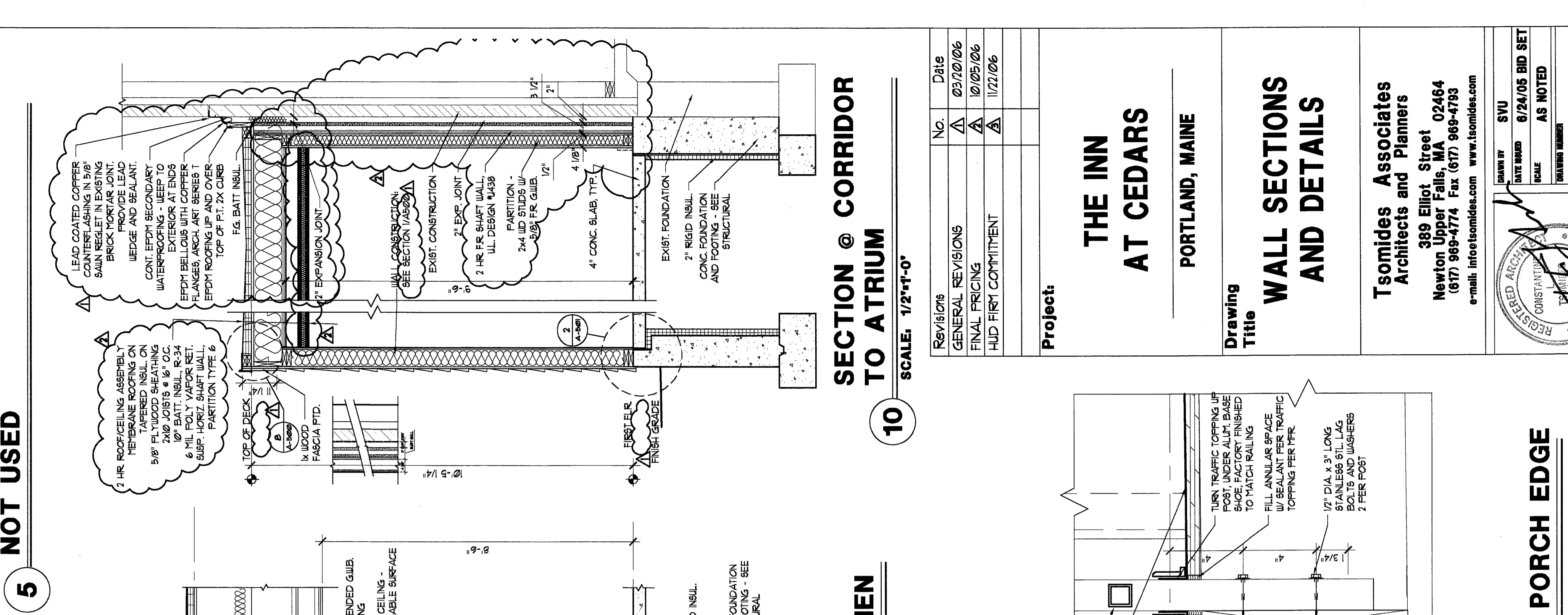
**8 SECTION @ BAY (FLAT ROOF)**  
SCALE: 1/2"=1'-0"



**6 SECTION @ REAR BAY**  
SCALE: 1/2"=1'-0"



**9 SECTION @ KITCHEN**  
SCALE: 1/2"=1'-0"



**10 SECTION @ CORRIDOR TO ATRIUM**  
SCALE: 1/2"=1'-0"

NO.	DATE
1	03/20/06
2	10/05/06
3	11/22/06

REVISIONS  
GENERAL REVISIONS  
FINAL PRICING  
H/D FIRST COMMITMENT

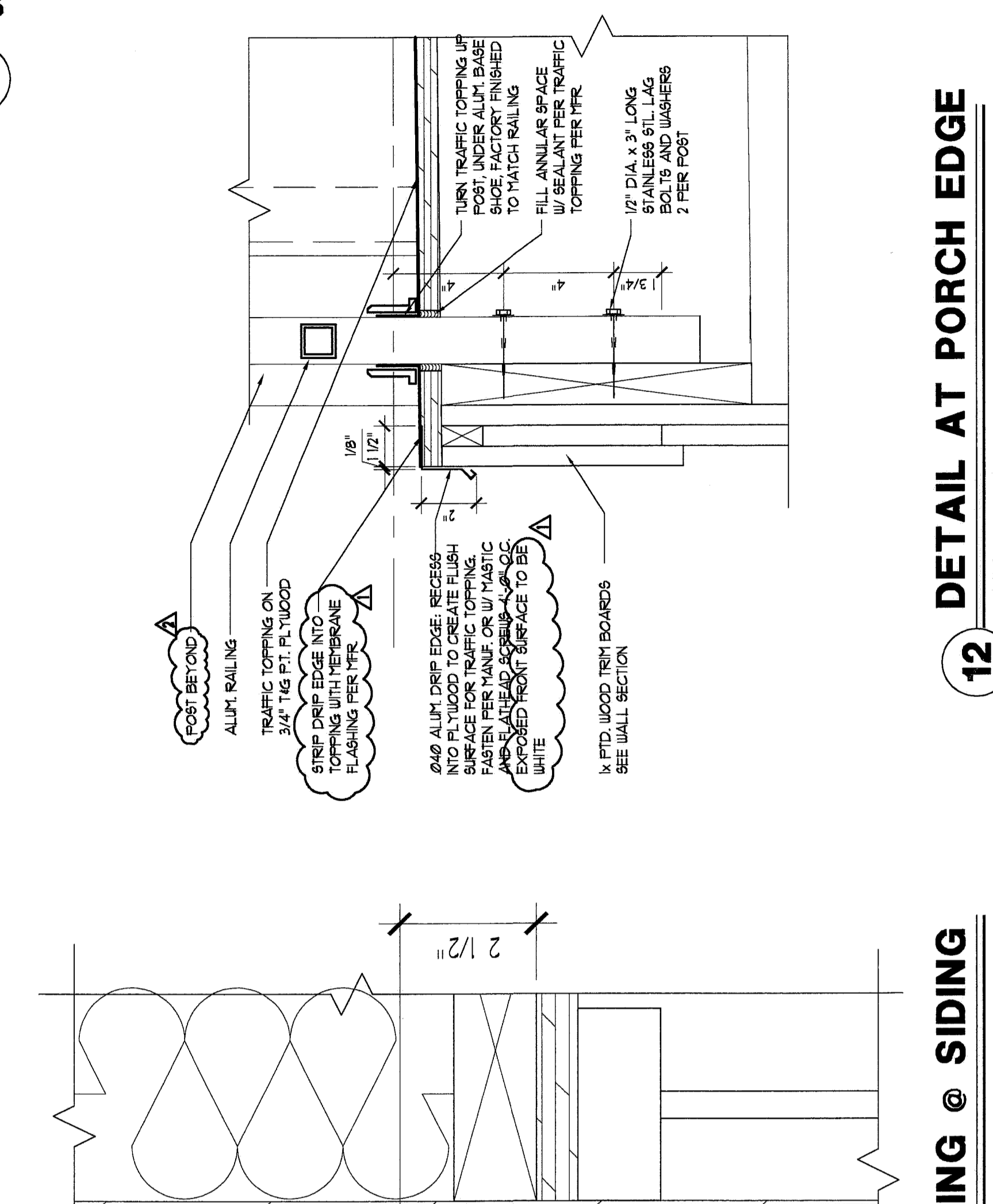
Project: **THE INN AT CEDARS**  
PORTLAND, MAINE

Drawing Title: **WALL SECTIONS AND DETAILS**

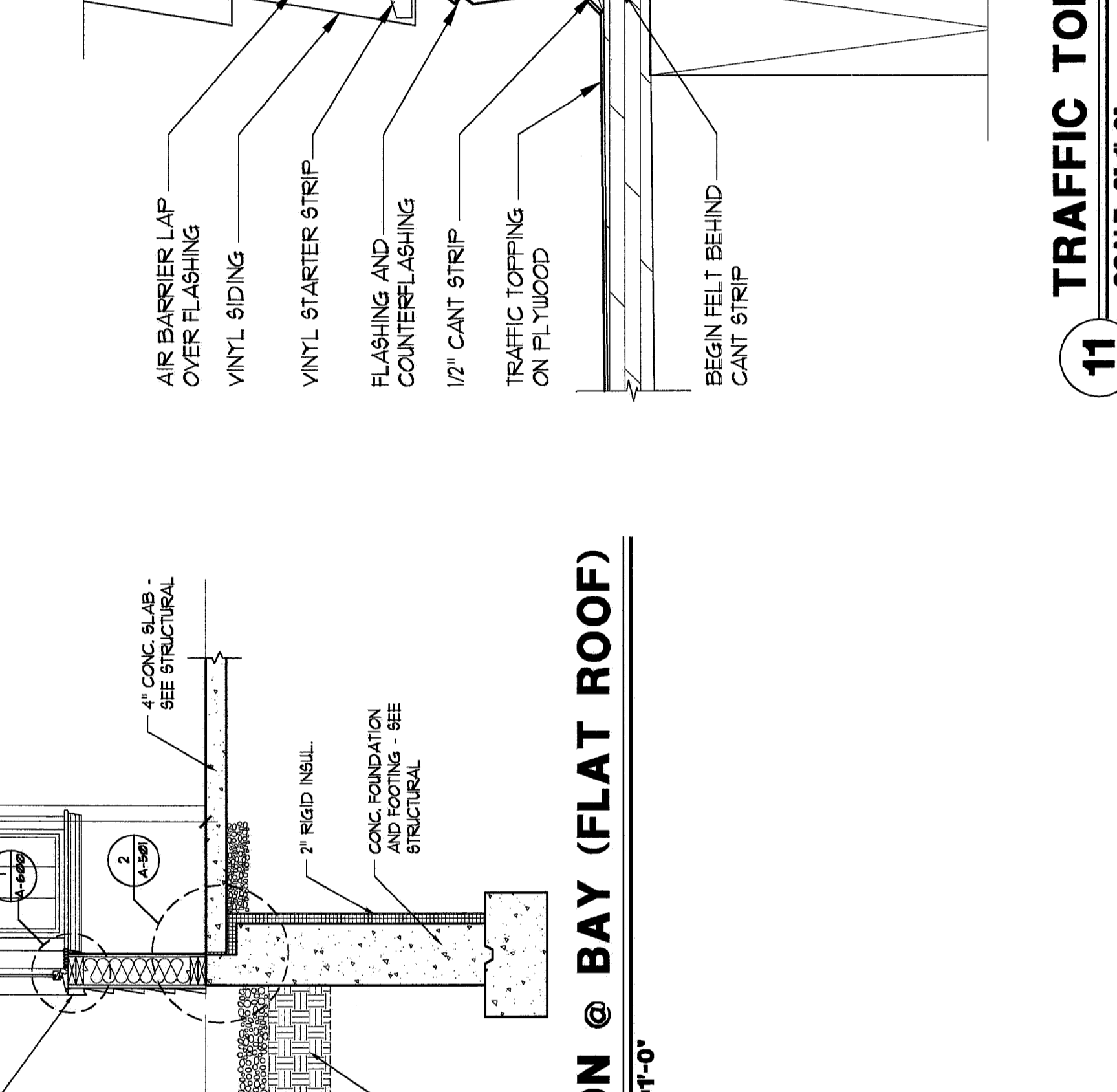
Tsomidis Associates Architects and Planners  
389 Elliot Street  
Newton Upper Falls, MA 02464  
(617) 969-4774 Fax (617) 969-4793  
e-mail: info@tsomidis.com www.tsomidis.com

SCALE: 3/4"=1'-0" SET  
AS NOTED

**A-501**



**11 DETAIL AT PORCH EDGE**  
SCALE: 3"=1'-0"



**12 TRAFFIC TOPPING @ SIDING**  
SCALE: 3"=1'-0"