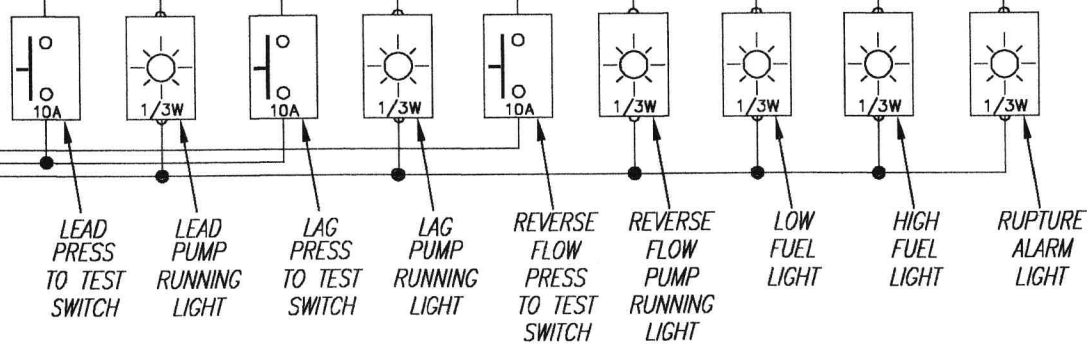
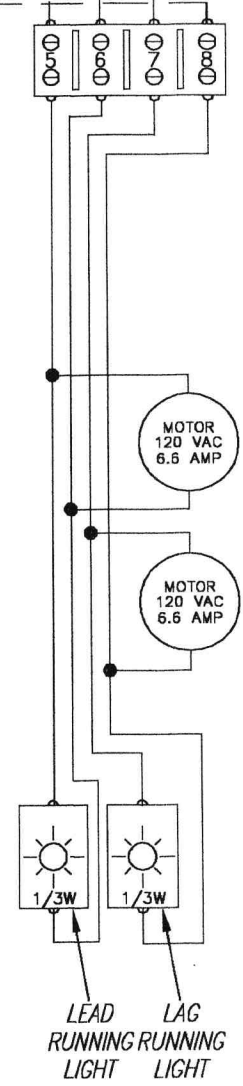
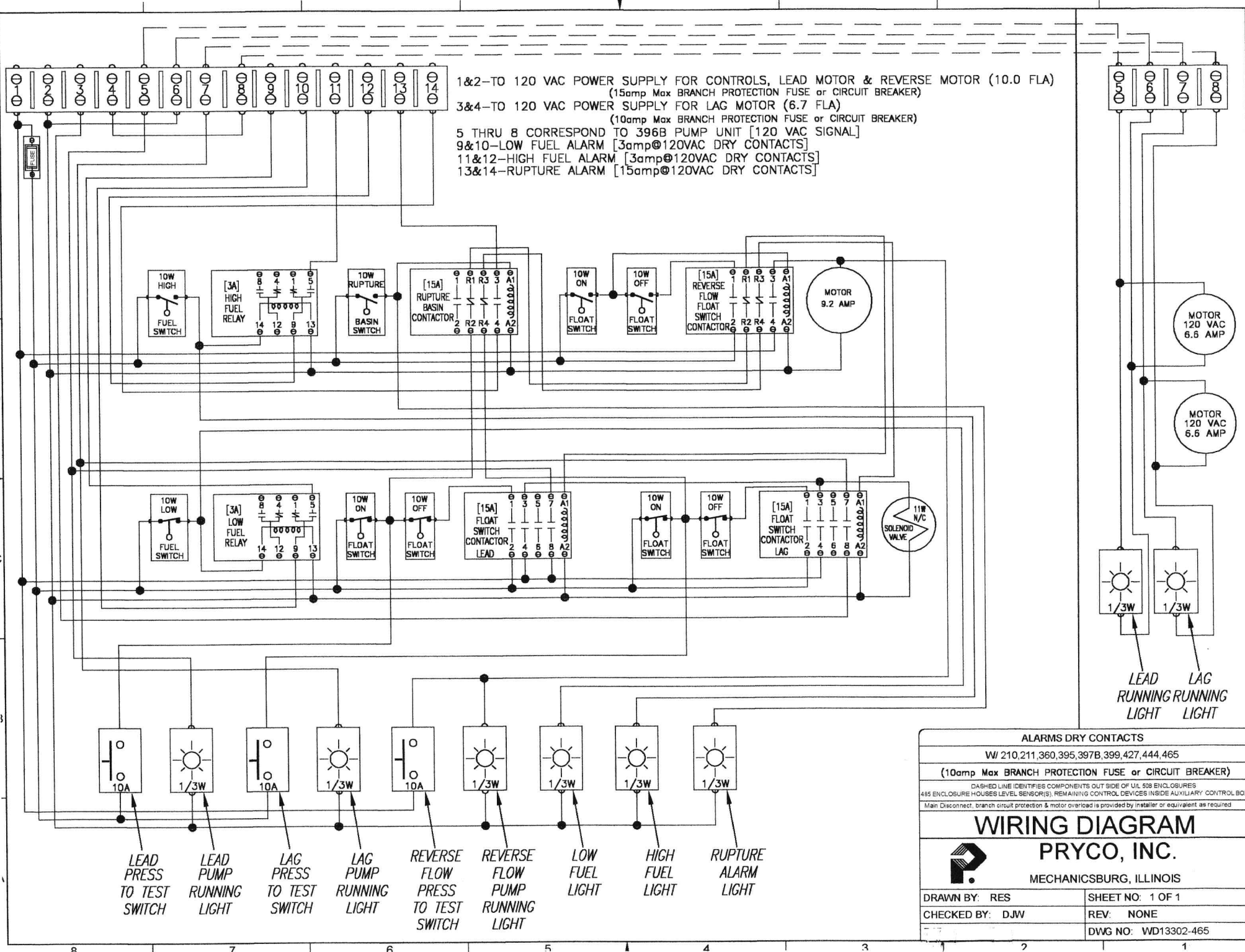


1&2-TO 120 VAC POWER SUPPLY FOR CONTROLS, LEAD MOTOR & REVERSE MOTOR (10.0 FLA)
 (15amp Max BRANCH PROTECTION FUSE or CIRCUIT BREAKER)
 3&4-TO 120 VAC POWER SUPPLY FOR LAG MOTOR (6.7 FLA)
 (10amp Max BRANCH PROTECTION FUSE or CIRCUIT BREAKER)
 5 THRU 8 CORRESPOND TO 396B PUMP UNIT [120 VAC SIGNAL]
 9&10-LOW FUEL ALARM [3amp@120VAC DRY CONTACTS]
 11&12-HIGH FUEL ALARM [3amp@120VAC DRY CONTACTS]
 13&14-RUPTURE ALARM [15amp@120VAC DRY CONTACTS]



ALARMS DRY CONTACTS
 W/ 210,211,360,395,397B,399,427,444,465
 (10amp Max BRANCH PROTECTION FUSE or CIRCUIT BREAKER)
DASHED LINE IDENTIFIES COMPONENTS OUTSIDE OF U/L 508 ENCLOSURES
 485 ENCLOSURE HOUSES LEVEL SENSOR(S). REMAINING CONTROL DEVICES INSIDE AUXILIARY CONTROL BOX
 Main Disconnect, branch circuit protection & motor overload is provided by installer or equivalent as required

WIRING DIAGRAM
PRYCO, INC.
 MECHANICSBURG, ILLINOIS

DRAWN BY: RES	SHEET NO: 1 OF 1
CHECKED BY: DJW	REV: NONE
	DWG NO: WD13302-465