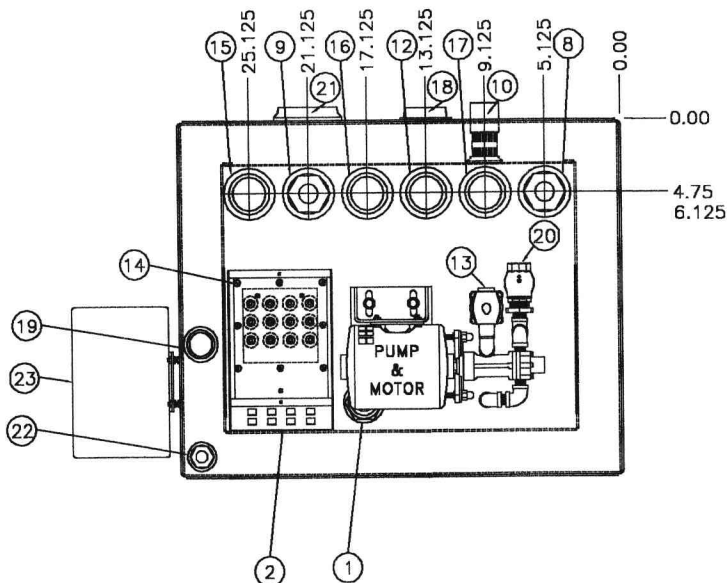


PLAN VIEW
(SCALE: 2X)



DESCRIPTION OF FITTINGS

1	1 1/2" NPT FOR FUEL LEVEL GAUGE
2	U/L LISTED & ENCLOSED INDUSTRIAL CONTROL PANEL
3	REMOVABLE COVER
4	1/2" MOUNTING HOLE TO FLOOR
5	C3 x 4.1# STRUCTURAL CHANNEL LEG
6	FUEL INLET THRU COVER
7	ELECTRICAL INLET THRU COVER
* 8	2" x 1/2" NPT ENGINE FUEL SUPPLY W/PIPE STEM
* 9	2" x 1/2" NPT ENGINE FUEL RETURN W/PIPE STEM
10	1" NPT OVERFLOW TO MAIN STORAGE TANK
11	1/2" NPT DRAIN FOR TANK W/DROP TUBE (PLUGGED)
12	2" NPT VENT FOR TANK TO ATMOSPHERE
13	1/2" NPT FUEL INLET TO SOLENOID VALVE & TANK
14	INSPECTION PLATE W/CONTACTORS & FLOAT SWITCHES
15	2" NPT EXTRA FITTING
16	2" NPT U/L EMERGENCY RELIEF VENT FOR TANK
17	2" NPT EXTRA FITTING
18	2" NPT VENT FOR DOUBLE WALL TO ATMOSPHERE
19	1 1/4" NPT DOUBLE WALL INSPECTION FITTING
20	1" NPT FUEL OUTLET FROM CHECK VALVE & PUMP
21	2" NPT EMERGENCY RELIEF VENT FOR DOUBLE WALL
22	1" x 1/2" NPT FOR LEAK DETECTOR SWITCH
23	CONTROL ENCLOSURE

CONSTRUCTION NOTES

TANK TOP, BOTTOM & SHELL - 12 GAUGE STEEL
 C3 x 4.1# STRUCTURAL CHANNEL LEG
 1/2" MOUNTING HOLE TO FLOOR (TYP. 4X)
PY50 U/L LISTED DOUBLE WALL DAY TANK
 W/ 355B,360,399,400,444,464,465



DRAWN BY: RES	SEE DRAWING: NONE
CHECKED BY: DJW	SCALE: 1=25
	DWG. NUMBER: P0050d119