

	45 MINUTE, C SINGLE	45 MINUTE, C PAIRS ① ②	60 MINUTE, B SINGLE		60 MINUTE, B PAIRS ① ②	90 MINUTE, B SINGLE	90 MINUTE, B PAIRS ① ②
THICKNESS	1-3/4"-2-1/4"	1-3/4"-2-1/4"	1-3/4"-2-1/4"		1-3/4"-2-1/4"	1-3/4"-2-1/4"	1-3/4"-2-1/4"
MAXIMUM SIZE	4' 0" x 10' 0"	Double Egress: 8' 0" x 8' 0" One or two leaves active: 8' 0" x 9' 0"	4' 0" x 9' 0"		Double Egress: 8' 0" x 8' 0" One or two leaves active: 8' 0" x 9' 0"	4' 0" x 9' 0"	Double Egress: 8' 0" x 8' 0" One or two leaves active: 8' 0" x 8' 0" Surface vertical rods: 8' 0" x 9' 0"
MAXIMUM DOOR & TRANSOM NON-RABBETED ③	4' 0" x 11' 0" wood veneer, MDO or HPL (Maximum transom size 4' 0" x 4' 0") Door and transoms must be separated by horizontal transom bar.				4' 0" x 11' 0" wood veneer, MDO or HPL (Maximum transom size 4' 0" x 4' 0") Doors and transoms must be separated by horizontal transom bar.		
		Individual transoms must be separated by vertical and horizontal transom bars.			Individual transoms must be separated by vertical and horizontal transom bar.		Individual transoms must be separated by vertical and horizontal transom bar.
MAXIMUM DOOR & TRANSOM, RABBETED ④	Wood veneer, MDO or HPL-3' 6" x 10' 0" ⑤	Not available.	Wood veneer, MDO or HPL-3' 6" x 10' 0" ⑤		Not available.	Wood veneer, MDO or HPL-3' 6" x 10' 0" ⑤	Not available.
STILES	1/4" outer-ply compatible or same species as face veneer. Reinforcing inner ply. ⑥ Special stiles may have HPL or wood veneer. PVC edges not available on label doors.				1/4" outer-ply compatible or same species as face veneer. Reinforcing inner ply. ⑥ Special stiles may have HPL or wood veneer. PVC edges not available on label doors.		
RAILS	Top—Minimum 1/2" mill option. Bottom—Minimum 1-1/2" mill option.				Top—Minimum 1/2" mill option. Bottom—Minimum 1-1/2" mill option.		
REINFORCEMENTS	Optional 5" x full core width top, middle and bottom reinforcing, 5" x 10" std. latchcase and bolt reinforcing, or blocking as specified.				Optional 5" x full core width top, middle and bottom reinforcing, 5" x 10" std. latchcase and bolt reinforcing, or blocking as specified.		
FACES	All available domestic and foreign veneers. Medium-density overlays (MDO) over standard hardwood veneers. HPL in .050 and .062				All available domestic and foreign veneers. Medium-density overlays (MDO) over standard hardwood veneers. HPL in .050 and .062.		
CROSSBANOS	Minimum 1/16" high-density hardboard.				Minimum 1/16" high-density hardboard.		
VISION PANELS ⑦ ⑧ VENEERED WOOD BEAD	Up to 1296 sq. in., maximum 36" wide, maximum 54" high ⑨ Special construction glass can be maximum 1714 sq. in., maximum 36" wide, maximum 86-1/2" high		Up to 1296 sq. in., maximum ⑩ ⑪ Maximum 54" high		Up to 1296 sq. in., maximum, maximum 54" high ⑩ ⑪		
LOUVERS	Up to 24" x 24" ⑫ (not available in doors with lites)				Up to 24" x 24" ⑫ (not available in doors with lites)		
LOCKSETS	Listed and approved mortise, cylindrical, or unit locks for up to 1 1/2 hr. 5" backsets on HPL doors only. Deadbolts minimum 6" above latch.				Listed and approved mortise, cylindrical, or unit locks for up to 1 1/2 hr. 5" backsets on HPL doors only. Deadbolts minimum 6" above latch.		
HINGES	Per NFPA #80 and agency approvals. Offset pivots in reinforced doors only.				Per NFPA #80 and agency approvals. Offset pivots in reinforced doors only.		
TOP & BOTTOM BOLTS	Not available.	Listed surface, manual extension (maximum 24") & automatic bolts.	Not available.		Listed surface, manual extension (maximum 24") & automatic bolts.	Not available.	Listed surface, manual extension (maximum 24") & automatic bolts.
FIRE EXIT HARDWARE	Listed and approved fire exit hardware. Reinforced blocking options available for screw mounting (minimum #10 x 1-1/2" sheet metal screws). No prep for surface mounted. No metal edges on 2 leaf active up to 8' 0" x 9' 0", LBR available.				Listed and approved fire exit hardware. Reinforced blocking options available for screw mounting (minimum #10 x 1-1/2" sheet metal screws). No prep for surface mounted. No metal edges on 2 leaf active up to 8' 0" x 9' 0", LBR available.		
CLOSERS, STOPS, HOLDERS	Listed surface mounted closers. Concealed closers, holders and stops not exceeding 23-3/4" x 1-1/2" deep x 1-3/8" wide.				Listed surface mounted closers. Concealed closers and stops not exceeding 23-3/4" x 1-1/2" deep x 1-3/8" wide.		
DROP SEAL	Listed and approved.				Listed and approved.		
SPECIAL DETAILS	Cut for lite and louver openings ⑬. Install glazing and metal louvers ⑭. Applied moldings per approvals. Stile and rail sketch faces for applied moldings. Wood veneer wrapped metal edges and rabbets. Kick plates up to 48". Solid wood grillwork available. Reveals (grooves) up to 3/8" wide and 3/8" deep.				Cut for lite and louver openings ⑬. Install glazing and metal louvers ⑭. Applied moldings per approvals. Stile and rail sketch faces for applied moldings. Wood veneer wrapped metal edges and rabbets. Kick plates up to 48". Solid wood grillwork available. Reveals (grooves) up to 3/8" wide and 3/8" deep.		
FINISHING	Gardall UV, primed, painted (MDO only), sealer, full sealer, catalyzed polyurethane, and opaque varnish.				Gardall UV, primed, painted (MDO only), sealer, full sealer, catalyzed polyurethane, and opaque varnish.		
WARRANTY	Life of installation. Not suitable for exterior installations.				Life of installation. Not suitable for exterior installations.		
STANDARDS	WDMA I.S.-1-A-04 FD-5, AWI Section 1300 8th edition FD, NFPA 252, UL10B, UL10C, NFPA 80, UBC 7-2 (1997)				WDMA I.S.-1-A-04 FD-5, AWI Section 1300 8th edition FD, NFPA 252, UL10B, UL10C, NFPA 80, UBC 7-2 (1997)		

- ① Does not require metal meeting edges up to 8' 0" x 9' 0", with special construction. Concealed vertical rods not available in HPL
- ② One or two leaf active doors can have metal edges or astragals if required.
- ③ Opening must be separated by non-removable minimum 2" transom bar. Springbolts required for transom installation
- ④ The exposed meeting edge of the rabbeted door and transom is a white high density mineral board. May be wood veneer wrapped. Springbolts required for transom installation.
- ⑤ Minimum 6" margins edge of lite opening to adjacent cutouts for hardware and door edges. Warranty exclusions applicable. 3" Minimum lock-to-lite margin with special reinforced construction in 45 minute doors.
- ⑥ Lites over 100 square inches require firelite glass, doors do not qualify for temperature rise rating.
- ⑦ Veneer wrapped available for metal vision panels.
- ⑧ Doors will be manufactured and labeled in accordance with procedures and product approvals established by and between Eggers Industries, Warnock Hersey or Underwriters Laboratories.
- ⑨ Minimum 10" margins from edge of louver opening to bottom of door.
- ⑩ Divided lite bars for plastic laminate faced doors will be painted.

WDMA Duty Level Performance for Standard Constructions.

Test Method	Non-Rated & 20 Minute Fire Doors	45-90 Minutes Fire Doors
WDMA TM-7 Cycle/Slam	1 Million Cycles	1 Million Cycles
WDMA TM-8 Hingeloading	Extra Heavy Duty	Extra Heavy Duty
WDMA TM-10 Screw Withdrawal*	Extra Heavy Duty	Extra Heavy Duty

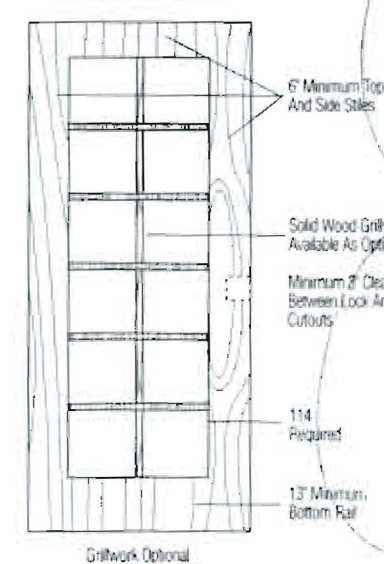
*Stile and end rail constructions meet extra heavy duty. Duty level of the core varies by core material.
Blocking available to meet extra heavy duty level.

(Consult factory for specialty constructions including acoustic, bullet-resistant and lead)

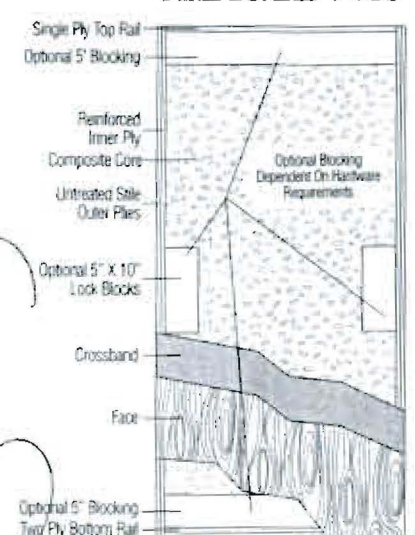
FIRE RATED PAIRS — NO METAL EDGES

- 45, 60 & 90 minute
- 8' 0" x 9' 0" maximum
- Flush and Stile & Rail
- Top & bottom rod or less bottom rod (LBR)
- Concealed vertical rod (8' 0" x 8' 0" max.)
- Double egress (8' 0" x 8' 0" max.) and standard swing
- Double egress and LBR require auxiliary fire latches
- One leaf active (3 point latching)
- All approved devices except Monarch and American

45 MINUTE FULL LITE DOOR SINGLE OR PAIRS

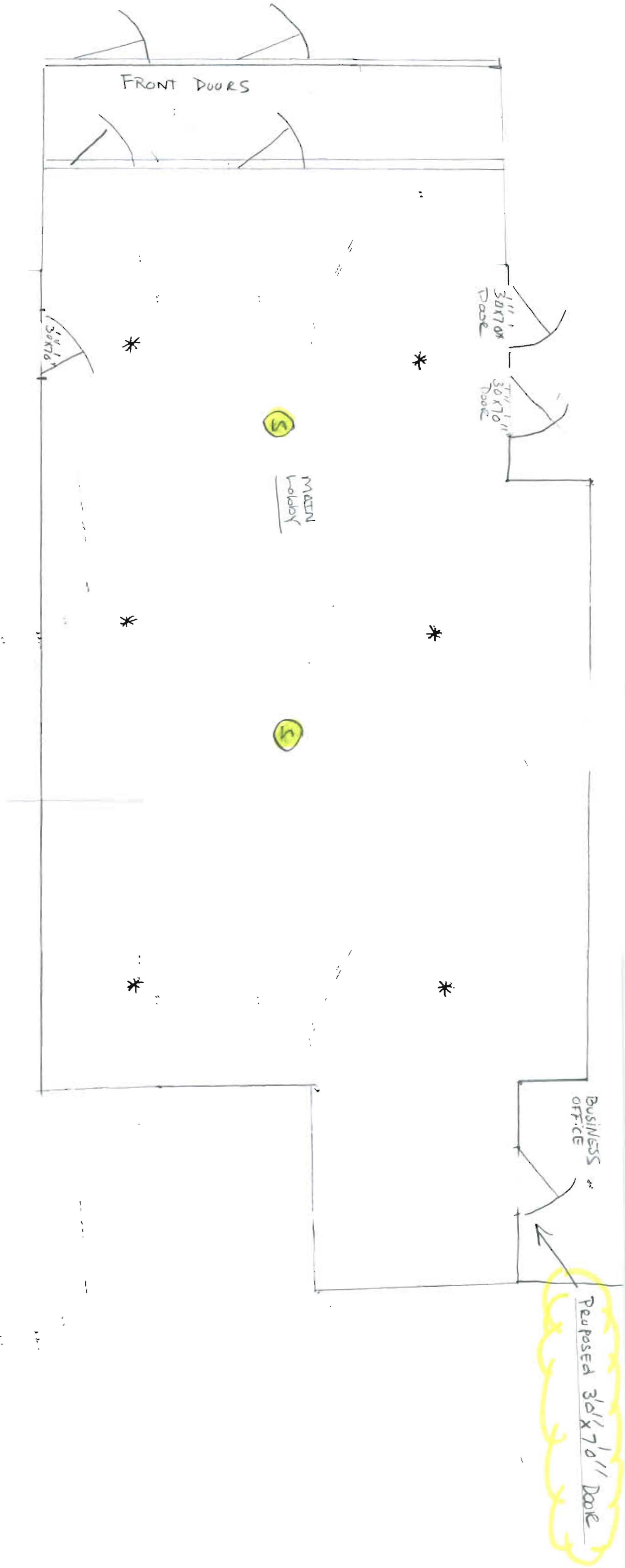


TYPICAL 5-PLY FIREGUARD PLUS



Glass Size: Max 1714 sq. in. Max 86-1/2" High
 Max Door Size: 4' 0" x 10' 0" Single 8' 0" x 9' 0" Pairs

1/4" = 1'
* = FIRE SUPPRESSION
S = SMOKE



SAINI JOSEPH MANNOR LOBBY