

24'-0"

19'-0"

5'-0"

6'-0"

4'-0"

7'-7"

10'-0"

8'-7"

38'-0"

14'-0"

6'-0"

4'-0"

W12x26 (24'-4" LG) STEEL BEAM ABOVE

W8x21 (14'-0" LG) STEEL BEAM ABOVE

GARAGE  
4" CONC. SLAB

2" HDL HDL w/ 1/2" PLT

HD.WD.

HD.WD.

3/8" TYPE X  
FIRE COVER  
CYP. BOARD  
ON WALL  
BETWEEN  
HOUSE &  
GARAGE

KITCHEN  
HD.WD.

LIVING  
13' x 25' CARPET

ENTRY  
HD.WD.

BALCONY

6'-9"

10'-6"

6'-9"

4'-0"

6'-0"

12" SIDE LITTER

9'-0"

6'-0"

4'-0"

24'-0"

14'-8"

9'-4"

14'-0"

38'-0"

62'-0"

62'-0"

38'-0"

24'-0"

19'-0"

14'-9"

4'-0"

7'-2"

2'-3"

11'-2"

9'-6"

9'-10"

11'-4"

5'-10"

D

D

D

D

C

BEDROOM #2  
14' x 13' CARPET

BATH  
TILE - 10'  
2'-9" x 6'-9"

WALK-IN CLOSET  
2' x 8'

11'-2"

9'-6"

3'-6"

3'-6"

20'-0"

5'-4"

2'-4"

3'-6"

17'-4"

26'-0"

5'-4"

2'-4"

3'-6"

6'-0"

20'-0"

STORAGE

2'-4"

2'-4"

3'-6"

9'-0"

6'-0"

2'-4"

2'-4"

3'-6"

9'-0"

6'-0"

2'-4"

2'-4"

3'-6"

9'-0"

6'-0"

2'-4"

2'-4"

3'-6"

9'-0"

6'-0"

2'-4"

2'-4"

3'-6"

9'-0"

6'-0"

2'-4"

2'-4"

3'-6"

9'-0"

6'-0"

4'-0"

6'-0"

9'-0"

9'-0"

4'-0"

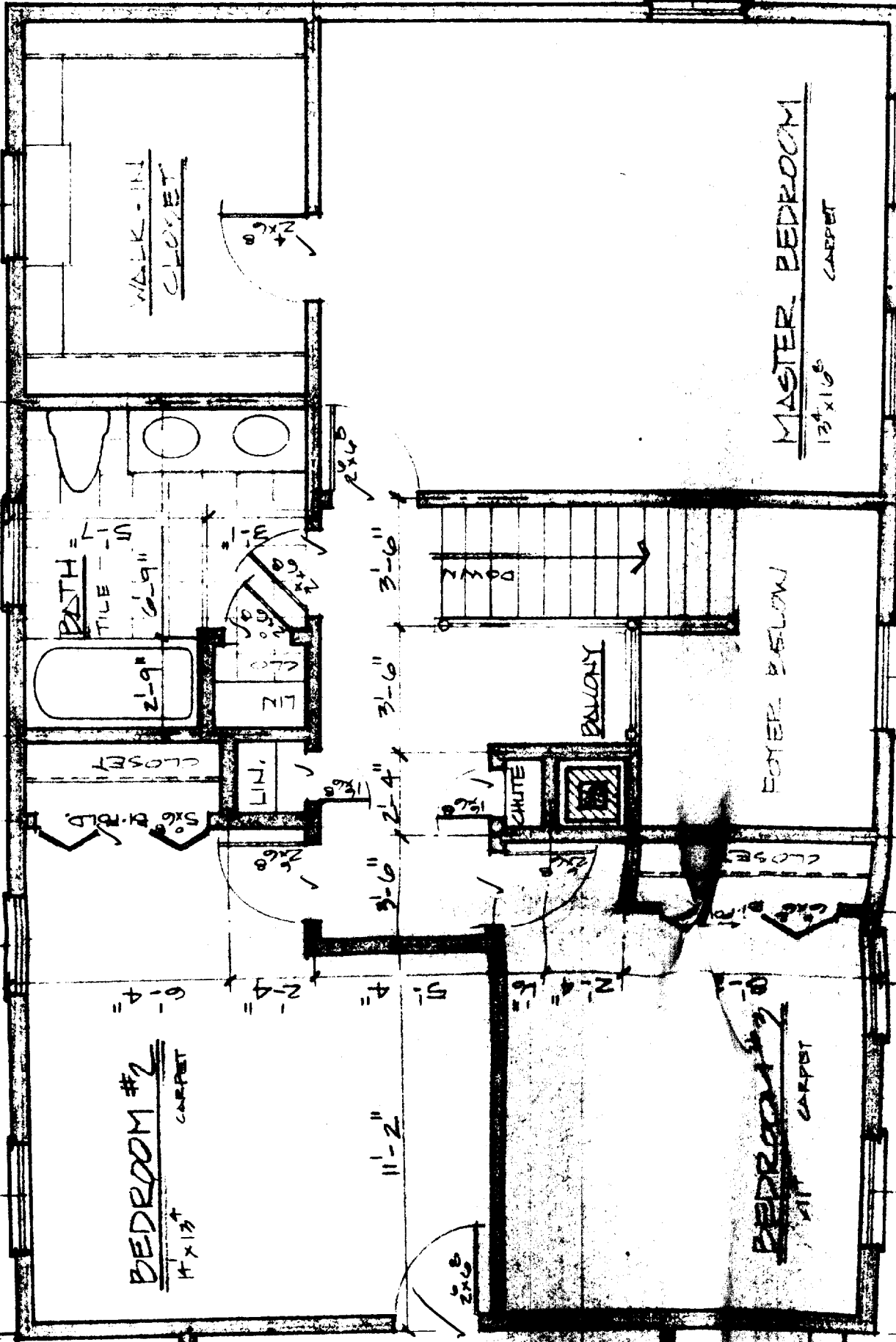
5'-0"

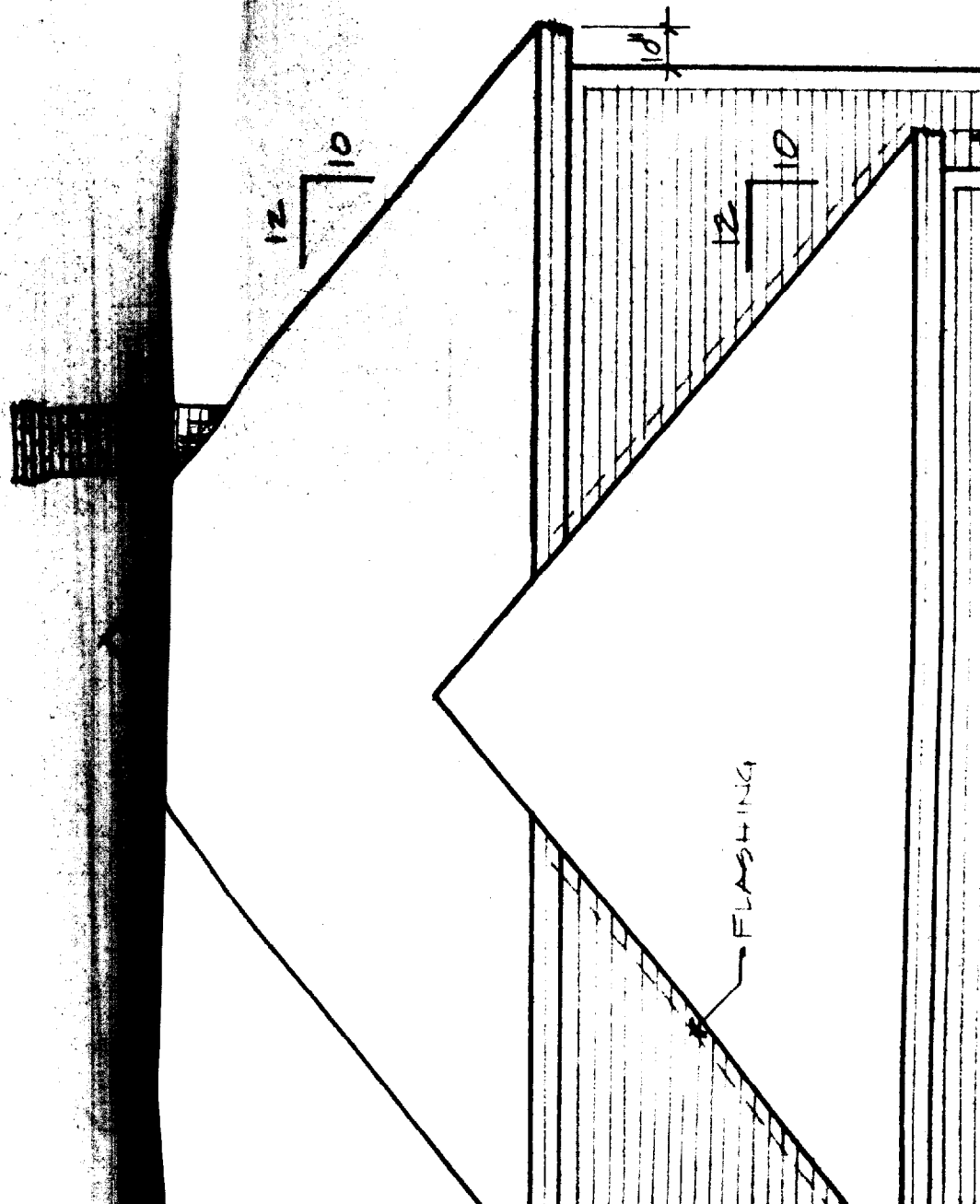
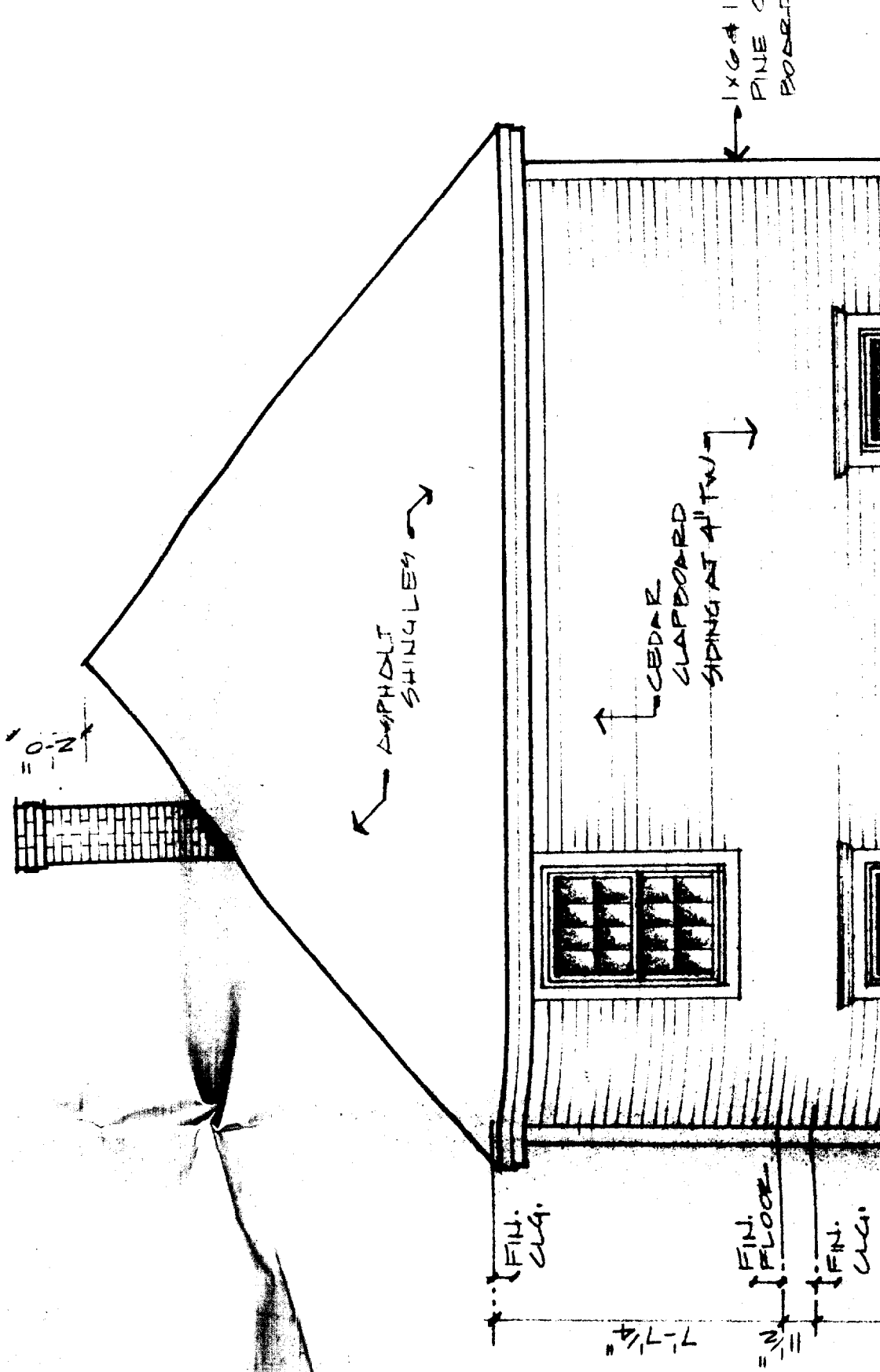
6'-0"

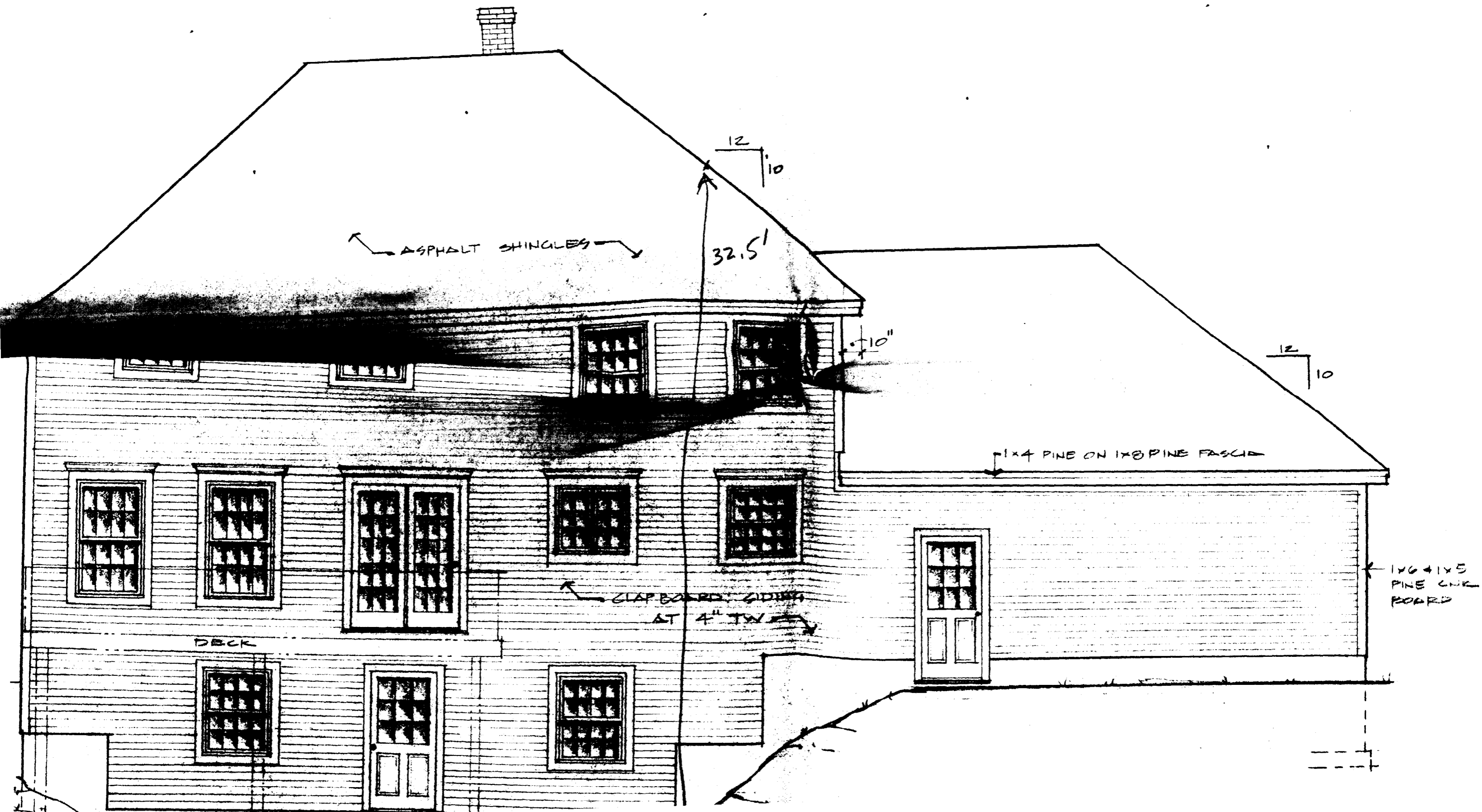
9'-0"

4'-0"

4'-0"







ASPHALT SHINGLES

12  
10  
32.5'

10"

12  
10

1x4 PINE ON 1x8 PINE FASCIA

CLAPBOARD SIDING  
AT 4" TYP

1x6 + 1x5  
PINE CTR  
BOARDS

DECK