

Graphex. The essential pool.

What happens when you combine sophisticated engineering, innovative design and a commitment to quality and satisfaction unparalleled in the swimming pool industry? The Graphex Pool System, truly a work of art.

Comprised of three separate systems – the wall panels and braces, the steps, and the liner – the Graphex Pool System delivers maximum strength and durability for years of maintenance-free enjoyment.

- The *Graphex Wall Panel and Braces* combine the strength of the materials we use with the strength offered by the overall design of the Graphex pool to create a pool that meets or exceeds National Spa & Pool Institute (NSPI), ICBO, City of Los Angeles, and BOCA codes.

- *Performance Steps*™ with the patented TFS system are designed as an integral component of the Graphex Pool System. Built to deliver absolute rock-solid performance, their style and beauty will add to any pool.

- The *Graphex Vinyl Liner* provides a soft, smooth surface – the healthiest pool surface in the industry – that's both beautiful and easy to maintain.

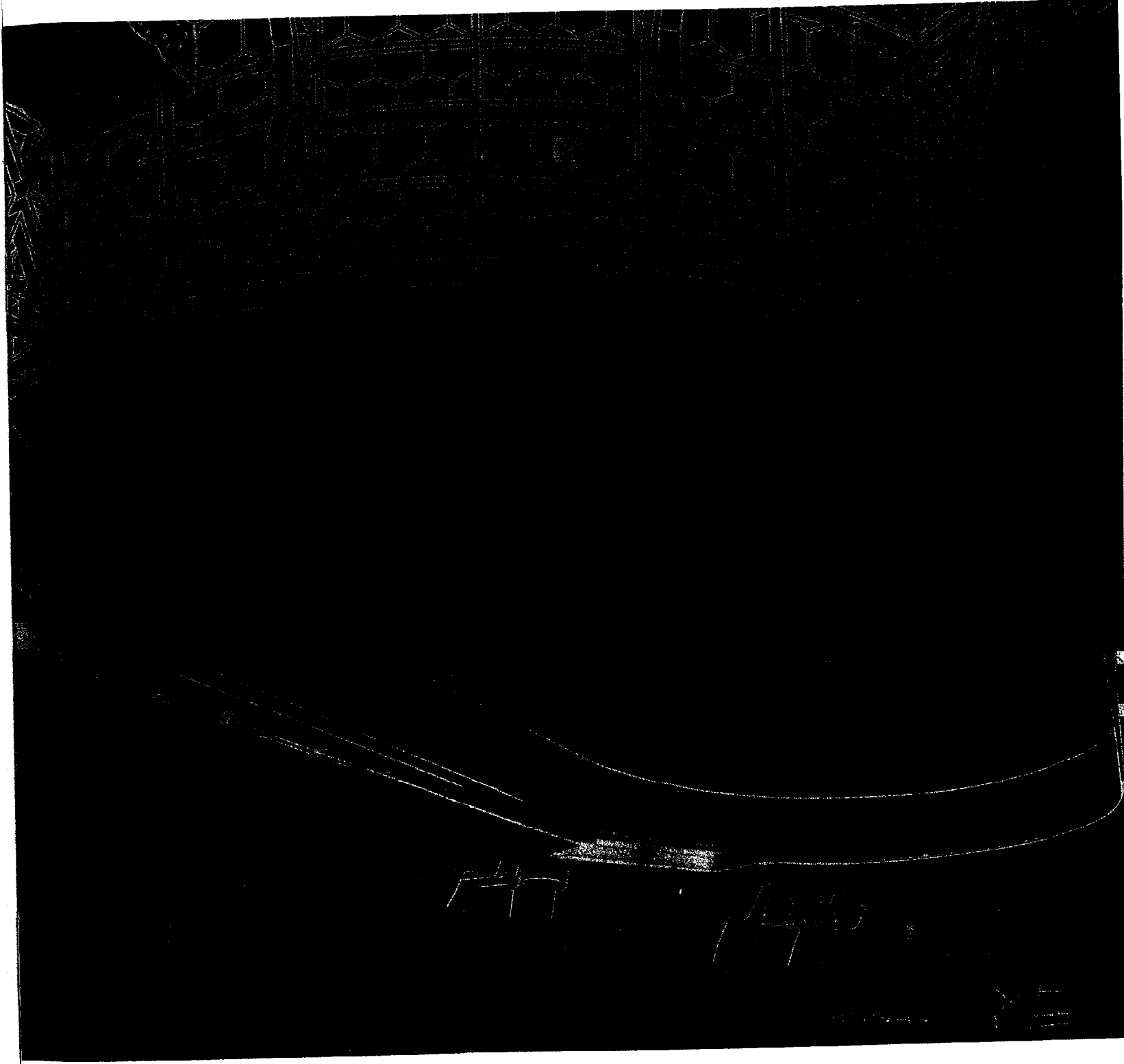
- The design flexibility afforded by the Graphex Pool System gives you the freedom to build the pool you've always dreamed of.

We've been designing and building pool systems for almost 40 years, and

everything we've learned about pool design and manufacture is built in to every Graphex Pool System. Graphex Pool Systems are manufactured in the United States and the United Kingdom, so it's easy to see why our network of exclusive Graphex dealers now extends worldwide.

The Graphex Pool System. The essence of strength and beauty.

Construction techniques depicted are suggested. Soil conditions, water tables and building codes may or may not allow variances.



A Step Ahead.

Performance Steps™ with the patented TES System.

Sculpted to combine strength and beauty.

The unique integral design of the Performance TES System offers the strongest, most advanced step design available in the pool industry. The TES System eliminates the use of traditional piping support, relying instead on the high-impact strength of engineered thermoplastic.

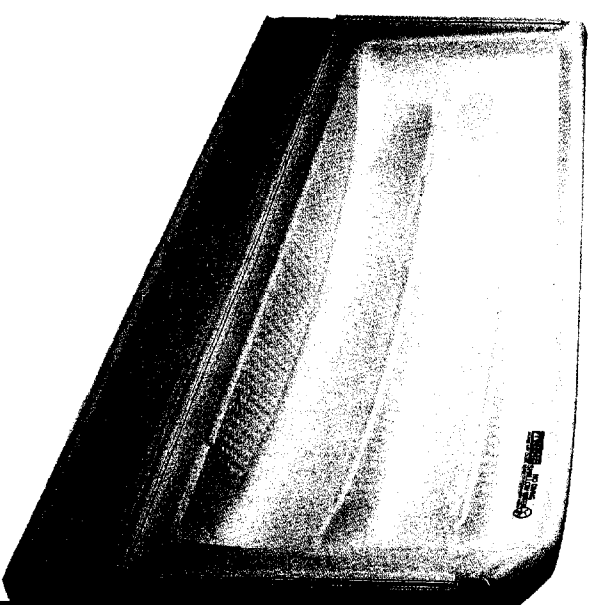
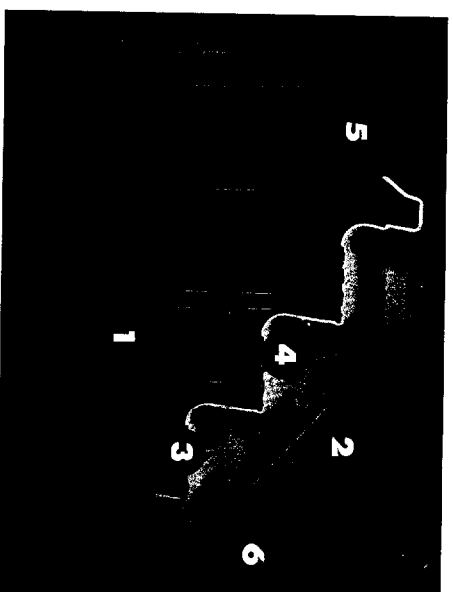
Unlike acrylic/fiberglass or vinyl covered metal units,

Performance Steps are molded from a solid sheet of coextruded Luran® S with an ABS substrate from BASF resulting in a strong, one-piece design, that will never delaminate, splinter, corrode or puncture.

The additional strength and flexibility of weatherable polymers enable Performance Steps to withstand the stress of frost and backfill saturation far better than other materials. And when you consider the economics of how easy it is to install our patented TES System, you'll see why Performance Steps are steps ahead.

TES—Totally Encapsulated Support.

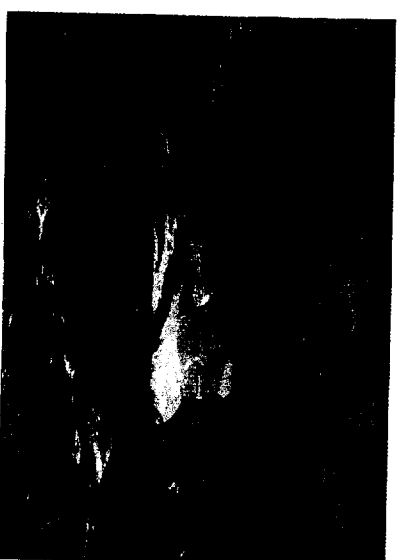
1. Solid bracing grid system of engineered thermoplastic material provides maximum strength and durability.
2. One-piece molded design will not delaminate, splinter, corrode or puncture.
3. Interlocking grid system supports the entire tread surface and prevents material fatigue due to constant loading and unloading.
4. Raised, non-slip tread pattern.
5. Modular bracing allows for optional deck support.
6. Molded-in dead-end block for watertight, screw encapsulation.



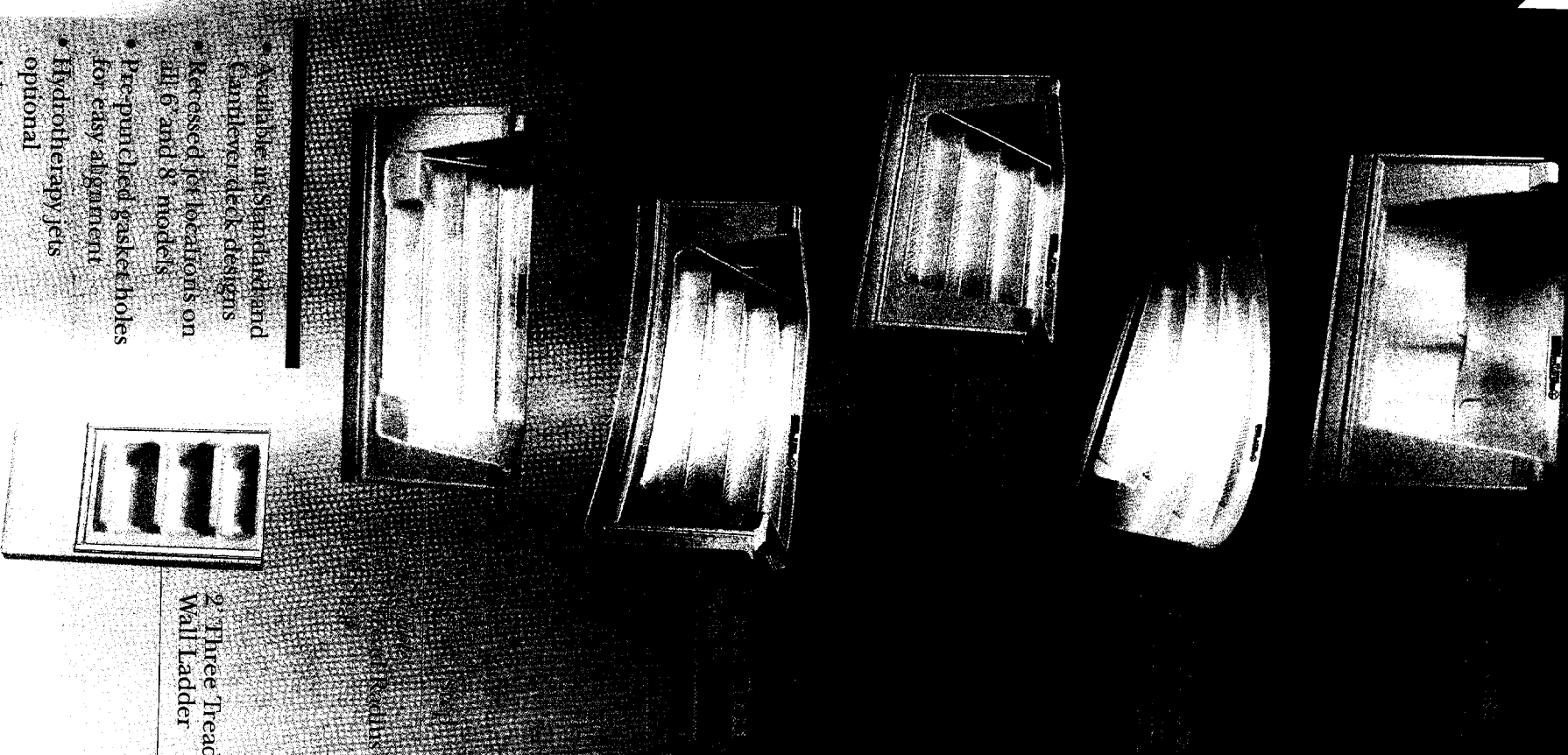
THE PERFORMANCE CORNER STEP.

We've cornered the market.

The new Performance Corner Step offers beauty and style while providing an ideal alternative for yards where space is a concern. Our Corner Step maintains the inside lines of your pool and is the perfect choice for pools with automatic covers.



PERFORMANCE STEPS



2 Three Tread Wall Ladder

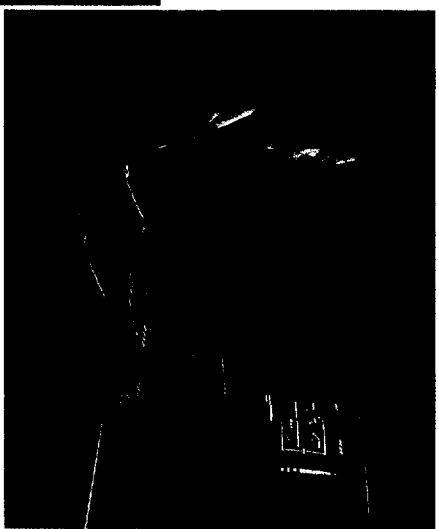
- Available in Standard and Camlever deck designs
- Recessed for locations on all 6 and 8 models
- Pre-punched gasket holes for easy alignment
- Hydrotherapy jets optional
- Ask your dealer for details on all Performance Steps

Performance Steps™ is a trademark of Pacific Industries Inc. Luran® S is a registered trademark of BASF.

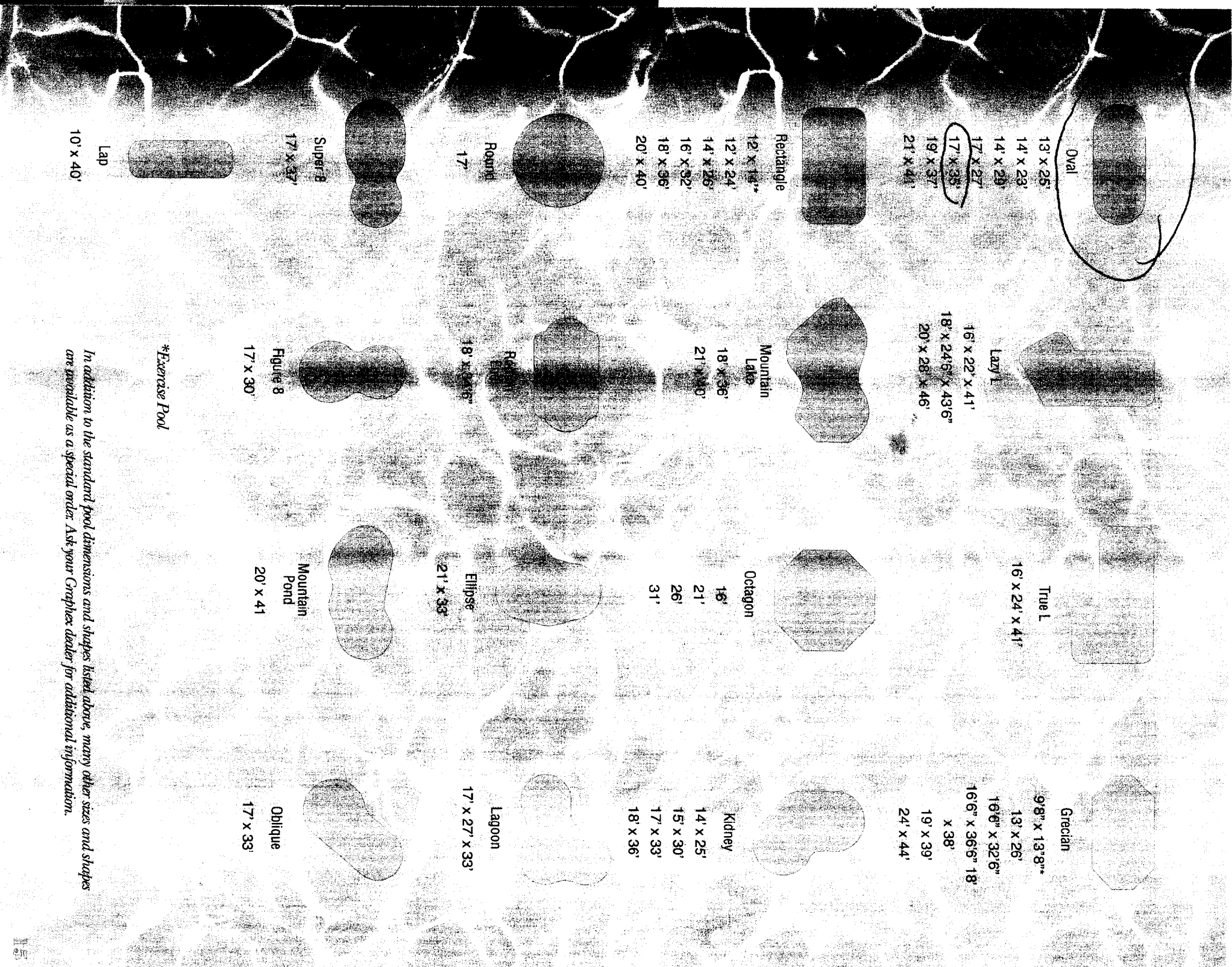
Strokes of Genius.

The Drama of Design.

Your home. It's a unique reflection of your taste and your lifestyle. Shouldn't the shape and size of your swimming pool be the same? It will be when you select the strength and beauty of a Graphex Pool System.



Our talented and highly skilled designers, using the most sophisticated computer-aided design and engineering tools, offer you the most comprehensive selection of pool designs in the world. Pools that are not only beautiful and unique, but thoughtfully planned works of art. And you have the confidence of knowing your Graphex Pool dealer is committed to your complete satisfaction every step of the way.



**Exercise Pool*

In addition to the standard pool dimensions and shapes listed above, many other sizes and shapes are available as a special order. Ask your Graphex dealer for additional information.

Every Masterpiece Starts With Design.

The Graphex Wall Panel.

The Graphex Pool wall panels are molded from a high strength resin, similar to the materials used to increase strength, resilience and durability in sports equipment, automobiles and aircraft. The Graphex Pool wall panels combine this advanced materials technology with innovative design to provide superior structural integrity. Here's how:

High-tech resins
are the material
of choice for many
high-performance
applications.

1. Wall panels and braces are made of an all-resin structural polymer that will never rust, oxidize or degrade.

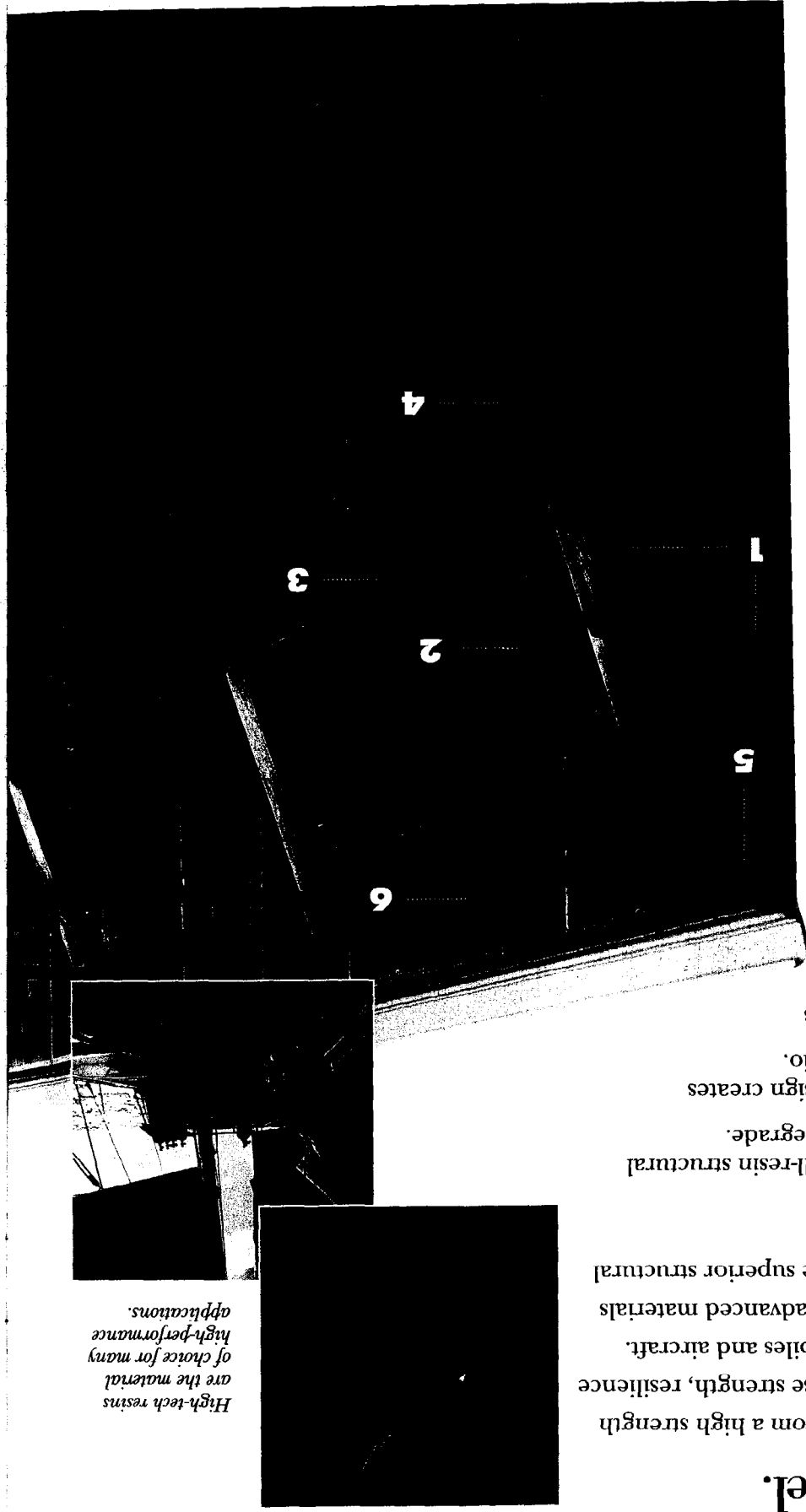
2. Our unique "honeycomb" wall panel design creates an extremely high strength-to-weight ratio.

3. The wall panels design also incorporates five horizontal ribs that surround the pool to provide strength and integrity.

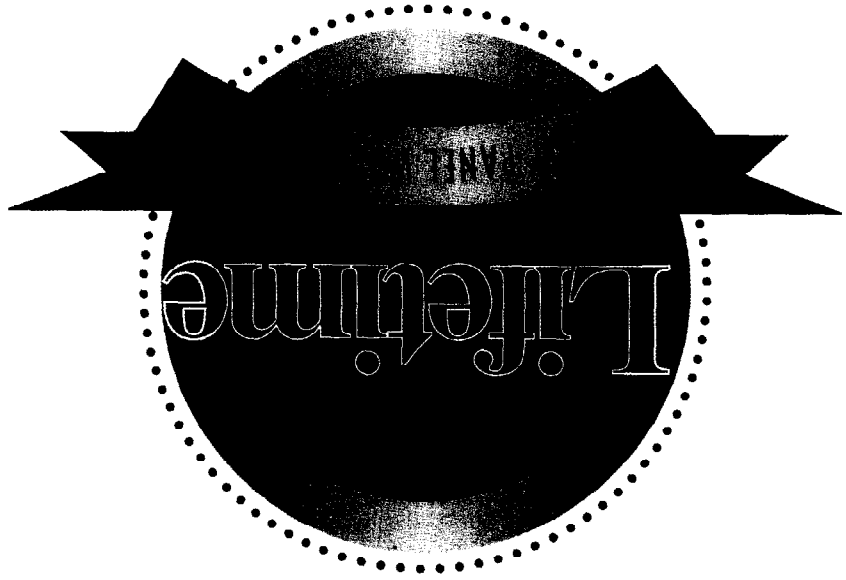
4. Our patented K-Brace – located every three to four feet around the entire pool – is integrated right into the decking and concrete bond beam. This incorporates the wall panels into a rigid monolithic structure, maximizing pool strength.

5. The exclusive Mate-Lock system assures positive alignment of the wall panels, adds strength at all panel joints and facilitates installation.

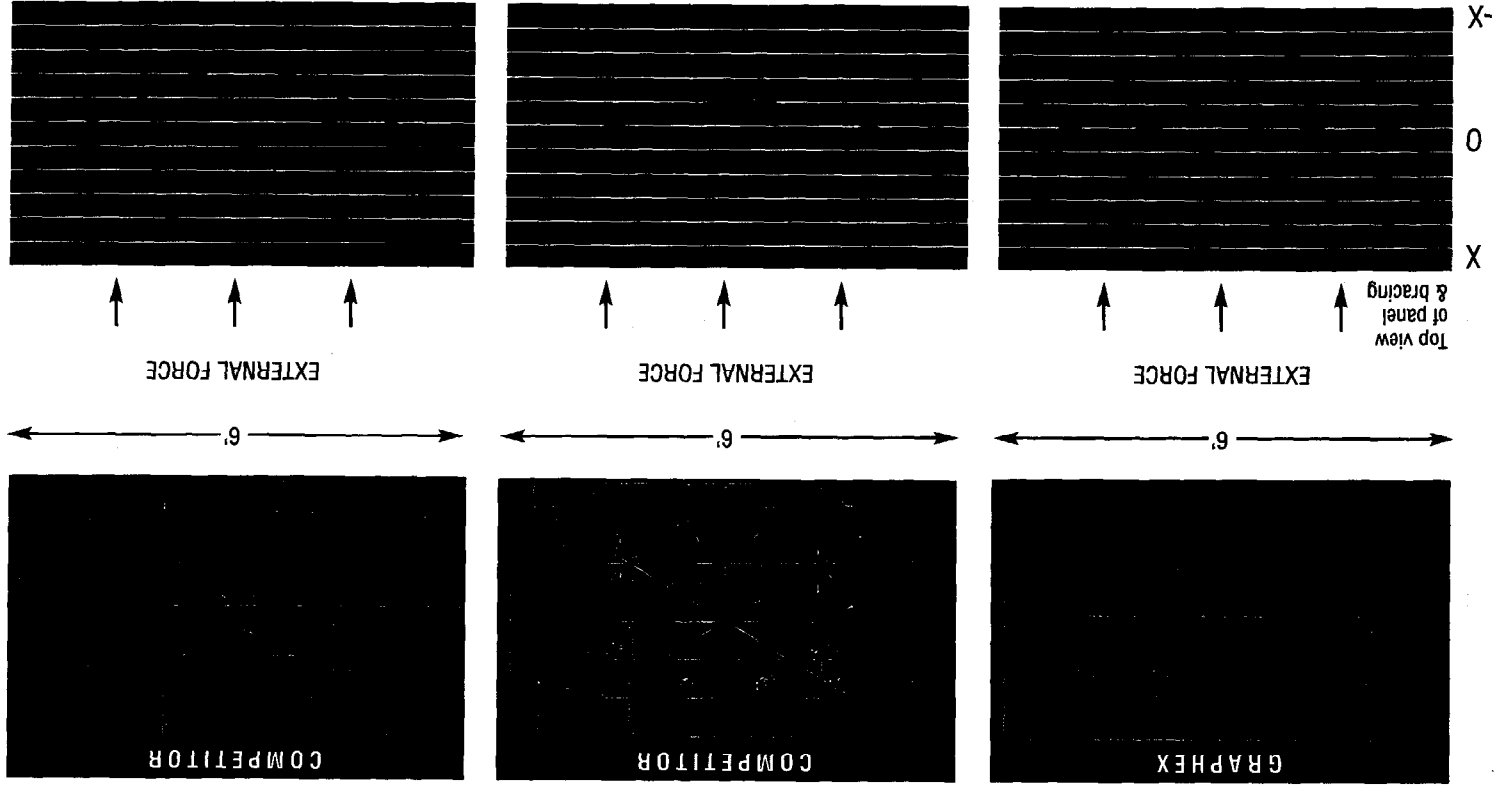
6. All Graphex Pool kits include skimmer wall panels with factory-molded wide-mouth design; even the holes for the mounting screws are factory-set.



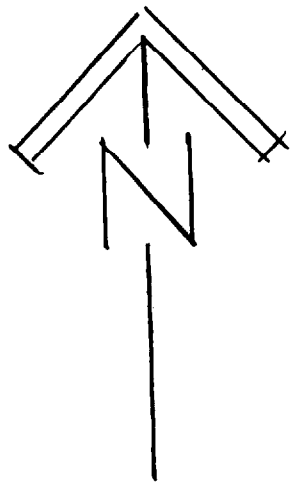
Built to last. Guaranteed.



With a Graphex Pool System, you'll have the ultimate in peace-of-mind: that's why it comes with a lifetime transferable warranty on all wall panel components.



The Graphex wall panel, with its integral honeycomb design and bracing, provides exceptional strength and resistance to deformation.



14

BENCH M
SMH R
EL = 102

CON
OP.

FIN. FL. = 101.0

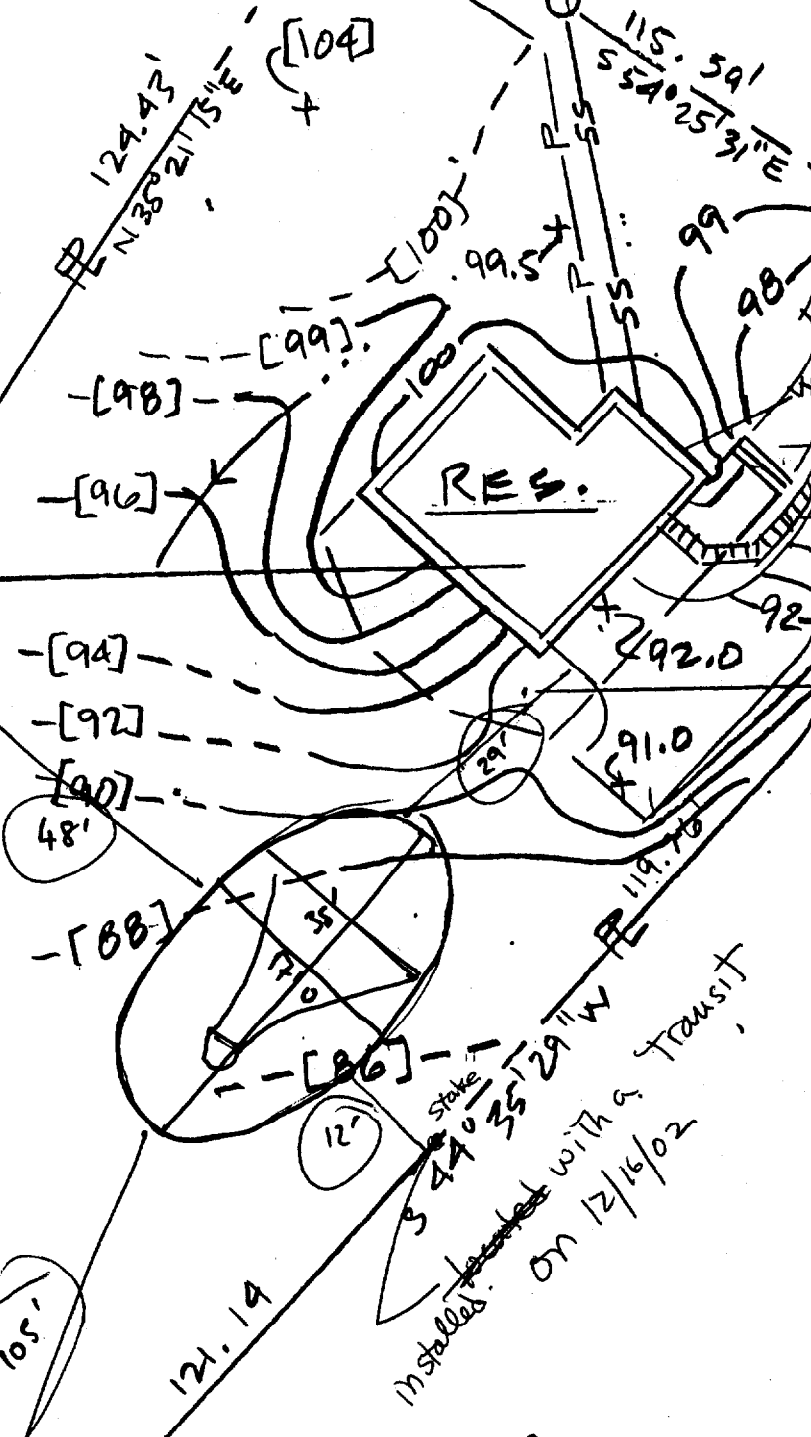
LOT # 13

180.52'
500°75'47"W

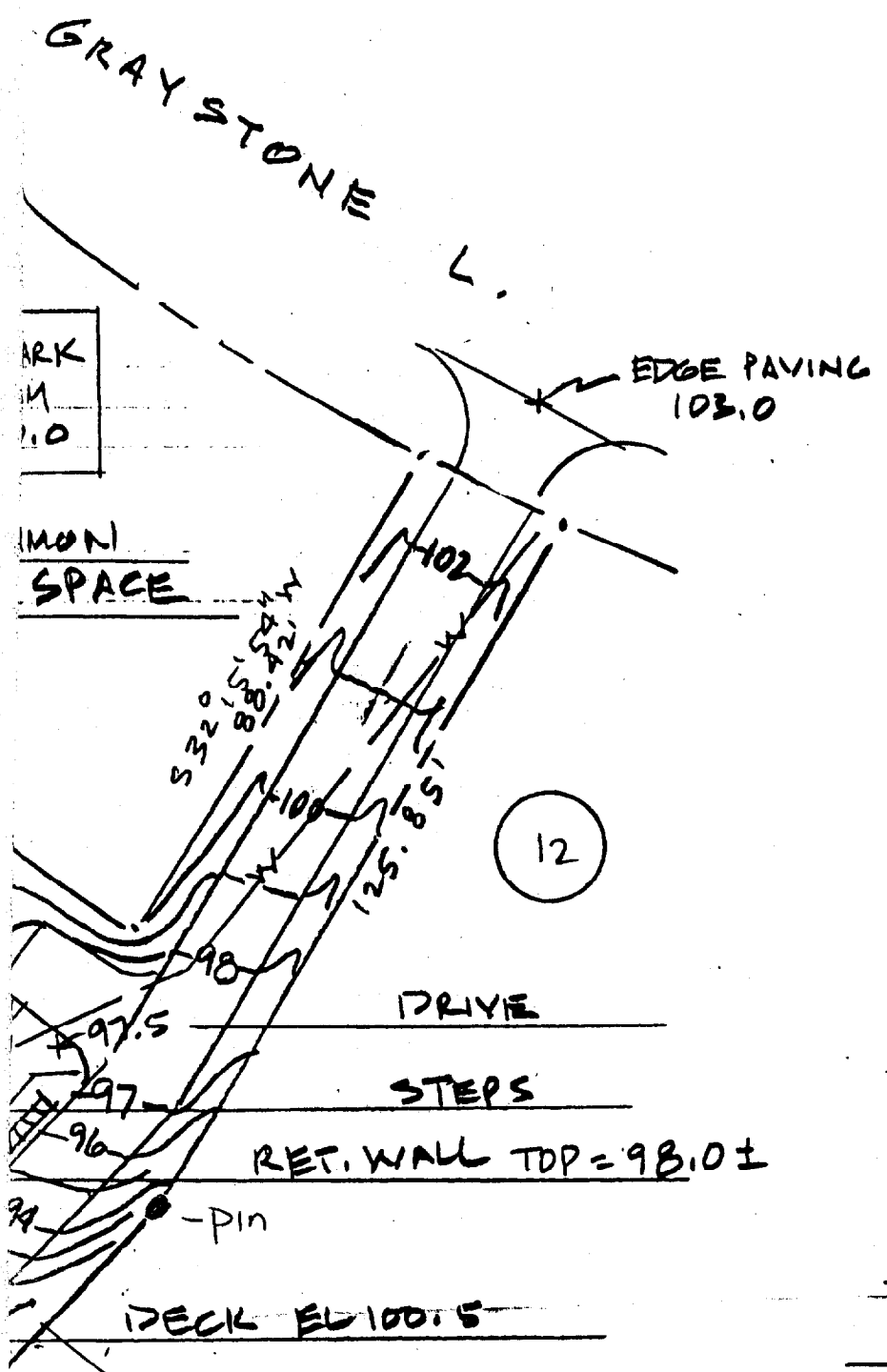
15

R-5 Zone
Pool must meet
minimum 10' setback
to ALL property lines
and dwelling

PIN



SITE # 1
SCALE: 1"



LEGEND

--- P ---	PROP. LINE
--- [100] ---	EXIST. CONTOUR
--- 100 ---	NEW CONTOUR
+ 92.0	SPOT ELEVATION
--- →	DRAINAGE SWALE
--- W ---	WATER LINE
--- SS ---	SAN. SEWER
--- P ---	POWER/TEL/CABLE
○	SAN. MANHOLE

PLAN
= 30'

APR 14 1997

THE NEALE RESIDENCE
SITE GRADING & UTILITIES
AUDEN'S WALK - PORTLAND, ME.

THE THAXTER CO.
PORTLAND, MAINE