

L-127

L-46.39'

TRANSFORMER PAD

SCALE 1/16" = 1'-0"

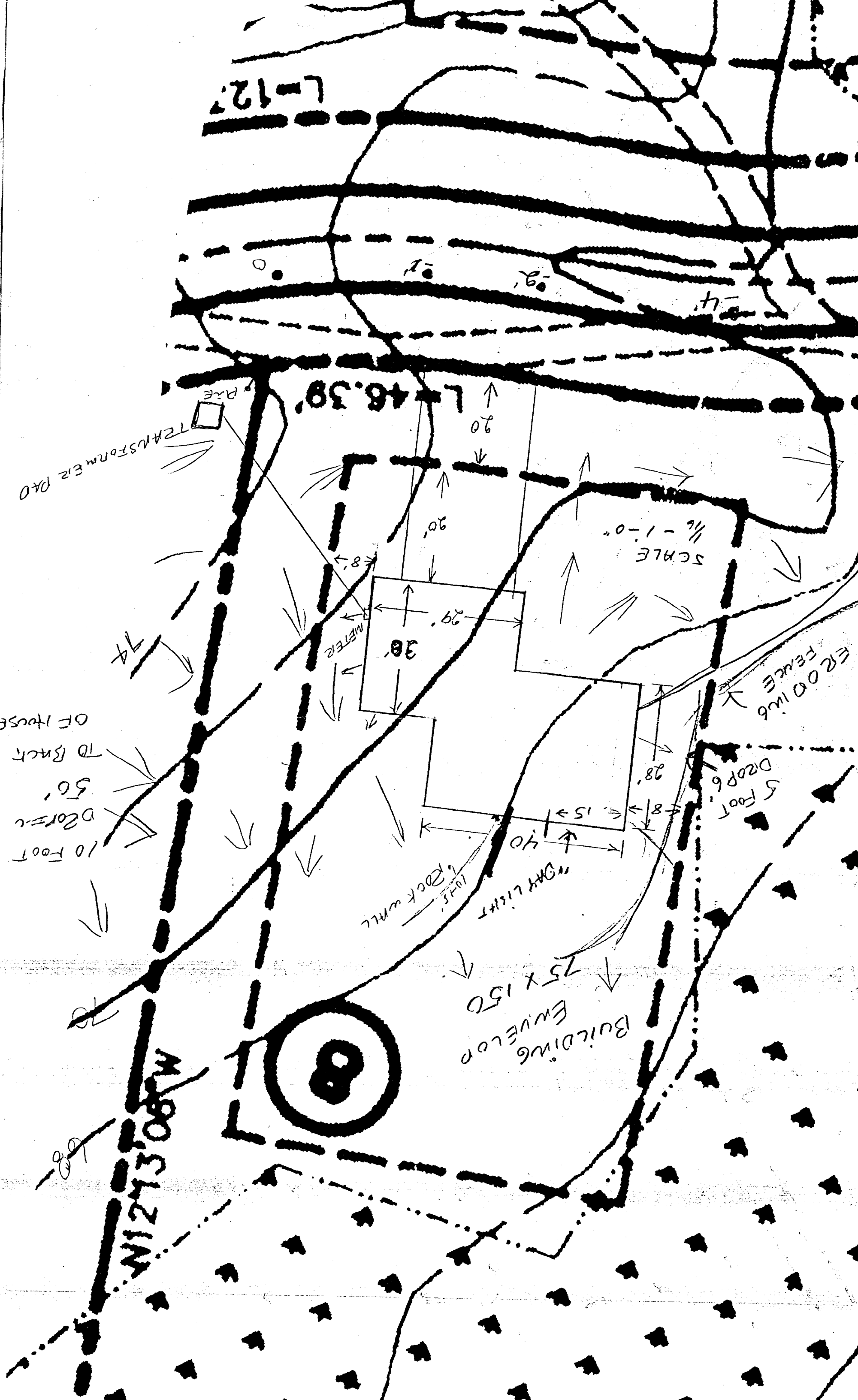
10 FOOT
DRAIN
50'
TO BACK
OF HOUSE

5 FOOT
DRAIN
FENCE

10 FT
ROCK WALL

BUILDING
ENVELOP
75 x 150

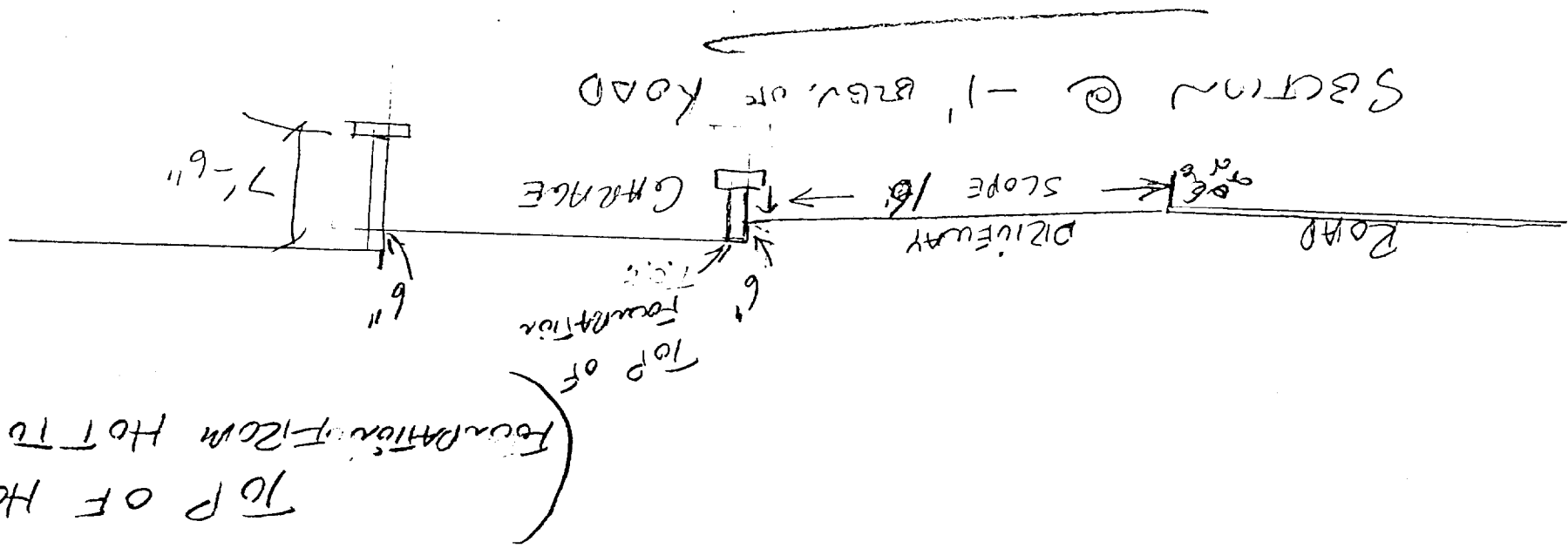
W1273087W

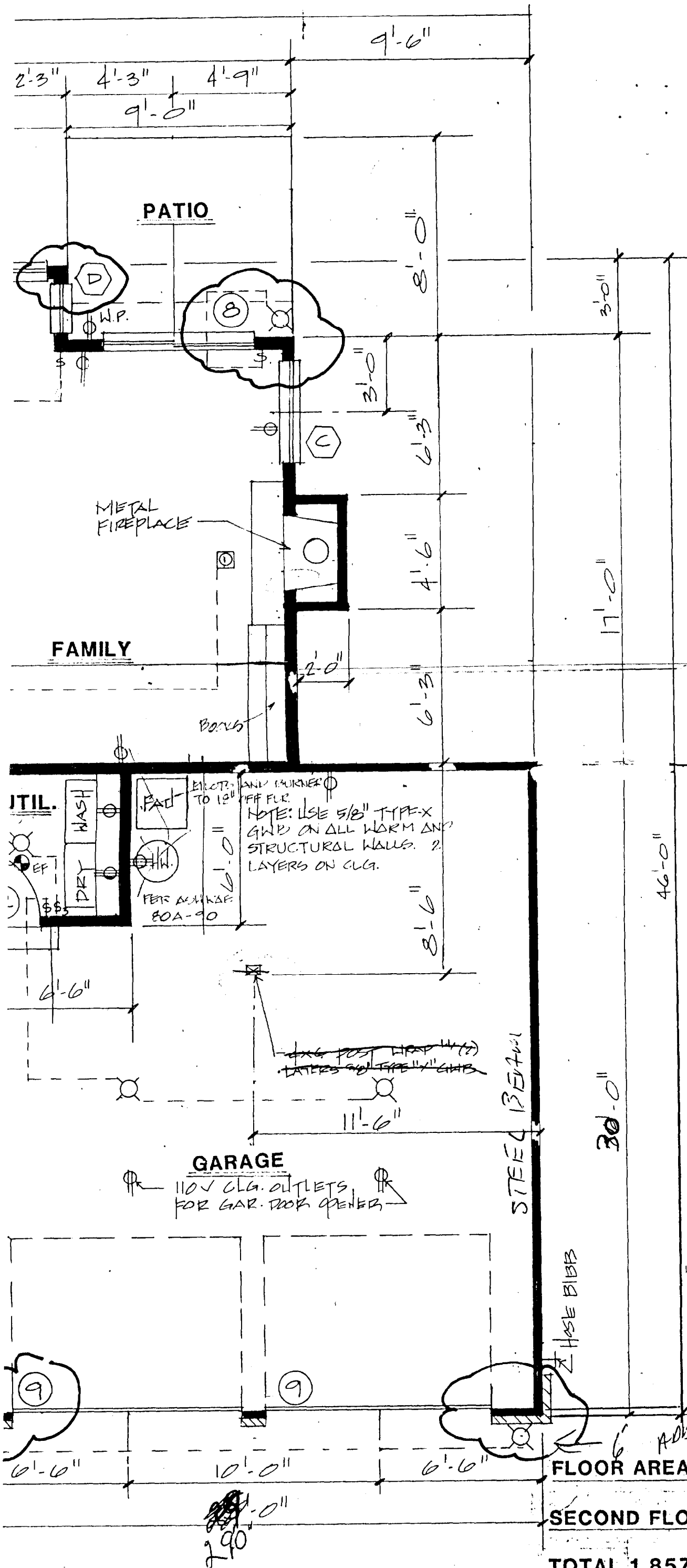




024.41'

TOP OF LAWN AT HOUSE
IS 20'-18" FROM HOT TOP





NOTE:
 VENT ALL EXHAUST FANS,
 PRYER & RANGE TO OUTSIDE.
 VENT W.H. PRESSURE RELIEF
 VALVE OUTSIDE.

Every effort has been taken to assure the
 accuracy of these drawings. Furthermore, the
 general contractor must check and verify all
 dimensions.

FLOOR AREA FIRST FLOOR 1,034 SQ. FT.
SECOND FLOOR 823 SQ. FT.
TOTAL 1,857 SQ. FT.
GLASS AREA 307 SQ. FT. 16%

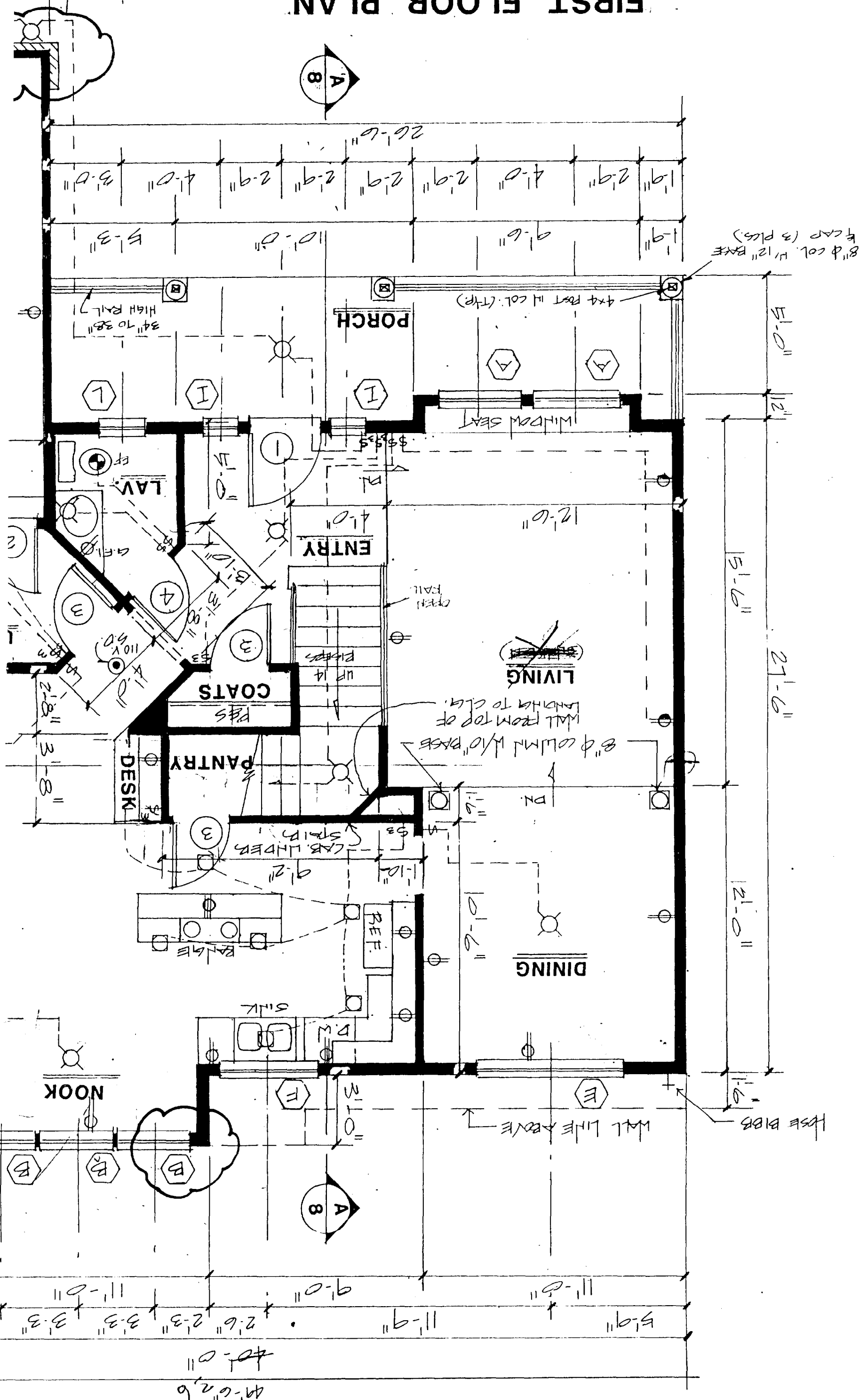
CHECK
DRAWN R.K
DESIGN 201
SHEET N 2
2 OF



FIRST FLOOR PLAN

SCALE 1/4"=1'-0"

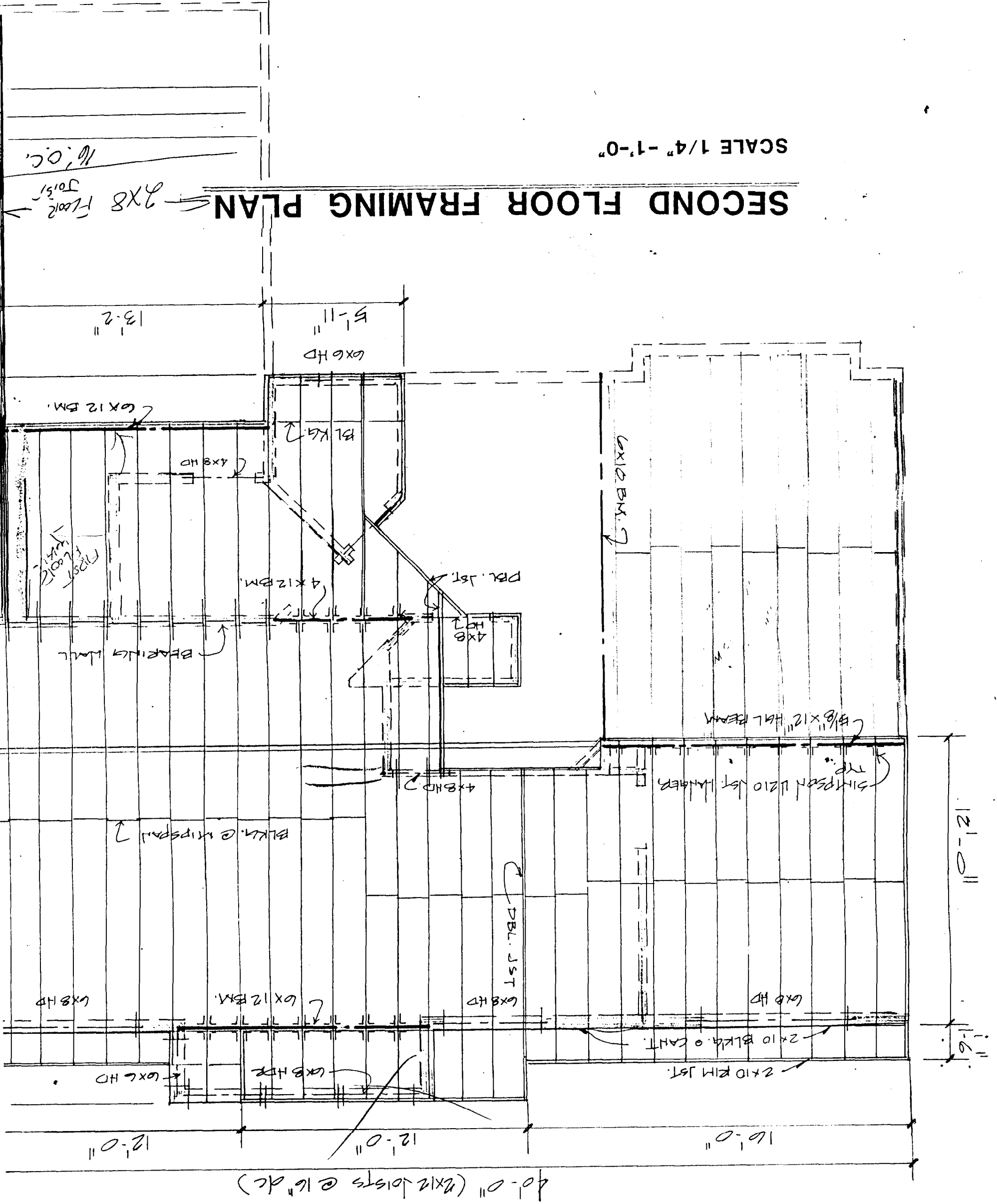
SEE TYPICAL LAT.
FRAM RESTRAINT
PANEL AT GENERAL
NOTES



SCALE 1/4" = 1'-0"

SECOND FLOOR FRAMING PLAN

2x8 Joist
16' o.c.



40'-0" (2x12 Joists @ 16" oc)

6x8 HD

6x12 BM

6x8 HD

6x8 HD

6x6 HD

6x8 HD

2x10 RIM JST

2x10 BLK. o. CANT.

BLK. o. WIPSPALL

DBL. JST

SIMPSON 1/2x10 JST LAGERS

1/2x8x12 HAL BEAM

4x12 BM

4x8 HD

4x8 HD

BLK. o.

6x6 HD

6x12 BM

13'-2"

5'-11"

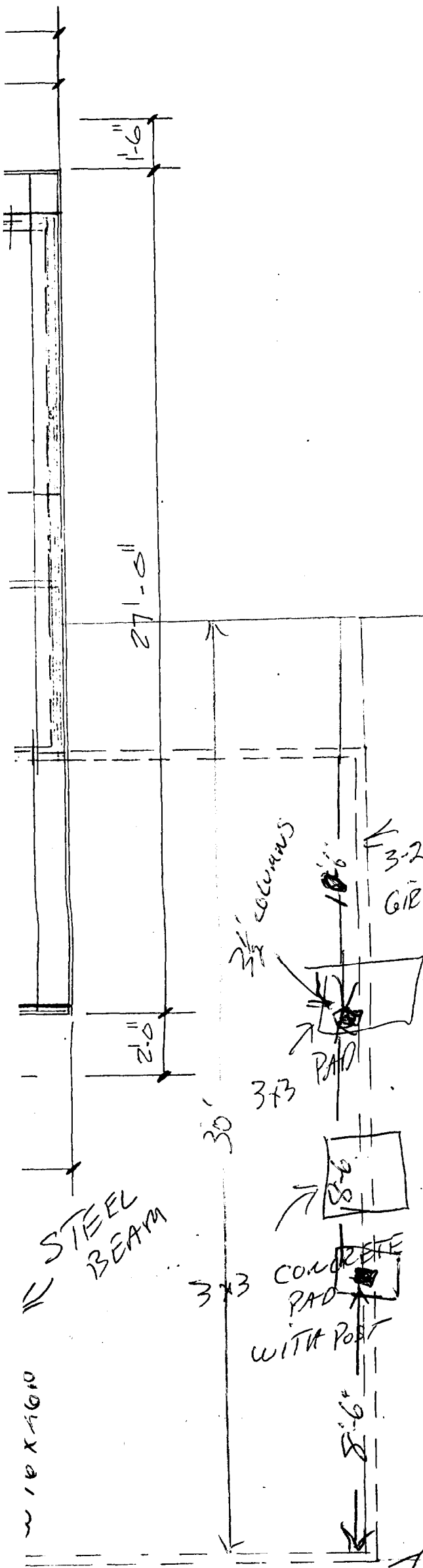
11'-0"-1/2"

9'-1 1/2"

16'-0"

12'-0"

12'-0"



WINDOW SCHEDULE

NOTE: All bedroom windows to have clear opening of 5.7 S.F. & min. clear width of 20", height of 24",
Verify with window mfg. when ordering windows

#	SIZE	FRAME	DESCRIPTION	QTY.	NOTES
A	3/6 x 6/0	VINYL	SINGLE HUNG	2	
B	3/0 x 5/0	"	" "	3	
C	4/0 x 5/0	"	" "	1	
D	2/0 x 5/0	"	PICTURE	1	
E	6/0 x 5/0	"	SLIDERS	1	
F	4/0 x 3/11	"	"	1	
G	5/0 x 4/0	"	"	2	
H	6/0 x 4/0	"	"	1	
I	1/0 x 6/0	"	PICTURE TEMPERED	2	
J	1/0 x 3/0	"	PICTURE	2	
K	3/0 x 4/0	"	ROUND TOP	1	
L	2/0	"	2'-0" DIA. ROUND	2	
M					
N					
O					
P					

DOOR SCHEDULE

#	SIZE	FRAME	DESCRIPTION	QTY.	NOTE
1	1 3/4 x 3 1/2 x 6 1/2	WOOD	SOLID CORE EXTERIOR	1	
2	1 3/8 x 2 1/2 x 6 1/2	"	SOLID CORE INTERIOR W/ SELF CLOSER	1	
3	1 3/8 x 2 1/2 x 6 1/2	"	HOLLOW CORE INTERIOR	7	
4	1 3/8 x 2 1/4 x 6 1/2	"	" " "	2	
5	5/0 x 6/8	"	DBL 2/0 HOLLOW CORE W/ PASSAGE LOCKSET	1	
6	4/0 x 6/8	"	BI-FOLD	2	
7	1 3/8 x 1/0 x 6 1/2	"	HOLLOW CORE INTERIOR ^{COLBERT'S}	1	
8	6/0 x 6/10	VINYL	SL. GL. DOOR	1	
9	9/0 x 7/0	WOOD	16 PANEL GAR. DOOR	2	
10					
11					
12					
13					
14					
15					
16					
17					

NORTHWEST HOME DESIGNING INC.

TACOMA WA 98499 (206) 584-6309 FAX: (206) 588-0607

CHECKED

DRAWN
R. K.

DESIGN
201

SHEET NO

3

3 OF

