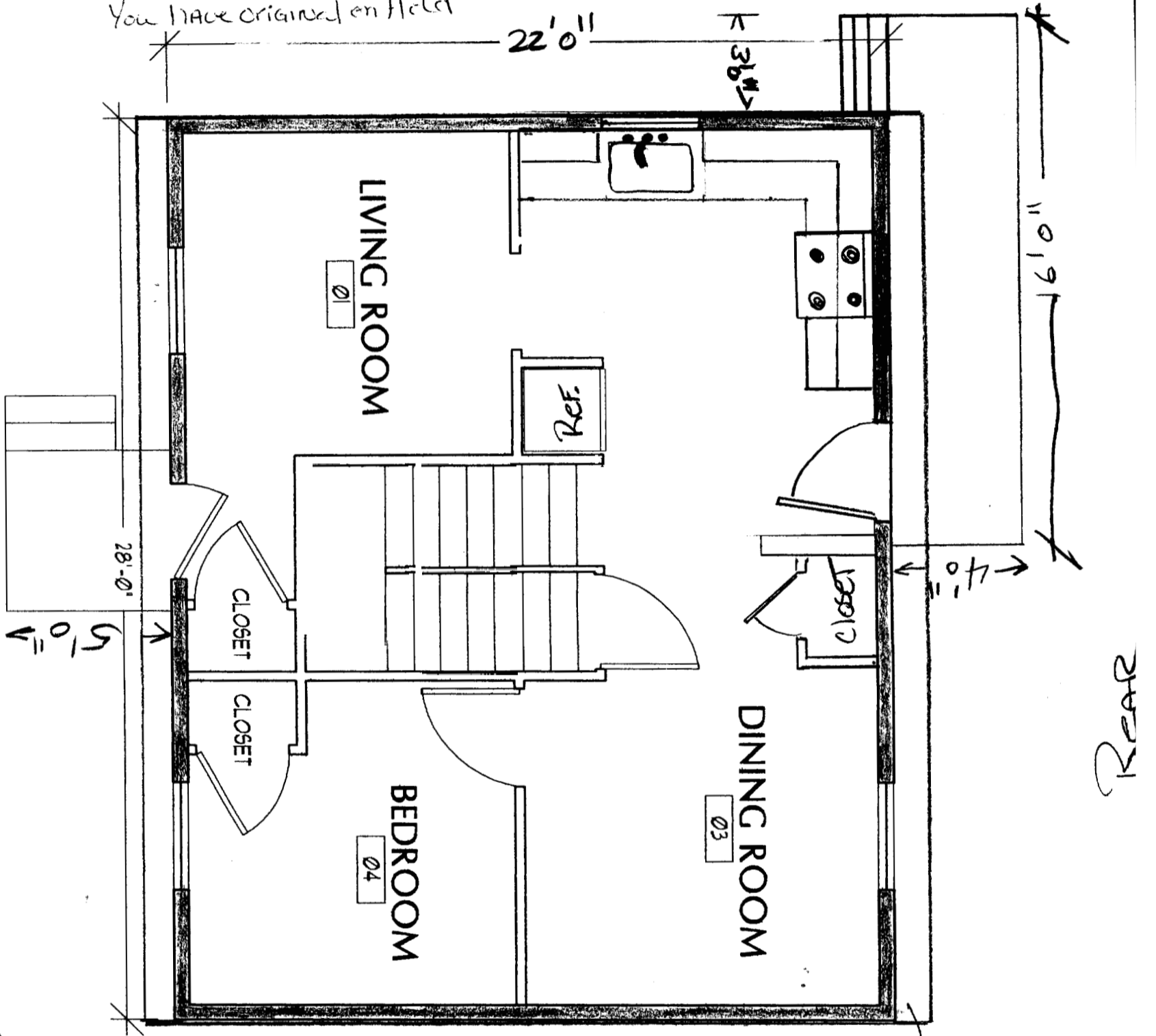


55 Malilly

Steve Bolten  
772-2151

City = Brad Rowland  
is providing plot plan  
You have originated on field



FRONT

REAR

12" overhang  
FRONT +  
REAR.

All notes in  
blue Bolten  
Steve Bolten  
11/30/04

**NEW**

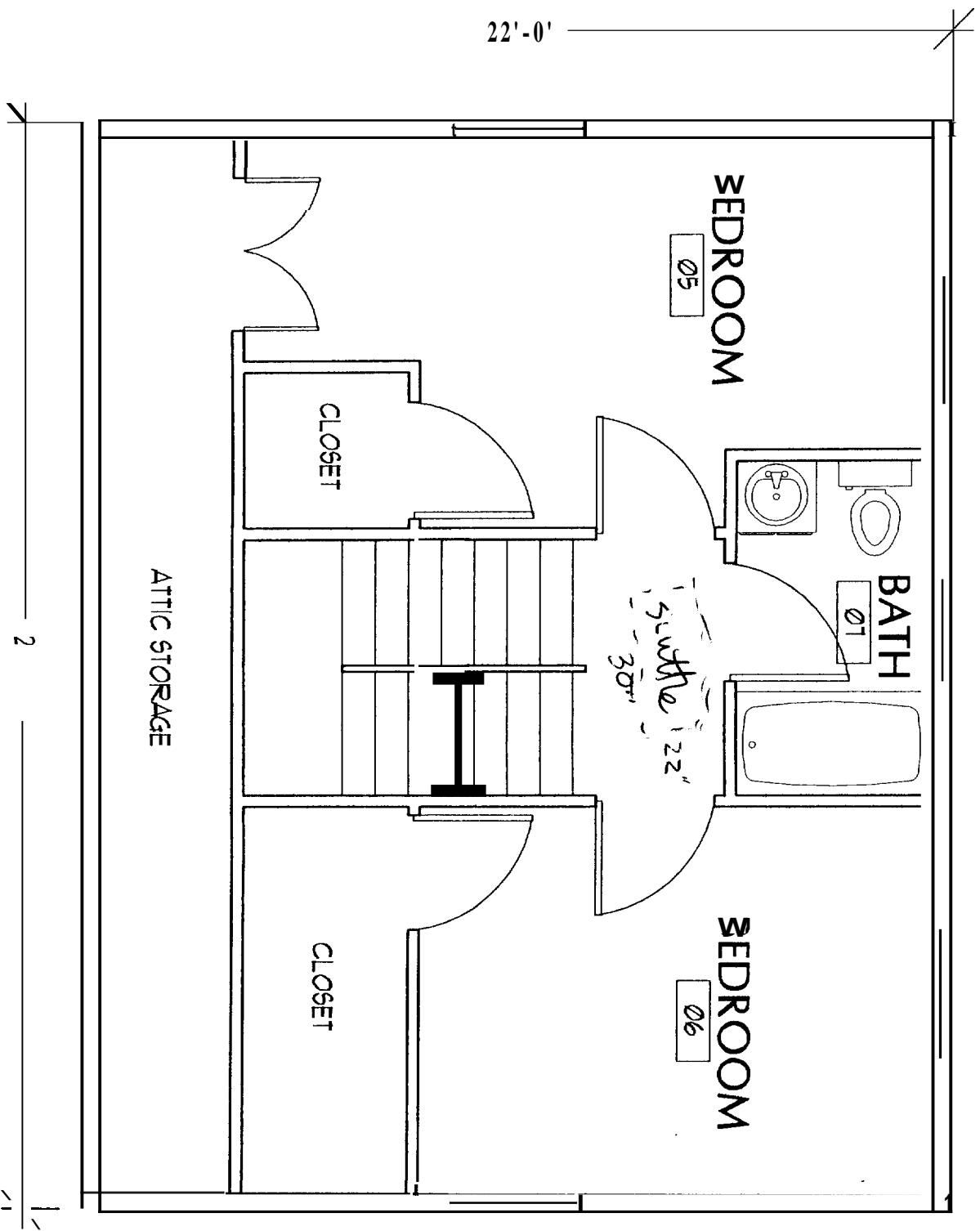
SEP 29 2004

# HABITAT FOR HUMANITY

DRAWN BY:

ISSUE DATE

A-1

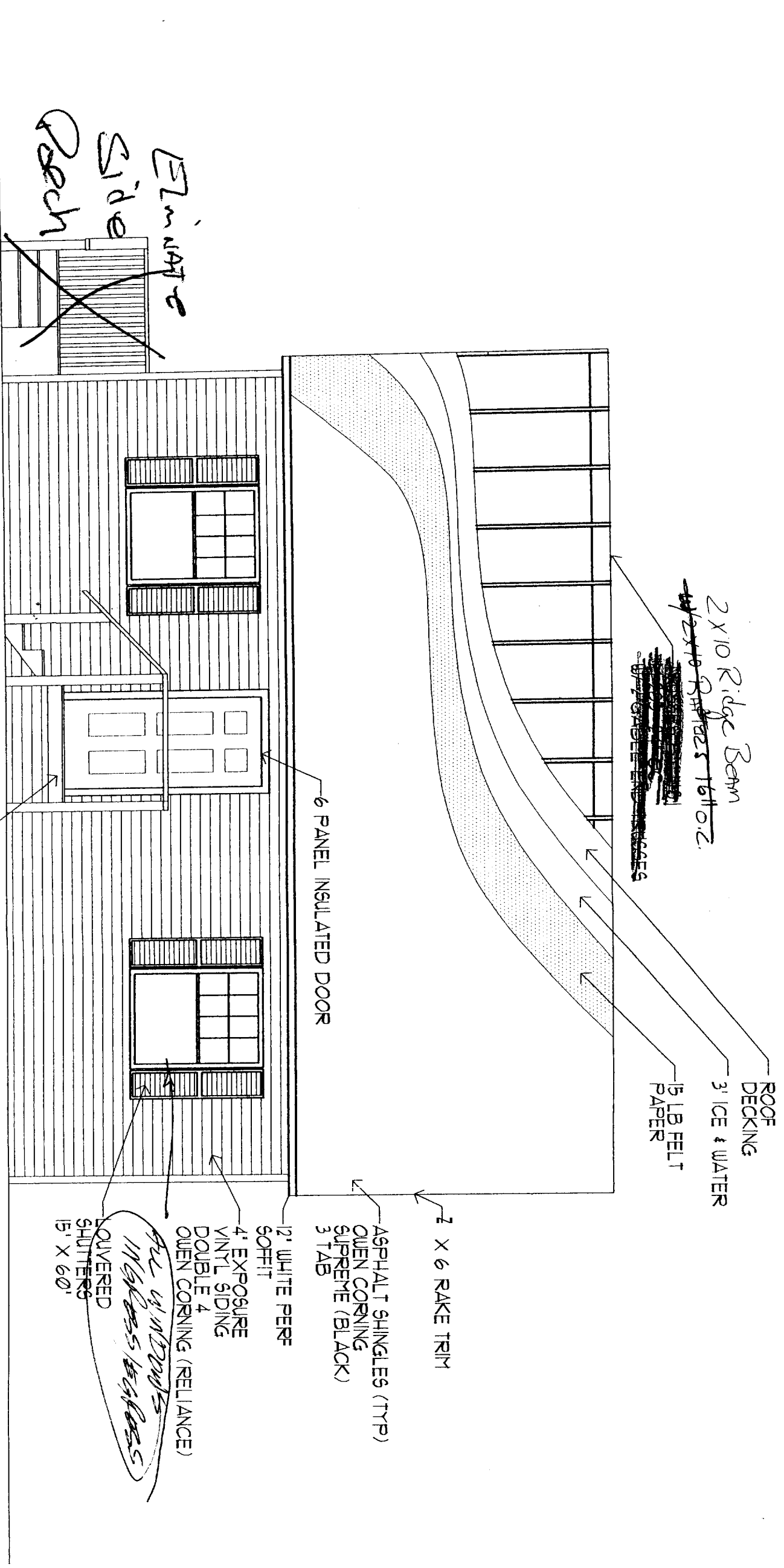


# HABITAT FOR HUMANITY

DRAWN BY:

ISSUE DATE

A-2

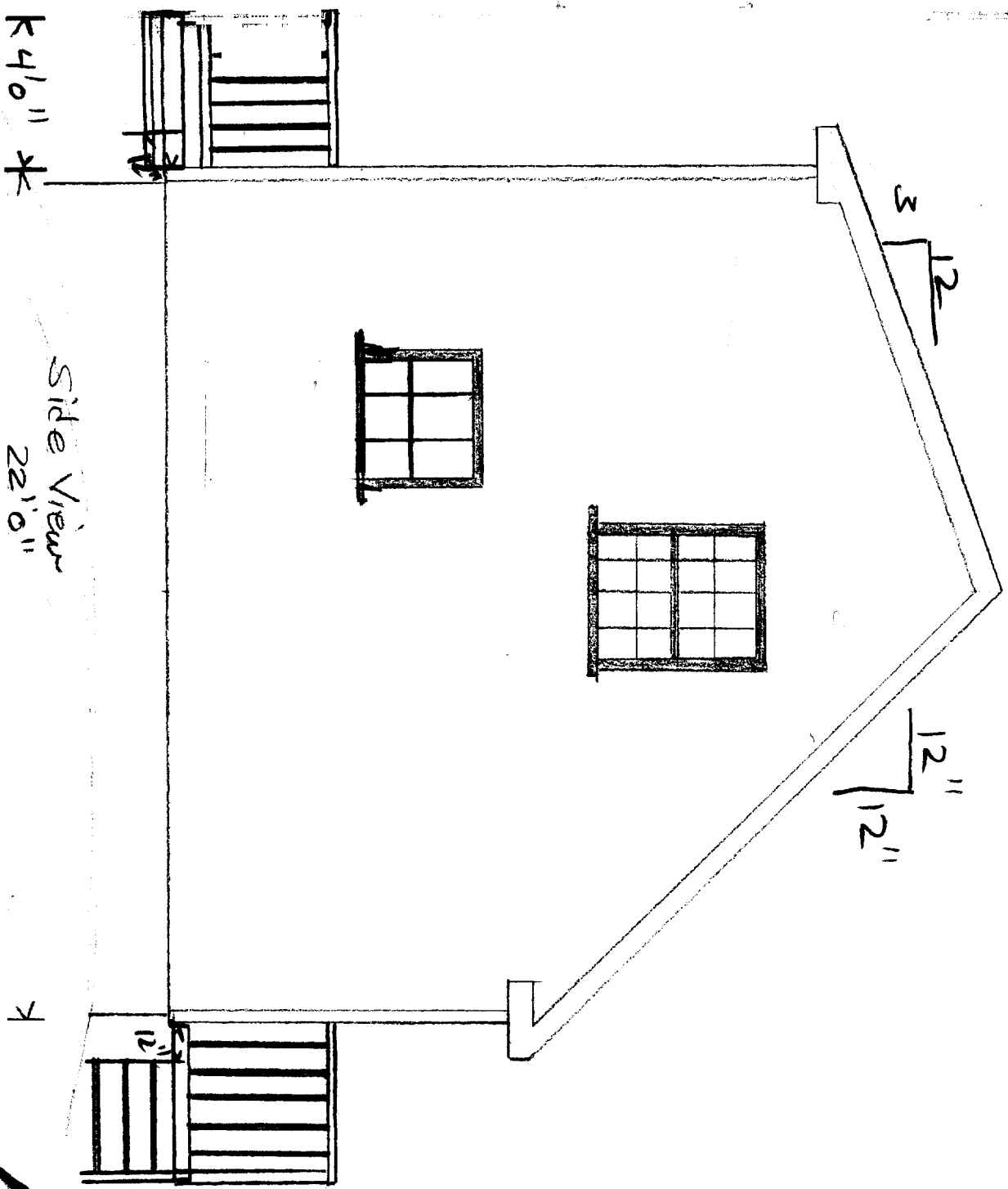


# HABITAT FOR HUMANITY

DRAWN BY:

ISSUE DATE  
JUNE 2004

A-3



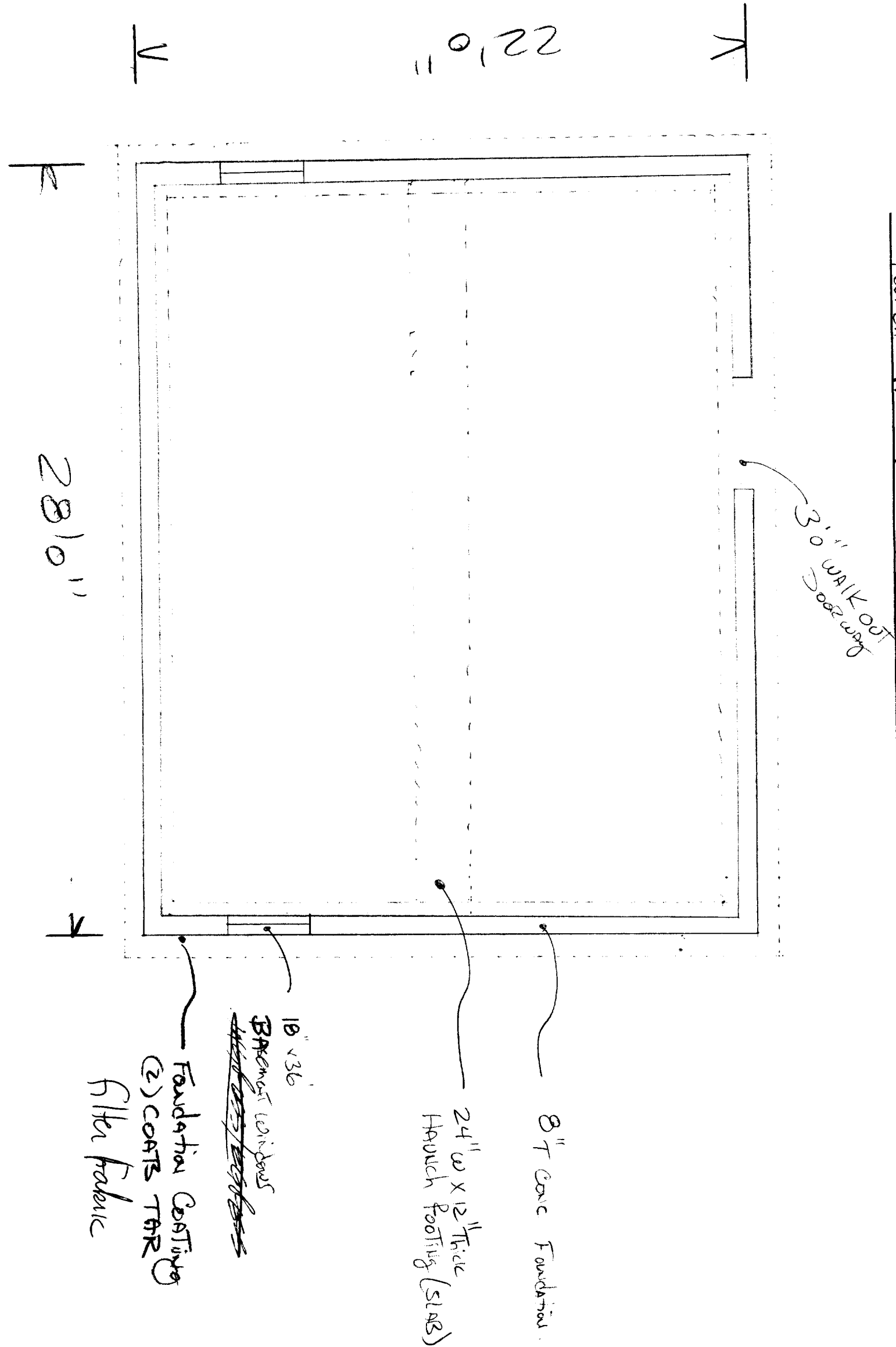
K 41'0" \*

Side View  
22'0"

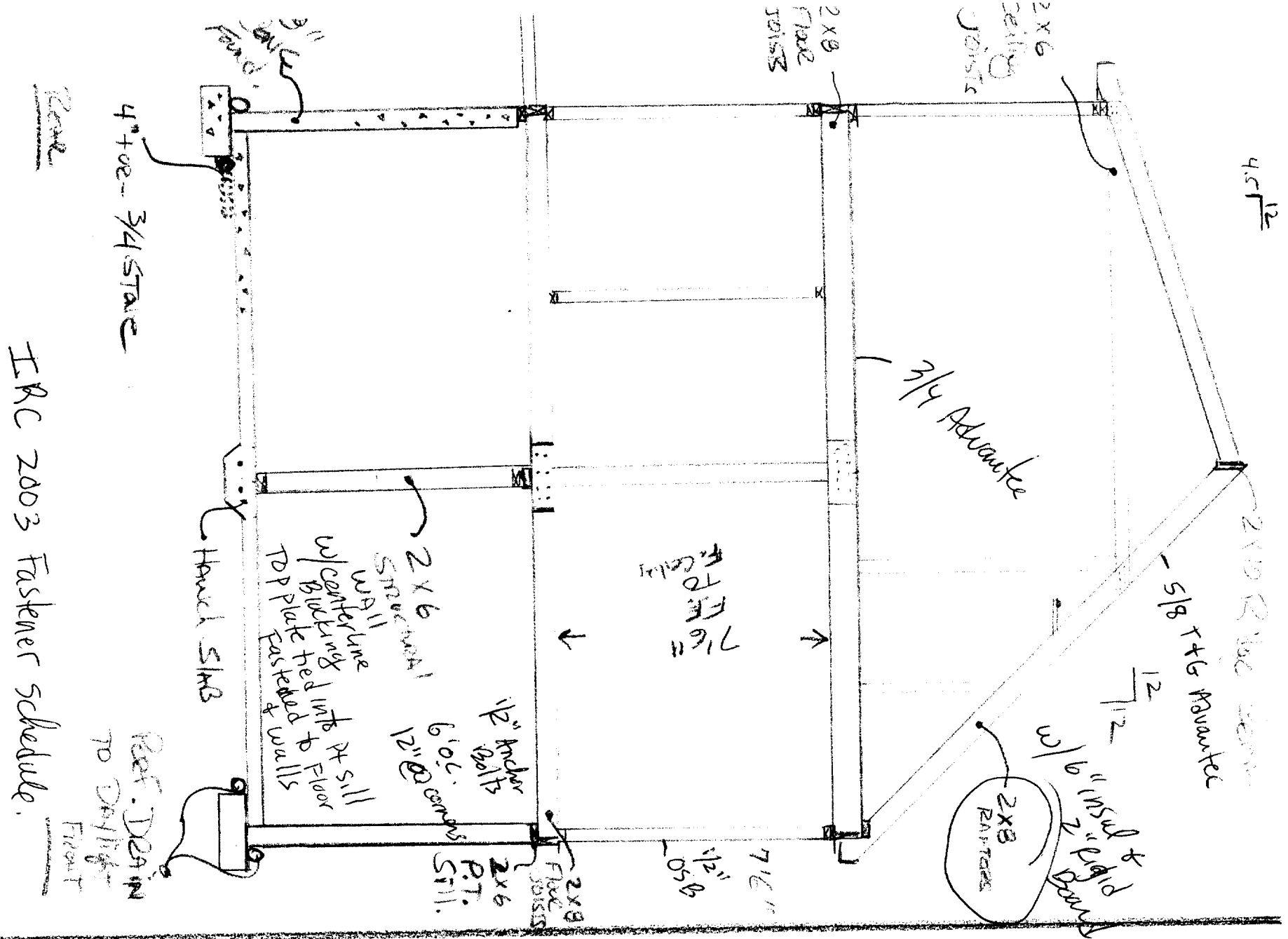
K

A14

Foundation Plan

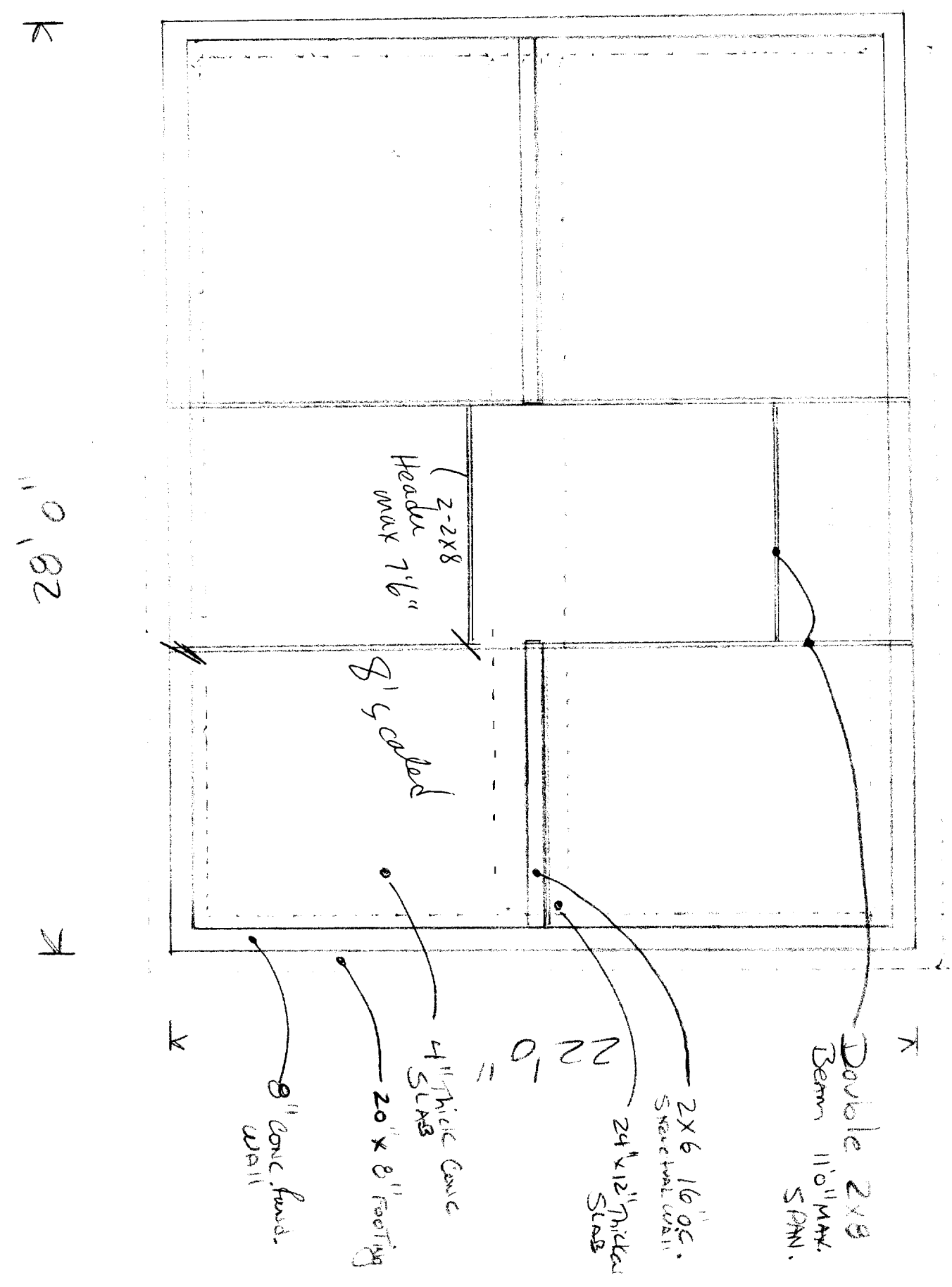


A-5



IRC 2003 Fastener Schedule.

Foundation Plans  
Front



11'0" B2

1<sup>ST</sup> Floor Plan

East 1 1/4" = 1'  
K 5'0" K

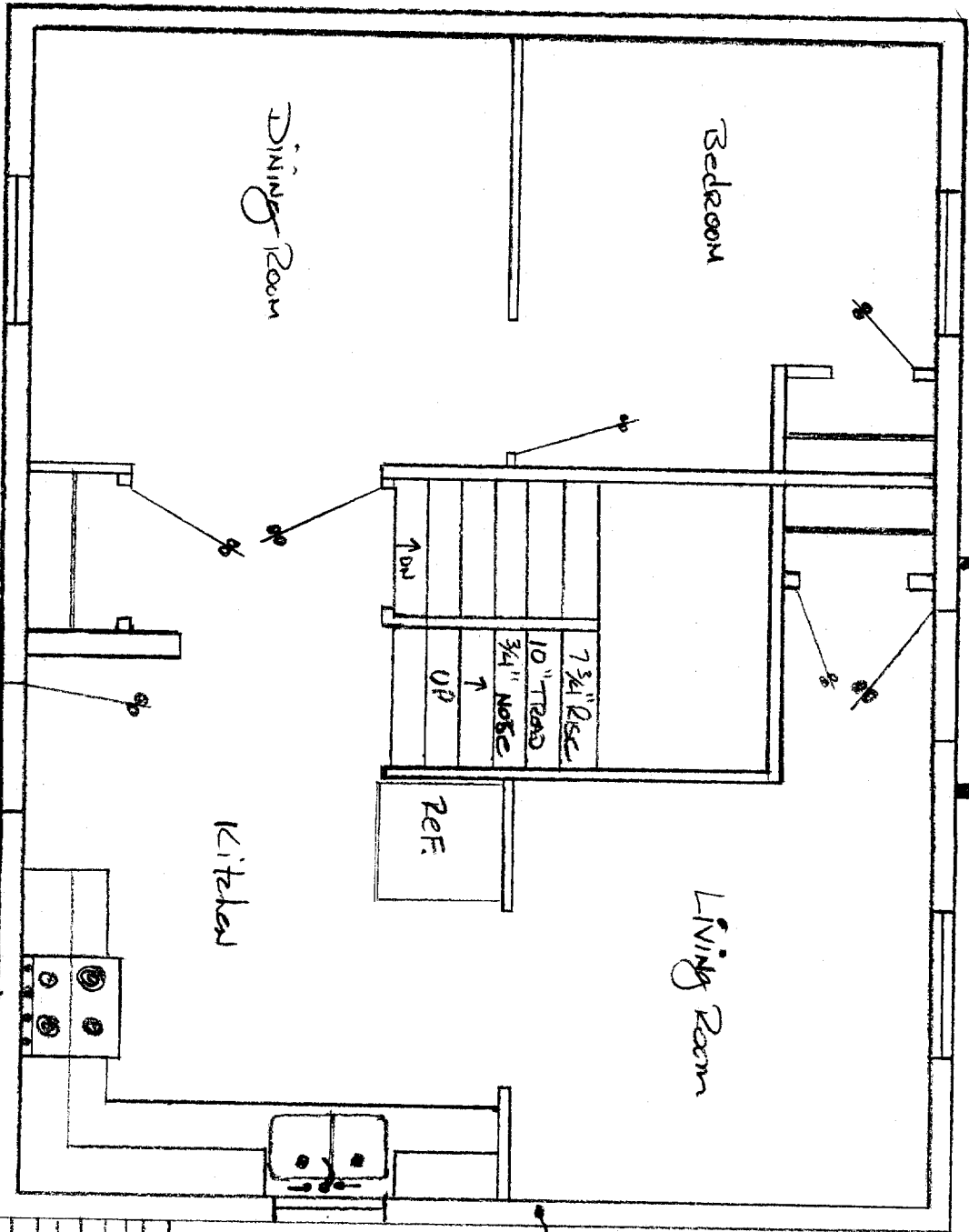
28'0"

K 3'1/4" K

CITY OF PORTLAND, MAINE  
APPROVED CONSTRUCTION PLANS  
JAN 24 2005  
SUPERSEDES ALL  
PREVIOUS DATED PLANS

K 5'0" K

22'0" =



1/2 TRU BOUZ  
at 16" o.c.  
JOIST HANGES

Double 2x8 Beams  
+ CENTER BEAM

2x8 PT. FRAME

4x4 RAILING POSTS BOULDED TO FRAME, (P.T.)

4x4 Posts Below Deck Level (P.T.)

STEPS TO BE MAX. 7 3/4 Rise  
+ MIN. 10" TREAD w/  
3/4" NOSE.  
w/graspable

DEPT. OF BUILDING INSPECTION  
CITY OF PORTLAND, ME  
JAN 24 2005  
RECEIVED

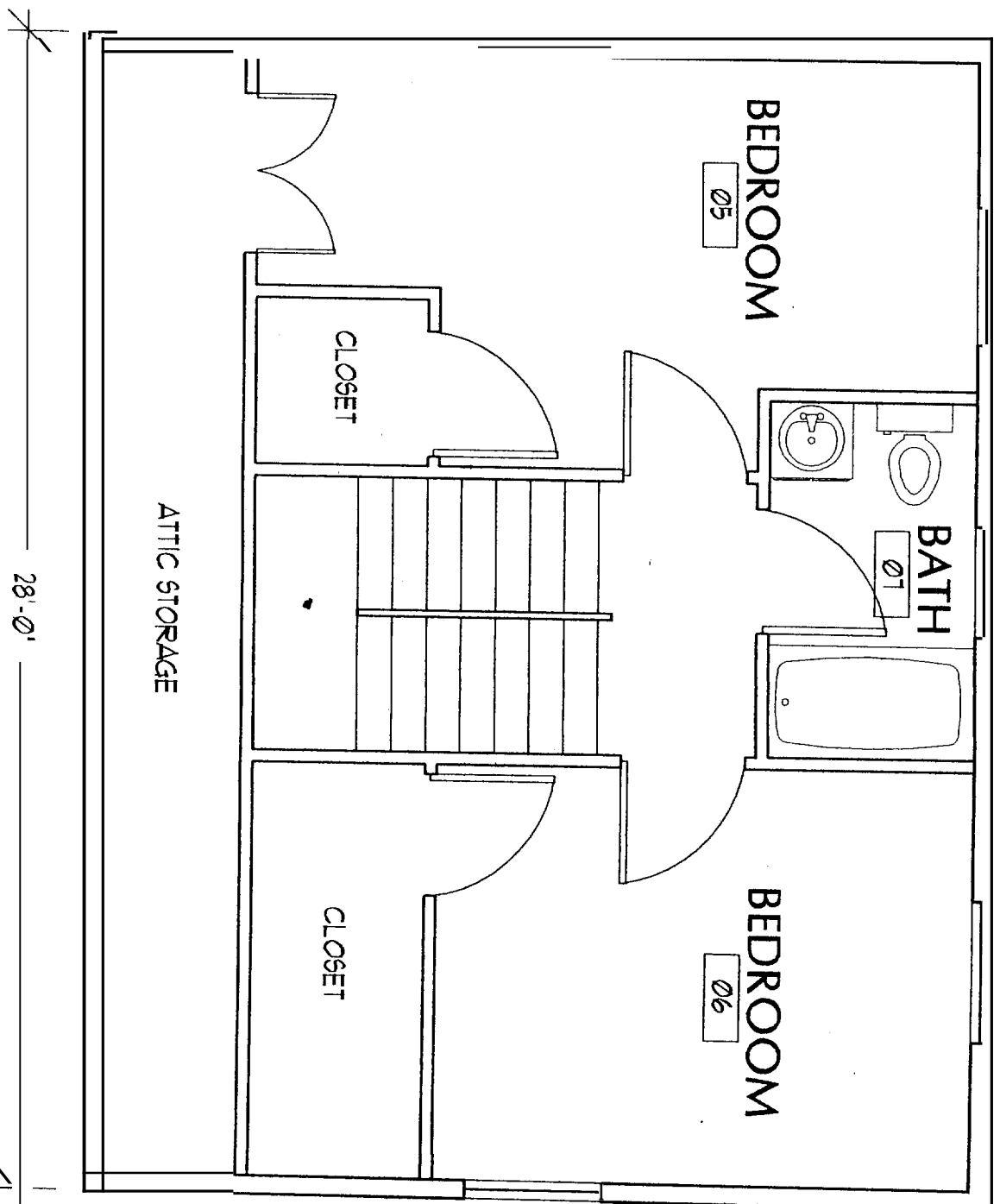
2x6 EXT WALL STUDS w/ R-19 INSULATION

**NOTES**

- All windows in bedrooms TO MEET Minimum egress Requirements
- All STAIRS (INTERIOR) TO BE A MAXIMUM 7 3/4" Rise + Minimum 10" TREAD w/ 3/4" NOSING.

A1

2ND Floor Plan  
1/4" = 1'



# HABITAT FOR HUMANITY

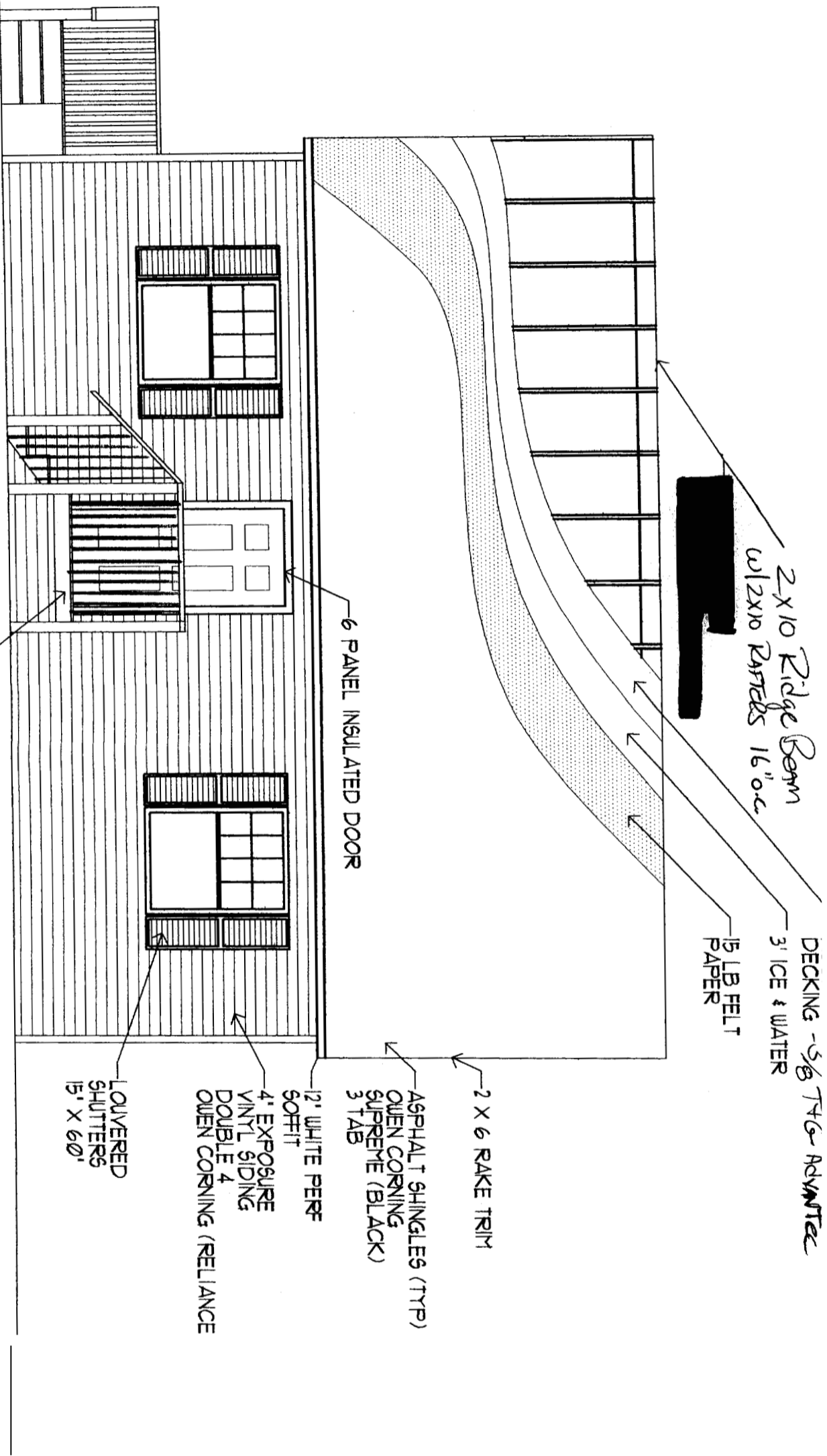
DRAWN BY:

ISSUE DATE

A-2



FRONT ELEVATION  
 1/4" = 1'



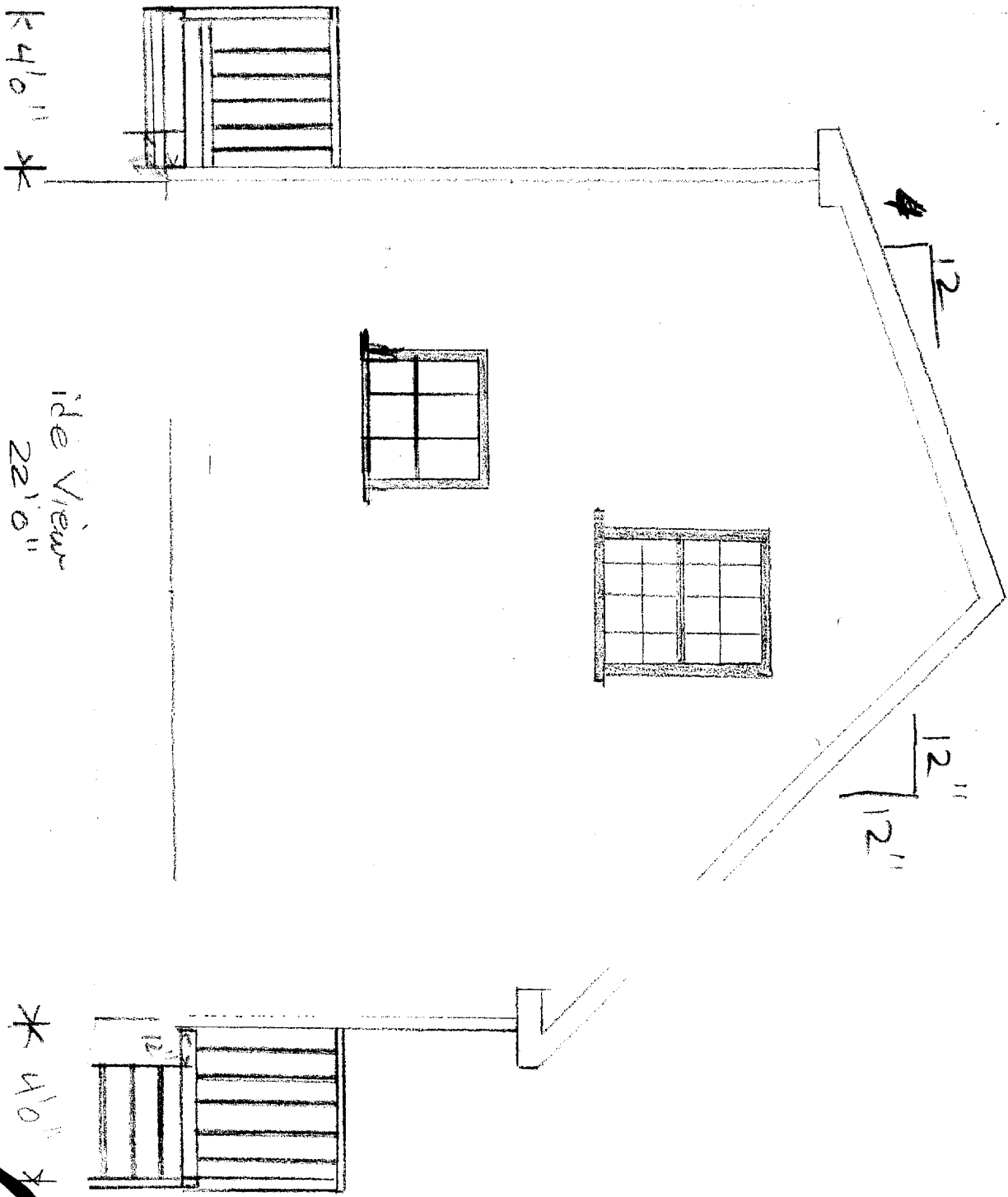
# HABITAT FOR HUMANITY

DRAWN BY:

ISSUE DATE  
 JUNE 2004

A-3

Side View  
1/4" = 1'

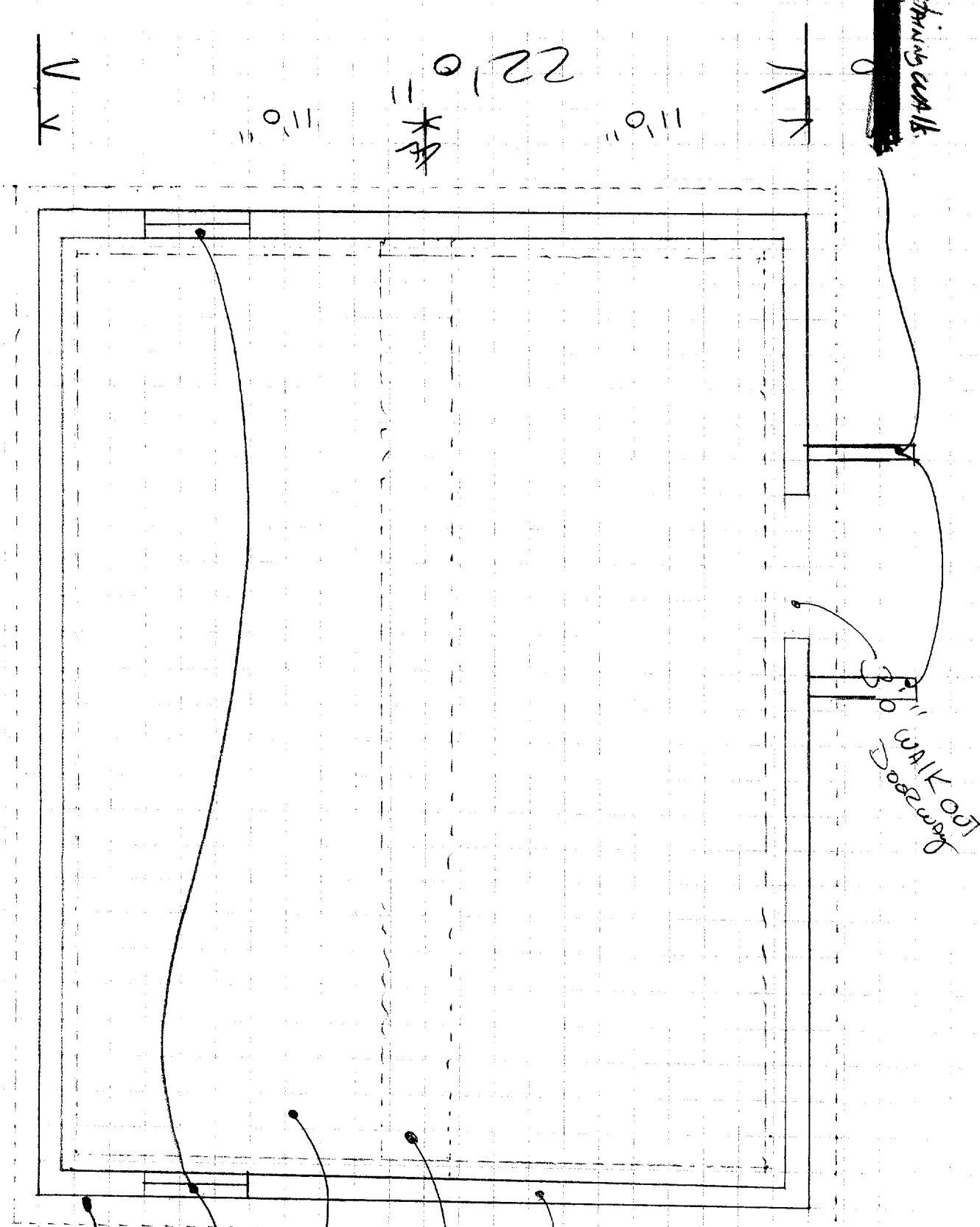


Side View  
22'0"

\* 4'0" \*  
**A4**

Foundation Plan Inc. WALK OUT BASEMENT

~~8" Conc Retaining walls.~~



3'0" WALK OUT Doorway

DEPT. OF BUILDING INSPECTION  
CITY OF PORTLAND, ME  
JAN 24 2005  
RECEIVED

8" Conc. Foundation

24" w x 12" Thick  
HATCH FOOTING (SLAB)

4" Thick Basement Floor  
(Conc w/ 6mil Vapor Barrier)  
18" x 36" Basement windows

Foundation Contingents  
(2) COATS TAR

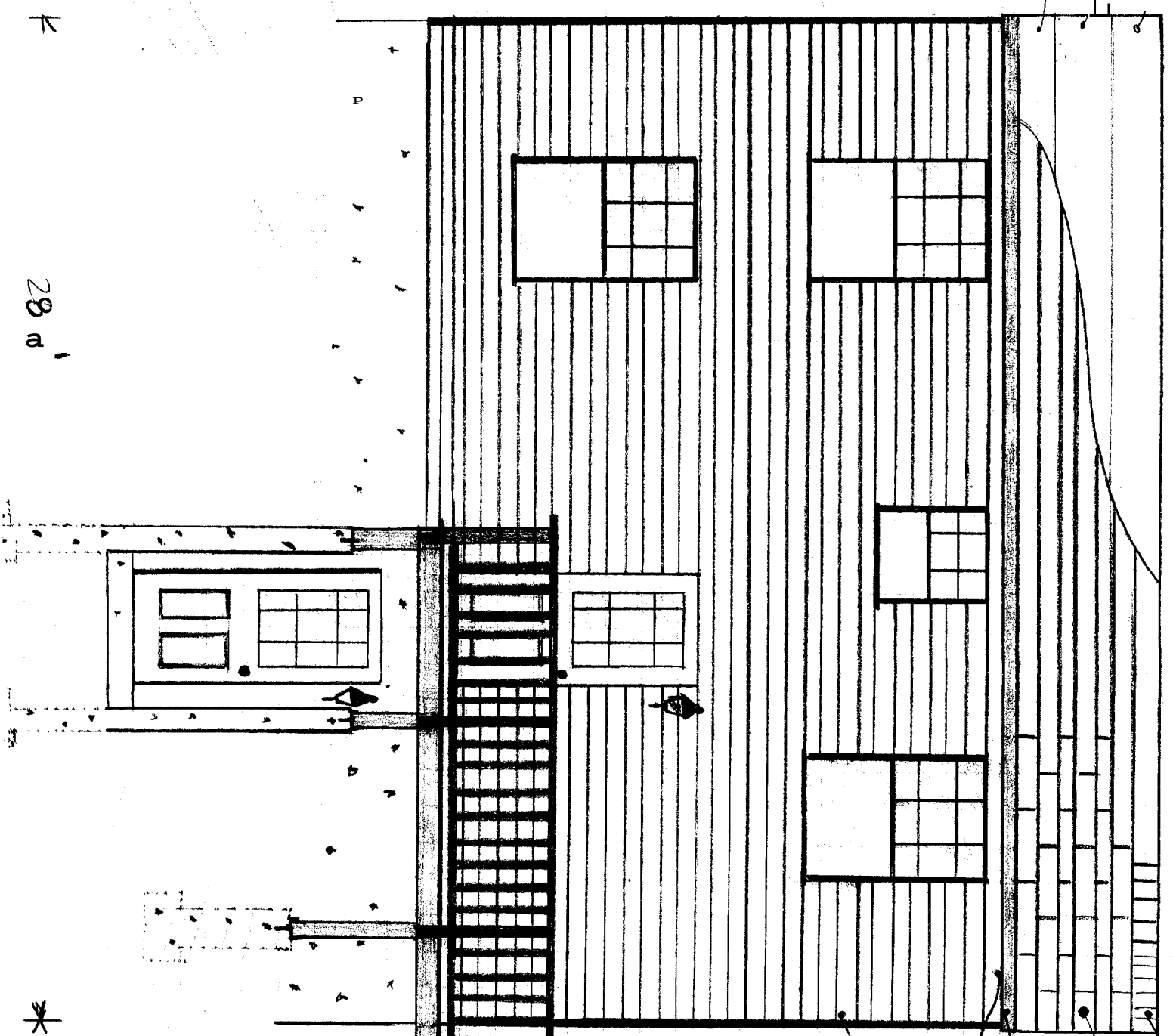
28'10"

A-5



Rear Elevation 1/4" = 1'

5/8 Ply.  
15 LB FELT  
Ice + water shield



Cobra Ridge Vent

Fiberglass or Asphalt shingles

Aluminum fascia  
vented soffit

Double 4" vinyl siding over TYPRE

DEPT. OF BUILDING INSPECTION  
CITY OF PORTLAND, ME  
JAN 24 2005  
RECEIVED

4x4 Bored end Posts  
2x2 Pickets MAX. 4" SPACE Between Pickets

2x8 PT. FEMME 16" OC,  
4x4 P.T. Posts. Bored to FEMME

Galv. Plate

\* 3'4" ↓

1/2" min. ↓

28'0" ↓

A7