

Julie Tupper IIDA
 re * fab design studio
 207 408 5950
 jat@maine.rr.com

Josef Chalot,
 Maine Registered Architect
 Azimuth LLC
 PO Box 6283
 327 Ocean House Road
 Cape Elizabeth, Maine 04107
 207-318-3234
 AzimuthBlu@gmail.com

Bennet Engineering, Inc.-MEP
 7 Bennett Road
 Freeport, Maine 04032: 207-865-9475

PROJECT:
 Tenant Renovations
 Maine Health
 901 Washington Avenue
 Portland Maine, 04101

Tenant: Maine Health
 901 Washington Avenue
 Portland Maine, 04101
 Contact: Amy Warrington
 Maine Health Care at Home

Property Representative
 MMC Property Management
 335 Brighton Avenue
 Portland Maine 04101
 Contact Robert Cloutier

Contractor:
 American Heritage Contractors
 35 Dennet Road
 Dayton, Maine 04005
 Contact: Richard Libby

City of Portland Information:
 Tax map , lot

Date	Purpose
2017-01-18	For Permit

Life Safety Existing
 Conditions & Demo
 Plan

Sheet Number

DLS-1

GENERAL ELECTRICAL DEMOLITION NOTES

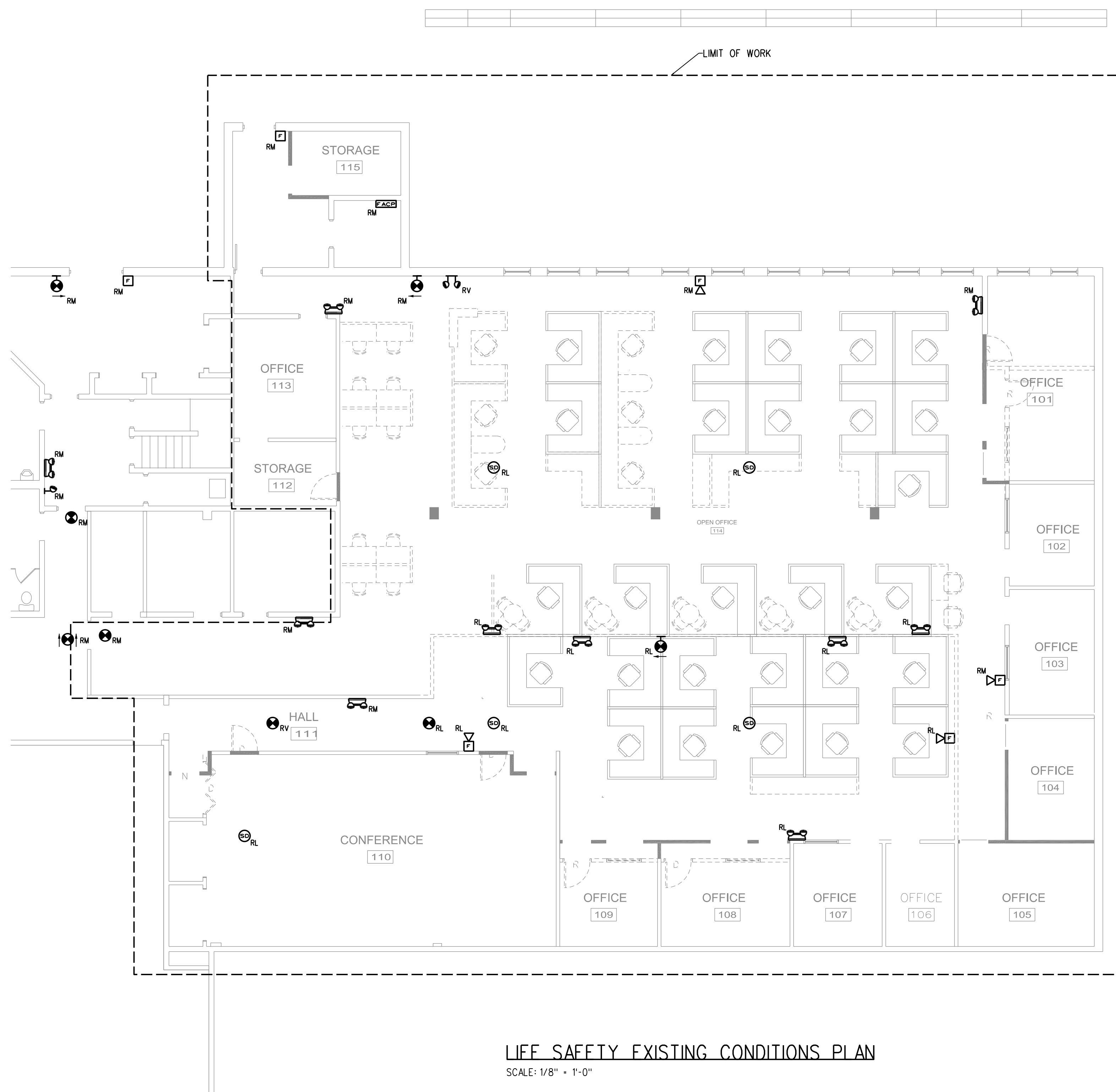
1. DEVICES TO BE REMOVED ARE SHOWN. CONTRACTOR IS RESPONSIBLE TO VISIT THE SITE TO MAKE THE FINAL DETERMINATION OF REMOVALS REQUIRED.

ELECTRICAL DEMOLITION LEGEND

- WP DENOTES WEATHERPROOF CONSTRUCTION
- RP DENOTES EXISTING ELECTRICAL EQUIPMENT TO BE REPLACED
- RM OR ETR DENOTES EXISTING ELECTRICAL EQUIPMENT TO REMAIN
- RL DENOTES EXISTING ELECTRICAL EQUIPMENT TO BE RELOCATED
- RV DENOTES EXISTING ELECTRICAL EQUIPMENT TO BE REMOVED

SYMBOL LEGEND

- SELF-CONTAINED EMERGENCY LIGHT W/2 HEADS DUAL-LITE (LED) MODEL LZ25NI-03L, 25 WATTS FOR 90 MINUTES, COLOR BY ARCHITECT
- EMERGENCY LIGHTING BATTERY PACK DUAL-LITE No LM130-12VI-0 SELF-DIAGNOSTIC
- INTERIOR REMOTE HEAD DUAL-LITE (LED) MODEL No CPRD 1203L, COLOR BY ARCHITECT
- EXTERIOR REMOTE HEAD DUAL-LITE (LED) MODEL No OCRD 1203L COLOR BY ARCHITECT
- EXIT LIGHT FIXTURE, UNSWITCHED, DUAL-LITE LX-U-R-W-E OR APPROVED EQUAL
- EXIT/ EMERGENCY LIGHT COMBO, DUAL-LITE No EVCU-R-D4-1OR APPROVED EQUAL COLOR BY ARCHITECT
- FIRE ALARM CONTROL PANEL WITH DEDICATED TELEPHONE JACK
- FIRE ALARM ANNUNCIATOR PANEL
- FIRE EXTINGUISHER ELECTRONIC MONITOR-SHALL BE ACCOMPLISHED THROUGH USE OF AN ADDRESSABLE INTERFACE DEVICE AND SHALL PROVIDE INPUT TO THE FACP
- FIRE ALARM AUDIO/VISUAL, MOUNT 6'-8" AFF, NUMBER DENOTES CANDELA RATING. "MH" DENOTES MINI HORN, "CL" DENOTES CEILING MOUNTED. NO DESIGNATION EQUALS 15cd
- FIRE ALARM PULL STATION, MOUNT 48" AFF
- FIRE ALARM VISUAL STROBE ONLY, FLUSH MOUNT 6'-8" AFF, NUMBER DENOTES CANDELA RATINGS. "CL" DENOTES CEILING MOUNTED
- SYSTEM CONNECTED SMOKE / CARBON MONOXIDE DETECTOR, PHOTOELECTRIC TYPE
- SYSTEM CONNECTED FIXED TEMPERATURE HEAT DETECTOR
- SMOKE DETECTOR, PHOTOELECTRIC TYPE, SYSTEM CONNECTED.
- SMOKE DETECTOR, PHOTOELECTRIC TYPE, SYSTEM CONNECTED. "ER" DENOTES ELEVATOR RECALL
- SYSTEM CONNECTED SMOKE DETECTOR, PHOTOELECTRIC TYPE, WITH SOUNDER BASE
- CARBON MONOXIDE DETECTOR



LIFE SAFETY EXISTING CONDITIONS PLAN
 SCALE: 1/8" = 1'-0"