

Julie Tupper IIDA  
 re \* fab design studio  
 207 408 5950  
 jat@maine.rr.com

Josef Chalot,  
 Maine Registered Architect  
 Azimuth LLC  
 PO Box 6283  
 327 Ocean House Road  
 Cape Elizabeth, Maine 04107  
 207-318-3234  
 AzimuthBlu@gmail.com

Bennet Engineering, Inc.-MEP  
 7 Bennett Road  
 Freeport, Maine 04032: 207-865-9475

**PROJECT:**  
 Tenant Renovations  
 Maine Health  
 901 Washington Avenue  
 Portland Maine, 04101

Tenant: Maine Health  
 901 Washington Avenue  
 Portland Maine, 04101  
 Contact: Amy Warrington  
 Maine Health Care at Home

Property Representative  
 MMC Property Management  
 335 Brighton Avenue  
 Portland Maine 04101  
 Contact Robert Cloutier

Contractor:  
 American Heritage Contractors  
 35 Dennet Road  
 Dayton, Maine 04005  
 Contact: Richard Libby

City of Portland Information:  
 Tax map , lot

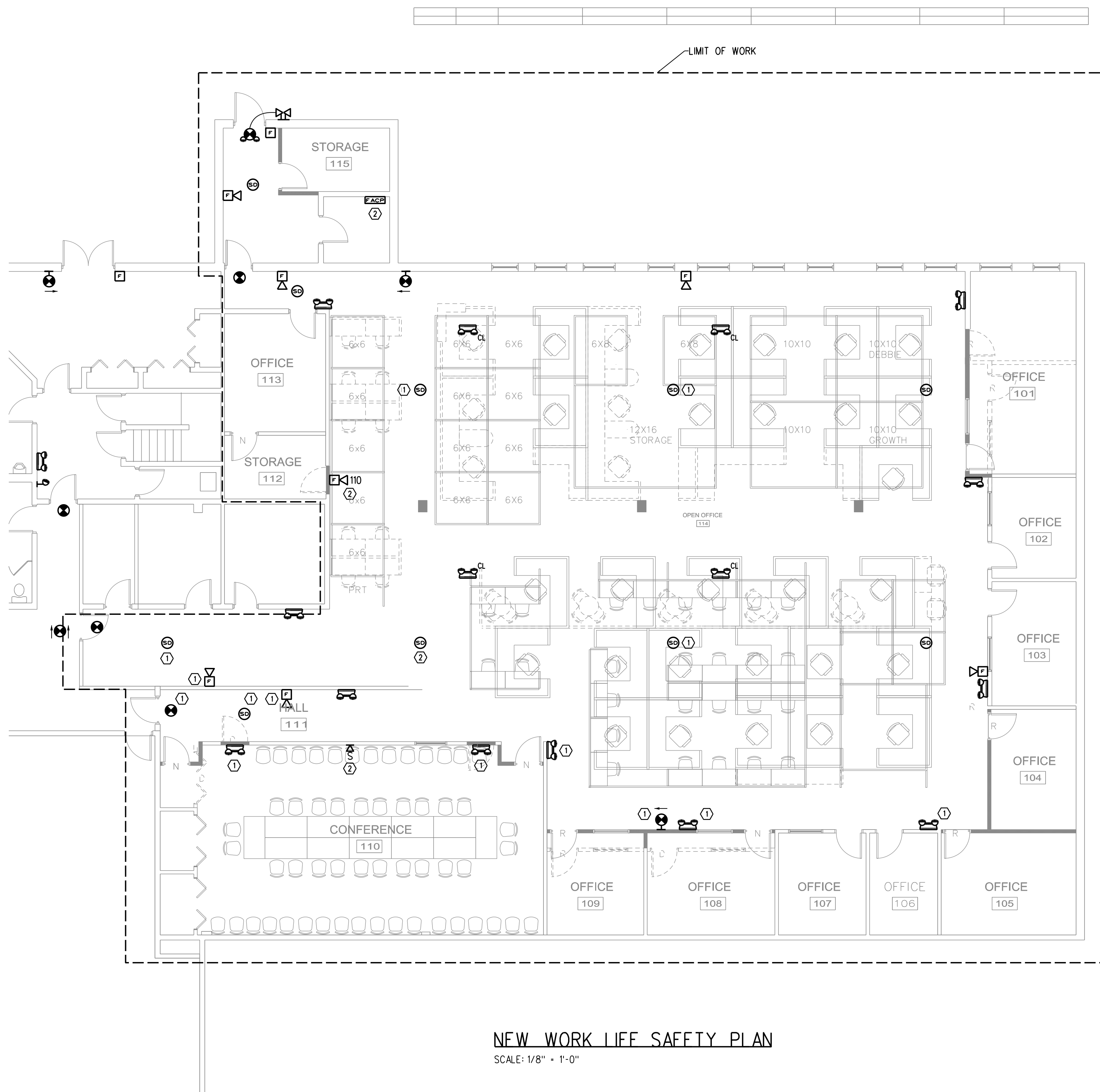
Date	Purpose
2017-01-18	For Permit

### ELECTRICAL WORK NOTES

- ① EXISTING RELOCATED DEVICE
- ② CONTRACTOR SHALL CONNECT NEW FIRE ALARM DEVICES TO EXISTING RADIONICS FIRE ALARM CONTROL PANEL (FACP).

### SYMBOL LEGEND

- SELF CONTAINED EMERGENCY LIGHT W/2 HEADS DUAL-LITE (LED) MODEL LZ25NI-03L, 25 WATTS FOR 90 MINUTES, COLOR BY ARCHITECT
- EMERGENCY LIGHTING BATTERY PACK DUAL-LITE No LM130-12V1-0 SELF-DIAGNOSTIC
- INTERIOR REMOTE HEAD DUAL-LITE (LED) MODEL No CPRD 1203L, COLOR BY ARCHITECT
- EXTERIOR REMOTE HEAD DUAL-LITE (LED) MODEL No OCRD 1203L COLOR BY ARCHITECT
- EXIT LIGHT FIXTURE, UNSWITCHED, DUAL-LITE LX-U-R-W-E OR APPROVED EQUAL
- EXIT/ EMERGENCY LIGHT COMBO, DUAL-LITE No EVCU-R-D4-1OR APPROVED EQUAL COLOR BY ARCHITECT
- FIRE ALARM CONTROL PANEL WITH DEDICATED TELEPHONE JACK
- FIRE ALARM ANNUCIATOR PANEL
- FIRE EXTINGUISHER ELECTRONIC MONITOR-SHALL BE ACCOMPLISHED THROUGH USE OF AN ADDRESSABLE INTERFACE DEVICE AND SHALL PROVIDE INPUT TO THE FACP
- FIRE ALARM AUDIO/VISUAL, MOUNT 6'-8" AFF, NUMBER DENOTES CANDELA RATING. "MH" DENOTES MINHORN, "CL" DENOTES CEILING MOUNTED. NO DESIGNATION EQUALS 15cd
- FIRE ALARM PULL STATION, MOUNT 48" AFF
- FIRE ALARM VISUAL STROBE ONLY, FLUSH MOUNT 6'-8" AFF, NUMBER DENOTES CANDELA RATINGS. "CL" DENOTES CEILING MOUNTED
- SYSTEM CONNECTED SMOKE / CARBON MONOXIDE DETECTOR, PHOTOELECTRIC TYPE
- SYSTEM CONNECTED FIXED TEMPERATURE HEAT DETECTOR
- SMOKE DETECTOR, PHOTOELECTRIC TYPE, SYSTEM CONNECTED.
- SMOKE DETECTOR, PHOTOELECTRIC TYPE, SYSTEM CONNECTED. "ER" DENOTES ELEVATOR RECALL
- SYSTEM CONNECTED SMOKE DETECTOR, PHOTOELECTRIC TYPE, WITH SOUNDER BASE
- CARBON MONOXIDE DETECTOR



### NEW WORK LIFE SAFETY PLAN

SCALE: 1/8" = 1'-0"

Life Safety Plan

Sheet Number

# LS-1