

Application ID Number: 2-0753

Delete

Save

Close

Department: Building

Status: Approved with Conditions

Reviewer: Mike Nugent

Comments:

[Empty text area for comments]

Approval Date: 08/02/2002

Given On Date: 07/29/2002

OK to Issue Permit

Name: Mike Nugent

Date: 08/02/2002

Date 2: [Empty]

Conditions Section:

Add New Condition From

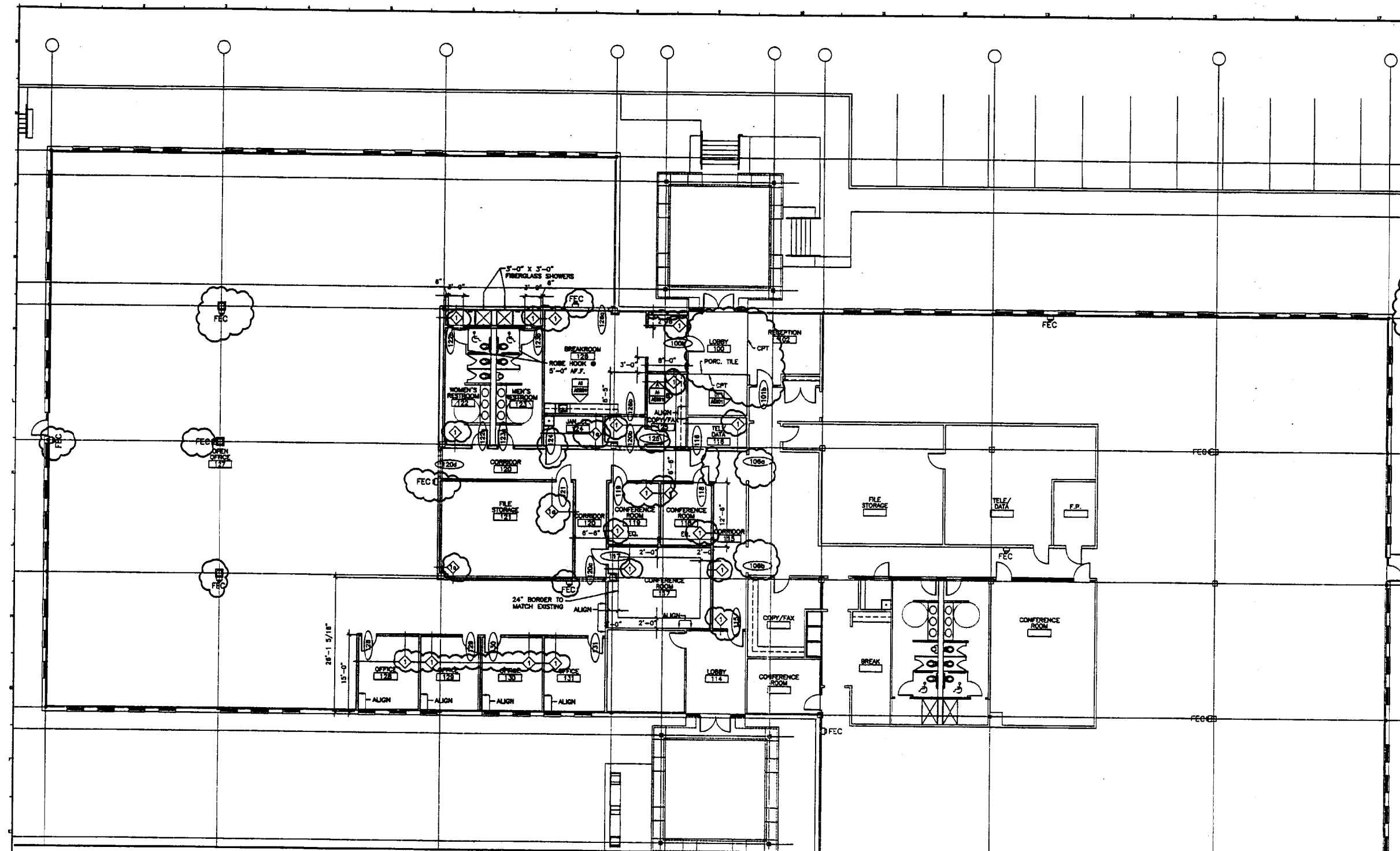
Add New Condition

Delete Condition

Separate HVAC permit required

Create Date: 07/11/2002 By: jmy

Update Date: 08/02/2002 By: mjn



- GENERAL NOTES:**
1. ALL DOORS ARE 3'-0" X 7'-0" (U.G.N.)
 2. BASE DRAWING BY NKTA
 3. 100 SQUARE FEET GROSS PER OCCUPANT, TOTAL SQUARE FOOTAGE 13,618

TOILET ACCESSORY SCHEDULE

TAG	DESCRIPTION	PROVIDE
11	ROBE HOOK	PROVIDE
12	SHELF	PROVIDE
13	SHOWER CURTAIN	PROVIDE

PARTITION LEGEND

- ◆ 3 - 5/8" MTL. STUDS, PLACED 16" O.C. W/ (1) LAYER OF 5/8" GWB EACH SIDE. FULL HEIGHT ASSEMBLY.
- ◇ SHOEK PARTITION 3-5/8" MTL. STUDS, PLACED 16" O.C. W/ (3) LAYER OF 5/8" GWB EACH SIDE. SEALED PERIMETER AND ALL PENETRATIONS WITH FIRE STOPPING SEALANT FOR SMOKE TIGHT ASSEMBLY.

REV.	DESCRIPTION	DATE
0	ISSUED FOR CONSTRUCTION	06-18-02

ISSUED FOR CONSTRUCTION
06-18-02

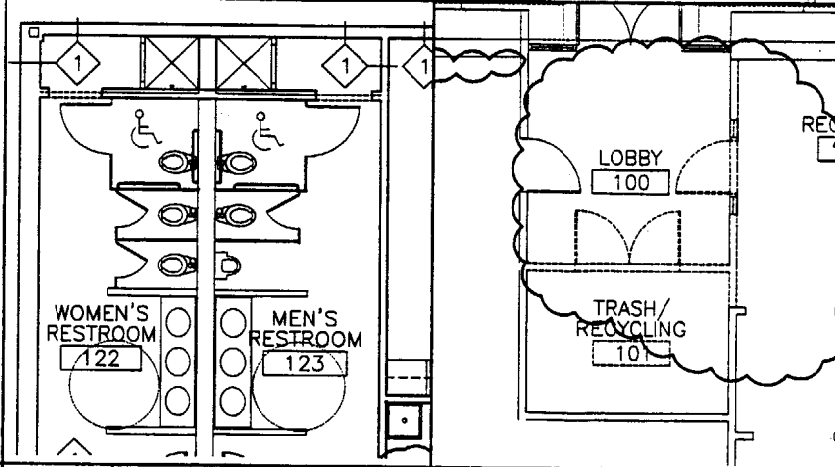
CURRENT ISSUE STATUS:

SMRT ARCHITECTURE ENGINEERING PLANNING
 144 Pine Street, 3rd Fl., Box 618
 Portland, Maine 04104
 TEL: (207) 775-3046
 FAX: (207) 775-1070

DRMS/CORE
 WASHINGTON AVE FIT-UP, PHASE 2
 PORTLAND, ME

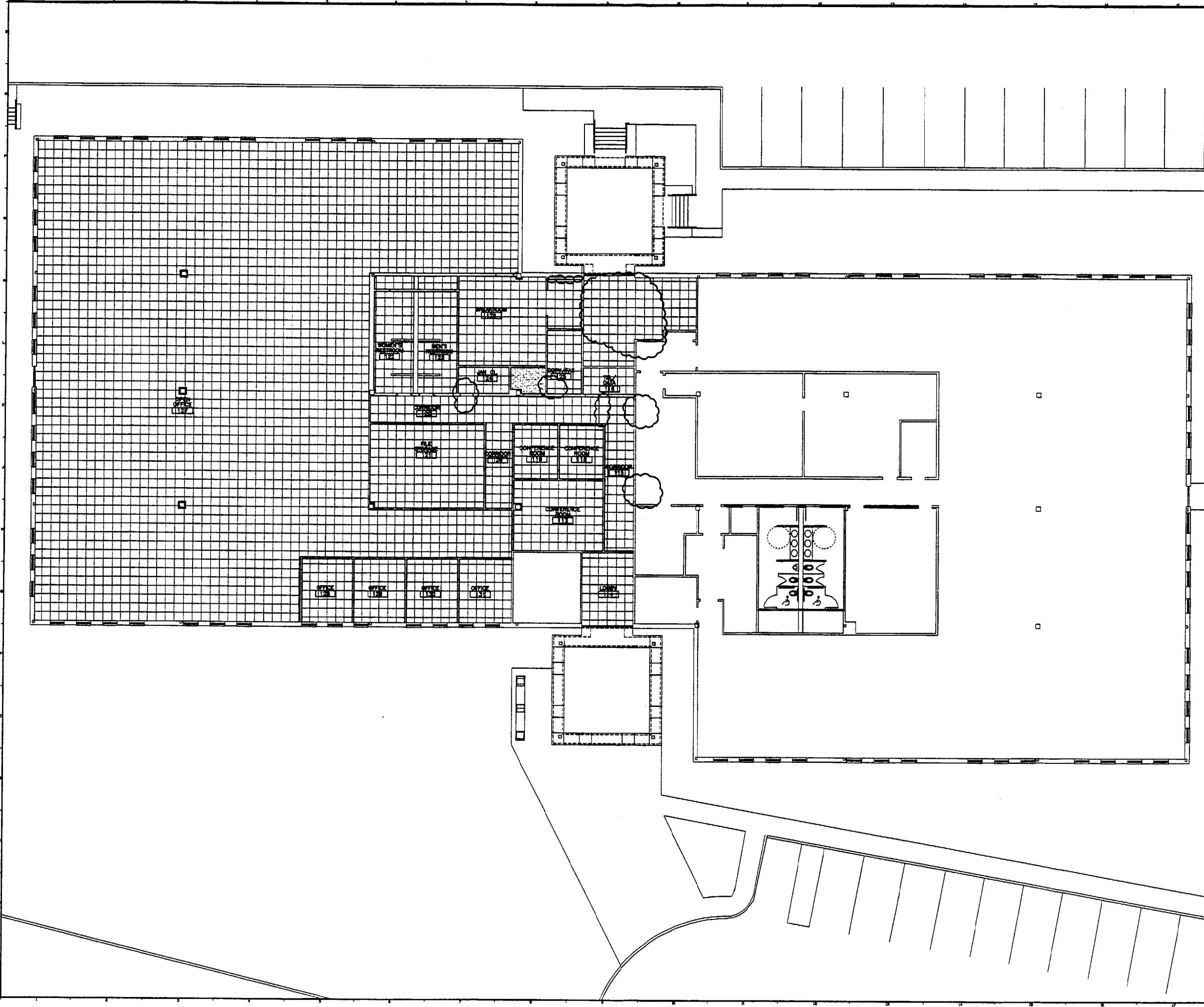
FLOOR PLAN & PROPOSED DEMOLITION

SHEET TITLE:	1/8"=1'-0"	DATE:	06-18-02
PROJECT MANAGER:	AWF	GRAPHIC SCALE:	1"=10'
JOB CAP/DRAWN:	LMG	SHEET No.	
A/E OF RECORD:	SLB	SMRT CAD FILE:	AE101-02002-02
PROJECT No.	02002-12		AE101



A12 PROPOSED DEMOLITION
 1/4" = 1'-0" AE101

A15 PROPOSED DEMOLITION
 1/4" = 1'-0" AE101



- GENERAL NOTES:**
1. ALL DOORS ARE 3'-0" X 7'-0" (U.O.N.)
 2. BASE DRAWING BY HKTA
 3. 100 SQUARE FEET GROSS PER OCCUPANT, TOTAL SQUARE FOOTAGE 13,618

REV.	DESCRIPTION	DATE
0	ISSUED FOR CONSTRUCTION	06-18-02

ISSUED FOR CONSTRUCTION
06-18-02

CURRENT ISSUE STATUS:



SMRT ARCHITECTURE ENGINEERING PLANNING
SMRT
144 Park Street, 7th Fl., Box 1118
Portland, Maine 04101
TEL: (207) 773-3846
FAX: (207) 773-1029

DRMS/CORE
WASHINGTON AVE FIT-UP, PHASE 2
PORTLAND, ME

REFLECTED CEILING PLAN

SHEET TITLE:	
SCALE: 1/8"=1'-0"	DATE: 06-18-02
PROJECT MANAGER: AWF	GRAPHIC SCALE: 0" = 1'
JOB CAP/DRAWN: LMC	
A/E OF RECORD: SLB	SHEET No.
SMRT CAD FILE: AE101-02002-02	AE110
PROJECT No. 02002-02	

ROOM FINISH SCHEDULE											
ROOM NUMBER	ROOM NAME	FLOOR	WALL	CEILING	DOOR	TRAY	TRAY	TRAY	TRAY	TRAY	TRAY
100	LOBBY	OP-1	PA-1	CP-1	DO-1	TR-1	TR-1	TR-1	TR-1	TR-1	TR-1
101	RECEPTION	OP-1	PA-1	CP-1	DO-1	TR-1	TR-1	TR-1	TR-1	TR-1	TR-1
114	LOBBY	OP-1	PA-1	CP-1	DO-1	TR-1	TR-1	TR-1	TR-1	TR-1	TR-1
115	CONFERENCE	OP-1	PA-1	CP-1	DO-1	TR-1	TR-1	TR-1	TR-1	TR-1	TR-1
116	RECEPTION	OP-1	PA-1	CP-1	DO-1	TR-1	TR-1	TR-1	TR-1	TR-1	TR-1
117	CONFERENCE ROOM	OP-1	PA-1	CP-1	DO-1	TR-1	TR-1	TR-1	TR-1	TR-1	TR-1
118	CONFERENCE ROOM	OP-1	PA-1	CP-1	DO-1	TR-1	TR-1	TR-1	TR-1	TR-1	TR-1
119	CONFERENCE ROOM	OP-1	PA-1	CP-1	DO-1	TR-1	TR-1	TR-1	TR-1	TR-1	TR-1
120	CONFERENCE ROOM	OP-1	PA-1	CP-1	DO-1	TR-1	TR-1	TR-1	TR-1	TR-1	TR-1
121	CONFERENCE ROOM	OP-1	PA-1	CP-1	DO-1	TR-1	TR-1	TR-1	TR-1	TR-1	TR-1
122	CONFERENCE ROOM	OP-1	PA-1	CP-1	DO-1	TR-1	TR-1	TR-1	TR-1	TR-1	TR-1
123	CONFERENCE ROOM	OP-1	PA-1	CP-1	DO-1	TR-1	TR-1	TR-1	TR-1	TR-1	TR-1
124	CONFERENCE ROOM	OP-1	PA-1	CP-1	DO-1	TR-1	TR-1	TR-1	TR-1	TR-1	TR-1
125	CONFERENCE ROOM	OP-1	PA-1	CP-1	DO-1	TR-1	TR-1	TR-1	TR-1	TR-1	TR-1
126	CONFERENCE ROOM	OP-1	PA-1	CP-1	DO-1	TR-1	TR-1	TR-1	TR-1	TR-1	TR-1
127	CONFERENCE ROOM	OP-1	PA-1	CP-1	DO-1	TR-1	TR-1	TR-1	TR-1	TR-1	TR-1
128	CONFERENCE ROOM	OP-1	PA-1	CP-1	DO-1	TR-1	TR-1	TR-1	TR-1	TR-1	TR-1
129	CONFERENCE ROOM	OP-1	PA-1	CP-1	DO-1	TR-1	TR-1	TR-1	TR-1	TR-1	TR-1
130	CONFERENCE ROOM	OP-1	PA-1	CP-1	DO-1	TR-1	TR-1	TR-1	TR-1	TR-1	TR-1
131	CONFERENCE ROOM	OP-1	PA-1	CP-1	DO-1	TR-1	TR-1	TR-1	TR-1	TR-1	TR-1
132	CONFERENCE ROOM	OP-1	PA-1	CP-1	DO-1	TR-1	TR-1	TR-1	TR-1	TR-1	TR-1
133	CONFERENCE ROOM	OP-1	PA-1	CP-1	DO-1	TR-1	TR-1	TR-1	TR-1	TR-1	TR-1
134	CONFERENCE ROOM	OP-1	PA-1	CP-1	DO-1	TR-1	TR-1	TR-1	TR-1	TR-1	TR-1
135	CONFERENCE ROOM	OP-1	PA-1	CP-1	DO-1	TR-1	TR-1	TR-1	TR-1	TR-1	TR-1
136	CONFERENCE ROOM	OP-1	PA-1	CP-1	DO-1	TR-1	TR-1	TR-1	TR-1	TR-1	TR-1
137	CONFERENCE ROOM	OP-1	PA-1	CP-1	DO-1	TR-1	TR-1	TR-1	TR-1	TR-1	TR-1
138	CONFERENCE ROOM	OP-1	PA-1	CP-1	DO-1	TR-1	TR-1	TR-1	TR-1	TR-1	TR-1
139	CONFERENCE ROOM	OP-1	PA-1	CP-1	DO-1	TR-1	TR-1	TR-1	TR-1	TR-1	TR-1
140	CONFERENCE ROOM	OP-1	PA-1	CP-1	DO-1	TR-1	TR-1	TR-1	TR-1	TR-1	TR-1
141	CONFERENCE ROOM	OP-1	PA-1	CP-1	DO-1	TR-1	TR-1	TR-1	TR-1	TR-1	TR-1
142	CONFERENCE ROOM	OP-1	PA-1	CP-1	DO-1	TR-1	TR-1	TR-1	TR-1	TR-1	TR-1
143	CONFERENCE ROOM	OP-1	PA-1	CP-1	DO-1	TR-1	TR-1	TR-1	TR-1	TR-1	TR-1
144	CONFERENCE ROOM	OP-1	PA-1	CP-1	DO-1	TR-1	TR-1	TR-1	TR-1	TR-1	TR-1
145	CONFERENCE ROOM	OP-1	PA-1	CP-1	DO-1	TR-1	TR-1	TR-1	TR-1	TR-1	TR-1
146	CONFERENCE ROOM	OP-1	PA-1	CP-1	DO-1	TR-1	TR-1	TR-1	TR-1	TR-1	TR-1
147	CONFERENCE ROOM	OP-1	PA-1	CP-1	DO-1	TR-1	TR-1	TR-1	TR-1	TR-1	TR-1
148	CONFERENCE ROOM	OP-1	PA-1	CP-1	DO-1	TR-1	TR-1	TR-1	TR-1	TR-1	TR-1
149	CONFERENCE ROOM	OP-1	PA-1	CP-1	DO-1	TR-1	TR-1	TR-1	TR-1	TR-1	TR-1
150	CONFERENCE ROOM	OP-1	PA-1	CP-1	DO-1	TR-1	TR-1	TR-1	TR-1	TR-1	TR-1

FINISH ABBREVIATIONS

OP-1: OPEN WORK
 PA-1: PAINT
 CP-1: CEILING
 DO-1: DOOR
 TR-1: TRAY

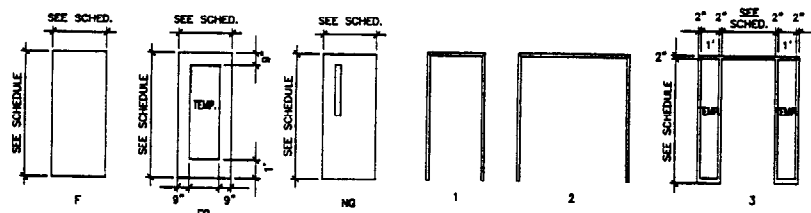
DOOR SCHEDULE											
ROOM NUMBER	ROOM NAME	DOOR TYPE	FINISH	SWING	HEIGHT	WIDTH	THRESHOLD	REMARKS	REMARKS	REMARKS	REMARKS
100	LOBBY	DO-1	PA-1	R	7'-0"	3'-0"	1/2"				
101	RECEPTION	DO-1	PA-1	R	7'-0"	3'-0"	1/2"				
114	LOBBY	DO-1	PA-1	R	7'-0"	3'-0"	1/2"				
115	CONFERENCE	DO-1	PA-1	R	7'-0"	3'-0"	1/2"				
116	RECEPTION	DO-1	PA-1	R	7'-0"	3'-0"	1/2"				
117	CONFERENCE ROOM	DO-1	PA-1	R	7'-0"	3'-0"	1/2"				
118	CONFERENCE ROOM	DO-1	PA-1	R	7'-0"	3'-0"	1/2"				
119	CONFERENCE ROOM	DO-1	PA-1	R	7'-0"	3'-0"	1/2"				
120	CONFERENCE ROOM	DO-1	PA-1	R	7'-0"	3'-0"	1/2"				
121	CONFERENCE ROOM	DO-1	PA-1	R	7'-0"	3'-0"	1/2"				
122	CONFERENCE ROOM	DO-1	PA-1	R	7'-0"	3'-0"	1/2"				
123	CONFERENCE ROOM	DO-1	PA-1	R	7'-0"	3'-0"	1/2"				
124	CONFERENCE ROOM	DO-1	PA-1	R	7'-0"	3'-0"	1/2"				
125	CONFERENCE ROOM	DO-1	PA-1	R	7'-0"	3'-0"	1/2"				
126	CONFERENCE ROOM	DO-1	PA-1	R	7'-0"	3'-0"	1/2"				
127	CONFERENCE ROOM	DO-1	PA-1	R	7'-0"	3'-0"	1/2"				
128	CONFERENCE ROOM	DO-1	PA-1	R	7'-0"	3'-0"	1/2"				
129	CONFERENCE ROOM	DO-1	PA-1	R	7'-0"	3'-0"	1/2"				
130	CONFERENCE ROOM	DO-1	PA-1	R	7'-0"	3'-0"	1/2"				
131	CONFERENCE ROOM	DO-1	PA-1	R	7'-0"	3'-0"	1/2"				
132	CONFERENCE ROOM	DO-1	PA-1	R	7'-0"	3'-0"	1/2"				
133	CONFERENCE ROOM	DO-1	PA-1	R	7'-0"	3'-0"	1/2"				
134	CONFERENCE ROOM	DO-1	PA-1	R	7'-0"	3'-0"	1/2"				
135	CONFERENCE ROOM	DO-1	PA-1	R	7'-0"	3'-0"	1/2"				
136	CONFERENCE ROOM	DO-1	PA-1	R	7'-0"	3'-0"	1/2"				
137	CONFERENCE ROOM	DO-1	PA-1	R	7'-0"	3'-0"	1/2"				
138	CONFERENCE ROOM	DO-1	PA-1	R	7'-0"	3'-0"	1/2"				
139	CONFERENCE ROOM	DO-1	PA-1	R	7'-0"	3'-0"	1/2"				
140	CONFERENCE ROOM	DO-1	PA-1	R	7'-0"	3'-0"	1/2"				
141	CONFERENCE ROOM	DO-1	PA-1	R	7'-0"	3'-0"	1/2"				
142	CONFERENCE ROOM	DO-1	PA-1	R	7'-0"	3'-0"	1/2"				
143	CONFERENCE ROOM	DO-1	PA-1	R	7'-0"	3'-0"	1/2"				
144	CONFERENCE ROOM	DO-1	PA-1	R	7'-0"	3'-0"	1/2"				
145	CONFERENCE ROOM	DO-1	PA-1	R	7'-0"	3'-0"	1/2"				
146	CONFERENCE ROOM	DO-1	PA-1	R	7'-0"	3'-0"	1/2"				
147	CONFERENCE ROOM	DO-1	PA-1	R	7'-0"	3'-0"	1/2"				
148	CONFERENCE ROOM	DO-1	PA-1	R	7'-0"	3'-0"	1/2"				
149	CONFERENCE ROOM	DO-1	PA-1	R	7'-0"	3'-0"	1/2"				
150	CONFERENCE ROOM	DO-1	PA-1	R	7'-0"	3'-0"	1/2"				

DOOR SCHEDULE REMARKS

1. ALL DOORS TO BE 7'-0" HIGH, FINISHED TO MATCH DOORS.
 2. ALL DOORS TO BE 3'-0" WIDE, FINISHED TO MATCH DOORS.
 3. ALL DOORS TO BE 1/2" THRESHOLD, FINISHED TO MATCH DOORS.
 4. ALL DOORS TO BE PAINT FINISH, FINISHED TO MATCH DOORS.
 5. ALL DOORS TO BE RHT SWING, FINISHED TO MATCH DOORS.
 6. ALL DOORS TO BE OPEN WORK, FINISHED TO MATCH DOORS.
 7. ALL DOORS TO BE PAINT FINISH, FINISHED TO MATCH DOORS.
 8. ALL DOORS TO BE CEILING FINISH, FINISHED TO MATCH DOORS.
 9. ALL DOORS TO BE DOOR FINISH, FINISHED TO MATCH DOORS.
 10. ALL DOORS TO BE TRAY FINISH, FINISHED TO MATCH DOORS.

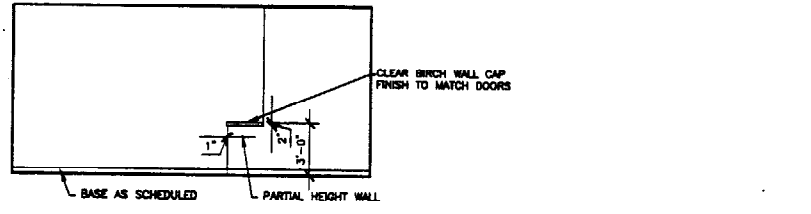
NOTES

1. FILL EVERY CELL.



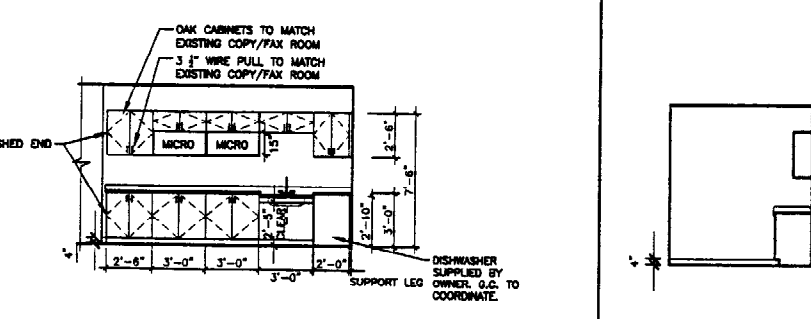
G1 DOOR SCHEDULE

1/4" = 1'-0" AE101



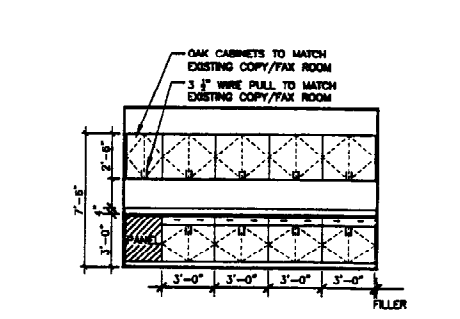
D1 INTERIOR ELEVATION - WAITING ROOM

1/4" = 1'-0" AE101



A1 INTERIOR ELEVATIONS - CASEWORK

1/4" = 1'-0" AE101



A4 INTERIOR ELEVATIONS - COPY/FAX

1/4" = 1'-0" AE101

GENERAL NOTES:

- ALL DOORS ARE 3'-0" X 7'-0" (I.O.N.)
- BASE DRAWING BY HKTA
- 100 SQUARE FEET GROSS PER OCCUPANT, TOTAL SQUARE FOOTAGE 13,618

REV.	DESCRIPTION	DATE
0	ISSUED FOR CONSTRUCTION	06-18-02

ISSUED FOR CONSTRUCTION 06-18-02

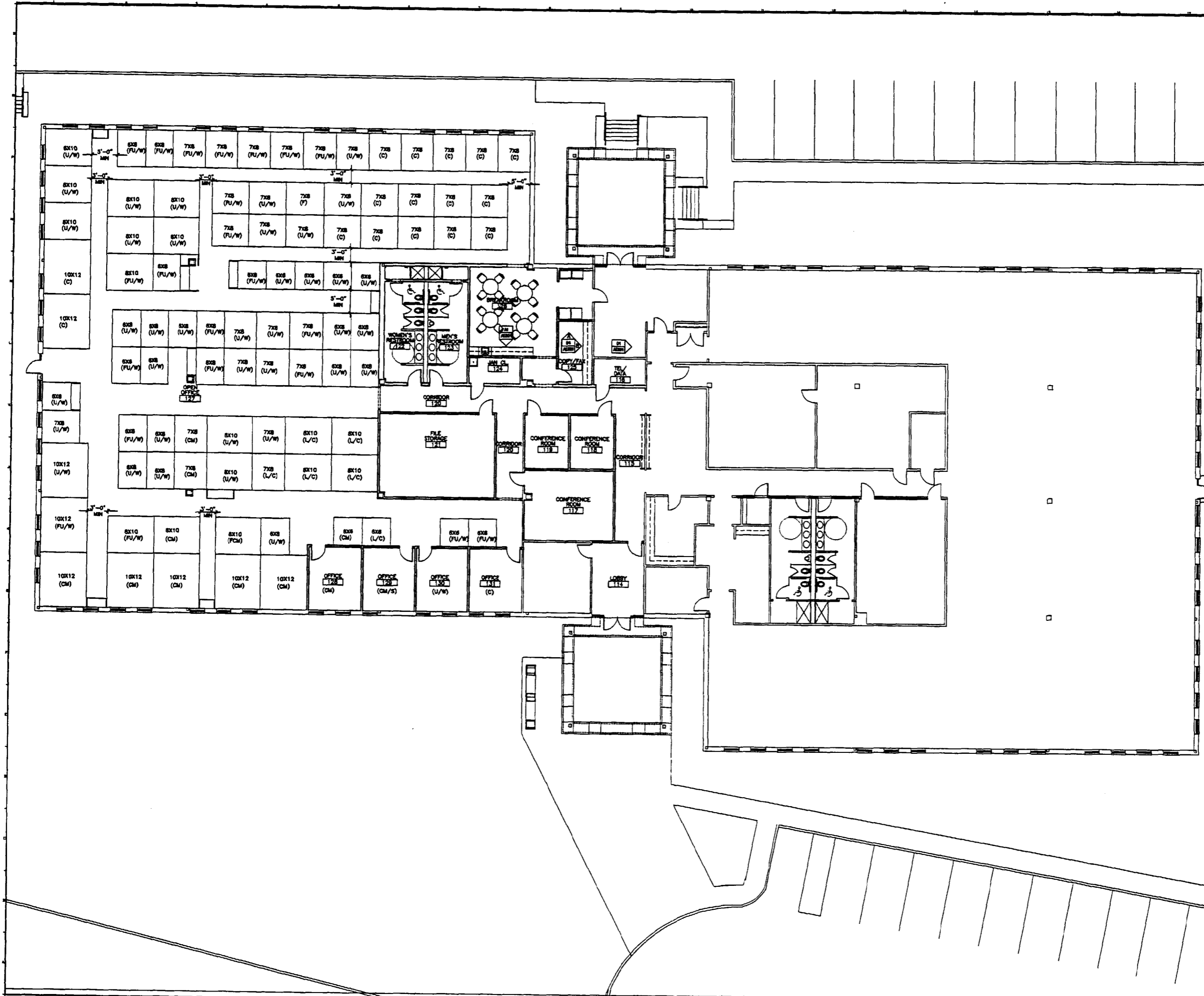


SMRT ARCHITECTURE ENGINEERING PLANNING
 144 Park Street, P.O. Box 618
 Portland, Maine 04104
 TEL: (207) 775-3848
 FAX: (207) 775-4078

DRMS/CORE WASHINGTON AVE FIT-UP, PHASE 2
 PORTLAND, ME
DOOR & ROOM FINISH SCHEDULE, ELEVATIONS,

SHEET TITLE:	SCALE:	DATE:
PROJECT MANAGER:	GRAPHIC SCALE:	
JOB CAP/DRAWN:		
A/E OF RECORD:		
SMRT CAD FILE:		
PROJECT No.		

AE601



- GENERAL NOTES:**
1. ALL DOORS ARE 3'-0" X 7'-0" (U.G.N.)
 2. BASE DRAWING BY HKTA
 3. 100 SQUARE FEET GROSS PER OCCUPANT, TOTAL SQUARE FOOTAGE 13,618

REV.	DESCRIPTION	DATE
0	ISSUED FOR CONSTRUCTION	06-18-02

ISSUED FOR CONSTRUCTION
06-18-02

CURRENT ISSUE STATUS:

SMRT
ARCHITECTURE ENGINEERING PLANNING
164 Park Street, P.O. Box 616
Portland, Maine 04104
Tel. (207) 775-3346
Fax. (207) 775-1070

DRMS/CORE
WASHINGTON AVE. FIT-UP, PHASE 2
PORTLAND, ME

FURNITURE PLAN

SHEET TITLE:	FURNITURE PLAN	
SCALE:	1/8"=1'-0"	DATE: 06-18-02
PROJECT MANAGER:	AMF	GRAPHIC SCALE: 0' 1'
JOB CAP/DRAWN:	LMG	
A/E OF RECORD:	SLB	SHEET No.
SMART CAD FILE:	IF101-02002-02	IF101
PROJECT No.	02002-12	