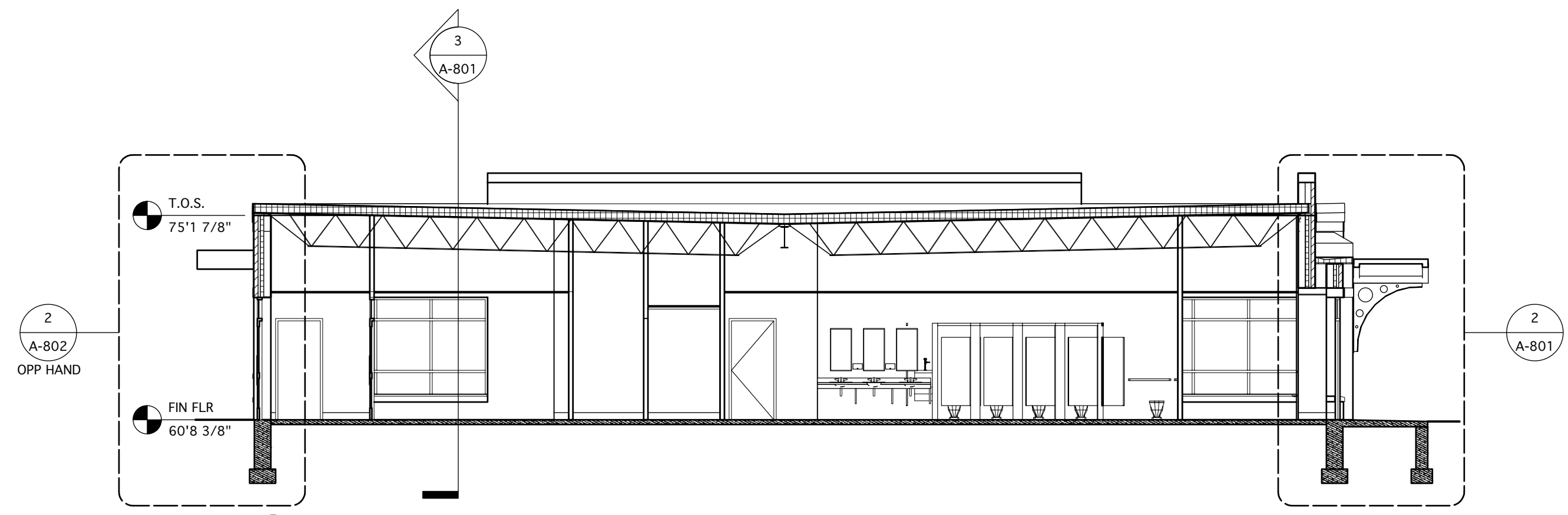


1 SECTION EAST-WEST
A-301 Scale: 1/8" = 1'-0"



2 SECTION NORTH-SOUTH
A-301 Scale: 1/8" = 1'-0"

Design Firm
HKTA / architects, inc.
402 Congress Street Suite 502
Portland, Maine 04101
HKTA / architects
phone: 207.774.6016
fax: 207.774.9128
email: hkt@aol.com

Consultant
Pinkham & Greer
380 U.S. Route 1
Falmouth, Maine 04105



Project Title
NEW OFFICE BUILDING
J.B. BROWN & SONS
901 Washington Avenue
Portland, Maine

Mark	Date	Description

Issue/Revision	
Project ID	2010020
CAD File Name	
Drawn By	
Checked By	
Issue Date:	5-17-11
Plot Date:	
Reviewed by	
Designed by	reh
Submitted By	
Drawing Code	

Sheet Title
Building Sections

Drawing No.
A-301
7 of 21