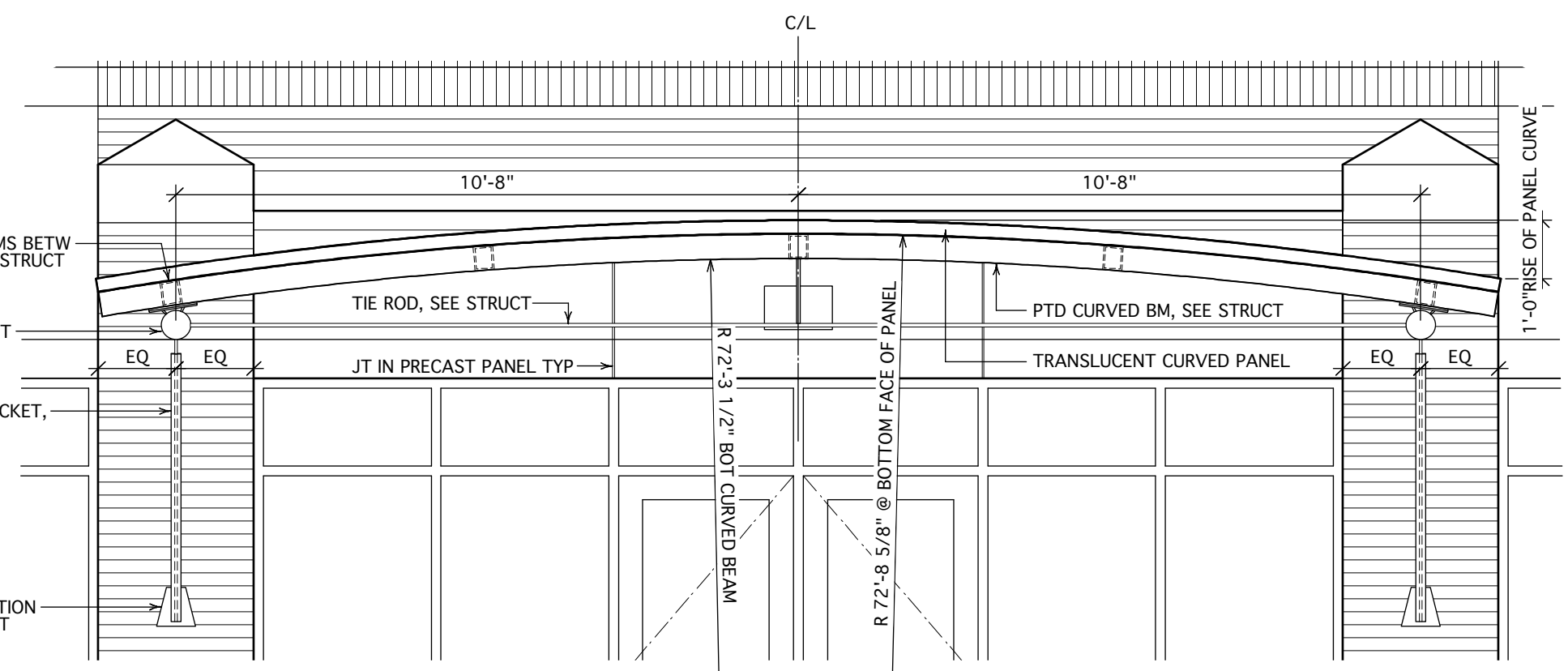
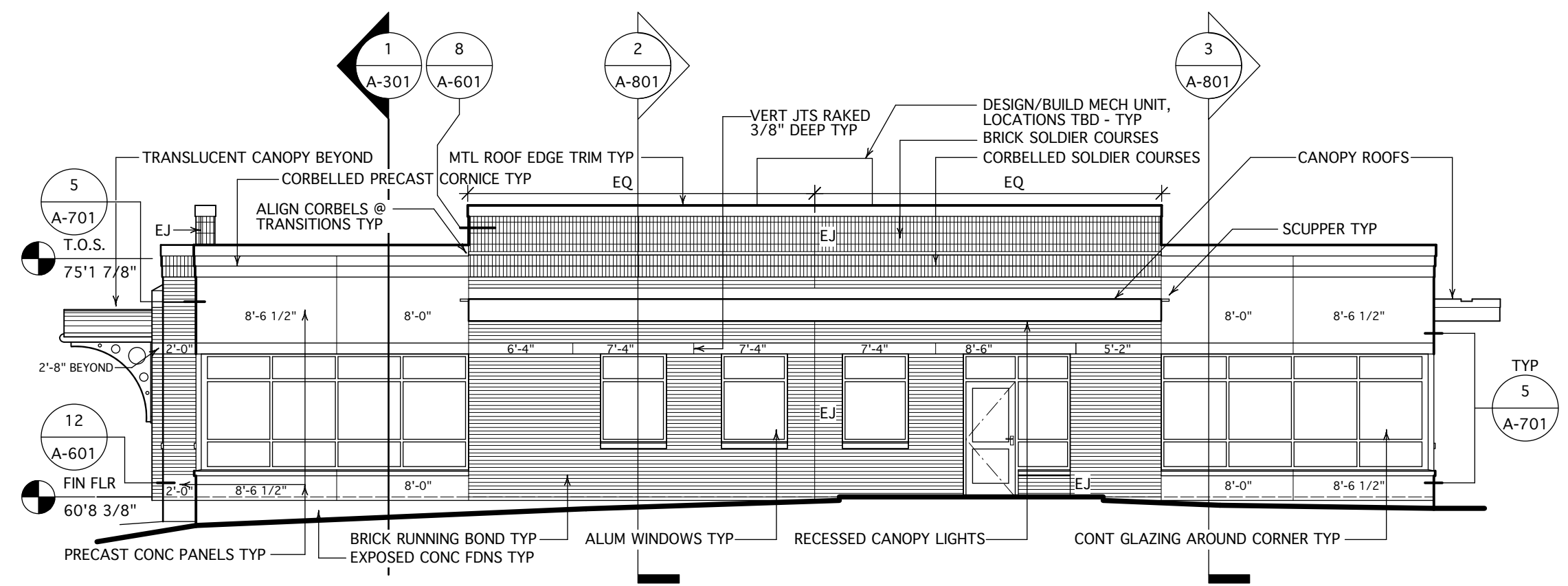


1 SOUTH ELEVATION
Scale: 1/8" = 1'-0"

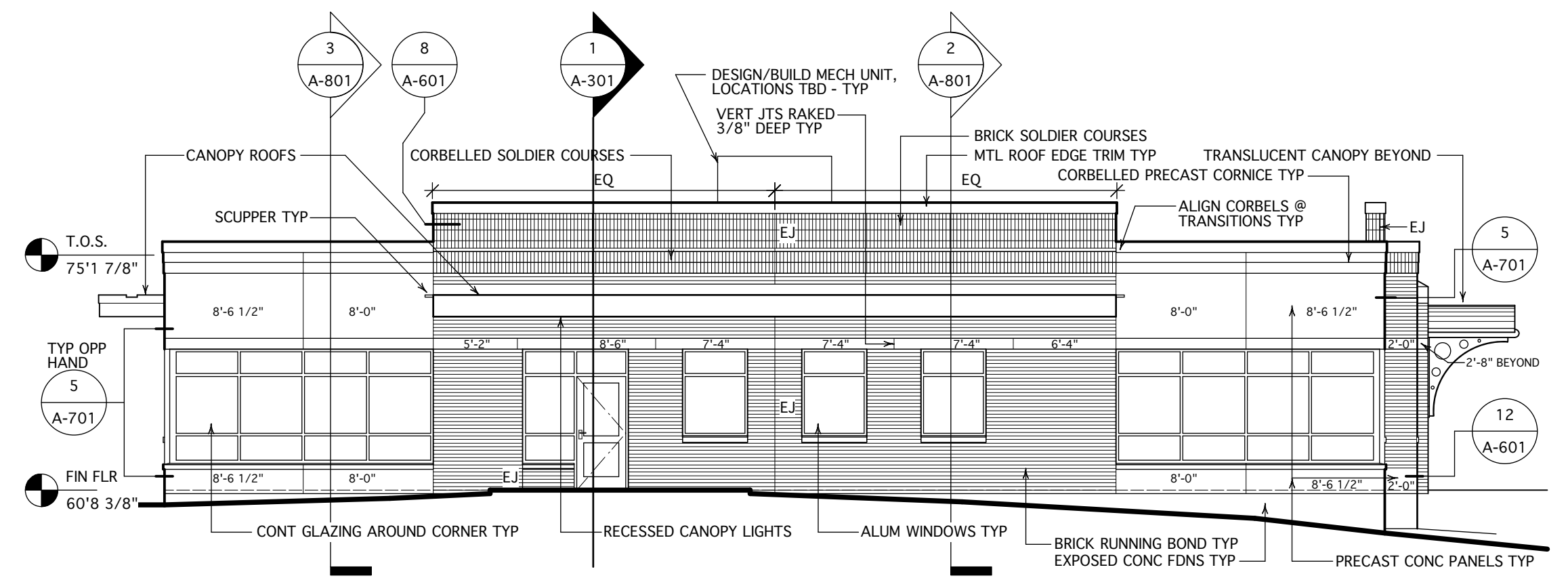


5 DTL @ CURVED ENTRY CANOPY
Scale: 3/8" = 1'-0"

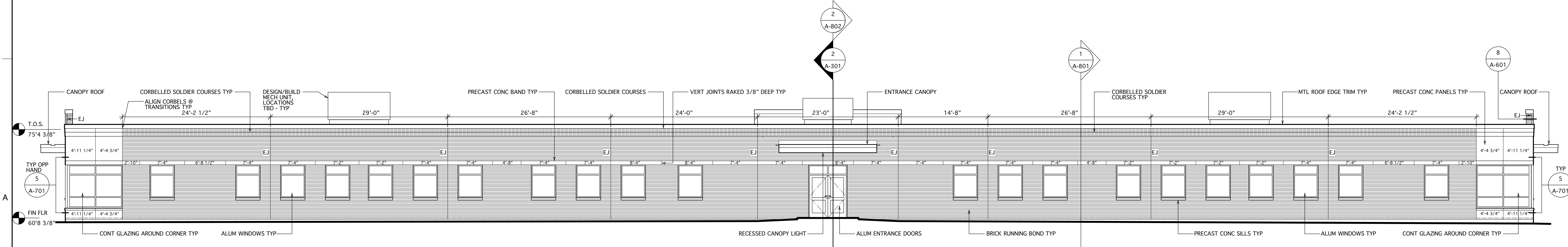
- ELEVATION NOTES:**
1. FILL ALL EXPANSION JOINTS (EJ) WHERE SHOWN W/ SPECIFIED BACKER ROD & SEALANT. JOINTS ARE 3/8" WIDE TYP.
 2. FIELD VERIFY ALL PRECAST PANEL DIMENSIONS.
 3. DIMENSIONS INDICATED ON PRECAST PANELS SIGNIFY NOMINAL LENGTHS IN FT & INCHES.
 4. AT BLDG END CORNERS, MITER ALL PRECAST PANEL CORNERS. FINISH W/ BACKER & SEALANT PER DTL 5/A-701. SEE DTL 12/A-601 FOR NON-MITERED CORNERS AS SHOWN ON THIS SHEET.
 5. FABRICATE PRECAST PANELS TO HAVE STANDARD 3/8" WIDE END SEALANT JOINTS. THE PRECAST BAND ABOVE TOPS OF WINDOWS SHALL HAVE VERTICAL JOINTS RAKED 3/8" DEEP TYP.
 6. PROVIDE 3/8"x3/8" VERTICAL BONDOUTS IN LARGE PRECAST PANELS ABOVE STOREFRONT WINDOWS AS SHOWN ON THESE ELEVATIONS. ALIGN W/ CENTER OF MILLIONS BELOW. ALTERNATIVELY, PROVIDE TWO HALF PANELS SEPARATED BY A RAKED 3/8" DEEP SEALANT JOINT.
 7. TRANSITIONS FROM BRICK VENEER TO PRECAST CONCRETE PANELS SHALL BE TREATED AS EXPANSION JOINTS. FILL W/ SPECIFIED BACKER AND SEALANT TYP.
 8. SEE WINDOW SCHEDULE FOR WINDOWS AND STOREFRONT TO RECEIVE HI-PERFORMANCE INSULATING GLASS.



2 EAST ELEVATION
Scale: 1/8" = 1'-0"



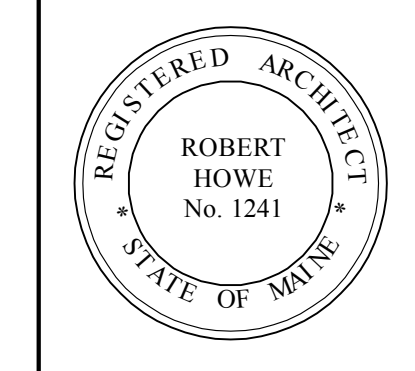
3 WEST ELEVATION
Scale: 1/8" = 1'-0"



4 NORTH ELEVATION
Scale: 1/8" = 1'-0"

Design Firm
HKTA / architects, inc.
402 Congress Street, Suite 502
Portland, Maine 04101
phone: 207. 774. 6016
fax: 207. 774. 9128
email: hta@aol.com

Consultant
Pinkham & Greer
380 U.S. Route 1
Falmouth, Maine 04105



Project Title
NEW OFFICE BUILDING
J.B. BROWN & SONS
901 Washington Avenue
Portland, Maine

Mark	Date	Description

Issue/Revision	Date
Project ID 2010020	
CAD File Name	
Drawn By	
Checked By	
Issue Date	5-17-11
Plot Date	
Reviewed by	
Designed by	reh
Submitted By	
Drawing Code	

Sheet Title
Building Elevations

Drawing No.
A-201
6 of 21