

4 3/8"=1'-0" PROPOSED BATHROOM PLAN

3 3/8"=1'-0" INTERIOR ELEVATIONS

6 NTS KEY PLAN

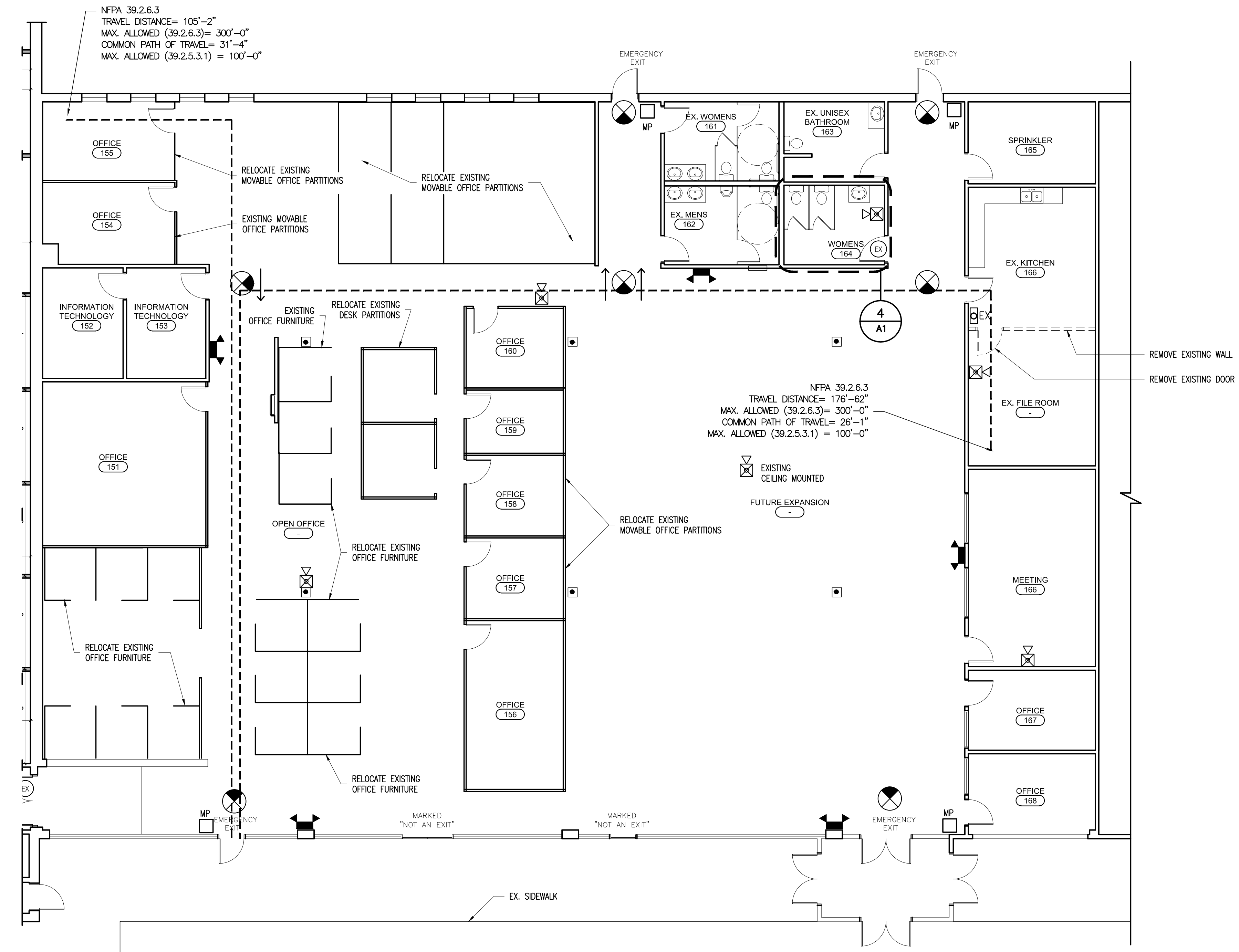
LIFE SAFETY SYSTEM LEGEND	
	DIRECTIONAL EXIT LIGHT
	AUTOMATIC EMERGENCY LIGHT
	FIRE EXTINGUISHER - RECESSED CABINET
	STROBE DEVICE, MAX 96" ABOVE FLOOR
	HORN AND STROBE DEVICE, MAX 96" ABOVE FLOOR
	MANUAL PULL STATION

NOTE:
 COORDINATE THE REMOVAL AND RELOCATION OF EXISTING LIFE SAFETY EQUIPMENT. G.C. TO SUPPLY ADDITIONAL EQUIPMENT AS REQUIRED TO COMPLETE THE SCOPE OF THE DESIGN.

5 NTS SCHEDULE

PROJECT DATA			
USE			
OCUPANCY CLASSIFICATION	BUSINESS (B)		
MIXED USE OCCUPANCY, IBC SEC. 508			
GROSS S.F. AREA OF RENOVATION	GROSS S.F.	11,204 S.F.	
OCCUPANCY CALCULATION			
GROSS S.F. AREA OF RENOVATION	11,204 S.F.	11,204/100	112.04
CALCULATED OCCUPANT LOAD: 112.04			
EXITS AND EXIT ACCESS DOORWAYS			
EXITS	REQUIRED	PROVIDED	IBC 2009 1015.1
DOOR WIDTH	32" MINIMUM	72" & 36"	
COMMON PATH OF TRAVEL	100'-0"	See Plan	
EXIT ACCESS TRAVEL DISTANCE (WITH SPRINKLERS)	300'-0" (NFPA)	See Plan	300 FEET PER IBC 2009 TABLE 1016.1, NFPA 39.2.6.3
DEAD END CORRIDORS	50'-0"	NA	
BUILDING ELEMENT - FIRE RESISTANCE RATING			
STRUCTURAL FRAME	REQUIRED	PROVIDED	
INCLUDING COLUMNS, GIRDERS, TRUSSES	2	Existing No Change	
BEARING WALLS			
EXTERIOR	2	Existing No Change	
INTERIOR	2	Existing No Change	
NON BEARING WALLS AND PARTITIONS			
EXTERIOR	0	Existing No Change	
INTERIOR	0	Existing No Change	
FLOOR CONSTRUCTION			
INCLUDING SUPPORTING BEAMS & JOISTS	2	Existing No Change	
ROOF CONSTRUCTION			
INCLUDING SUPPORTING BEAMS & JOISTS	1	Existing No Change	
SEPARATION OF OCCUPANCY			
COMPLIES WITH IBC 2009 SEC. 508.2 ACCESSORY OCCUPANCIES			
BUILDING HEIGHTS AND AREAS			
AREA	REQUIRED	PROVIDED	SF INCLUDES AREA OF PROPOSED RENOVATION
HEIGHTS	UL	11,204 S.F.	
STORIES	11 STORIES	1.0 STORIES	
EGRESS WIDTH:			
OCCUPANTS x (0.2 - OTHER EGRESS COMPONENTS)	22.4"	72" & 36"	
112.02 x 0.2 = 22.4" WIDTH REQUIRED			
PLUMBING FIXTURES			
REQUIRED	PROVIDED		
WATER CLOSETS - MEN/WOMEN	3	3	
LAVATORIES - MEN/WOMEN	1	2	
UTILITY SINK	1	1	
SPRINKLER			
EXISTING MONITORED SYSTEM	Existing No Change	Existing No Change	

1 1/8"=1'-0" PROPOSED PLAN



2 NTS CODE DATA

DO NOT SCALE DRAWINGS

GENERAL CONTRACTOR

STRUCTURAL ENGINEER

MEP ENGINEER

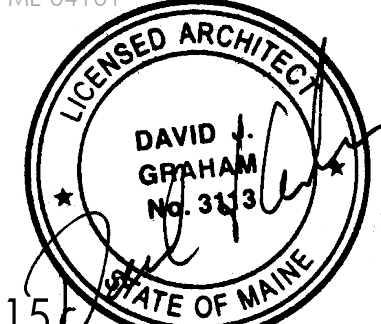
CLIENT

Spurwink Services
 899 Riverside Street
 Portland, ME 04103

PROJECT

Spurwink Services

901 Washington Ave.
 Portland, ME 04101



2.27.15

ISSUED FOR PERMIT

INFORMATION

Path: M:/boulos/spurwink

Issue Date: 02.27.15

Drawn By: djg

Checked By: djg

Revision:

- 1.
- 2.
- 3.
- 4.

TITLE

PROPOSED OFFICE LAYOUT PLAN

SCALE

1/8"=1'-0"

© 2014 Graham Architects. All rights reserved. Information, material, and designs in this document are proprietary to and owned by Graham Architects, and may not be disclosed to any third party, reproduced, posted on a global computer information network, or distributed in any way without the written consent from Graham Architects.

A-1